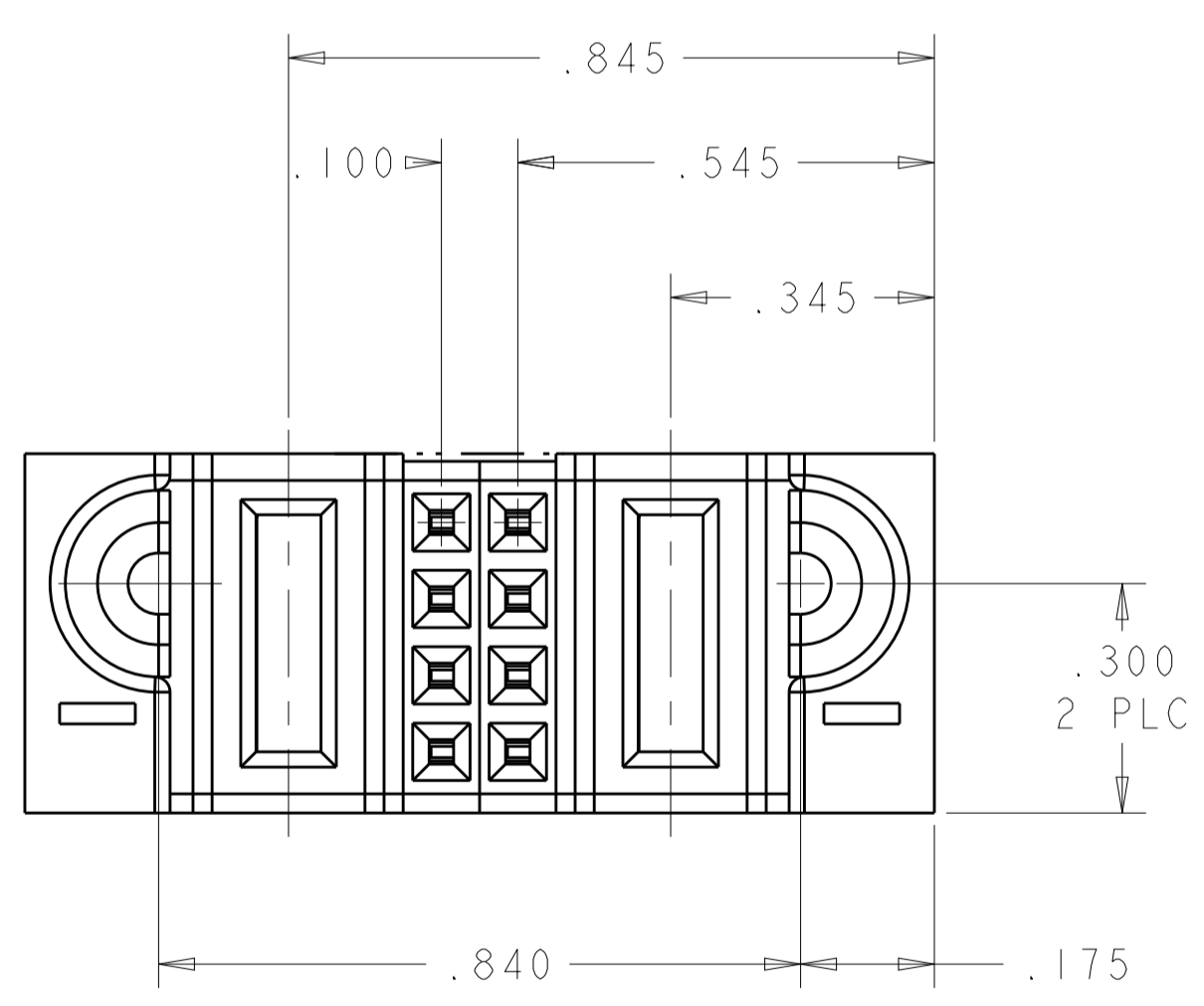
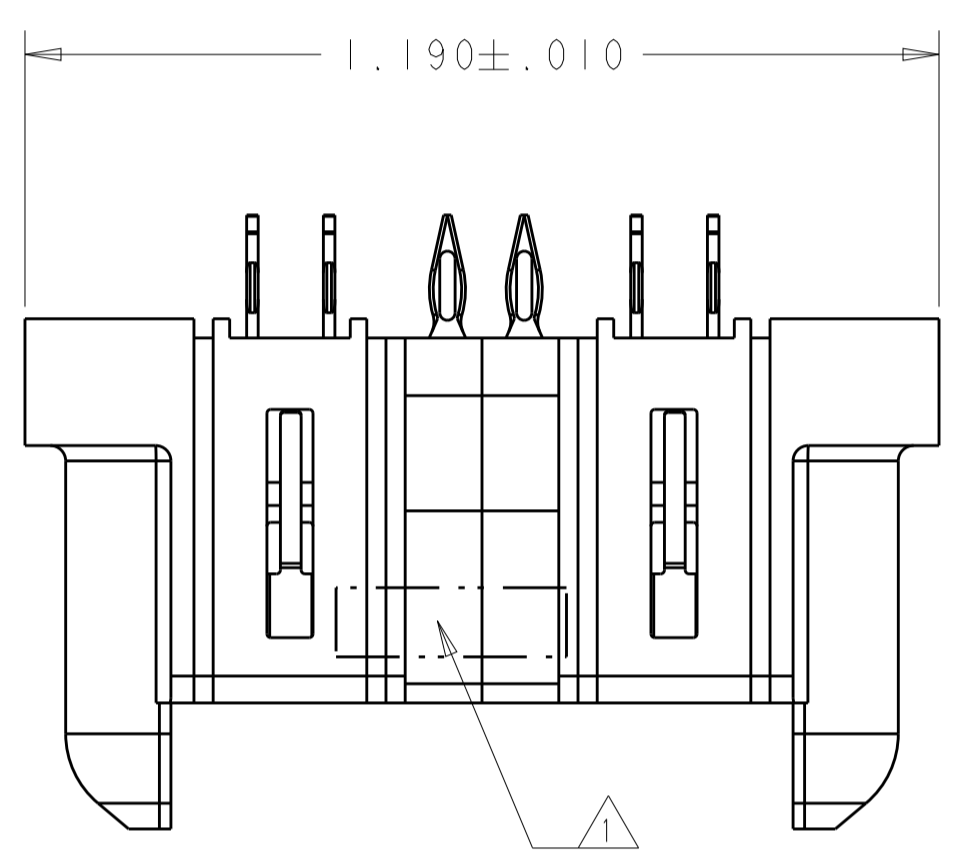
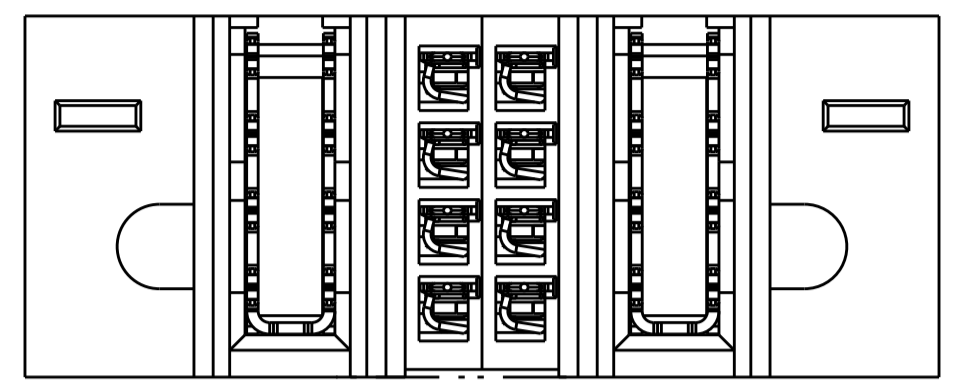
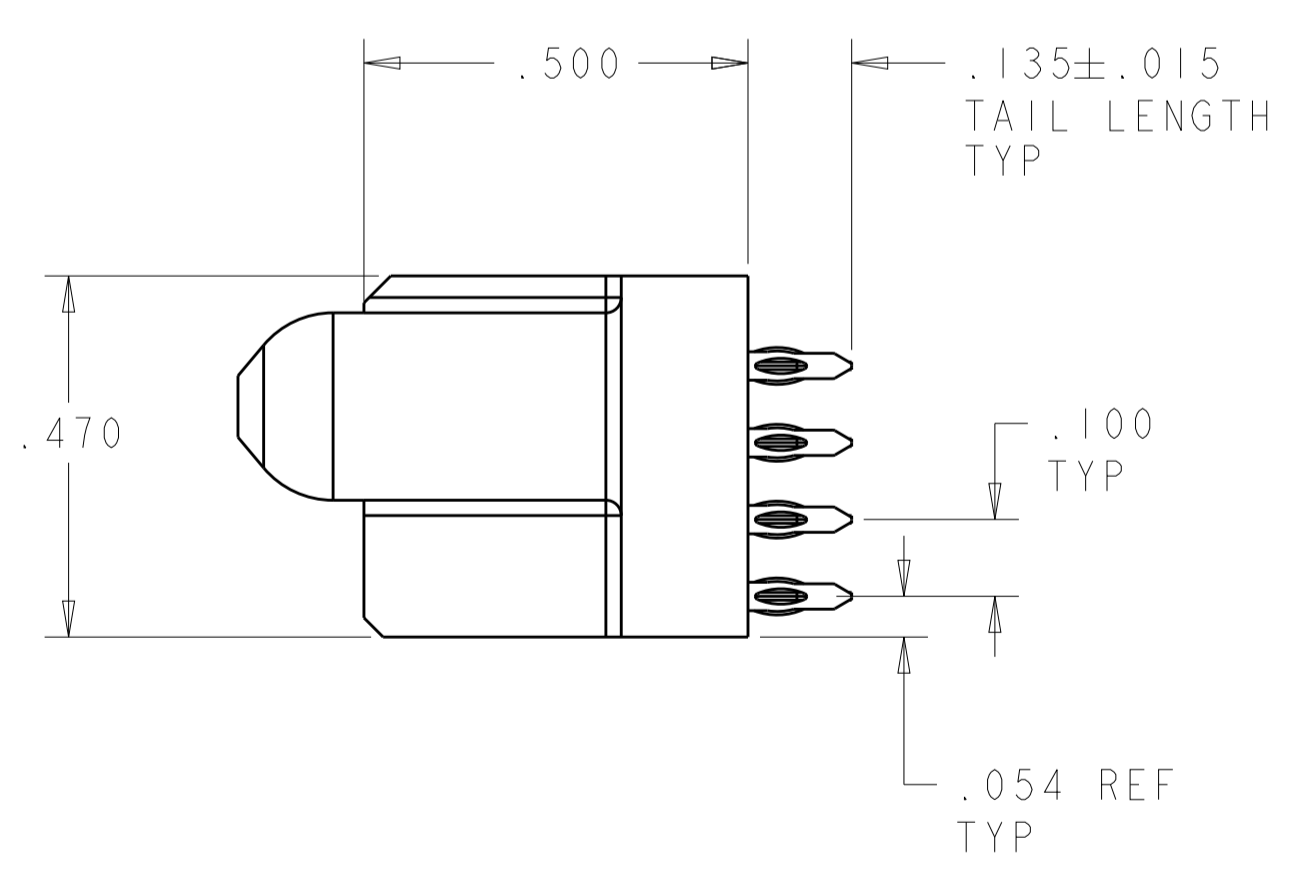


REVISIONS				
P	LTN	DESCRIPTION	DATE	OWN APVD
1		PROPOSAL DESIGN	10JAN2014	CZ SZ
2		REVISED	11FEB2014	CZ SZ



- 1 "AMP", PART NUMBER AND DATE CODE TO BE MARKED IN AREA SHOWN  
PARTS UNDER 2.00 LONG MAY BE MARKED ON BOTH SIDES
- 2 MATERIAL:  
HOUSING - GLASS FILLED HIGH TEMP THERMO PLASTIC, BLACK, UL94 V-0  
SIGNAL CONTACT - HIGH CONDUCTIVITY COPPER ALLOY  
POWER CONTACT - HIGH CONDUCTIVITY COPPER ALLOY
- 3 CONTACT PLATING:  
SIGNAL CONTACTS - .000050 MIN Ni UNDER ALL  
.000003 MIN Au OVER .000027 MIN Pd/Ni ON CONTACT AREA  
.000100 MIN MATTE Sn AT PCB INTERFACE  
POWER CONTACTS - .000050 MIN Ni UNDER ALL  
.000003 MIN Au OVER .000027 MIN Pd/Ni ON CONTACT AREA  
.000100 MIN MATTE Sn AT PCB INTERFACE
- 4 MECHANICAL CONNECTOR KEEP OUT ZONE
- 5 DATUM AND BASIC DIMENSIONS ESTABLISHED BY CUSTOMER
- 6 PCB - ALL HOLE DIAMETERS ARE FINISHED HOLE SIZES
- 7 PCB - 0.0453 ± .0010 DRILLED HOLES PLATED WITH .0003 MIN Sn  
OVER .001 TO .003 Cu PLATING TO ACHIEVE A .040 ± .003 HOLE

PROPOSAL ONLY

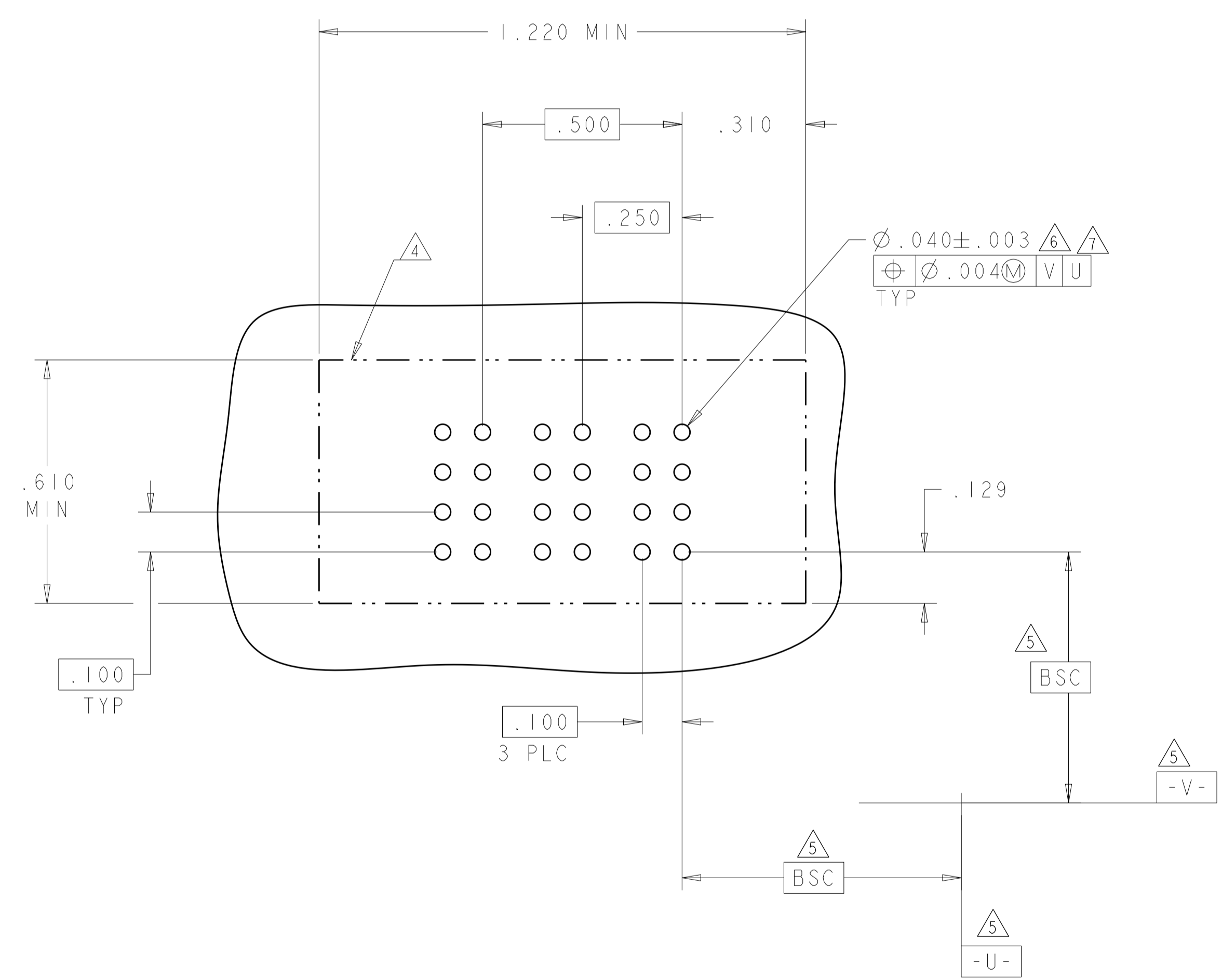


IP + 8S + IP	5-6450860-6
DESCRIPTION	PART NUMBER

THIS DRAWING IS A CONTROLLED DOCUMENT.		DWN C. ZHOU	10JAN2014		
DIMENSIONS: INCHES		CHK S. ZHAO	APVD	NAME	
TOLERANCES UNLESS OTHERWISE SPECIFIED:		PRODUCT SPEC		VER RECEP ASSEMBLY	
0 PLC ±		108-2292		SHORT GUIDES, PRESS FIT	
1 PLC ±.01		APPLICATION SPEC		MULTI-BEAM XLE	
2 PLC ±.005		114-13251		SIZE	CAGE CODE DRAWING NO
3 PLC ±.0020		WEIGHT		A1	-
4 PLC ±.0020		CUSTOMER DRAWING		5-6450860-6	
ANGLES ±.7°		SCALE		N/A	
FINISH		SHEET		1 OF 2	
MATERIAL		REV		1	

REVISIONS				
P.	LTN	DESCRIPTION	DATE	APVD
-	-	SEE SHEET 1	-	-

PART NUMBER	ROWS		POWER	SIGNAL	POWER	
			P2	2	1	
5-6450860-6	D C B A		GS	AP	AP	GP
				AP	AP	
				AP	AP	
				AP	AP	
IP + 8S + IP						



GP	MFBL POWER PRESS FIT CONTACT .135 TAIL LENGTH
GS	STD POWER PRESS FIT CONTACT .135 TAIL LENGTH
AP	SIGNAL PRESS FIT CONTACT .135 TAIL LENGTH
CODE	TAIL LENGTH
CONTACT TABLE	

THIS DRAWING IS A CONTROLLED DOCUMENT.		DWN C. ZHOU CHK S. ZHAO APVD	10JAN2014	<b>STE</b> TE Connectivity	
DIMENSIONS: INCHES		TOLERANCES UNLESS OTHERWISE SPECIFIED:			
		0 PLC ±	PRODUCT SPEC	VER RECEP ASSEMBLY SHORT GUIDES, PRESS FIT MULTI-BEAM XLE	
MATERIAL		1 PLC ±.01	108-2292		
		2 PLC ±.01	APPLICATION SPEC	SIZE CAGE CODE DRAWING NO RESTRICTED TO	
		3 PLC ±.005	114-13251		
		4 PLC ±.0020	WEIGHT	A1 - C=5-6450860-6 CS1	
		ANGLES ±.2°	CUSTOMER DRAWING		
		FINISH	SCALE N/A	SHEET 2 OF 2 REV 1	