



Electrical specifications

Center Frequency: 930 MHz
1 dB Bandwidth: 20 MHz min
Ripple in Passband: 0.2 dB max
Insertion loss: 1.6 dB max
Return loss: 15 dB min
Rejection 1: 35 dB@895 MHz
Rejection 2: 35 dB@965 MHz
Rejection@>1000MHz: 70 dB min.
Second Harmonic 1800 MHz: >70 dB

Power Handling: 400 Watts

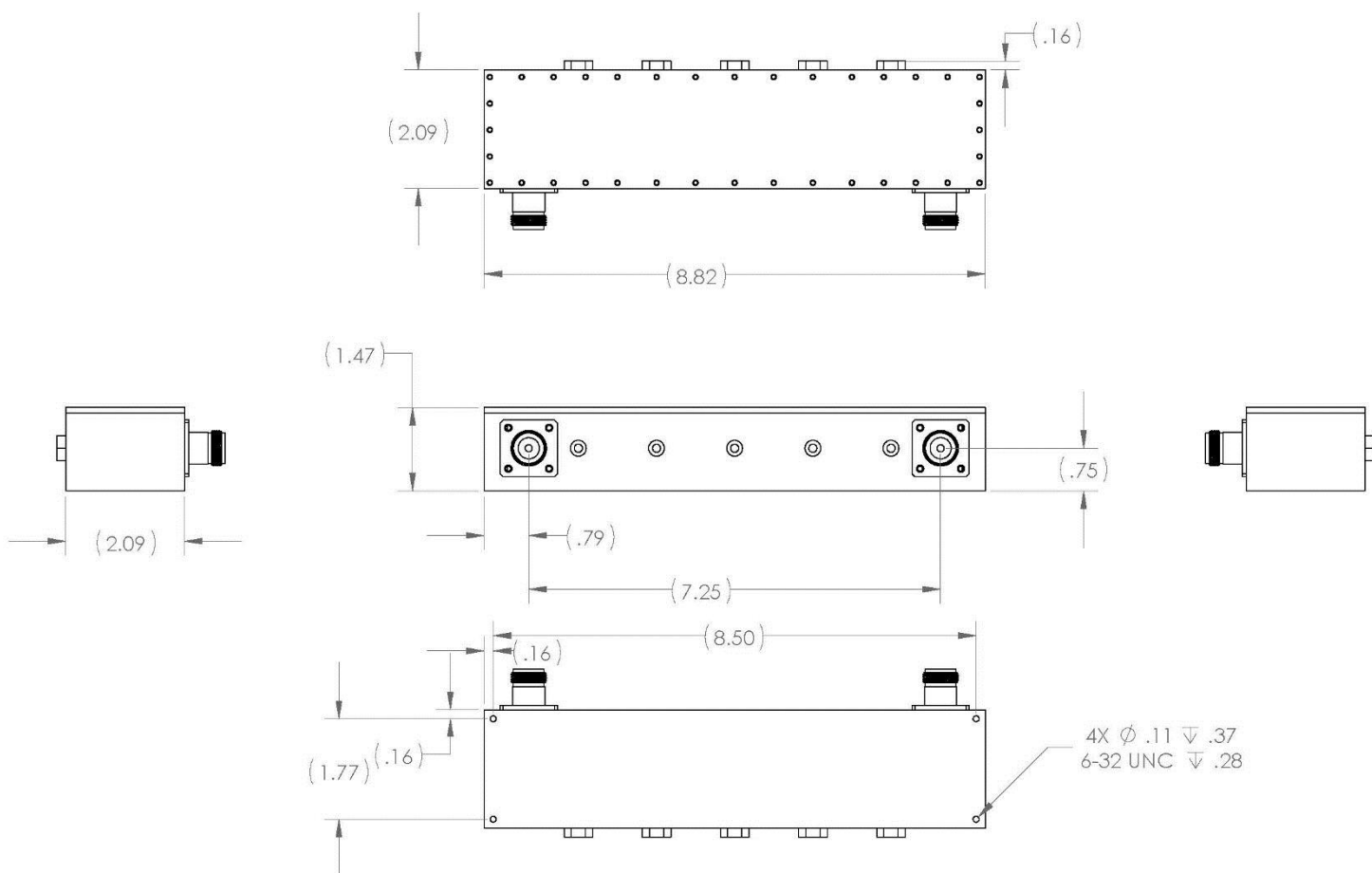
Mechanical

Mounting Method: Threaded Mounting Holes
Connector Type: N (F)
Dimensions: 8.82" X 2.25" X 1.47"

Environmental

Operating Temperature: -45 to +85° C
Storage Temperature: -55 to +95° C
Shock: 20 G. 11 ms
Vibration: 20 G. 5 to 200 MHz

Outline Drawing:





Simulated Response Plot

