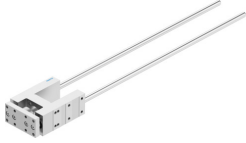


Guide unit FENG-32-500-KF

Part number: 34498

FESTO



 General operating condition

Data sheet

| Feature | Value |
|-------------------------------------|--|
| Size | 32 |
| Stroke | 500 mm |
| Mounting position | Any |
| Guide | Recirculating ball bearing guide |
| Structural design | Guide |
| Explosion prevention and protection | Zone 1 (ATEX) Zone 2 (ATEX) Zone 21 (ATEX) Zone 22 (ATEX) |
| LABS (PWIS) conformity | VDMA24364-B2-L |
| Ambient temperature | -20 °C ... 80 °C |
| Max. force Fy | 750 N |
| Max. force Fy static | 1020 N |
| Max. force Fz | 750 N |
| Max. force Fz static | 1020 N |
| Max. torque Mx | 28 Nm |
| Max. static moment Mx | 38 Nm |
| Max. torque My | 34 Nm |
| Max. static moment My | 46 Nm |
| Max. torque Mz | 34 Nm |
| Max. static moment Mz | 46 Nm |
| Displacement force | 15 N |
| Product weight | 2430 g |
| Type of mounting | With internal thread |
| Note on materials | RoHS-compliant |
| Material of guide component | Tempered steel |
| Housing material | Wrought aluminum alloy, anodized |
| Material of yoke plate | Wrought aluminum alloy, anodized |