

No. of Ways	*Male Jack Screw	Female Jack Screw	A	B	C	D	E ±0.1	F	G
09	MD 09T	MD 09TF	31.4	-	14.5	24.0	25.0	32.0	7.9
15	MD 15T	MD 15TF	42.0	28.5	14.3	30.0	33.3	38.0	10.0
25	MD 25T	MD 25TF	55.5	41.9	25.1	36.0	47.0	44.0	14.2
37	MD 37T	MD 37TF	69.8	57.5	39.2	38.0	63.5	46.0	18.0

* Add suffix '3' for male jack screw with M3 threads e.g. MD 09T3.

Characteristics:

- * Male/Female Jack Screw having 4-40 UNC threads.
- * External cable clamp, top cable entry.

Material:

Hood: ABS (metallised).
Screws: Steel, Zinc plated.

1	19.03.05		
ISS.	DATE	MODIFICATION	SIGN.

TOLERANCES
UNLESS
OTHERWISE
SPECIFIED
±0.1

**METALLISED PLASTIC TOP
CABLE ENTRY HOOD**

SCALE ~

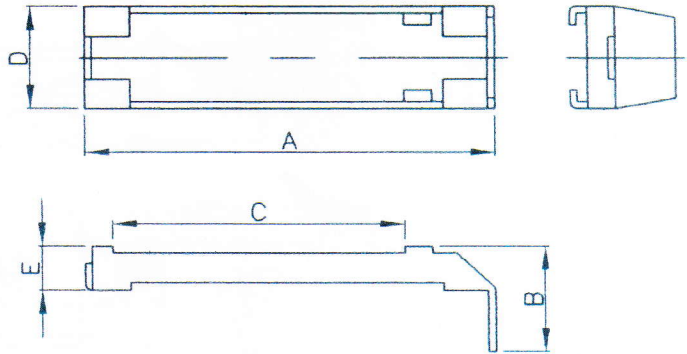


DIMENSIONS IN MM		
	DATE	SIGN.
DESIGN	19.03.05	
DRAWN	19.03.05	
CHKD.		
APPD.		
DRG. NO. DHDCU-004. A4.		
SHEET 1 OF 1		

SLIDE LOCK

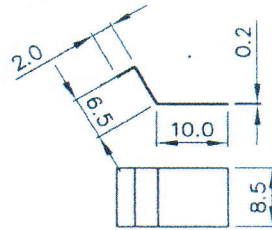
Material : Steel
Finish : Nickel plating

No. of Ways	Ordering code	A	B	C	D	E
09	S 09	37.6	15.3	21.0	14.4	6.5
15	S 15	44.1	15.5	30.3	14.4	6.5
25	S 25	59.5	15.5	43.0	14.8	6.6
37	S 37	75.5	15.5	59.5	14.8	6.6
50	S 50	73.5	15.5	57.1	17.8	6.6



SPRING

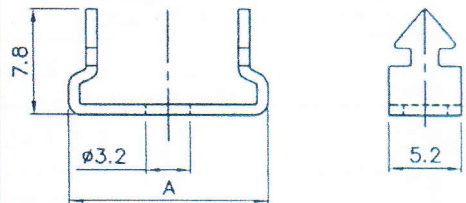
Material : STAINLESS Steel
Ordering code : SP9/50



UNDER FLANGE MOUNTING

Material : Steel
Finish : Nickel plating

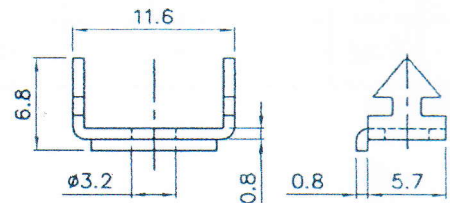
No. of Ways	Ordering code	A
09	LUF 9/37	14.3
15	LUF 9/37	14.3
25	LUF 9/37	14.3
37	LUF 9/37	14.3
50	LUF 50	17.2



OVER FLANGE MOUNTING

Material : Steel
Finish : Nickel plating

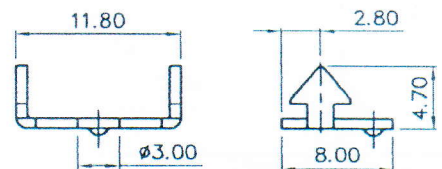
Ordering code : LOF 9/37



REAR MOUNT OVER FLANGE

Material : Steel
Finish : Nickel plating

Ordering code : ROF 9/37



Computer4\productscan\ELECTRONICS\DHDCU

TOLERANCES
UNLESS
OTHERWISE
SPECIFIED

±0.1

SCALE ~



ACCESSORIES FOR HOOD WITH SLIDE LOCK

DIMENSIONS IN MM

	DATE	SIGN.
DESIGN	08.04.10	
DRAWN	08.04.10	
CHKD.		
APPD.		

DRG. NO.
DHDCU-020. A4.

SHEET 1 OF 1