

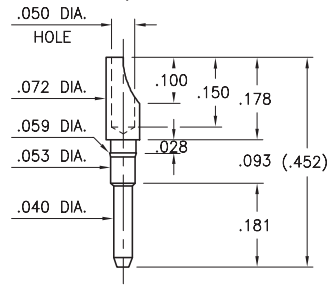
MALE PCB PINS

PRINTED CIRCUIT PINS

1140

1140-0-01-XX-00-00-03-0

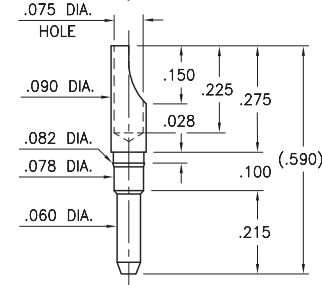
Press-fit in .057 mounting hole
For wire sizes up to 20 AWG



1160

1160-0-01-XX-00-00-03-0

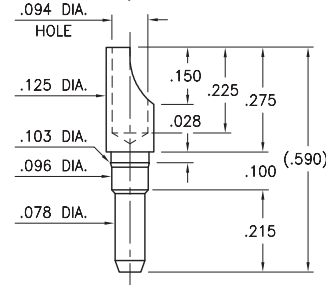
Press-fit in .080 mounting hole
For wire sizes up to 16 AWG



1178

1178-0-01-XX-00-00-03-0

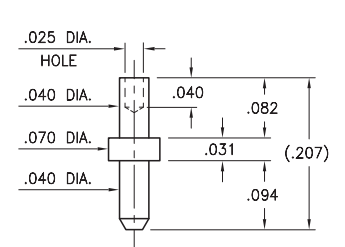
Press-fit in .100 mounting hole
For wire sizes up to 14 AWG



4658

4658-0-00-XX-00-00-08-0

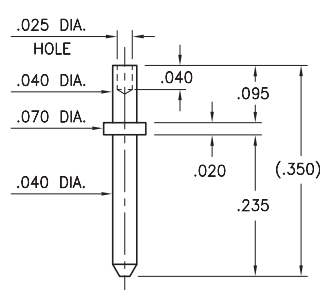
Swage mount .043 mounting hole



4275

4275-0-00-XX-00-00-08-0

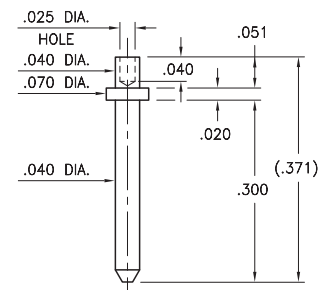
Swage mount .043 mounting hole



9103

9103-0-00-XX-00-00-08-0

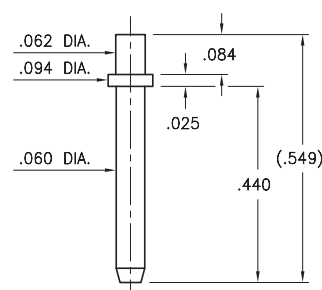
Swage mount .043 mounting hole



4357

4357-0-00-XX-00-00-03-0

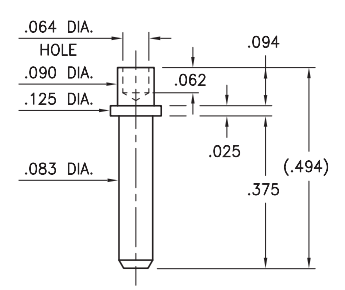
Solder mount .064 mounting hole



9242

9242-0-00-XX-00-00-08-0

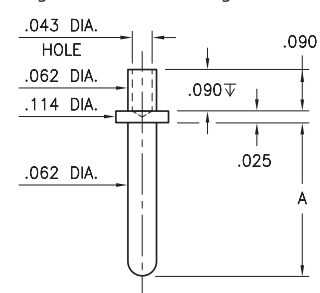
Swage mount .094 mounting hole



4639/4717

4XXX-0-00-XX-00-00-08-0

Swage mount .065 mounting hole

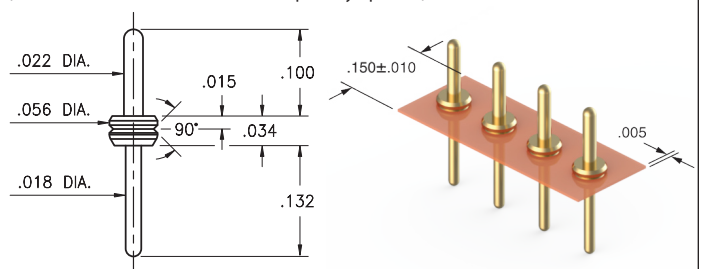


Basic Part Number	Pin Length A
4639-0	.432
4717-0	.332

3169

3169-0-61-15-00-00-03-0

Pins are mounted on a removable Kapton tape carrier at .100" pitch.
Packaged on continuous strip spools of 1,000 pins.
(Contact distributors for other order quantity options.)



SPECIFICATIONS:

Pin Material: Brass Alloy 360, 1/2 Hard
(Except where noted)

Dimensions: Inches

Tolerances On: Lengths: ±.005
Diameters: ±.002
Angles: ±2°



ORDER CODE: XXXX - 0 - 00 - XX - 00 - 00 - 0X - 0

BASIC PART # →

SPECIFY PIN FINISH:

- 01 200 μ" TIN/LEAD OVER NICKEL
- ◆ 80 200 μ" TIN OVER NICKEL (RoHS)
- ◆ 15 10 μ" GOLD OVER NICKEL (RoHS)
- ◆ 21 20 μ" GOLD OVER NICKEL (RoHS)
- ◆ 34 50 μ" GOLD OVER NICKEL (RoHS)



Mouser Electronics

Authorized Distributor

Click to View Pricing, Inventory, Delivery & Lifecycle Information:

Mill-Max:

[1140-0-01-80-00-00-03-0](#) [9103-0-00-80-00-00-08-0](#) [4658-0-00-80-00-00-08-0](#) [4717-0-00-80-00-00-08-0](#) [4275-0-00-80-00-00-08-0](#) [4639-0-00-80-00-00-08-0](#) [9242-0-00-80-00-00-08-0](#) [4717-0-00-15-00-00-08-0](#) [9242-0-00-15-00-00-08-0](#)
[1178-0-01-01-00-00-03-0](#) [1178-0-01-15-00-00-03-0](#)