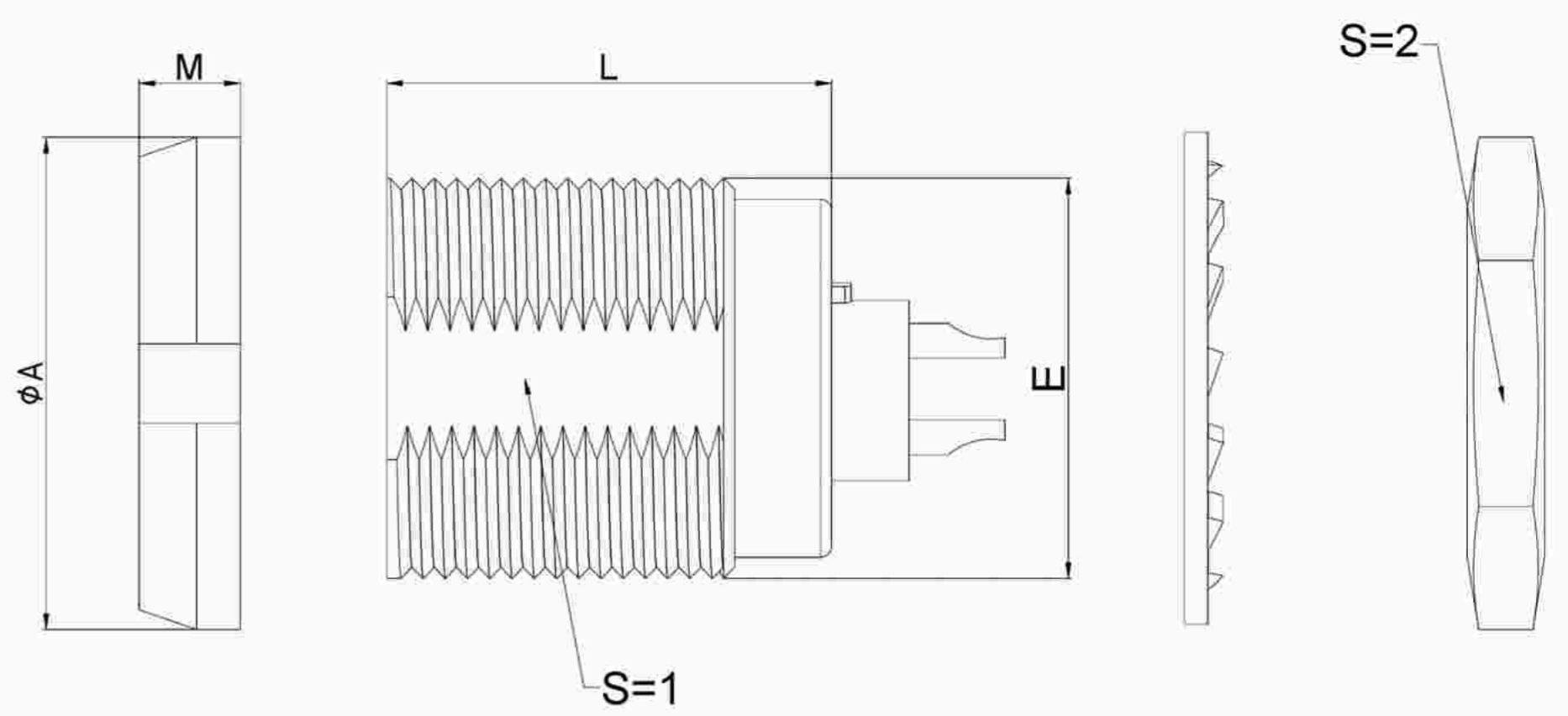


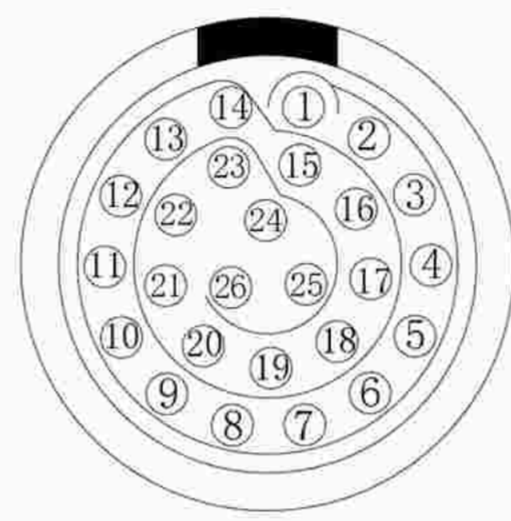
# 1.View and size(视图及尺寸)

| Main technical indicators(主要技术指标) |   |
|-----------------------------------|---|
| 1.Mating (插拔次数)                   | 5000  |
| 2.Working Temperature (温度)        | -55~+150 °C   |
| 3.IP Rating (防护级别)                | IP 50   |
| 4.Diameter of socket end(插合端直径)   | φ0.5  |
| 5.Testing Voltage (测试电压)          | 950V  |
| 6.Working Voltage (工作电压)          | 1300V   |
| 7.Rated Current (额定电流)            | 2.0A  |
| 8.Shell material(壳体材质)            | Brass (chromium plating)/(nickel plating) fixation ring/ 黄铜 (镀铬)/(镀镍) 固定圈 |
| 9.Pin Material(插针材料)              | Copper alloy gold plating(铜合金镀金)  |
| 10.Insulator material(绝缘体材质)      | L:PPS P:PEEK  |

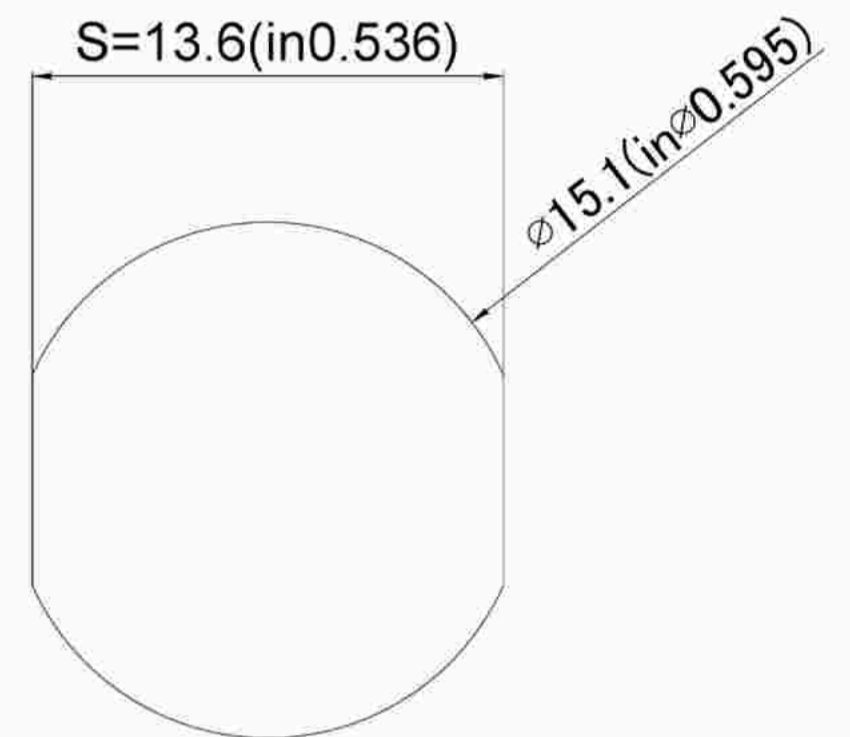


|    | A    | L    | E     | M    | S1   | S2   |
|----|------|------|-------|------|------|------|
| MM | φ20  | 18.5 | M15*1 | 3.5  | 13.5 | 17   |
| in | 0.79 | 0.73 |       | 0.14 | 0.53 | 0.67 |

| Sum up(总结)                  |   |
|-----------------------------|---|
| Series(系列)                  | B   |
| Shell style/model (外壳样式/型号) | ZCG:With two nuts (fixed back and forth)带有两个螺母 (前后固定) |
| Button (按键)                 | A button(一个按键)  |
| Termination type (终止类型)     | Mother solder tin(母焊锡)                                |
| Line diameter awg(线材直径)     | 34-28AWG  |
| Cable diameterφ (电缆直径)      | 0-0   |
| Match plug(匹配插头)            | TGG.2B.P26.CXAD52H                                    |

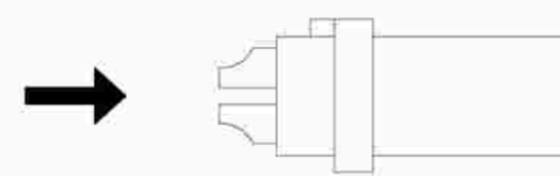


Welded surface (焊接面)

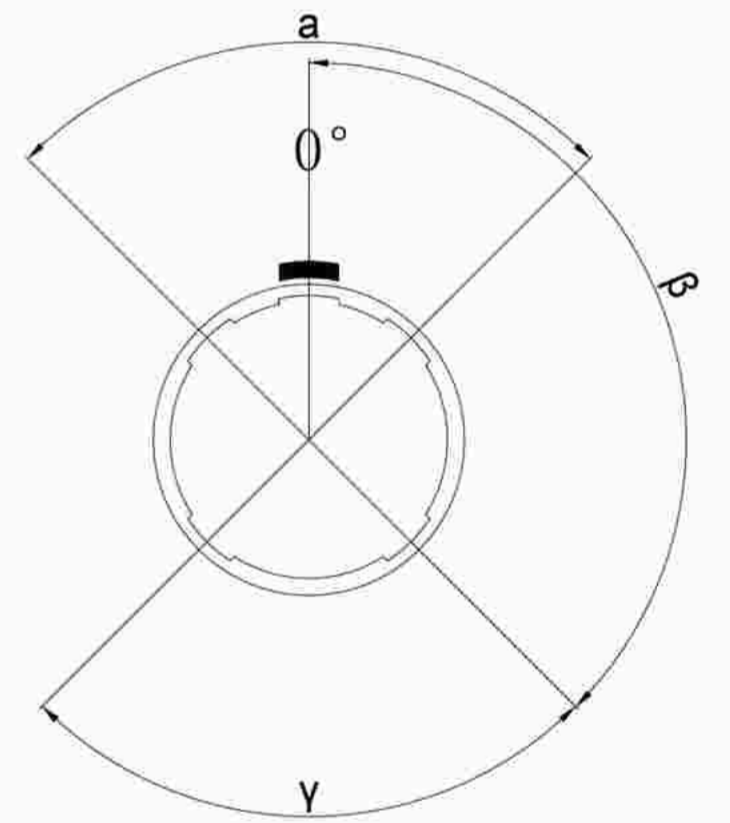


Pane hole size (面板开孔尺寸)

| Location pin combination(定位销组合) |                                   |           |                         |
|---------------------------------|-----------------------------------|-----------|-------------------------|
| (编号) Number                     | Number of positioning pins(定位销数量) | Angle(角度) | Series(系列)--2B          |
| G                               | One(1)                            |           | (Zero degrees)0°        |
| A                               | Two(2)                            | A         | Thirty degrees(30°)     |
| B                               | Two(2)                            |           | Forty-five degrees(45°) |
| C                               | Two(2)                            |           | Sixty degrees(60°)      |
| D                               | Two(2)                            | γ         | 95 degrees (95°)        |
| E                               | Two(2)                            | β         | 120 degrees(120°)       |
| F                               | Two(2)                            |           | 145 degrees(145°)       |
| J                               | Two(2)                            | A         | 37.5degrees(37.5°)      |
| K                               | Two(2)                            |           | 52.5degrees(52.5°)      |
| L                               | Two(2)                            | γ         | Seventy degrees(70°)    |



(Welded mother adhesive core) 焊接型母胶芯



Positive view of the socket (插座正视图)

ZC G.2B.P26.C X L

- Model(型号)
- Positioning pin(定位销)
- Series(系列)
- Needle core configuration(针芯配置)
- Outer casing(外壳)
- Insulator(绝缘体)
- Needle core(针芯)

|        | A      | B      | C√     | ANGLE   |       |
|--------|--------|--------|--------|---------|-------|
| 5-10   | ±0.02  | ±0.05  | ±0.1   | 0°-30°  | ±0.1° |
| 50-100 | ±0.1   | ±0.15  | ±0.2   | 61°-90° | ±0.5° |
| 50-100 | ±0.15  | ±0.2   | ±0.25  |         |       |
| 100-   | ±0.15% | ±0.20% | ±0.25% |         |       |

DESIGNED(设计) 广东星坤科技股份有限公司  
 CHECKED(校对)  
 APPROVED(审核) 日期  
 生效 REVISIONS  
 文件工程章  
 www.helloxkb.com www.helloxkb.cn

DATE(日期) SCALE(比额) N/A(不适用)  
 DATE(日期) VIEW(视图)   
 DATE(日期) UNIT(单位) MM  
 MATERIAL (材料)  
 XKB INDUSTRIAL PRECISION CO.,LIMITED

MODEL TYPE  
 型号类型: ZCG.2B.P26.CXL  
 PART NO. 2B26 core socket  
 名称: 2B26芯插座  
 DWG NO.:  
 WEIGHT(重量) SHEET(表) REVISION(修订)  
 1/1 A0