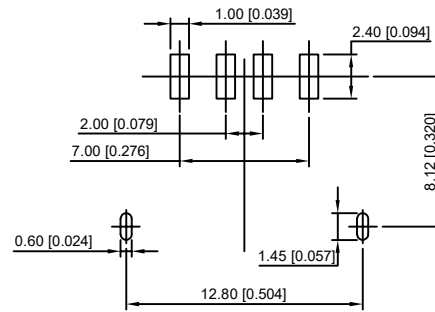
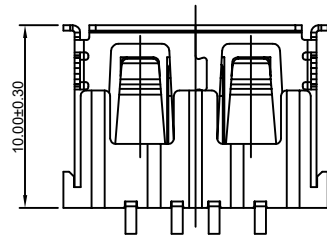
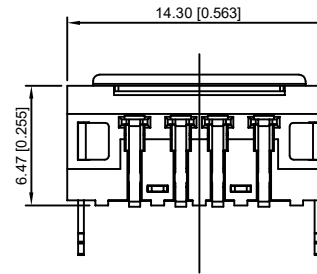
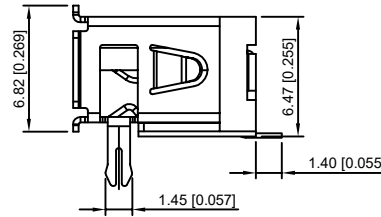
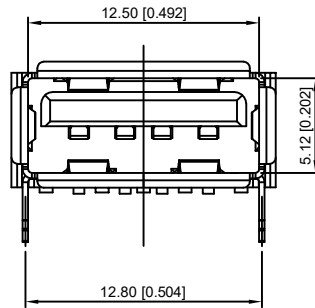
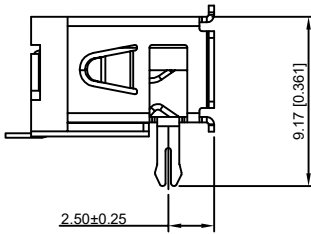


XKB Connectivity



FRONT EDGE OF CONNECTOR  
PCB LAYOUT (T=1.60mm)

XKB Connectivity

XKB Connectivity

NOTES:

1.材料规格 MATERIAL SPECIFICATION:

- 1) 胶壳 HOUSING MATERIAL :BLACK LCP ROHS;
- 2) 外壳 SHELL MATERIAL :C2680 T=0.30  
电镀 PLATING:NICKE;
- 3) 端子 TERMINAL: C5191 T=0.25  
电镀 PLATING:SEMI GOLD TIN G/F;

2.电气特性 ELECTRICAL CHARACTERISTIC:

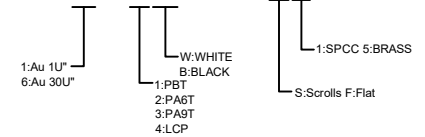
- 1) 绝缘电阻 INSULATION RESISTANCE: 1000MΩ MIN;
- 2) 接触电阻 CONTACT RESISTANCE: 30mΩ MAX;
- 3) 耐压 WITHSTANDING VOLTAGE: 500V AC;

3.机器特性 MECHANICAL CHARACTERISTICS:

- 1) 插入力 INSERTION FORCE:3.57Kgf Max;
- 2) 拔出力 EXTRACTION FORCE:1.02Kgf Min;

XKB Connectivity

U221-04XN-4BVS65-S5D



DSND		DATE		SCALE: N/A	MODEL TYPE: USB 2.0
DWN		DATE		VIEW:	PART NO.:
CHKD		DATE		UNIT: mm/in	DWG NO.:
APPD		DATE		SIZE: A4	U221-04XN-4BVS65-S5D
				WEIGHT	SHEET
XKB INDUSTRIAL PRECISION CO.,LIMITED				1.0g	1/1
				REVISION	A0

					ANGLAR	±5°
ΔX					L ≤ 4	±0.2
ΔX					4 < L ≤ 16	±0.3
ΔX					16 < L ≤ 63	±0.4
MARK	DESCRIPTION	DATE	REVISED	APPROVED	L > 63	±0.5
REVISIONS						UNSPECIFIED TOLERANCES
www.xk-dg.cn www.helloxkb.com www.helloxkb.cn						