



Part Number : [15976021](#)

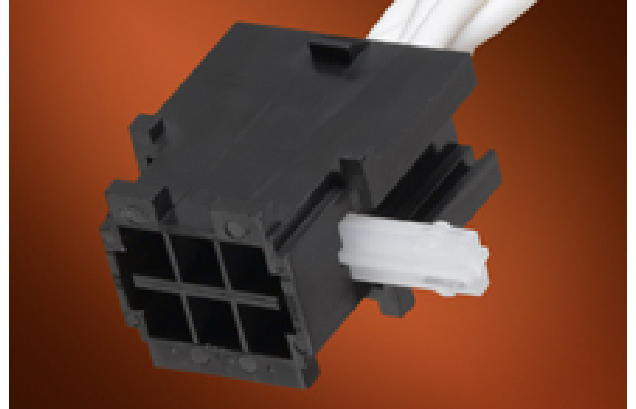
Product Description : Mini-Fit TPA Plug Housing, 4.20mm Pitch, Dual Row with Secondary Terminal Retention, 2 Circuits, Black

Series Number : 30068

Status : Active

Product Category : Connector Housings

Engineering Number : 30068-02



Documents & Resources

Drawings

[Packaging Design Drawing PK-30068-002-001.pdf](#)

Specifications

[Product Specification PS-45750-001-001.pdf](#)

[Product Specification PS-5556-003-001.pdf](#)

Product Environment Compliance

Compliance

GADSL/IMDS	Not Relevant
China RoHS	
EU ELV	Not Relevant
Low-Halogen Status	Not Low-Halogen per IEC 61249-2-21
REACH SVHC	Not Contained per D(2024)4144-DC (27 June 2024)
EU RoHS	Compliant per EU 2015/863

[Multiple Part Product Compliance Statements](#)

- Eu RoHS
- REACH SVHC
- Low-Halogen

[Multiple Part Industry Compliance Documents](#)

- IPC 1752A Class C
- IPC 1752A Class D

- Molex Product Compliance Declaration
- IEC-62474
- chemSHERPA (xml)

EU RoHS Certificate of Compliance

Part Details

General

Status	Active
Category	Connector Housings
Series	30068
Description	Mini-Fit TPA Plug Housing, 4.20mm Pitch, Dual Row with Secondary Terminal Retention, 2 Circuits, Black
Application	Power, Wire-to-Wire
Comments	Current = 13A max. per circuit when header is mated to a receptacle loaded with 45750 series terminals crimped to 16 AWG wire. See Molex product specification PS-45750-001 for additional current derating information.
Product Family	Mini-Fit Family Power Connectors
Product Name	Mini-Fit TPA
UPC	800754202312

Agency

CSA	LR19980
UL	E29179

Physical

Circuits (maximum)	2
Color - Resin	Black
Flammability	94V-0
Gender	Plug
Glow-Wire Capable	No
Material - Resin	Nylon
Net Weight	2.446/g

Number of Rows	2
Packaging Type	Bag
Panel Mount	No, Yes
Pitch - Mating Interface	4.20mm
Stackable	No
Temperature Range - Operating	-40° to +105°C

Solder Process Data

Lead-Free Process Capability	N/A
------------------------------	-----

Mates With / Use With

Mates with Part(s)

Description	Part Number
Mini-Fit TPA Dual Row Vertical Headers	<u>30069</u>
Mini-Fit TPA Dual Row Right-Angle Headers	<u>30070</u>

Use with Part(s)

Description	Part Number
Mini-Fit TPA Keys	<u>30072</u>