

# PTCM-MP-P 0,34-0,75 - Crimp contact



1013780

<https://www.phoenixcontact.com/us/products/1013780>

Please be informed that the data shown in this PDF document is generated from our online catalog. Please find the complete data in the user documentation. Our general terms of use for downloads are valid.



Crimp contact, nominal current: 6 A, contact connection type: Socket, connection method: Crimp connection, contact surface: Tin, type of packaging: Bulk goods

## Commercial data

Item number	1013780
Packing unit	100 pc
Minimum order quantity	100 pc
Sales key	AA01
Product key	AAACPD
GTIN	4055626492568
Weight per piece (including packing)	0.419 g
Weight per piece (excluding packing)	0.403 g
Customs tariff number	85366990
Country of origin	CZ

# PTCM-MP-P 0,34-0,75 - Crimp contact



1013780

<https://www.phoenixcontact.com/us/products/1013780>

## Technical data

### Product properties

Product type	Crimp contact
Product family	PTCM-MP-P
Pitch	0 mm

### Connection data

Connection method	Crimp connection
Contact connection type	Socket
Stripping length	4.1 mm ... 4.6 mm
Conductor cross section flexible	0.34 mm <sup>2</sup> ... 0.75 mm <sup>2</sup>
Conductor cross section AWG	22 ... 18

### Material specifications

Contact surface	Tin Sn
Contact surface material	Tin
Metal surface terminal point (top layer)	Tin (4 - 8 µm Sn)
Metal surface contact area (top layer)	Tin (4 - 8 µm Sn)
Surface characteristics	hot-dip tin-plated
Contact material	Cu alloy

### Dimensions

Pitch	0 mm
-------	------

### Electrical properties

Nominal current I <sub>N</sub>	6 A
--------------------------------	-----

### Packaging specifications

Type of packaging	Bulk goods
-------------------	------------

# PTCM-MP-P 0,34-0,75 - Crimp contact



1013780

<https://www.phoenixcontact.com/us/products/1013780>

## Classifications

### ECLASS

ECLASS-12.0	27460403
ECLASS-11.0	27460403
ECLASS-13.0	27460403

### ETIM

ETIM 9.0	EC000796
----------	----------

### UNSPSC

UNSPSC 21.0	39121500
-------------	----------

# PTCM-MP-P 0,34-0,75 - Crimp contact



1013780

<https://www.phoenixcontact.com/us/products/1013780>

## Environmental product compliance

### EU RoHS

Fulfills EU RoHS substance requirements	Yes, No exemptions
-----------------------------------------	--------------------

### China RoHS

Environment friendly use period (EFUP)	EFUP-E
	No hazardous substances above the limits

### EU REACH SVHC

REACH candidate substance (CAS No.)	No substance above 0.1 wt%
-------------------------------------	----------------------------

# PTCM-MP-P 0,34-0,75 - Crimp contact



1013780

<https://www.phoenixcontact.com/us/products/1013780>

## Accessories

### CRIMPFOX-P CC 0.75 L - Crimping pliers

1064998

<https://www.phoenixcontact.com/us/products/1064998>



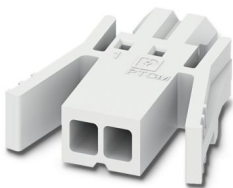
Crimping pliers, for COMBICON crimp connectors with cross section: 0.14 ... 0.75 mm<sup>2</sup>. Unlockable pressure lock, precise parallel crimping, front entry, B crimp, incl. 2 positioning aids

---

### PTCM 0,5/ 2-PL-2,5 WH - PCB connectors

1015464

<https://www.phoenixcontact.com/us/products/1015464>



PCB connector, nominal cross section: 0.75 mm<sup>2</sup>, color: white, nominal current: 6 A, rated voltage (III/2): 160 V, contact surface: Tin, contact connection type: Socket, number of potentials: 2, number of rows: 1, number of positions: 2, number of connections: 2, product range: PTCM 0,5/...-PL, pitch: 2.5 mm, connection method: Crimp connection, conductor/PCB connection direction: 0 °, plug-in system: COMBICON PTSM, locking: Snap-in locking, mounting: Self-locking flange, type of packaging: packed in cardboard

# PTCM-MP-P 0,34-0,75 - Crimp contact

1013780

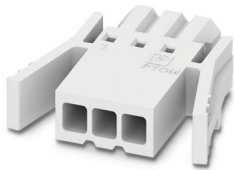
<https://www.phoenixcontact.com/us/products/1013780>



## PTCM 0,5/ 3-PL-2,5 WH - PCB connectors

1015463

<https://www.phoenixcontact.com/us/products/1015463>

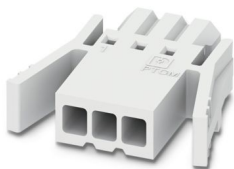


PCB connector, nominal cross section:  $0.75 \text{ mm}^2$ , color: white, nominal current: 6 A, rated voltage (III/2): 160 V, contact surface: Tin, contact connection type: Socket, number of potentials: 3, number of rows: 1, number of positions: 3, number of connections: 3, product range: PTCM 0,5/...-PL, pitch: 2.5 mm, connection method: Crimp connection, conductor/PCB connection direction:  $0^\circ$ , plug-in system: COMBICON PTSM, locking: Snap-in locking, mounting: Self-locking flange, type of packaging: packed in cardboard

## PTCM 0,5/ 4-PL-2,5 WH - PCB connectors

1015462

<https://www.phoenixcontact.com/us/products/1015462>



PCB connector, nominal cross section:  $0.75 \text{ mm}^2$ , color: white, nominal current: 6 A, rated voltage (III/2): 160 V, contact surface: Tin, contact connection type: Socket, number of potentials: 4, number of rows: 1, number of positions: 4, number of connections: 4, product range: PTCM 0,5/...-PL, pitch: 2.5 mm, connection method: Crimp connection, conductor/PCB connection direction:  $0^\circ$ , plug-in system: COMBICON PTSM, locking: Snap-in locking, mounting: Self-locking flange, type of packaging: packed in cardboard

# PTCM-MP-P 0,34-0,75 - Crimp contact

1013780

<https://www.phoenixcontact.com/us/products/1013780>



## PTCM 0,5/ 5-PL-2,5 WH - PCB connectors

1015461

<https://www.phoenixcontact.com/us/products/1015461>

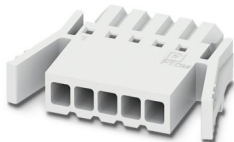


PCB connector, nominal cross section: 0.75 mm<sup>2</sup>, color: white, nominal current: 6 A, rated voltage (III/2): 160 V, contact surface: Tin, contact connection type: Socket, number of potentials: 5, number of rows: 1, number of positions: 5, number of connections: 5, product range: PTCM 0,5/...-PL, pitch: 2.5 mm, connection method: Crimp connection, conductor/PCB connection direction: 0 °, plug-in system: COMBICON PTSM, locking: Snap-in locking, mounting: Self-locking flange, type of packaging: packed in cardboard

## PTCM 0,5/ 6-PL-2,5 WH - PCB connectors

1015460

<https://www.phoenixcontact.com/us/products/1015460>



PCB connector, nominal cross section: 0.75 mm<sup>2</sup>, color: white, nominal current: 6 A, rated voltage (III/2): 160 V, contact surface: Tin, contact connection type: Socket, number of potentials: 6, number of rows: 1, number of positions: 6, number of connections: 6, product range: PTCM 0,5/...-PL, pitch: 2.5 mm, connection method: Crimp connection, conductor/PCB connection direction: 0 °, plug-in system: COMBICON PTSM, locking: Snap-in locking, mounting: Self-locking flange, type of packaging: packed in cardboard

# PTCM-MP-P 0,34-0,75 - Crimp contact

1013780

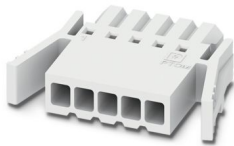
<https://www.phoenixcontact.com/us/products/1013780>



## PTCM 0,5/ 7-PL-2,5 WH - PCB connectors

1015459

<https://www.phoenixcontact.com/us/products/1015459>



PCB connector, nominal cross section: 0.75 mm<sup>2</sup>, color: white, nominal current: 6 A, rated voltage (III/2): 160 V, contact surface: Tin, contact connection type: Socket, number of potentials: 7, number of rows: 1, number of positions: 7, number of connections: 7, product range: PTCM 0,5/...-PL, pitch: 2.5 mm, connection method: Crimp connection, conductor/PCB connection direction: 0 °, plug-in system: COMBICON PTSM, locking: Snap-in locking, mounting: Self-locking flange, type of packaging: packed in cardboard

## PTCM 0,5/ 8-PL-2,5 WH - PCB connectors

1015458

<https://www.phoenixcontact.com/us/products/1015458>



PCB connector, nominal cross section: 0.75 mm<sup>2</sup>, color: white, nominal current: 6 A, rated voltage (III/2): 160 V, contact surface: Tin, contact connection type: Socket, number of potentials: 8, number of rows: 1, number of positions: 8, number of connections: 8, product range: PTCM 0,5/...-PL, pitch: 2.5 mm, connection method: Crimp connection, conductor/PCB connection direction: 0 °, plug-in system: COMBICON PTSM, locking: Snap-in locking, mounting: Self-locking flange, type of packaging: packed in cardboard



# PTCM-MP-P 0,34-0,75 - Crimp contact

1013780

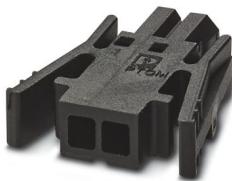
<https://www.phoenixcontact.com/us/products/1013780>



## PTCM 0,5/ 2-PL-2,5 BK - PCB connectors

1048116

<https://www.phoenixcontact.com/us/products/1048116>



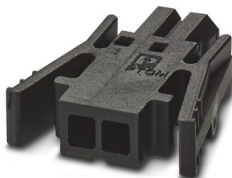
PCB connector, nominal cross section: 0.75 mm<sup>2</sup>, color: black, nominal current: 6 A, rated voltage (III/2): 160 V, contact surface: Tin, contact connection type: Socket, number of rows: 1, number of positions: 2, product range: PTCM 0,5/..-PL, pitch: 2.5 mm, connection method: Crimp connection, conductor/PCB connection direction: 0 °, plug-in system: COMBICON PTSM, locking: Snap-in locking, mounting: Self-locking flange, type of packaging: packed in cardboard

---

## PTCM 0,5/ 3-PL-2,5 BK - PCB connectors

1048117

<https://www.phoenixcontact.com/us/products/1048117>



PCB connector, nominal cross section: 0.75 mm<sup>2</sup>, color: black, nominal current: 6 A, rated voltage (III/2): 160 V, contact surface: Tin, contact connection type: Socket, number of rows: 1, number of positions: 3, product range: PTCM 0,5/..-PL, pitch: 2.5 mm, connection method: Crimp connection, conductor/PCB connection direction: 0 °, plug-in system: COMBICON PTSM, locking: Snap-in locking, mounting: Self-locking flange, type of packaging: packed in cardboard

# PTCM-MP-P 0,34-0,75 - Crimp contact

1013780

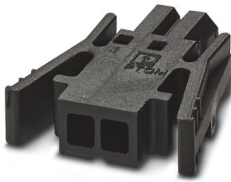
<https://www.phoenixcontact.com/us/products/1013780>



## PTCM 0,5/ 4-PL-2,5 BK - PCB connectors

1048118

<https://www.phoenixcontact.com/us/products/1048118>



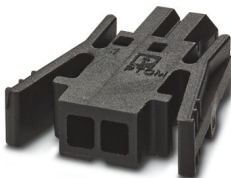
PCB connector, nominal cross section: 0.75 mm<sup>2</sup>, color: black, nominal current: 6 A, rated voltage (III/2): 160 V, contact surface: Tin, contact connection type: Socket, number of rows: 1, number of positions: 4, product range: PTCM 0,5/...-PL, pitch: 2.5 mm, connection method: Crimp connection, conductor/PCB connection direction: 0 °, plug-in system: COMBICON PTSM, locking: Snap-in locking, mounting: Self-locking flange, type of packaging: packed in cardboard

---

## PTCM 0,5/ 5-PL-2,5 BK - PCB connectors

1048119

<https://www.phoenixcontact.com/us/products/1048119>



PCB connector, nominal cross section: 0.75 mm<sup>2</sup>, color: black, nominal current: 6 A, rated voltage (III/2): 160 V, contact surface: Tin, contact connection type: Socket, number of potentials: 5, number of rows: 1, number of positions: 5, number of connections: 5, product range: PTCM 0,5/...-PL, pitch: 2.5 mm, connection method: Crimp connection, conductor/PCB connection direction: 0 °, plug-in system: COMBICON PTSM, locking: Snap-in locking, mounting: Self-locking flange, type of packaging: packed in cardboard

# PTCM-MP-P 0,34-0,75 - Crimp contact

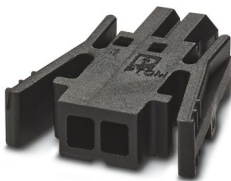
1013780

<https://www.phoenixcontact.com/us/products/1013780>

## PTCM 0,5/ 6-PL-2,5 BK - PCB connectors

1048121

<https://www.phoenixcontact.com/us/products/1048121>



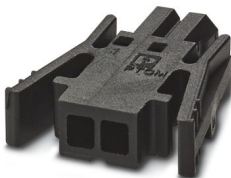
PCB connector, nominal cross section: 0.75 mm<sup>2</sup>, color: black, nominal current: 6 A, rated voltage (III/2): 160 V, contact surface: Tin, contact connection type: Socket, number of potentials: 6, number of rows: 1, number of positions: 6, number of connections: 6, product range: PTCM 0,5/...-PL, pitch: 2.5 mm, connection method: Crimp connection, conductor/PCB connection direction: 0 °, plug-in system: COMBICON PTSM, locking: Snap-in locking, mounting: Self-locking flange, type of packaging: packed in cardboard

---

## PTCM 0,5/ 7-PL-2,5 BK - PCB connectors

1048122

<https://www.phoenixcontact.com/us/products/1048122>



PCB connector, nominal cross section: 0.75 mm<sup>2</sup>, color: black, nominal current: 6 A, rated voltage (III/2): 160 V, contact surface: Tin, contact connection type: Socket, number of potentials: 7, number of rows: 1, number of positions: 7, number of connections: 7, product range: PTCM 0,5/...-PL, pitch: 2.5 mm, connection method: Crimp connection, conductor/PCB connection direction: 0 °, plug-in system: COMBICON PTSM, locking: Snap-in locking, mounting: Self-locking flange, type of packaging: packed in cardboard

# PTCM-MP-P 0,34-0,75 - Crimp contact

1013780

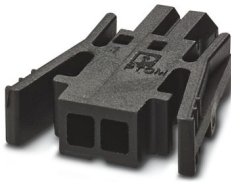
<https://www.phoenixcontact.com/us/products/1013780>



## PTCM 0,5/ 8-PL-2,5 BK - PCB connectors

1048123

<https://www.phoenixcontact.com/us/products/1048123>



PCB connector, nominal cross section: 0.75 mm<sup>2</sup>, color: black, nominal current: 6 A, rated voltage (III/2): 160 V, contact surface: Tin, contact connection type: Socket, number of potentials: 8, number of rows: 1, number of positions: 8, number of connections: 8, product range: PTCM 0,5/...-PL, pitch: 2.5 mm, connection method: Crimp connection, conductor/PCB connection direction: 0 °, plug-in system: COMBICON PTSM, locking: Snap-in locking, mounting: Self-locking flange, type of packaging: packed in cardboard

---

Phoenix Contact 2024 © - all rights reserved

<https://www.phoenixcontact.com>

Phoenix Contact USA  
586 Fulling Mill Road  
Middletown, PA 17057, United States  
(+717) 944-1300  
[info@phoenixcon.com](mailto:info@phoenixcon.com)