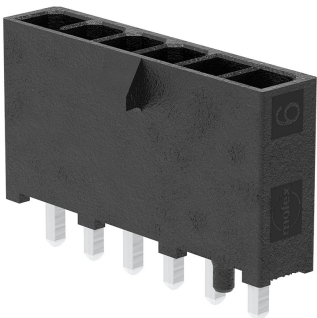




**Part Number :** [2159151006](#)  
**Product Description :** Mini-Fit Max Vertical Header, Single Row, 6 Circuits, Tin (Sn) Plating, Black, Glow-Wire Capable  
**Series Number :** 215915  
**Status :** Active  
**Product Category :** PCB Headers and Receptacles



## Documents & Resources


**Drawings**  
[Drawing 2159151006\\_sd.pdf](#)  
[Packaging Design Drawing 2159150000-PK-000.pdf](#)

**3D Models and Design Files**  
[3D Model 2159151006\\_stp.zip](#)

**Specifications**  
[Product Specification 2125150000-PS-000.pdf](#)  
[Test Summary 2125150000-TS-000.pdf](#)

## Product Environment Compliance

### Compliance

GADSL/IMDS	Not Relevant
China RoHS	
EU ELV	Not Relevant
Low-Halogen Status	Low-Halogen per IEC 61249-2-21
REACH SVHC	Not Contained per D(2024)4144-DC (27 June 2024)
EU RoHS	Compliant per EU 2015/863

[Multiple Part Product Compliance Statements](#)  
- Eu RoHS  
- REACH SVHC  
- Low-Halogen

[Multiple Part Industry Compliance Documents](#)  
- IPC 1752A Class C

- IPC 1752A Class D
- Molex Product Compliance Declaration
- IEC-62474
- chemSHERPA (xml)

## EU RoHS Certificate of Compliance

---

### Part Details

#### General

Status	Active
Category	PCB Headers and Receptacles
Series	215915
Description	Mini-Fit Max Vertical Header, Single Row, 6 Circuits, Tin (Sn) Plating, Black, Glow-Wire Capable
Application	Power, Wire-to-Board
Component Type	PCB Header
Product Family	Mini-Fit Family Power Connectors
Product Name	Mini-Fit Max
UPC	195842608153

#### Agency

UL	E29179
----	--------

#### Electrical

Current - Maximum per Contact	20.0A
Voltage - Maximum	600V AC (RMS)/DC

#### Physical

Breakaway	No
Circuits (Loaded)	6
Circuits (maximum)	6
Color - Resin	Black
Durability (mating cycles max)	20
First Mate / Last Break	No
Flammability	94V-0
Glow-Wire Capable	Yes

Guide to Mating Part	No
Keying to Mating Part	Yes
Lock to Mating Part	Yes
Material - Metal	Copper Alloy
Material - Plating Mating	Tin
Material - Resin	Liquid Crystal Polymer
Net Weight	2.455/g
Number of Rows	1
Orientation	Vertical
Packaging Type	Tray
PCB Locator	Yes
PCB Retention	Yes
PCB Thickness - Recommended	1.60mm
Pitch - Mating Interface	4.20mm
Pitch - Termination Interface	4.20mm
Polarized to Mating Part	Yes
Polarized to PCB	Yes
Shrouded	Fully
Temperature Range - Operating	-40° to +105°C
Termination Interface Style	Through Hole

---

## Mates With / Use With

### Mates with Part(s)

Description	Part Number
Mini-Fit Max Single Row Receptacle Housings	<u>215913</u>