



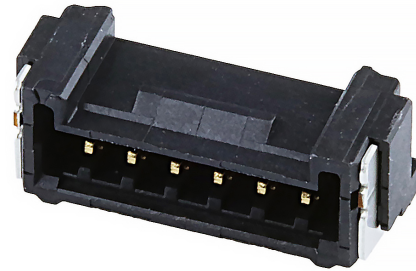
Part Number : [5055670631](#)

Product Description : 1.25mm Pitch, Micro-Lock Plus PCB Header, Single Row, Right-Angle, Surface Mount, 0.38µm Gold Plating, Positive Lock, 6 Circuits, Black

Series Number : 505567

Status : Active

Product Category : PCB Headers and Receptacles



Documents & Resources

Drawings

[Drawing 5055670631_sd.pdf](#)

3D Models and Design Files

[2D Drawing DXF 5055670631.dxf](#)

[2D Drawing DXF \(PDF\) 5055670631.pdf](#)

[3D Model 5055670631_stp.zip](#)


Specifications

[Application Specification 5055650000-AS-000.pdf](#)

[Packaging Specification 5055679200-200.pdf](#)

Product Environment Compliance

Compliance

GADSL/IMDS	Compliant with Exemption 44; 33
China RoHS	
EU ELV	Not Relevant
Low-Halogen Status	Not Low-Halogen per IEC 61249-2-21
REACH SVHC	Not Contained per D(2024)4144-DC (27 June 2024)
EU RoHS	Compliant per EU 2015/863

Multiple Part Product Compliance Statements

- Eu RoHS
- REACH SVHC
- Low-Halogen

Multiple Part Industry Compliance Documents

- IPC 1752A Class C
- IPC 1752A Class D
- Molex Product Compliance Declaration
- IEC-62474
- chemSHERPA (xml)

EU RoHS Certificate of Compliance

Part Details

General

Status	Active
Category	PCB Headers and Receptacles
Series	505567
Description	1.25mm Pitch, Micro-Lock Plus PCB Header, Single Row, Right-Angle, Surface Mount, 0.38µm Gold Plating, Positive Lock, 6 Circuits, Black
Application	Signal, Wire-to-Board
Component Type	PCB Header
Product Family	Micro-Lock Connector System
Product Name	Micro-Lock Plus
UPC	193264125920

Agency

UL	E29179
----	--------

Electrical

Current - Maximum per Contact	1.5A
Voltage - Maximum	50V AC (RMS)/DC

Physical

Breakaway	No
Circuits (Loaded)	6
Circuits (maximum)	6
Color - Resin	Black
Durability (mating cycles max)	30

First Mate / Last Break	No
Glow-Wire Capable	No
Guide to Mating Part	No
Keying to Mating Part	Yes
Lock to Mating Part	Yes
Material - Metal	Brass
Material - Plating Mating	Gold
Material - Plating Termination	Gold
Material - Resin	Polyamide
Net Weight	202.510/mg
Number of Rows	1
Orientation	Right Angle
Packaging Type	Embossed Tape on Reel
PCB Locator	No
PCB Retention	Yes
Pitch - Mating Interface	1.25mm
Pitch - Termination Interface	1.25mm
Plating min - Mating	0.381µm
Plating min - Termination	0.381µm
Polarized to Mating Part	Yes
Polarized to PCB	Yes
Robotic Placement	Vacuum Pick-Up Area
Shrouded	Fully
Stackable	No
Temperature Range - Operating	-40° to +105°C
Termination Interface Style	Surface Mount

Mates With / Use With

Mates with Part(s)

Description	Part Number
1.25mm Pitch, Micro-Lock Plus Single Row Receptacle Housings	<u>505565</u>

This document was generated on Sep 19, 2024