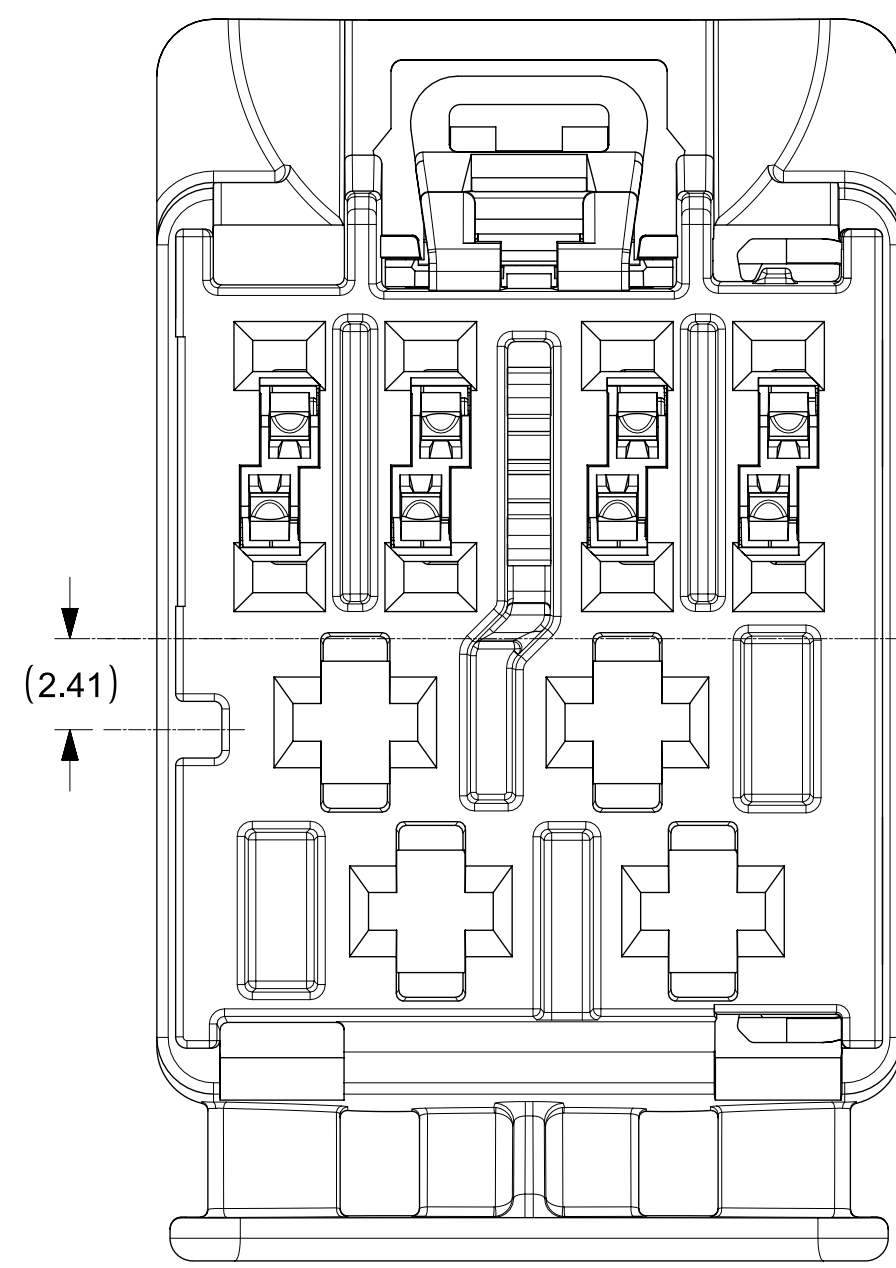
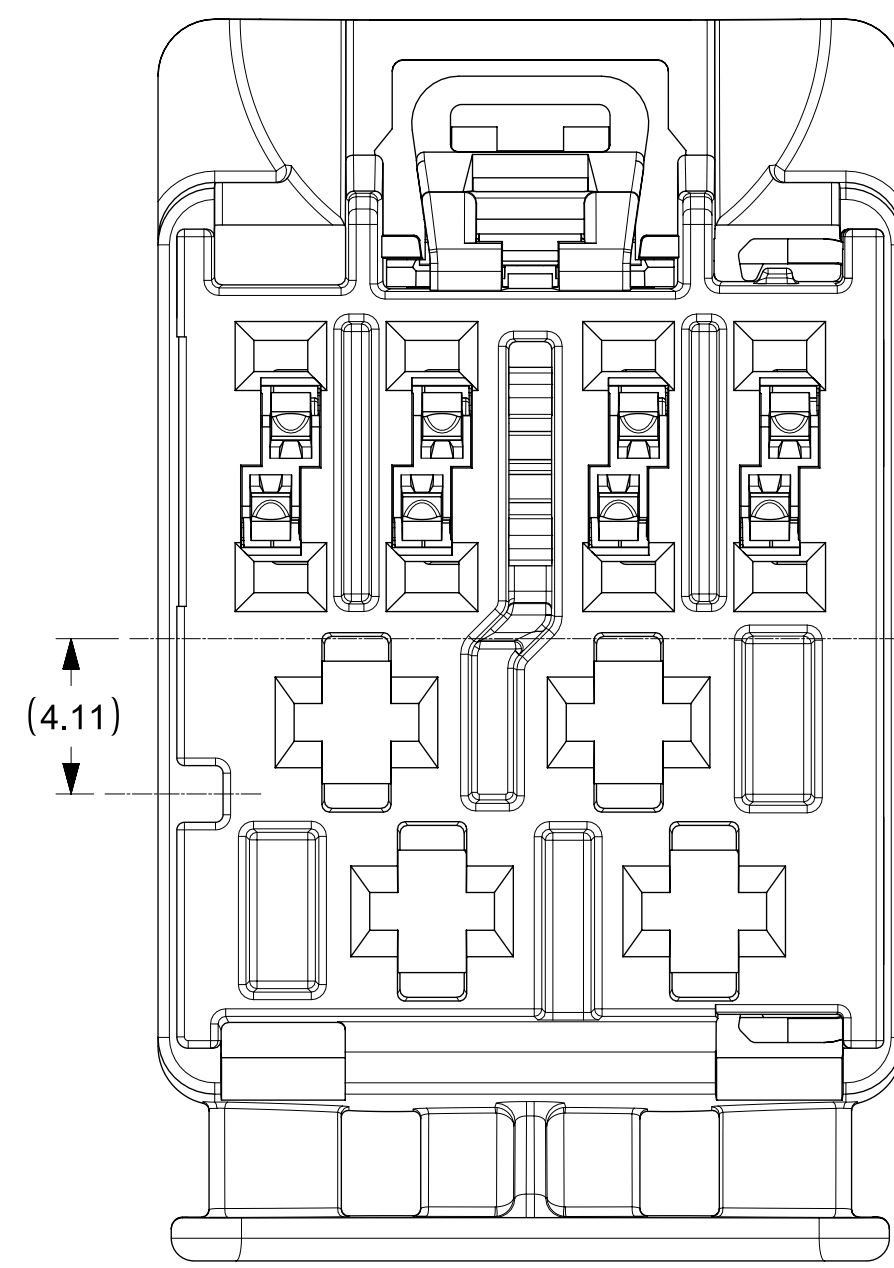


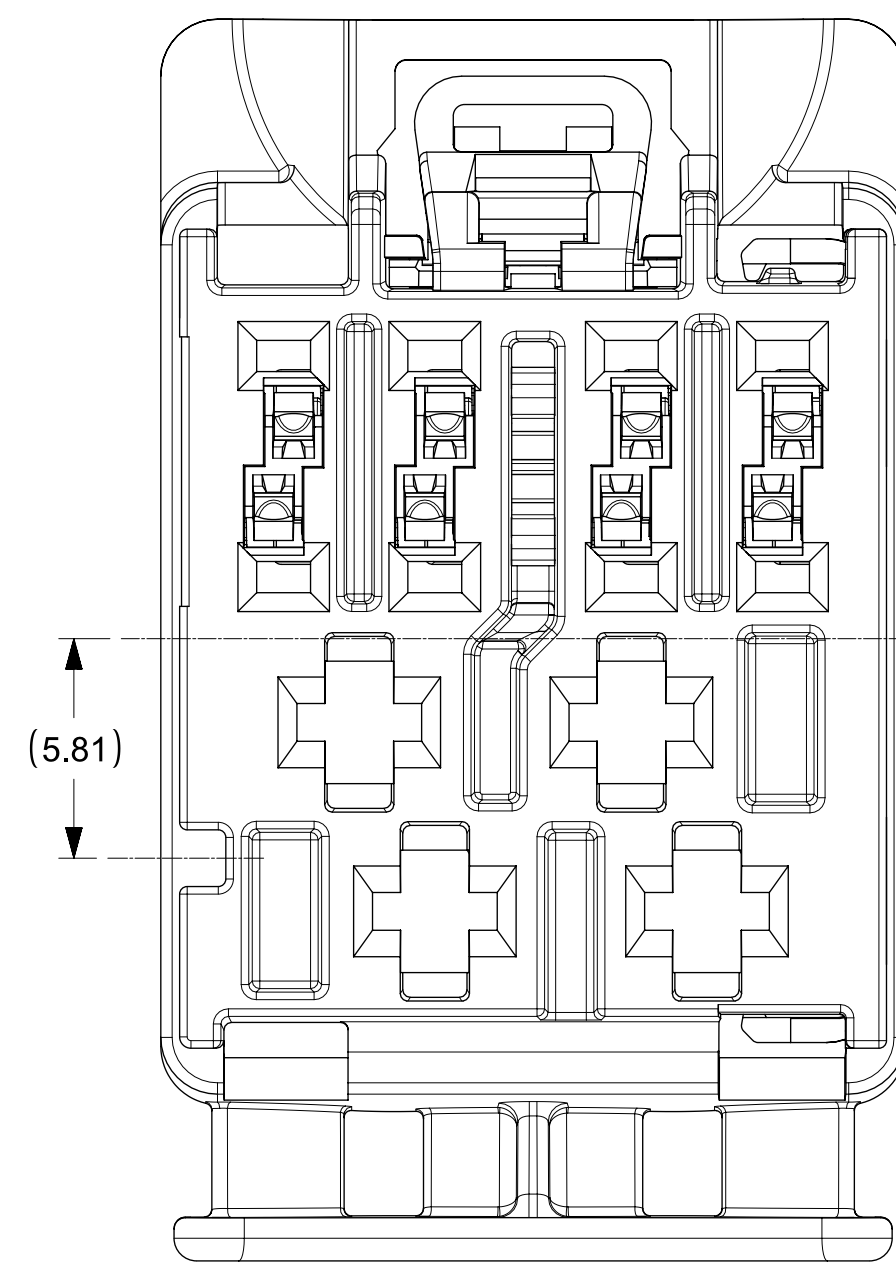
12WAY CONNECTOR ASSEMBLY
KEY 1
P/N 1600260001



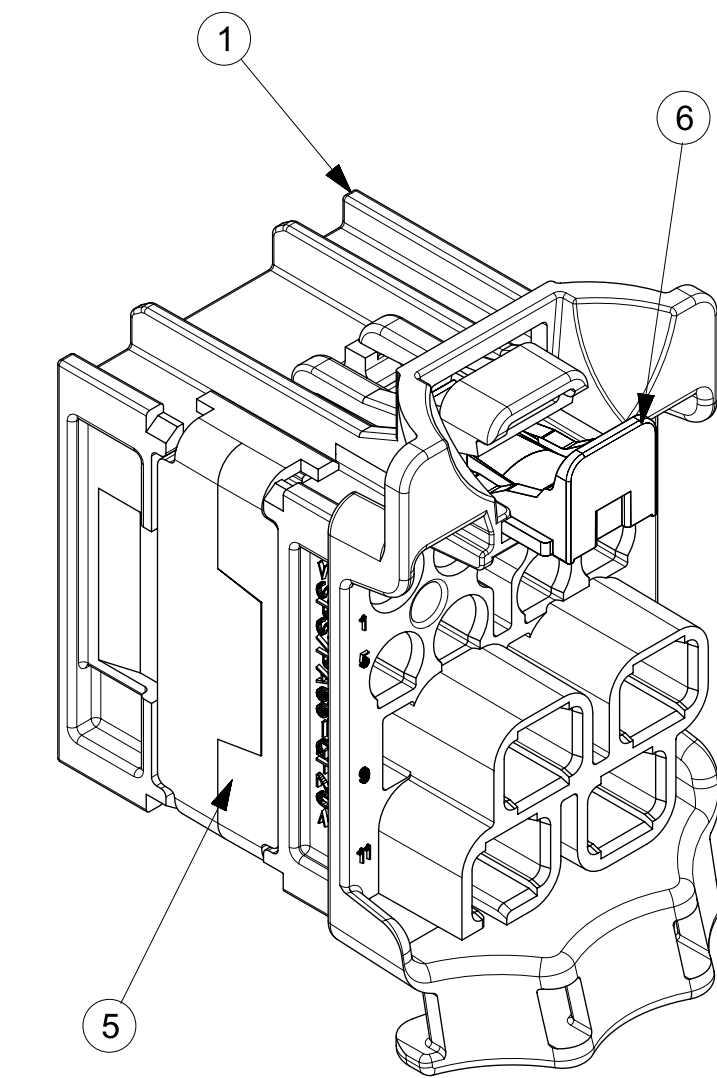
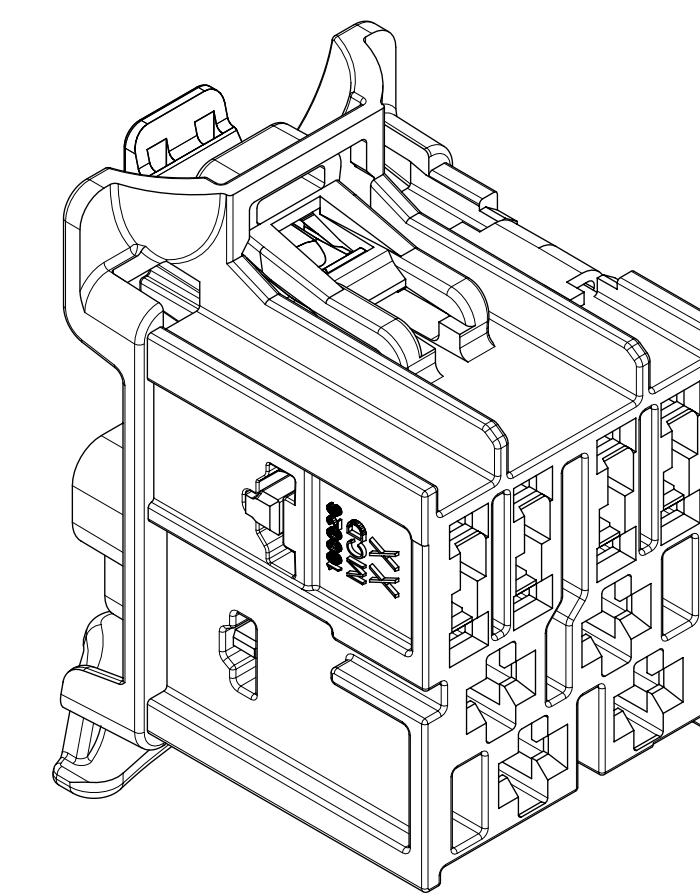
12WAY CONNECTOR ASSEMBLY
KEY 2
P/N 1600260002



12WAY CONNECTOR ASSEMBLY
KEY 3
P/N 1600260003



12WAY CONNECTOR ASSEMBLY
KEY 4
P/N 1600260004



ITEM	DESCRIPTION	COLOR	RECYCLING CODE	WEIGHT (GRAMS)	NO OF ITEMS REQUIRED			
1	CONN HOUSING - KEY 1	BLACK	SPS/PA66-GF20	5.0	1			
2	CONN HOUSING - KEY 2	LT GREEN B	SPS/PA66-GF20	5.0		1		
3	CONN HOUSING - KEY 3	LT PURPLE	SPS/PA66-GF20	5.0			1	
4	CONN HOUSING - KEY 4	LT GRAY	SPS/PA66-GF20	5.0				1
5	ISL	NATURAL	SPS-GF30	0.37	1	1	1	1
6	CPA	NATURAL	PA66-GF50	0.08	1	1	1	1

MOLEX ASSEMBLY PART NO.'S	KEY
1600260001	KEY 1
1600260002	KEY 2
1600260003	KEY 3
1600260004	KEY 4

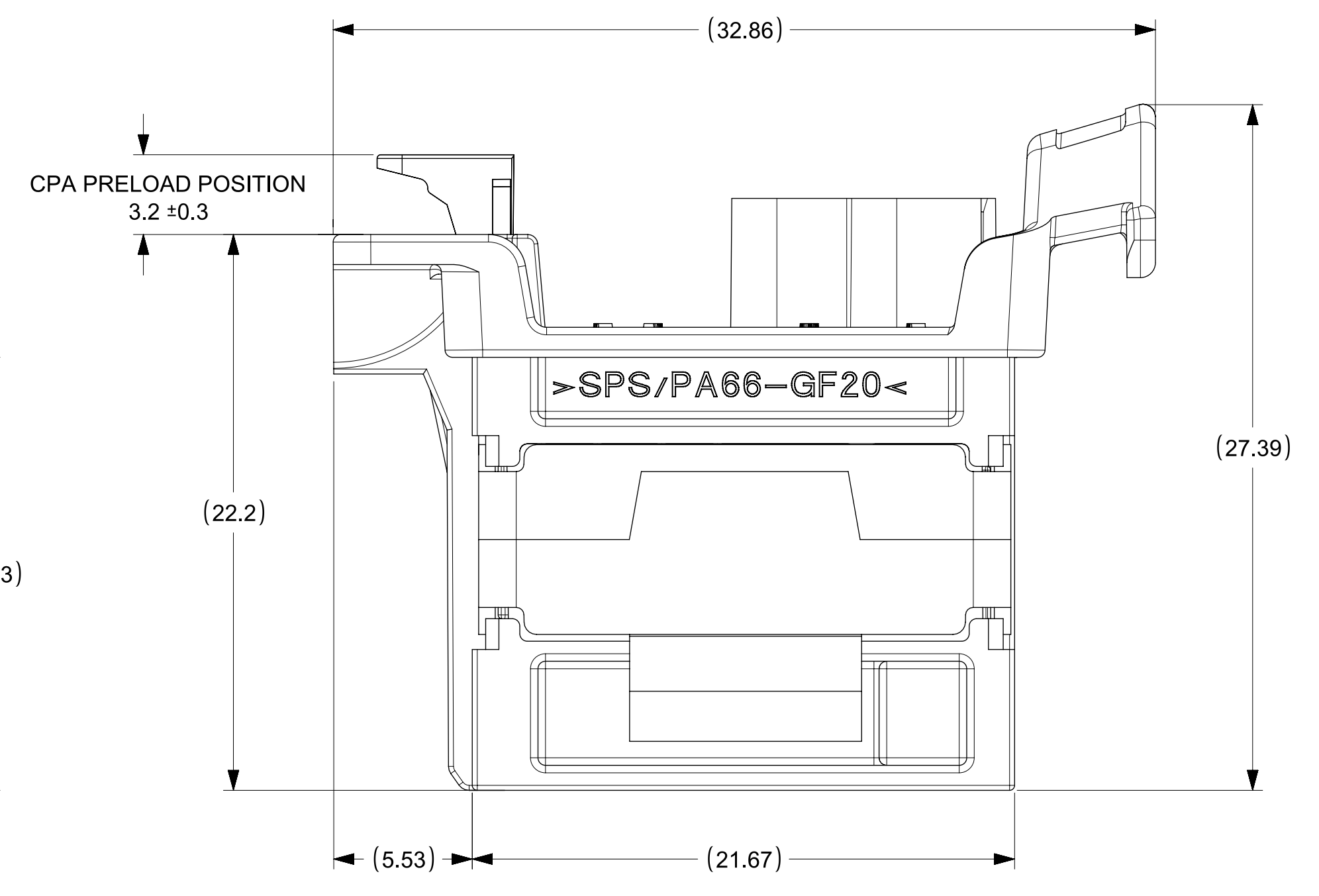
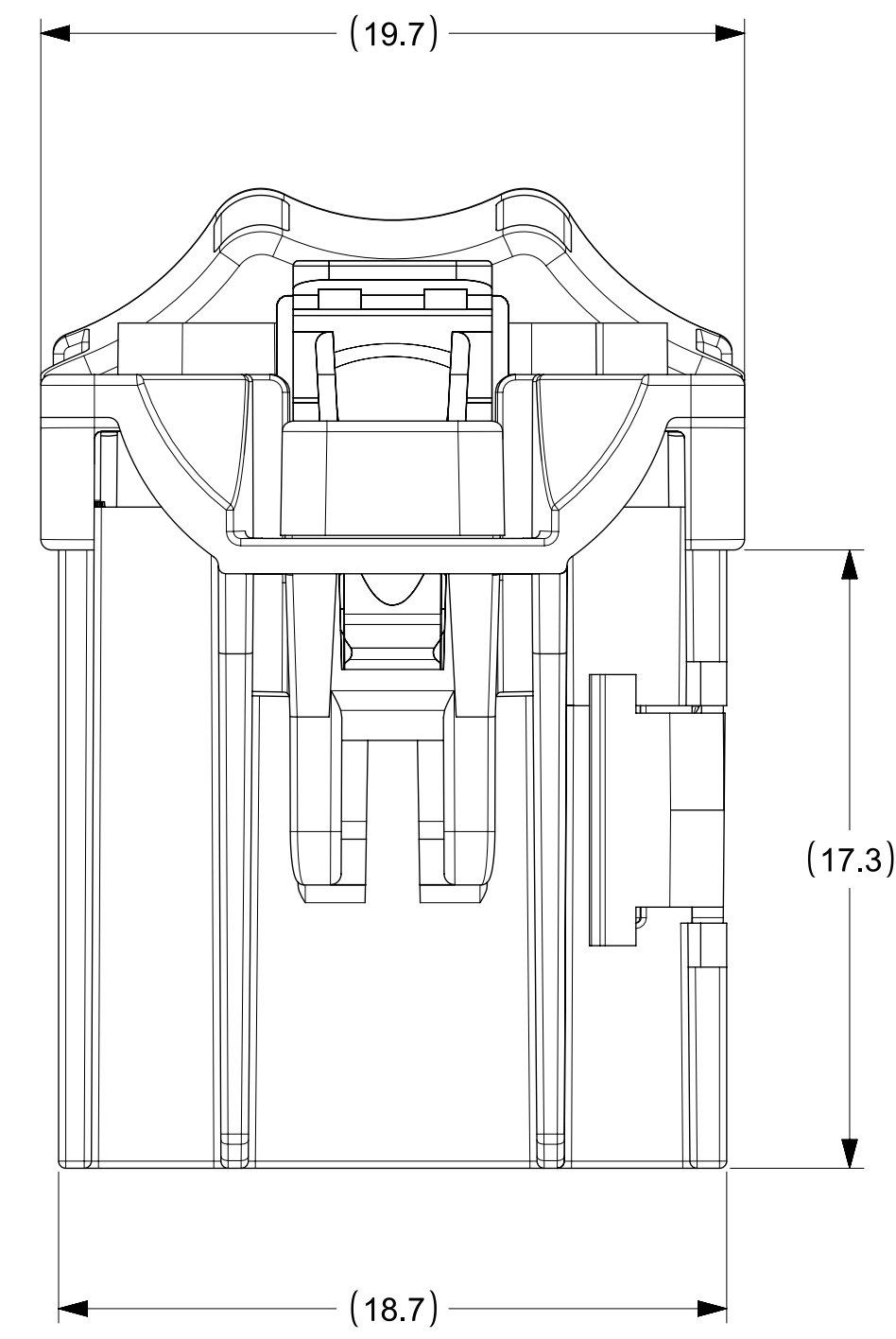
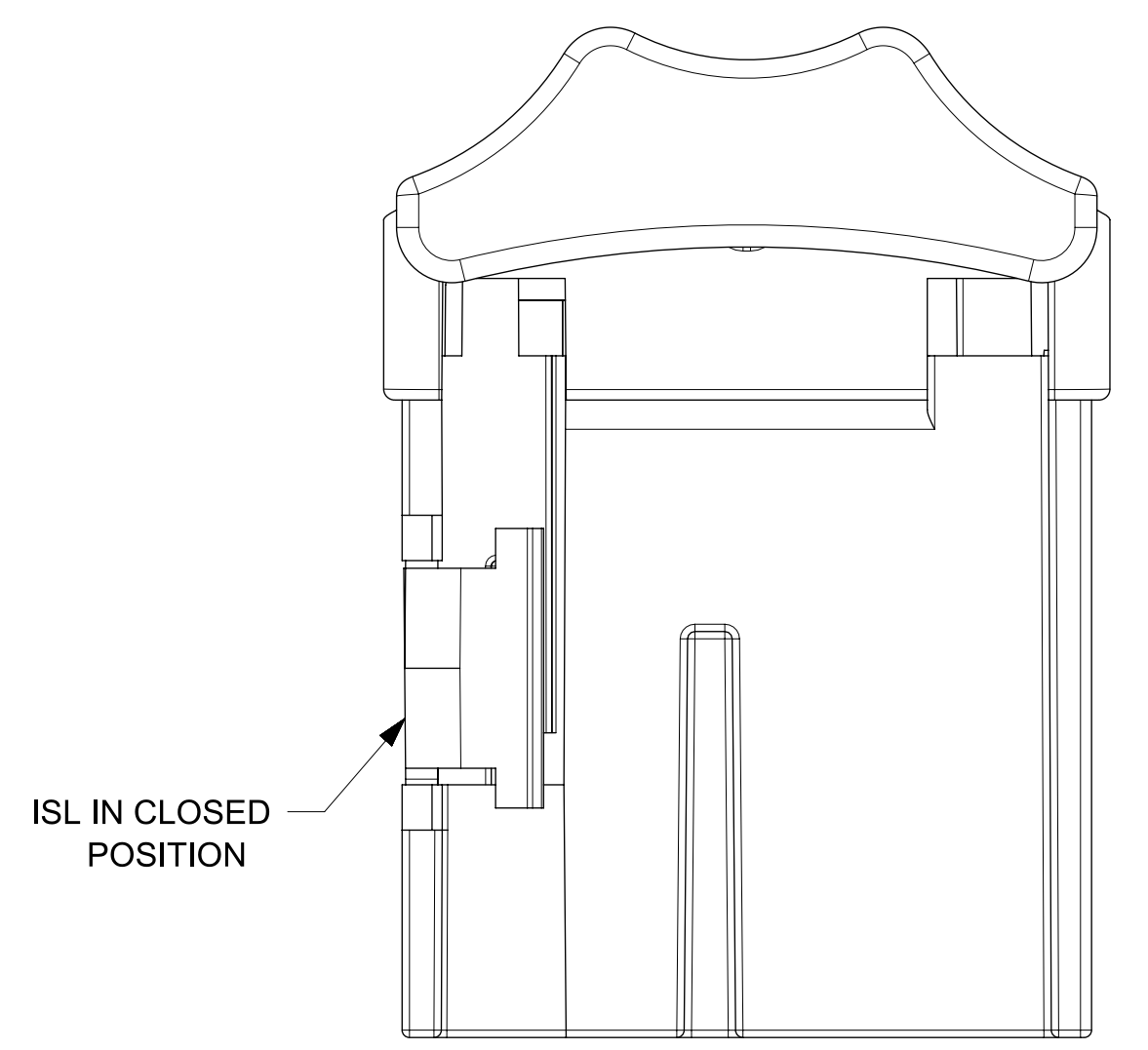
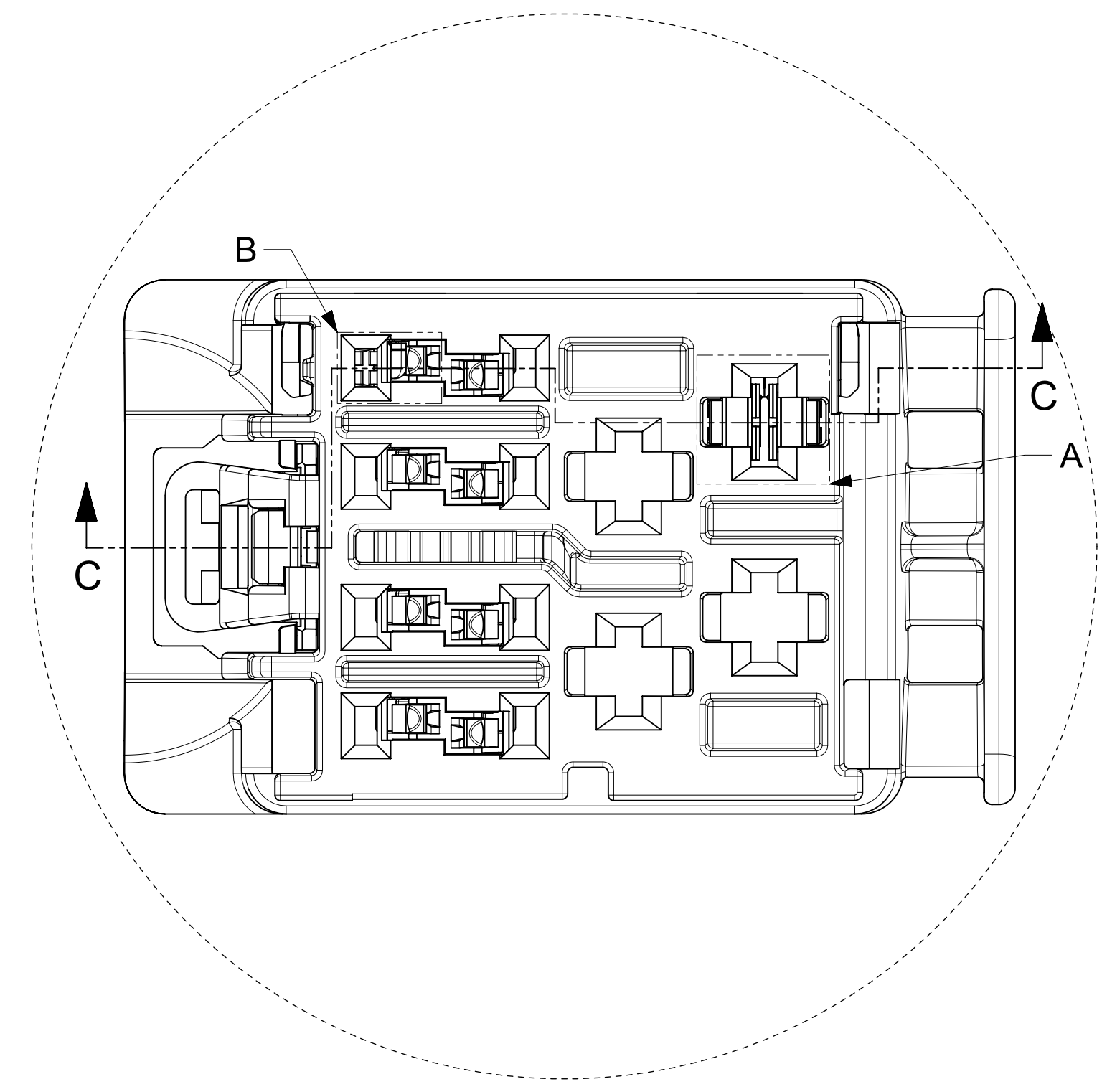
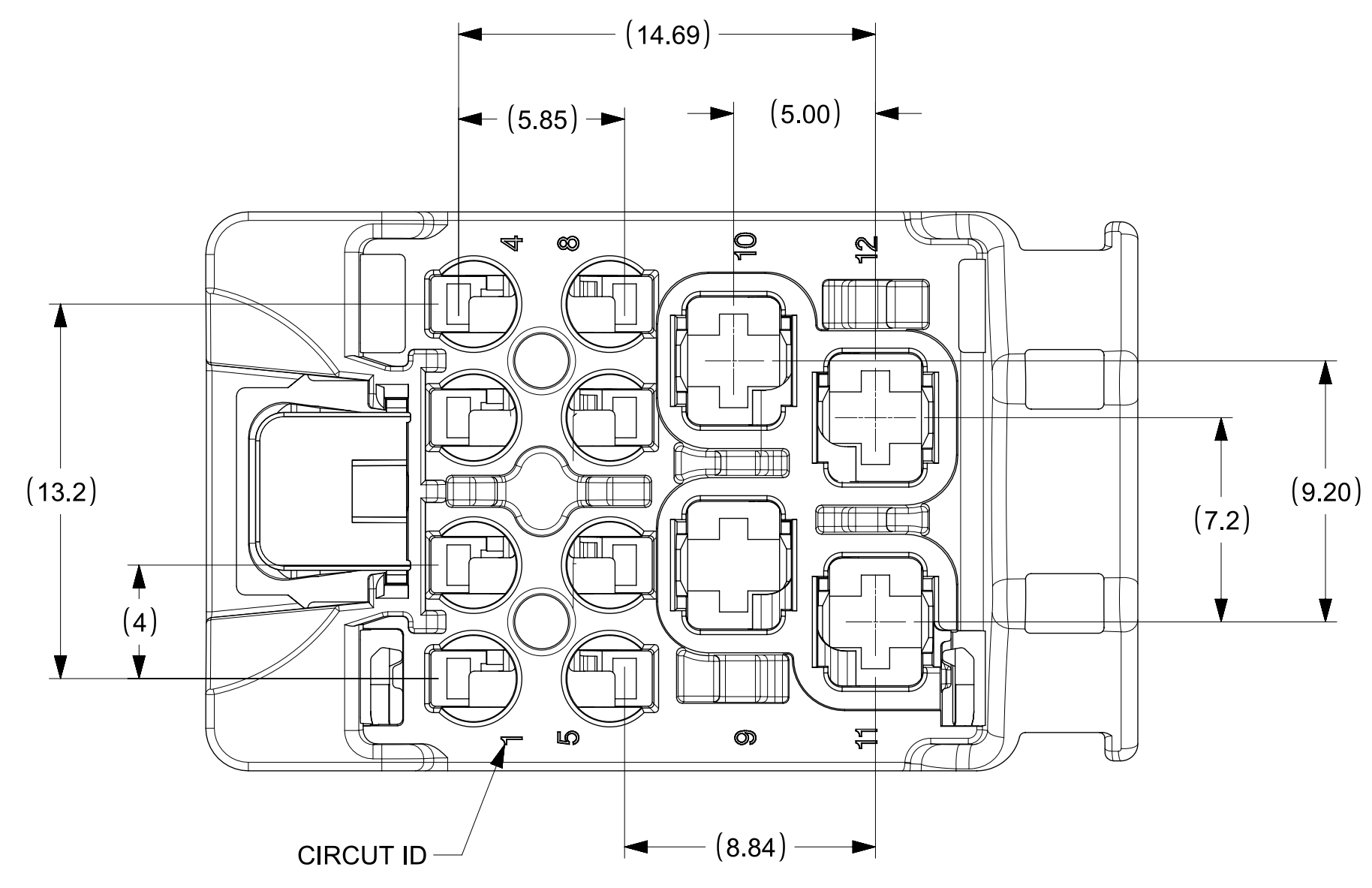
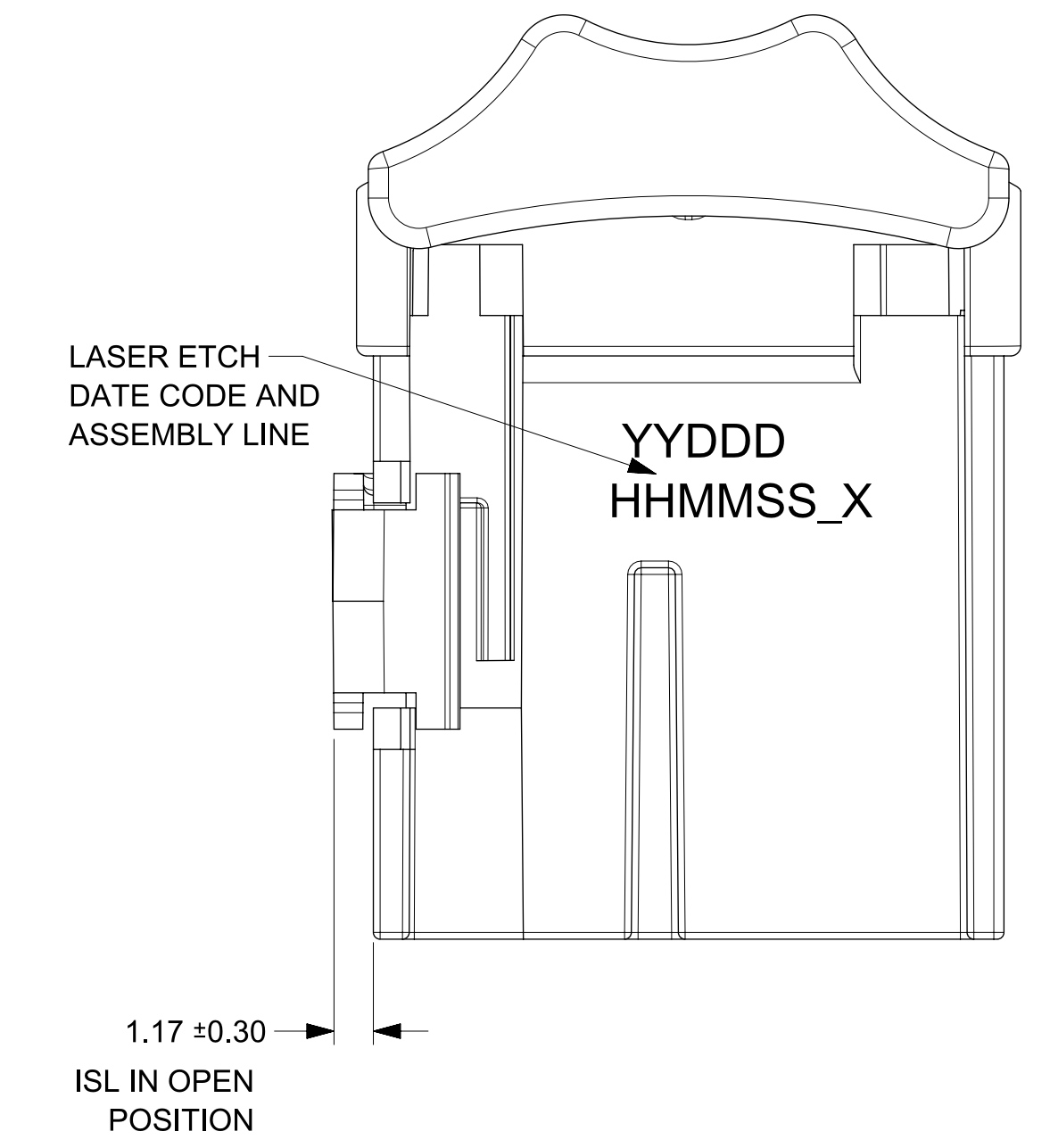
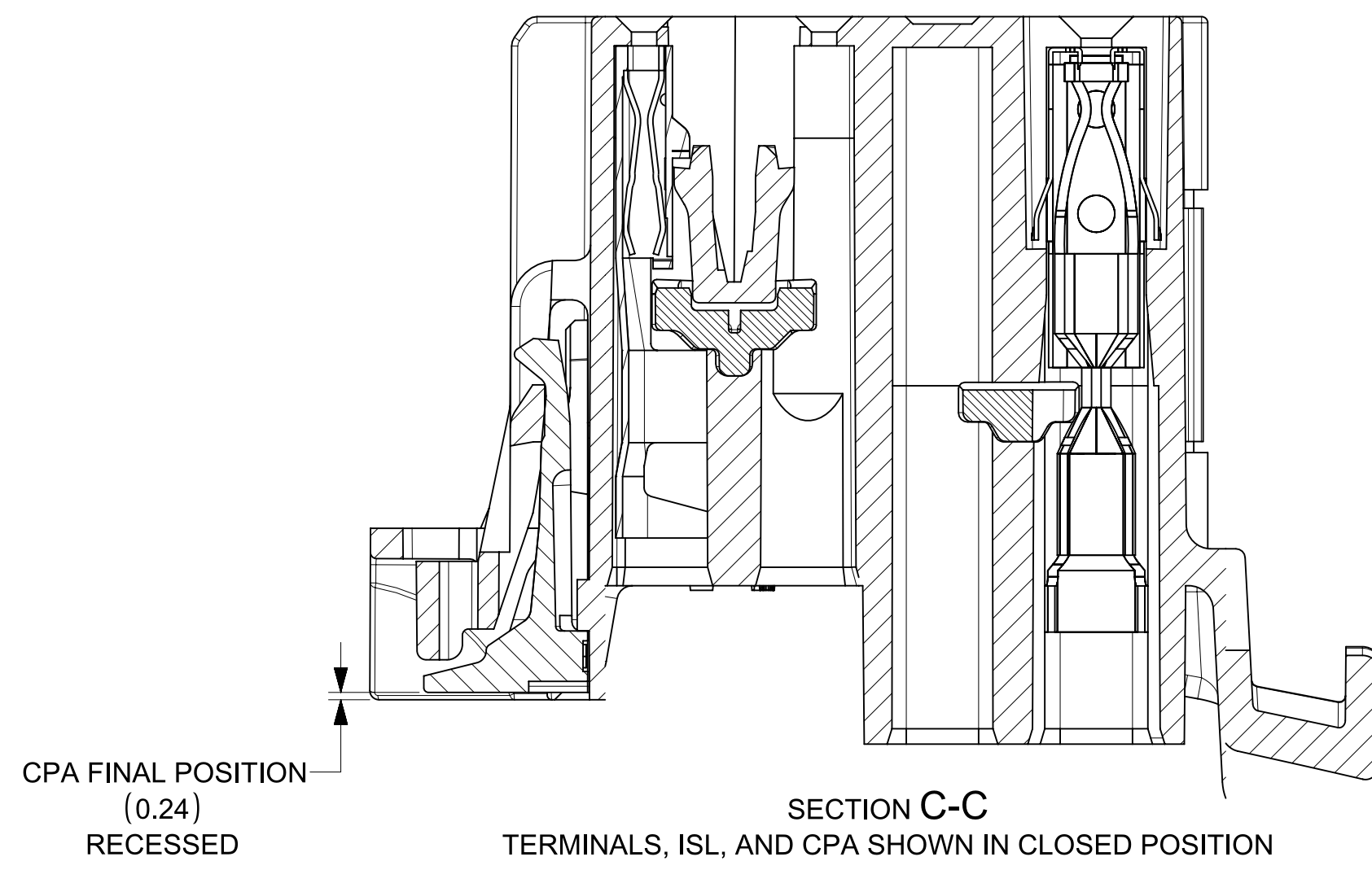
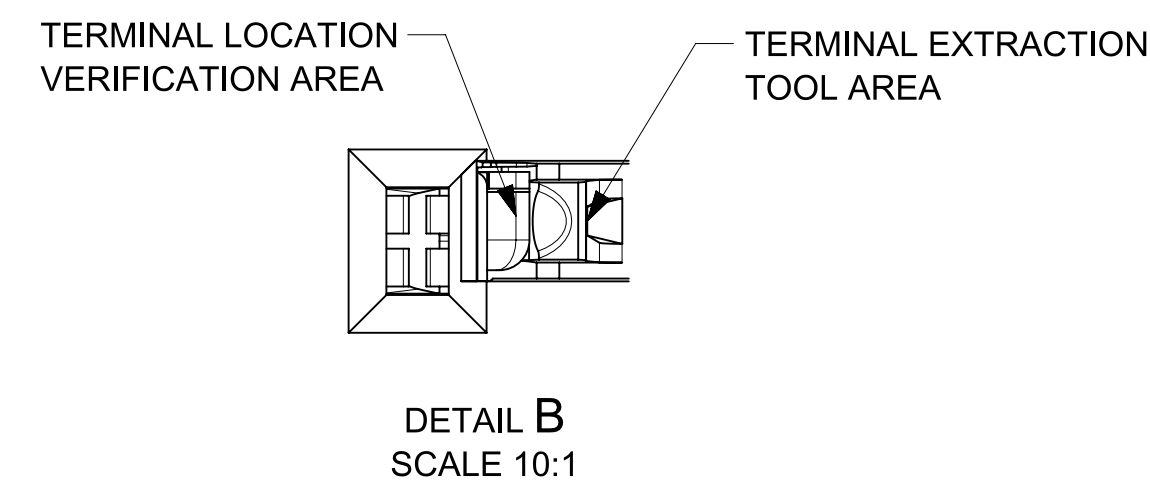
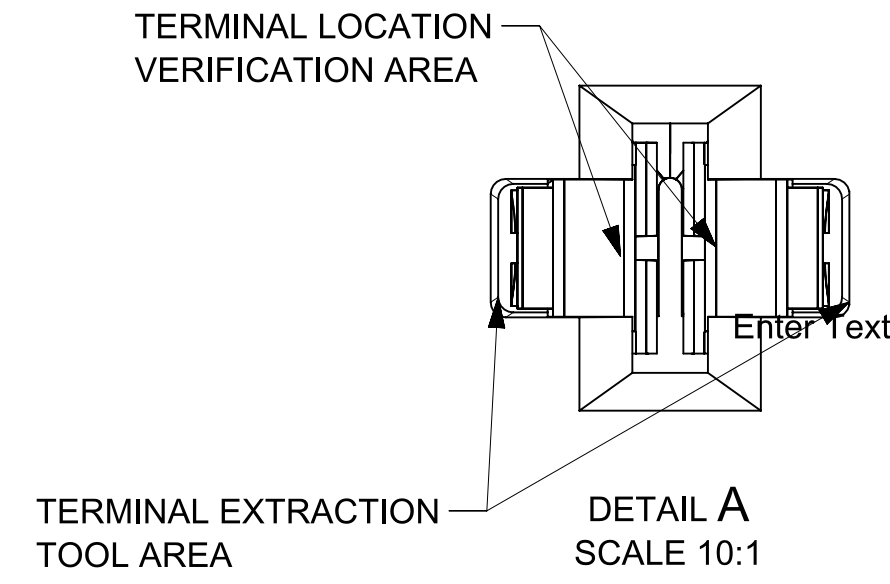
NOTES: VALID UNLESS OTHERWISE SPECIFIED

- GENERAL:
 - APPLICATION SPECIFICATION SEE: AS-160014-001
 - PRODUCT SPECIFICATION SEE: PS-160014-001
 - PACKAGING SPECIFICATION PER MOLEX DRAWING: PK-31302-266
 - PARTS MUST BE IN COMPLIANCE TO MOLEX CHEMICAL SUBSTANCES FOR PRODUCTS AND PACKAGING SPECIFICATION: ES-40000-5016
 - DATA MUST BE SUBMITTED UNDER THE MOLEX PART NUMBER TO IMDS (COMPANY ID#13255)
- DESIGN - MATERIALS:
 - SEE BOM TABLE
- DESIGN - GEOMETRY:
 - ALL GRAPHIC DATA IS BASIC (NO TOLERANCE) AND MUST BE TAKEN FROM THE DATA FILE AT ITS LATEST REVISION.
 - PRODUCT DESIGN MODEL NUMBER(S): SEE BOM TABLE
 - GEOMETRIC DIMENSIONS AND TOLERANCES PER ASME Y14.5M-2009
 - EDGES AND UNDIMENSIONED DETAILS PER ISO13715
 - CORNERS SHOWN AS SHARP TO BE R 0.2 MAX.
 - MARKED TEXT TO INCLUDE RECYCLING CODE, CAVITY ID, VENDOR IDENTIFICATION, AND CUSTOMER MATERIAL NUMBER.
 - LASER ETCHED DATE CODE
1ST THROUGH 2ND DIGIT = CALENDAR YEAR
3RD THROUGH 5TH DIGIT = "DAY #" OF YEAR
6TH THROUGH 7TH DIGIT = HOUR OF DAY
8TH THROUGH 9TH DIGIT = MINUTE OF HOUR
10TH THROUGH 11TH DIGIT = SECOND OF MINUTE
 - LASER ETCHED ASSEMBLY LINE
"X" DENOTES CAPACITY ASSEMBLY LINE SUCH AS "_2" OR MORE IN FUTURE
- DESIGN - MANUFACTURING:
 - VISUAL DEFECTS SHALL MEET COSMETIC STANDARD PS-45499-002 (Class B)

C	UPDATED DELPHI 1.2 TERMINAL PN IN BOM
B3	UPDATED LASER MARK TO INCLUDE NEW CAPACITY ASSEMBLY LINE
B2	UPDATED DELPHI 1.2 TERMINAL PINS
B1	UPDATED WIRE GAGE RANGE OF 1.20MM TERMINAL
B	UPDATED VIEWS SAP#: 10898772
A	NX RE-MASTERING SAP # 10816434
4	UAU2015-1899 SAP # 10698159 JCONDON 06/17/2015
3	UAU2015-1606 SAP # 10685685 JCONDON 04/23/2015
1	RELEASE FOR PROTOTYPE SAP # XXXXXXXX

PART NUMBER	STATUS	PLATING	SUPPLIER	WIRE GAGE (mm2)	TERMINAL FAMILY	WIRE SPECIFICATION
35072403	ACTIVE	TIN PLATING	DELPHI	0.35 - 0.5	TAXI TERM OCS 1.2	SAE/ J1128 THIN WALL INSULATION
35072404	ACTIVE			0.75 - 0.8		
35072405	ACTIVE			0.8 - 1.0		
35072406	OBSOLETE			1.25 - 1.5		
35457252	ACTIVE			1.25 - 1.5		
SMSA-A031T-M1.2	ACTIVE		JST	0.5 - 0.75	MSA 1.2mm TERMINAL	
SMSA-A041T-M1.2	ACTIVE		JST	1.0 - 1.5	MSA 1.2mm TERMINAL	
1-968851-1	ACTIVE		TE	1.0 - 2.5	AMP MCP 2.8	
1-968849-1	ACTIVE		TE	0.5 - 1.0	AMP MCP 2.8	
15457849	ACTIVE		DELPHI	1.5 - 2.5	CTS 2.8mm	
15457848	ACTIVE	DELPHI	0.5 - 1.0	CTS 2.8mm		

FUNCTIONAL SYMBOLS	THIS DRAWING CONTAINS INFORMATION THAT IS PROPRIETARY TO MOLEX ELECTRONIC TECHNOLOGIES, LLC AND SHOULD NOT BE USED WITHOUT WRITTEN PERMISSION		CURRENT REV DESC: SEE REVISION SHEET	
FA = 0	DIMENSION UNITS: mm	SCALE: 5:1		
FE = 0	GENERAL TOLERANCES (UNLESS SPECIFIED)		PHASE:	
FP = 0	ANGULAR TOL ± 3.0°		CO NO:	
DIVISIONAL SYMBOLS	4 PLACES ±		DRWN: Skyla Tang	2024-08-01
	3 PLACES ±		CHK'D: Yann Chen	2024-08-02
	2 PLACES ± 0.300		APPR: Ringo Hu	2024-08-06
	1 PLACE ± 0.30		INITIAL REVISION:	
	0 PLACES ± 0.30		DRWN: RFC_PLMIMP	
			APPR:	
DRAFT WHERE APPLICABLE MUST REMAIN WITHIN DIMENSIONS		THIRD ANGLE PROJECTION	DRAWING: D-SIZE	SERIES: 160026
		MATERIAL NUMBER: SD-160026-0001		DOC TYPE: PSD
		CUSTOMER: GENERAL MARKET		DOC PART: 000
		SHEET NUMBER: 1 OF 2		REVISION: C



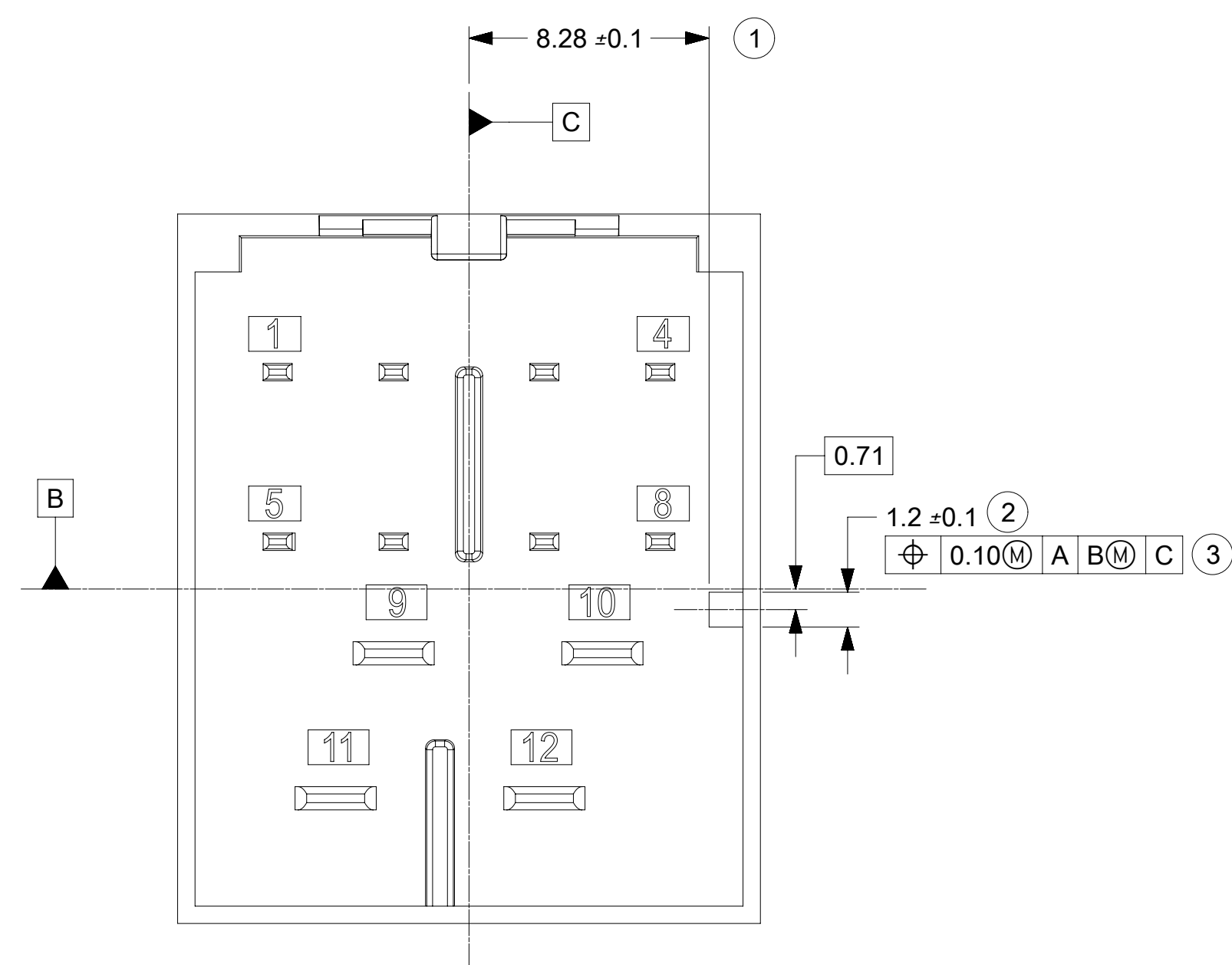
FUNCTIONAL SYMBOLS	THIS DRAWING CONTAINS INFORMATION THAT IS PROPRIETARY TO MOLEX ELECTRONIC TECHNOLOGIES, LLC AND SHOULD NOT BE USED WITHOUT WRITTEN PERMISSION		CURRENT REV DESC: SEE REVISION SHEET	
	DIMENSION UNITS	SCALE		
$F_A = 0$	mm	5:1		
GENERAL TOLERANCES (UNLESS SPECIFIED)				
	ANGULAR TOL	± 3.0°		
DIVISIONAL SYMBOLS	4 PLACES	±	PHASE:	
	3 PLACES	±	CO NO:	
	2 PLACES	± 0.300	DRWN: Skylar Tang 2024-08-01	
	1 PLACE	± 0.30	CHK'D: Yann Chen 2024-08-02	
0 PLACES	± 0.30	APPR: Ringo Hu 2024-08-06		
DRAFT WHERE APPLICABLE MUST REMAIN WITHIN DIMENSIONS		THIRD ANGLE PROJECTION	DRAWING	SERIES
			D-SIZE	160026
		MATERIAL NUMBER	CUSTOMER	SHEET NUMBER
		SD-160026-0001	GENERAL MARKET	2 OF 2

molex

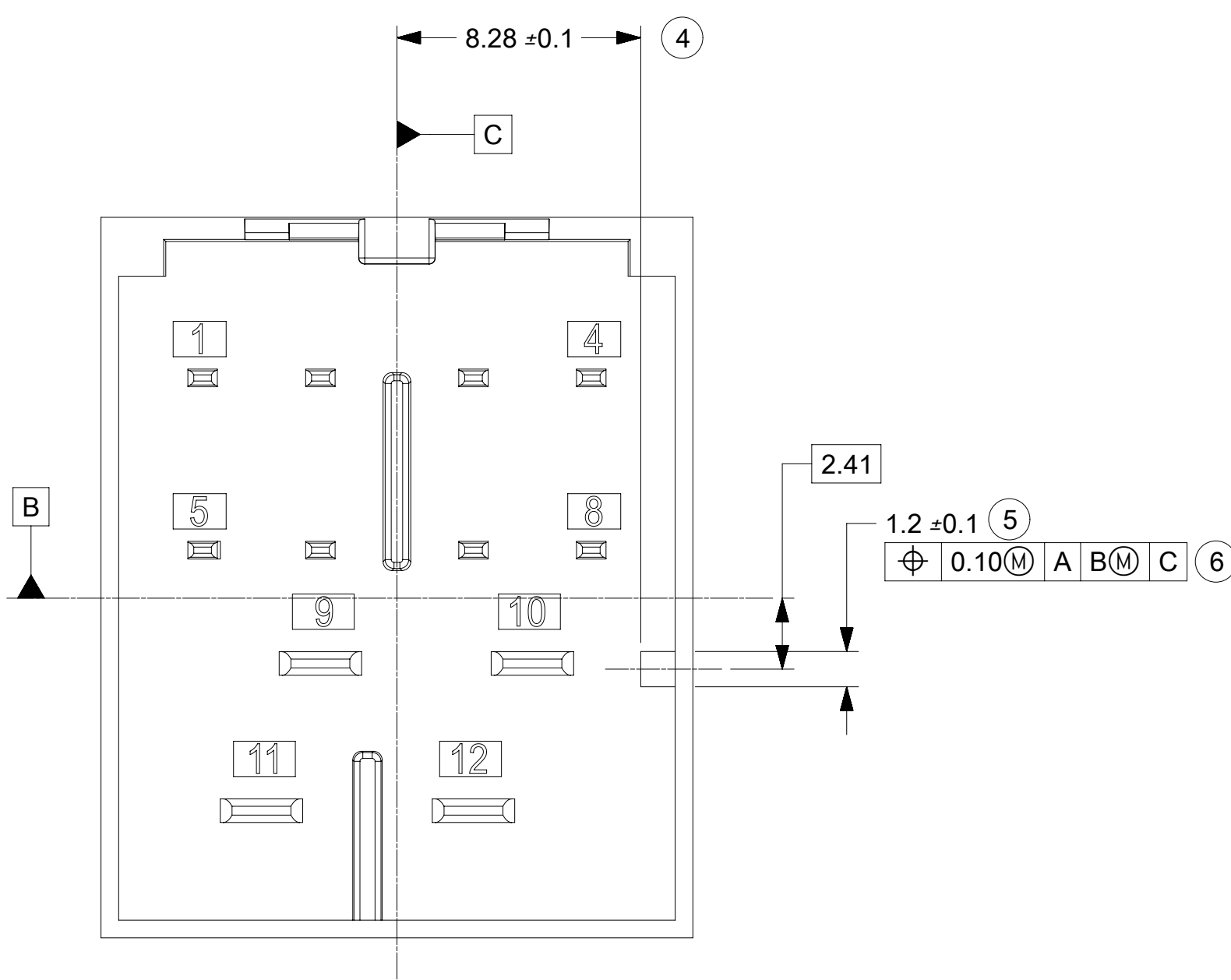
12WAY STAK50H HYBRID CONNECTOR ASSEMBLY

PRODUCT CUSTOMER DRAWING

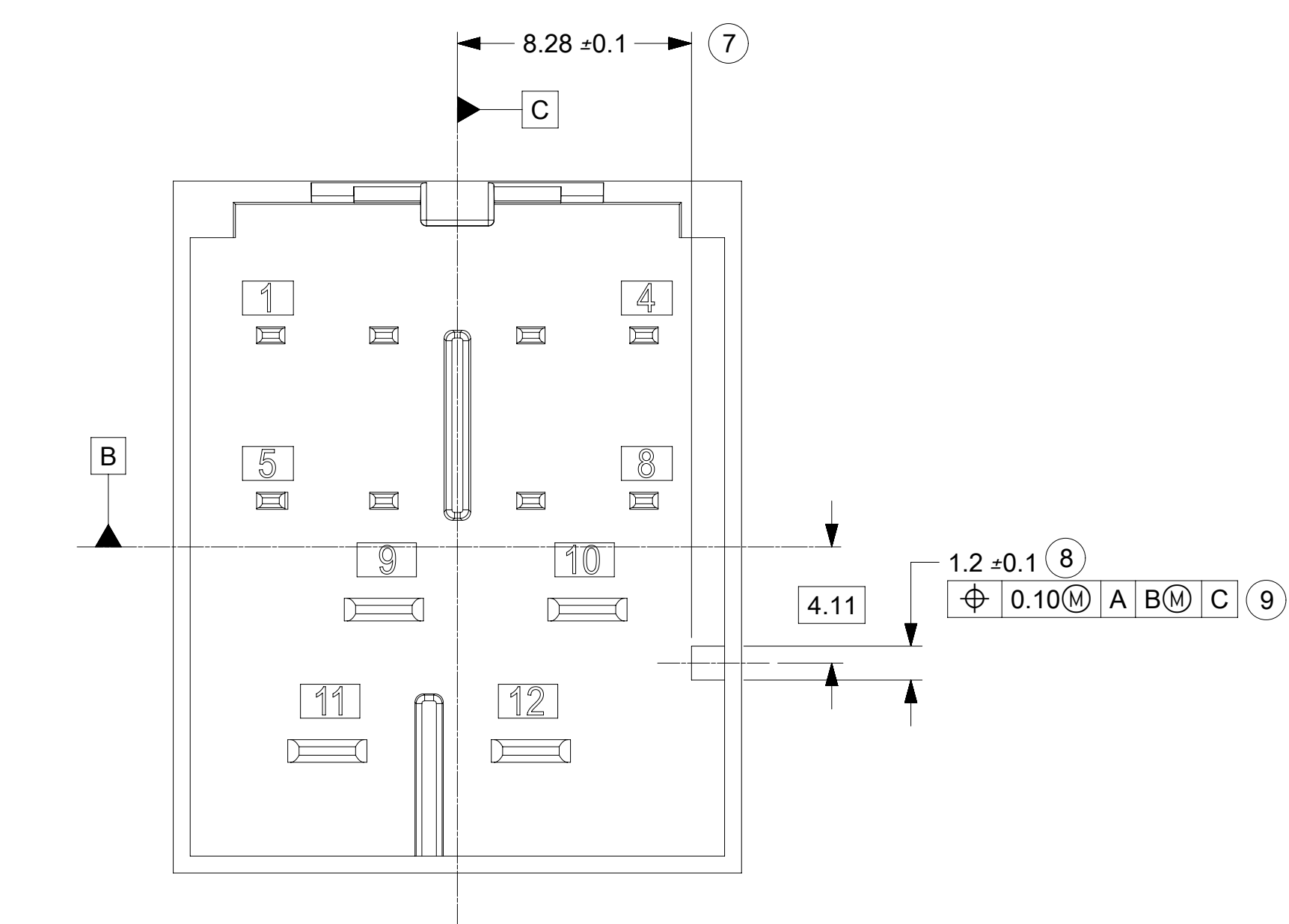
DOCUMENT NUMBER: SD-160026-0001 | DOC TYPE: PSD | DOC PART: 000 | REVISION: C



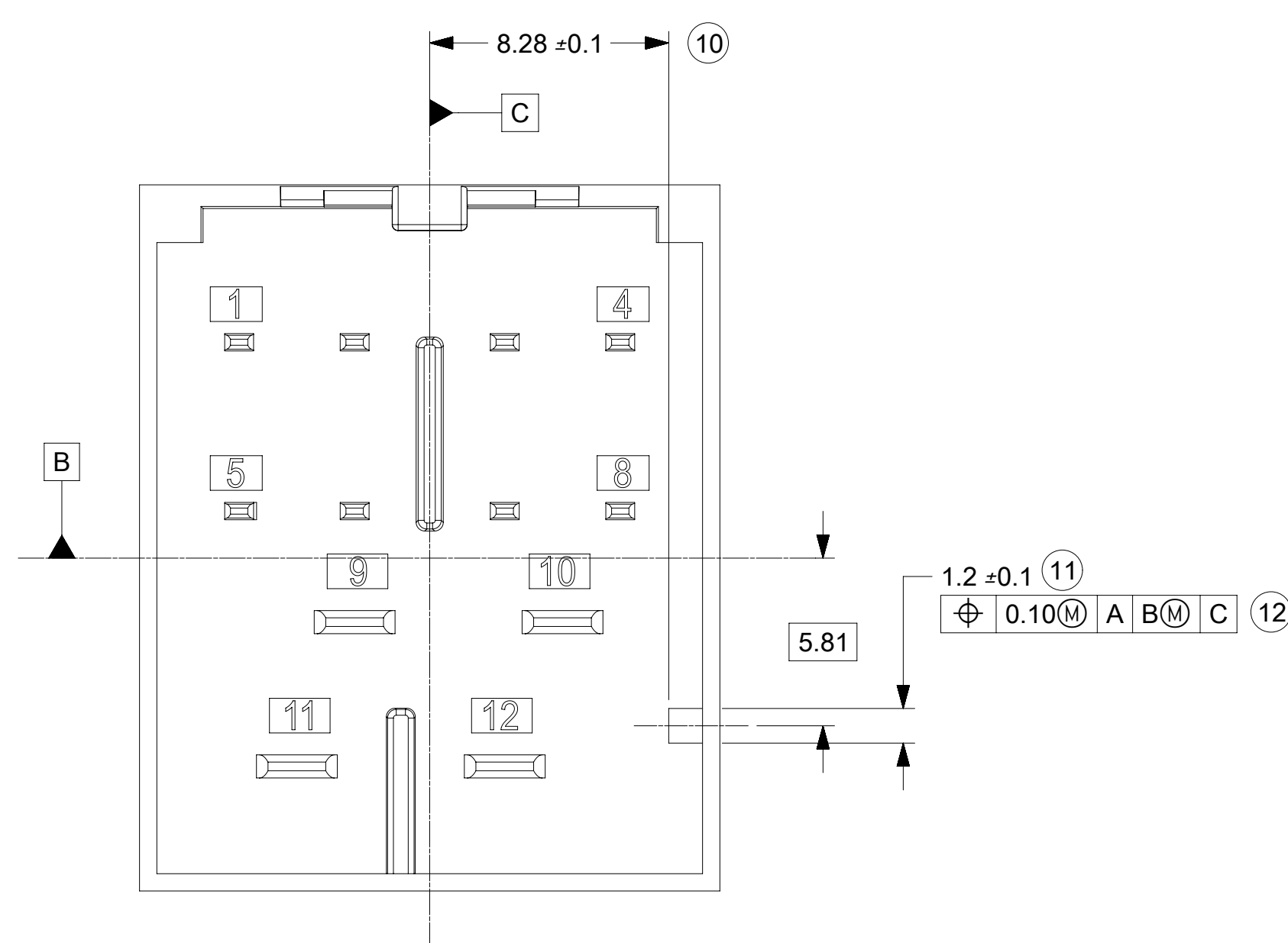
INTERFACE KEY #1
MATING CONNECTOR : BLACK



INTERFACE KEY #2
MATING CONNECTOR : LT GREEN B



INTERFACE KEY #3
MATING CONNECTOR : LT PURPLE



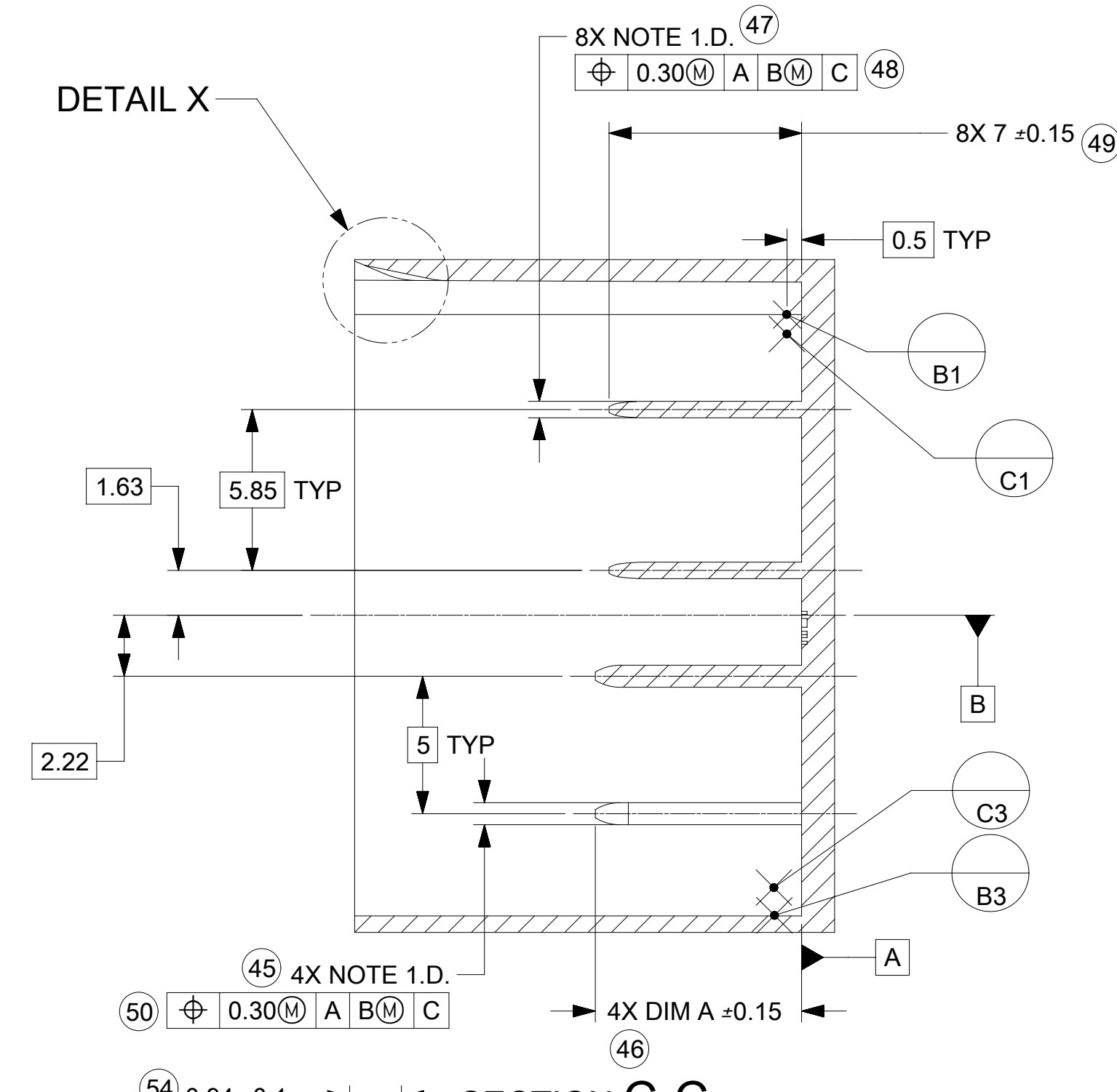
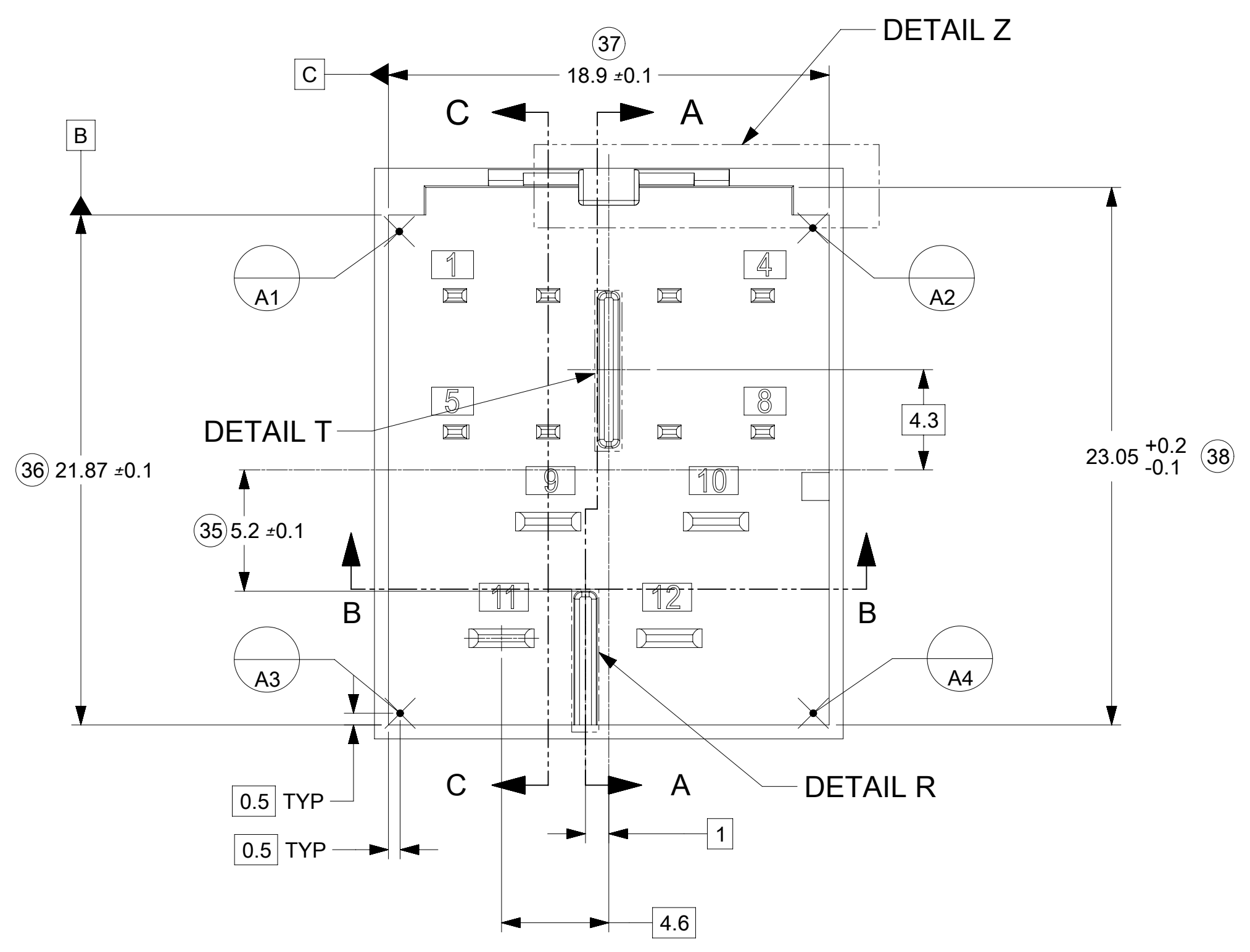
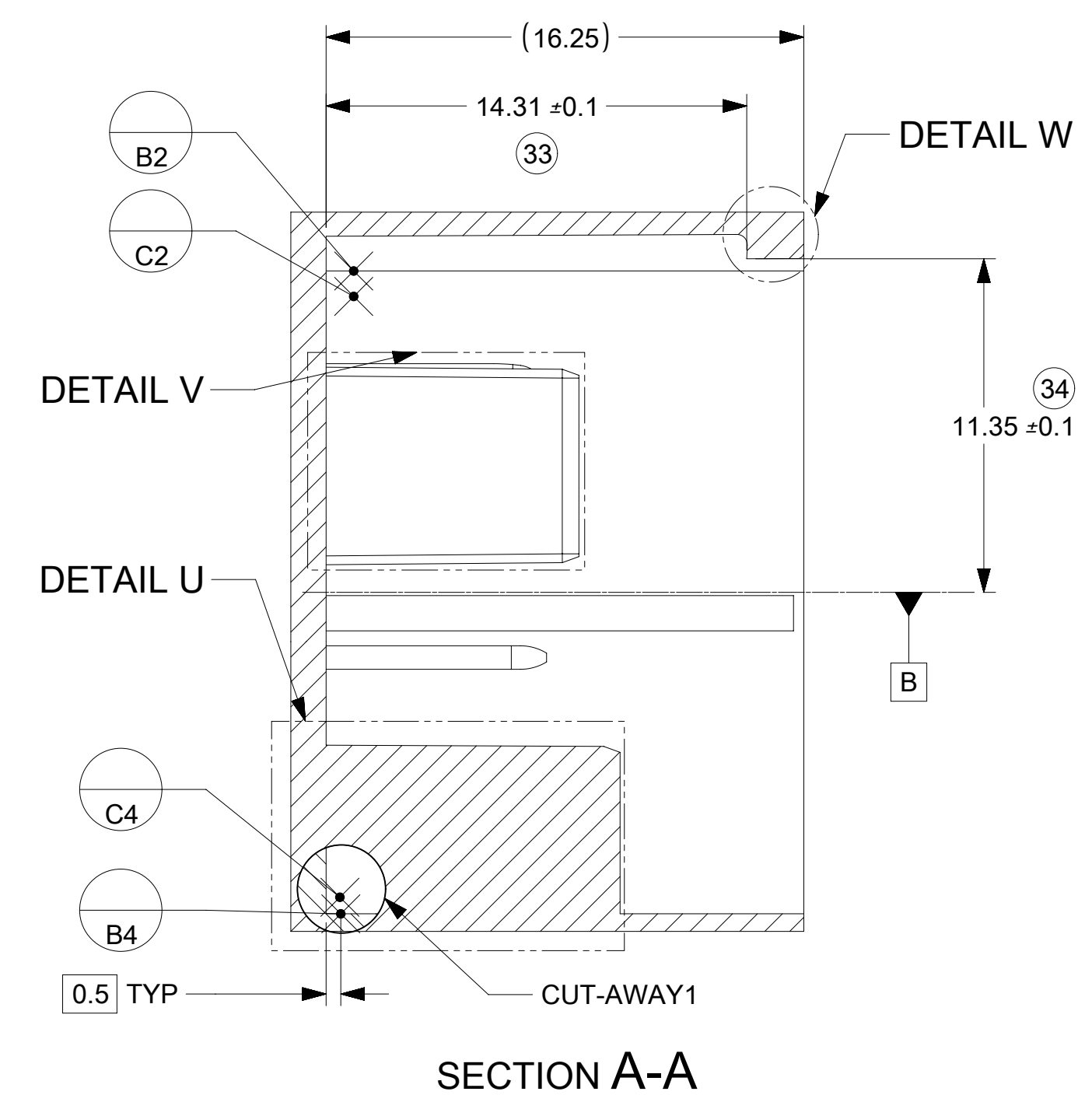
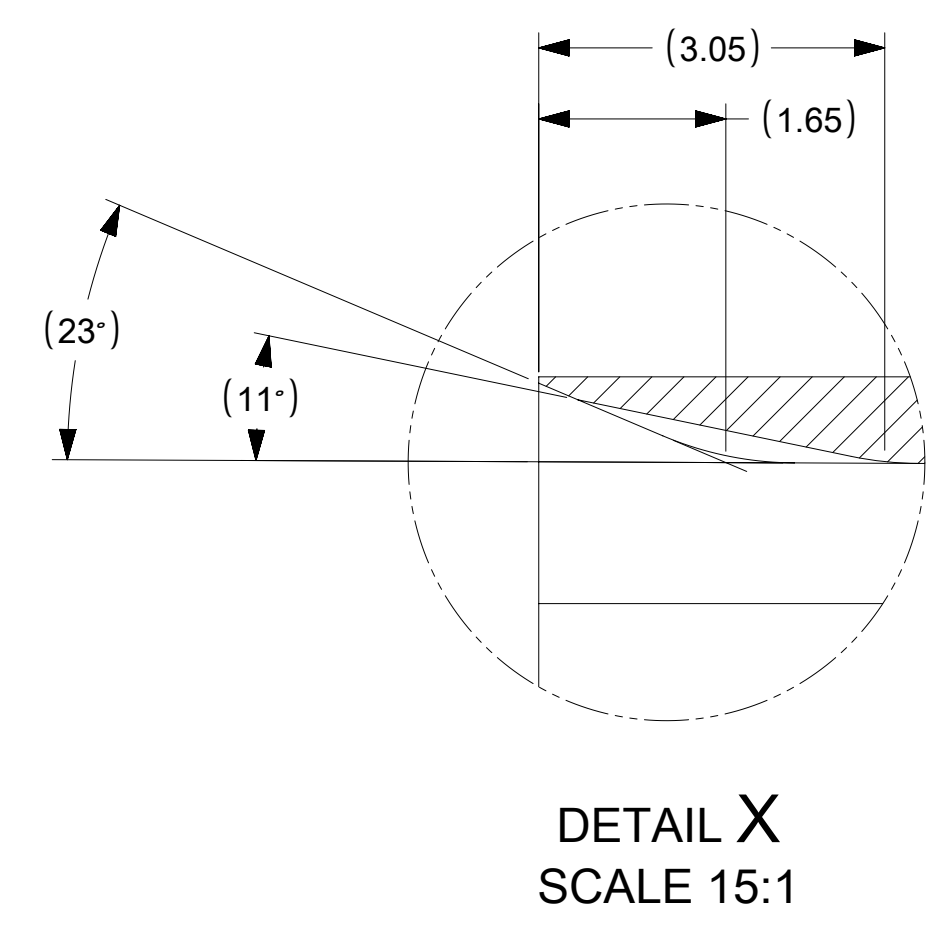
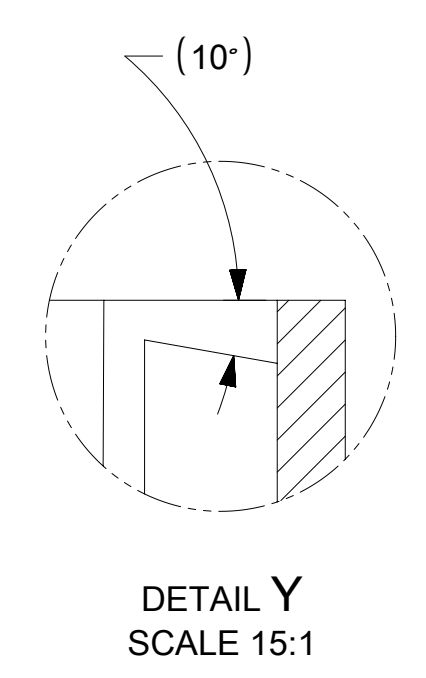
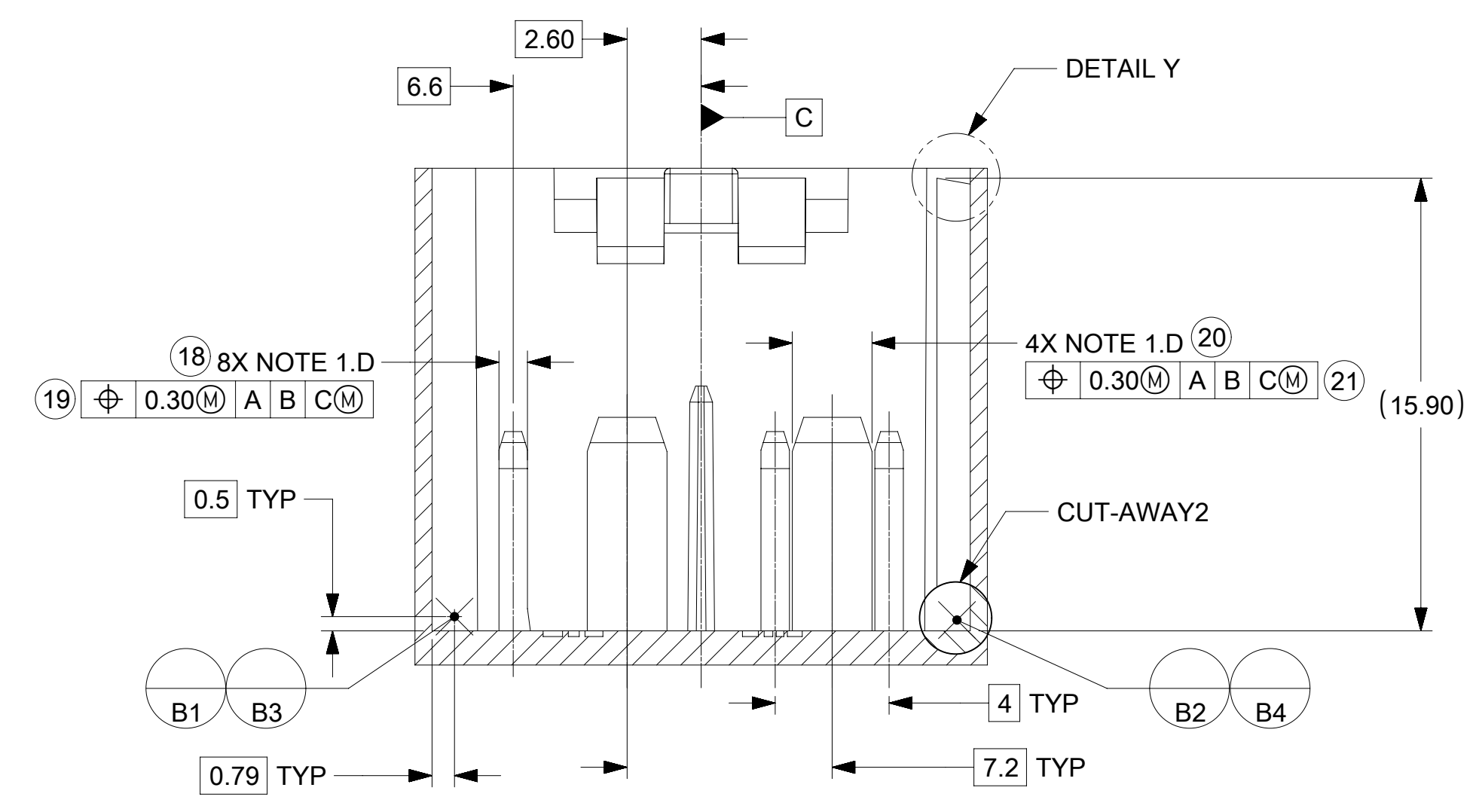
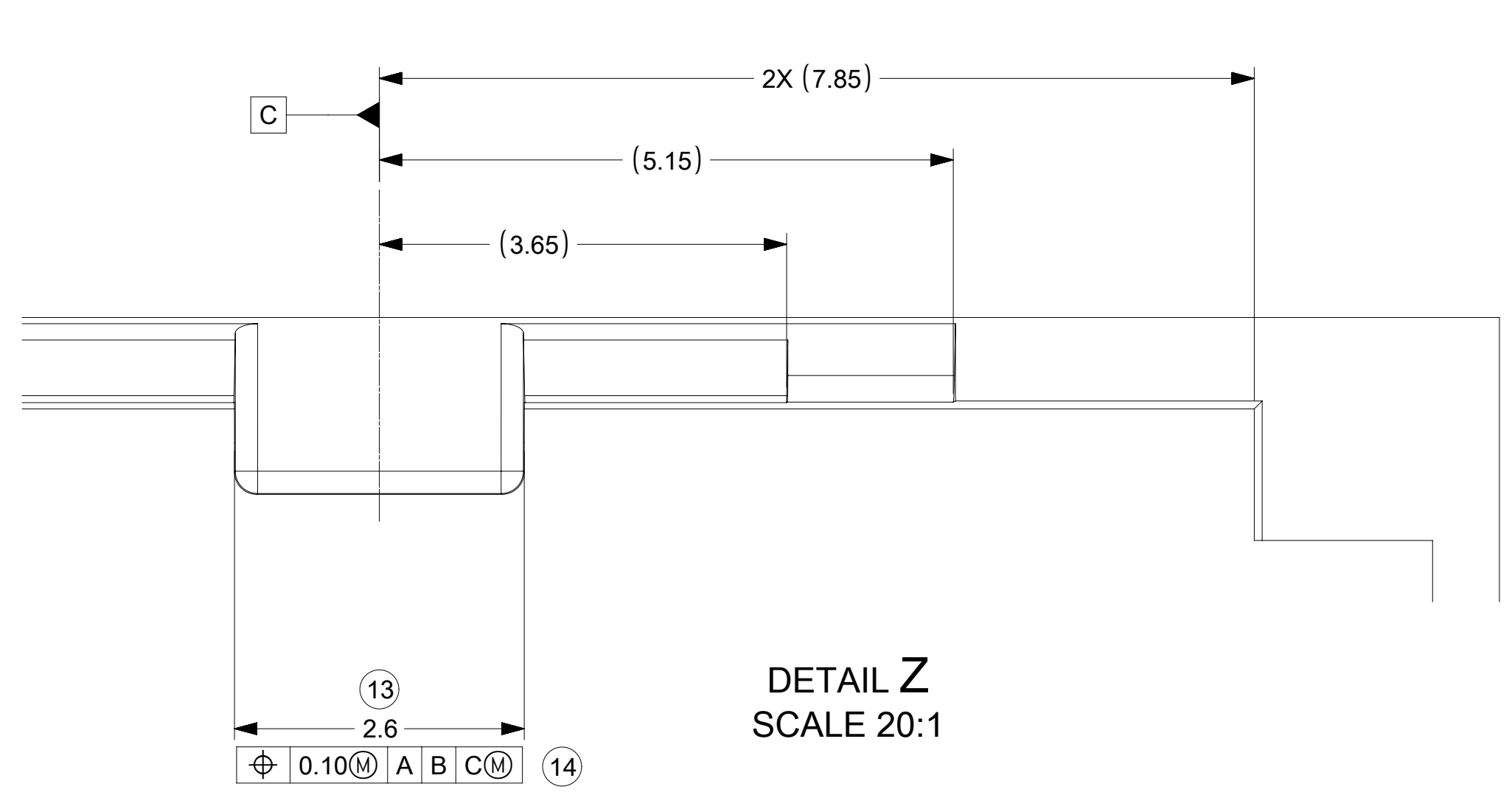
INTERFACE KEY #4
MATING CONNECTOR : LT GRAY

NOTES: VALID UNLESS OTHERWISE SPECIFIED

1. DESIGN - MATERIALS:
 - a. RESIN MATERIAL : PBT+GF30 OR SPS+GF30 OR EQUIVALENT
 - b. PIN/BLADE MATERIAL : ACCORDING TO USCAR DRAWING EWCAP-001 NOTE B2
 - c. PLATING: ACCORDING TO USCAR DRAWING EWCAP-001 TIN REFLOW WITH UNDERPLATE
 - d. PIN TIPS ACCORDING TO USCAR DRAWING EWCAP-001 (120-T002 & 280-T001)
 - e. DEVIATION TO EWCAP-001 ACCEPTABLE IF PERFORMANCE (ELECTRICAL/MECHANICAL) IS SHOWN TO BE EQUAL OR BETTER AS REQUIRED BY VALIDATION TESTING.
 1. DEVIATION TO TIN PLATING THICKNESS AS NECESSARY TO MEET MATING FORCE AND ALL VALIDATION REQUIREMENTS
2. DRAWING - GEOMETRY:
 - a. ALL GRAPHIC DATA IS BASIC (NO TOLERANCE) AND MUST BE TAKEN FROM THE DATA FILE AT ITS LATEST REVISION.
 - b. GEOMETRIC DIMENSIONS AND TOLERANCES PER ASME Y14.5M-2009.
 - c. GENERAL TOLERANCES:
 - LINEAR : PER DIN 16901 LINEAR CODE B FOR PRECISION ENGINEERING
 - ANGULAR : ±3°
 - d. EDGES AND UNDIMENSIONED DETAILS PER ISO13715
 - e. CORNERS SHOW AS SHARP TO BE R 0.2 MAX.
 - f. LETTERS SHALL BE 0.15MAX RAISED IN 0.25 MAX RECESSED PAD. THIS INCLUDES RECYCLING CODE, CAVITY ID, VENDOR IDENTIFICATION, AND CUSTOMER MATERIAL NUMBER. (for small parts : LETTERING SHALL BE 0.10 MAX RAISED IN 0.15 MAX RECESS PAD)
3. DESIGN - MANUFACTURING:
 - a. DRAFT TO BE WITHIN TOLERANCE.

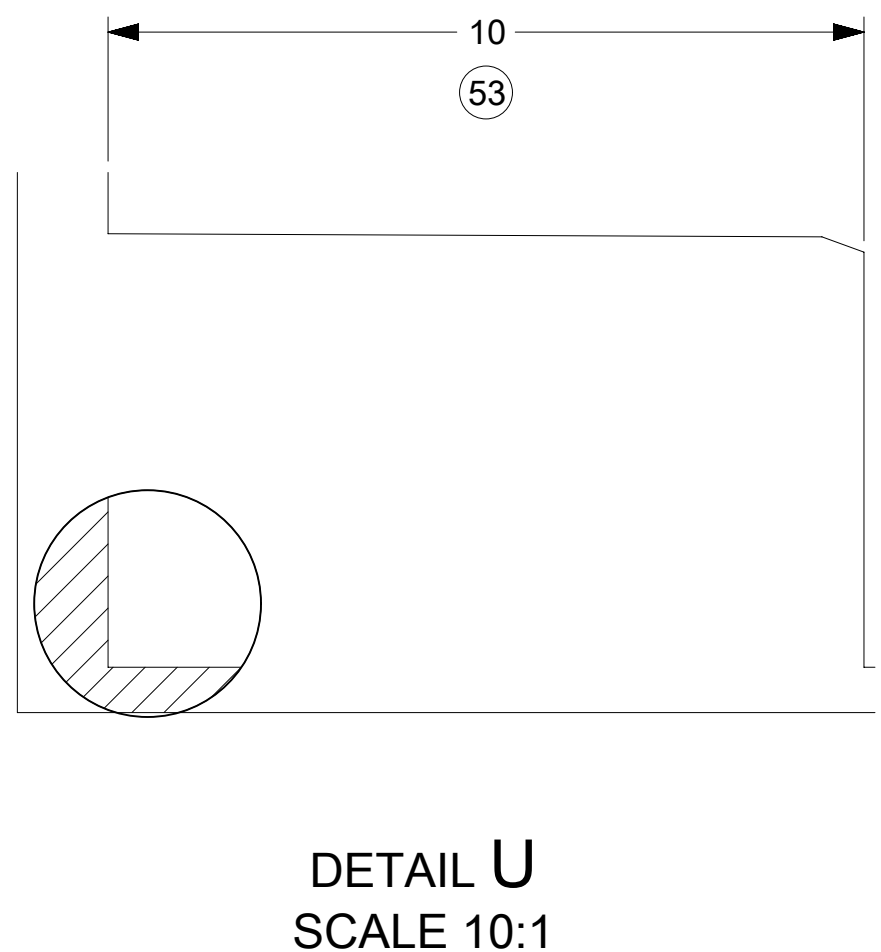
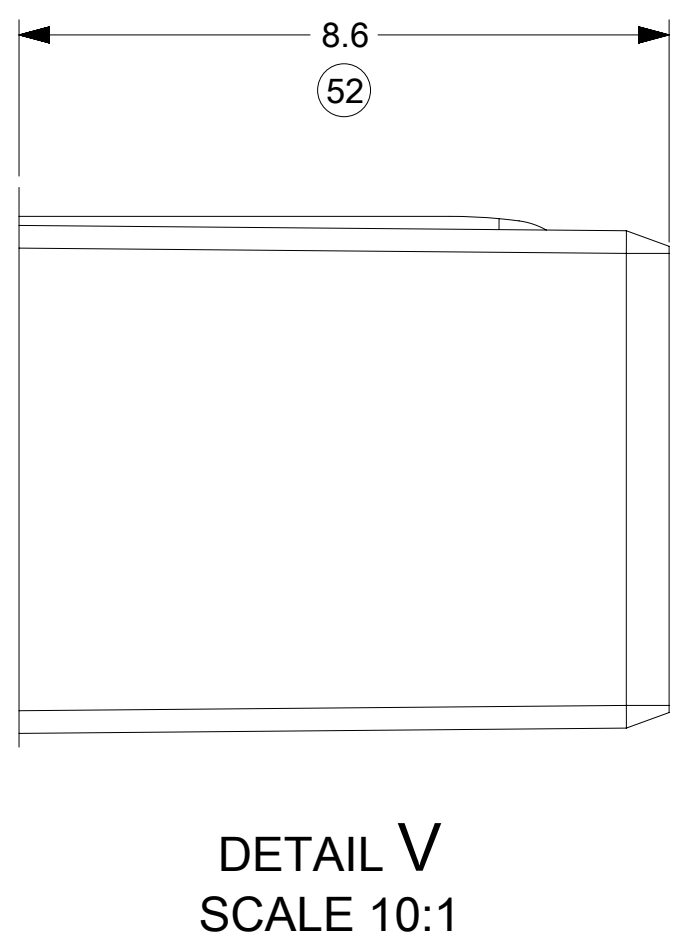
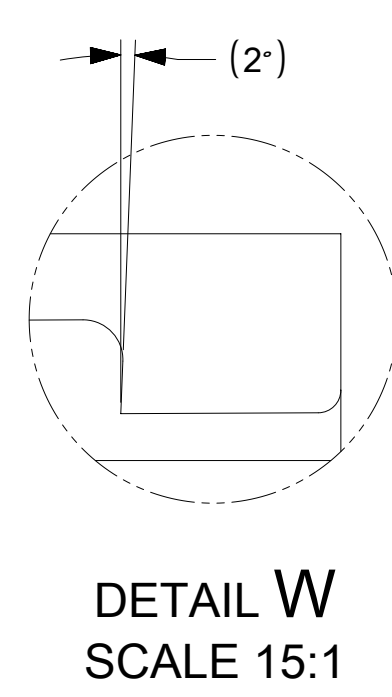
C	ADDED 2.8MM BLADE LENGTH VARIANT FOR MATE FORCE REQUIREMENT ADDED NOTE 1.e.1 CHANGE RECORD: 626144 JPATE 10/22/2019
B1	ADDED BALLOONS JCONDON 07/31/2018
B	REMOVED 0.2MM FROM CONNECTOR LOCK TAB FEATURE
A3	DRAWING CLEANUP
A2	ADDED CIRCUIT IDs
A1	ADDED NOTE 1e, MKOWALSKY 7/7/2017
7	GEOMETRY UPDATED, SPEMMARAJU 02/18/2016
6	UAU2015-1446 , SAP#10681629 , JCONDON 03/25/2015

SYMBOLS	THIS DRAWING CONTAINS INFORMATION THAT IS PROPRIETARY TO MOLEX ELECTRONIC TECHNOLOGIES, LLC AND SHOULD NOT BE USED WITHOUT WRITTEN PERMISSION	
	DIMENSION UNITS	SCALE
▽ = 0	mm	CURRENT REV DESC: ADDED 2.8MM BLADE LENGTH VARIANT FOR MATE FORCE REQUIREMENT ADDED NOTE 1.E.1
▽ = 0	GENERAL TOLERANCES (UNLESS SPECIFIED)	
▽ = 0	ANGULAR TOL ± °	EC NO: 626144
▽ = 0	4 PLACES ±	DRWN: JCONDON 2019/10/08
▽ = 0	3 PLACES ±	CHK'D: DLANGOLF 2019/10/22
▽ = 0	2 PLACES ±	APPR: JCONDON 2019/10/23
▽ = 0	1 PLACE ±	INITIAL REVISION:
▽ = 0	0 PLACES ±	DRWN: SPEMMARAJU 2015/10/27
▽ = 0	DRAFT WHERE APPLICABLE MUST REMAIN WITHIN DIMENSIONS	APPR: KDEKOSKI 2016/03/24
▽ = 0	THIRD ANGLE PROJECTION	DRAWING SERIES
▽ = 0	D-SIZE	160026
DOCUMENT NUMBER		DOC TYPE DOC PART REVISION
SD-160026-002		PSD 000 C
MATERIAL NUMBER CUSTOMER		SHEET NUMBER
GENERAL MARKET		1 OF 3



CONSTRUCTION	DIM. A (mm)	STATUS
OPTION A	7.5	REVISION B
OPTION B	6.5	REVISION C

*OPTION B IS THE PREFERRED CONSTRUCTION FOR ALL NEW HEADERS

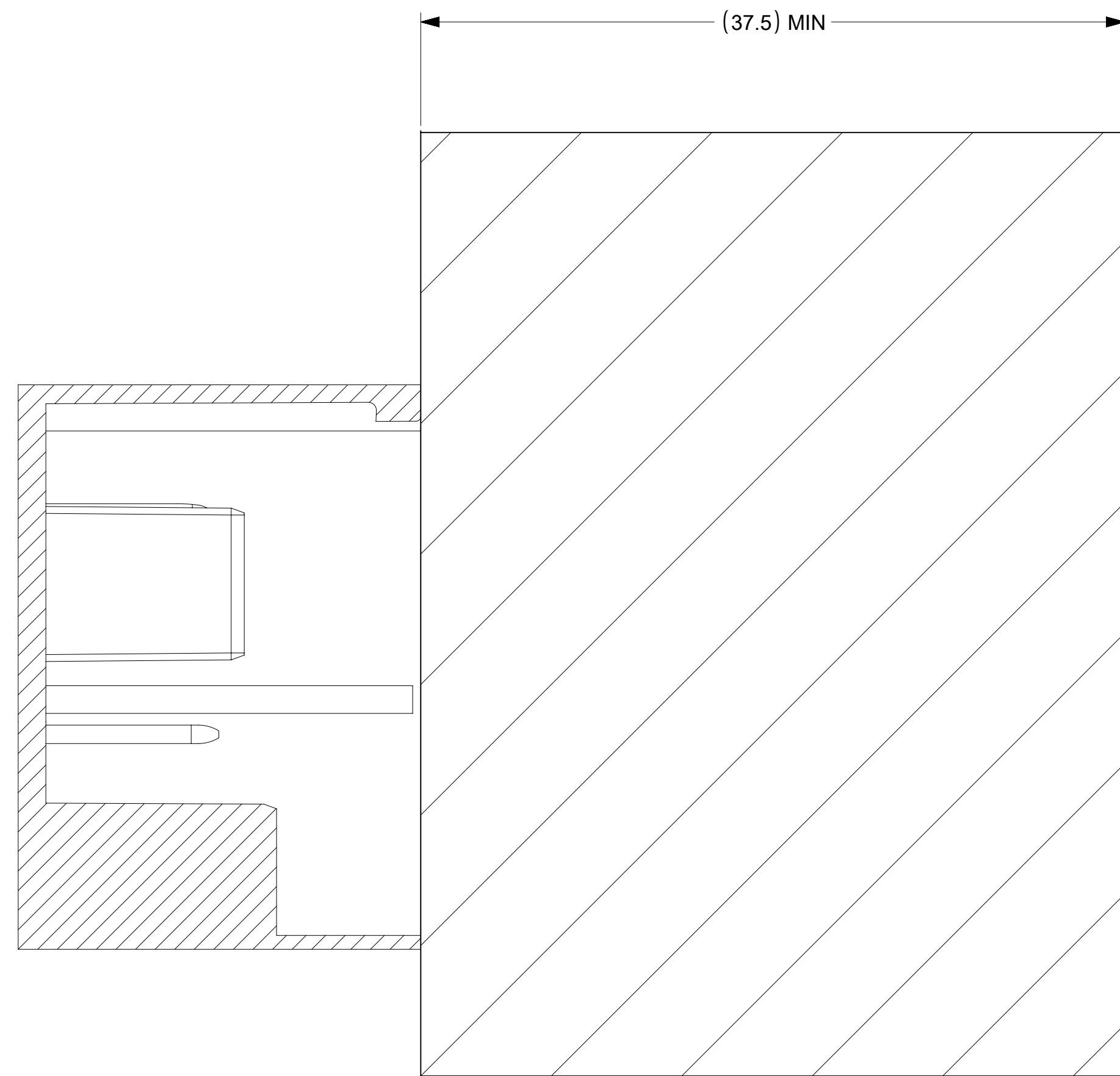


DETAIL T
SCALE 10:1

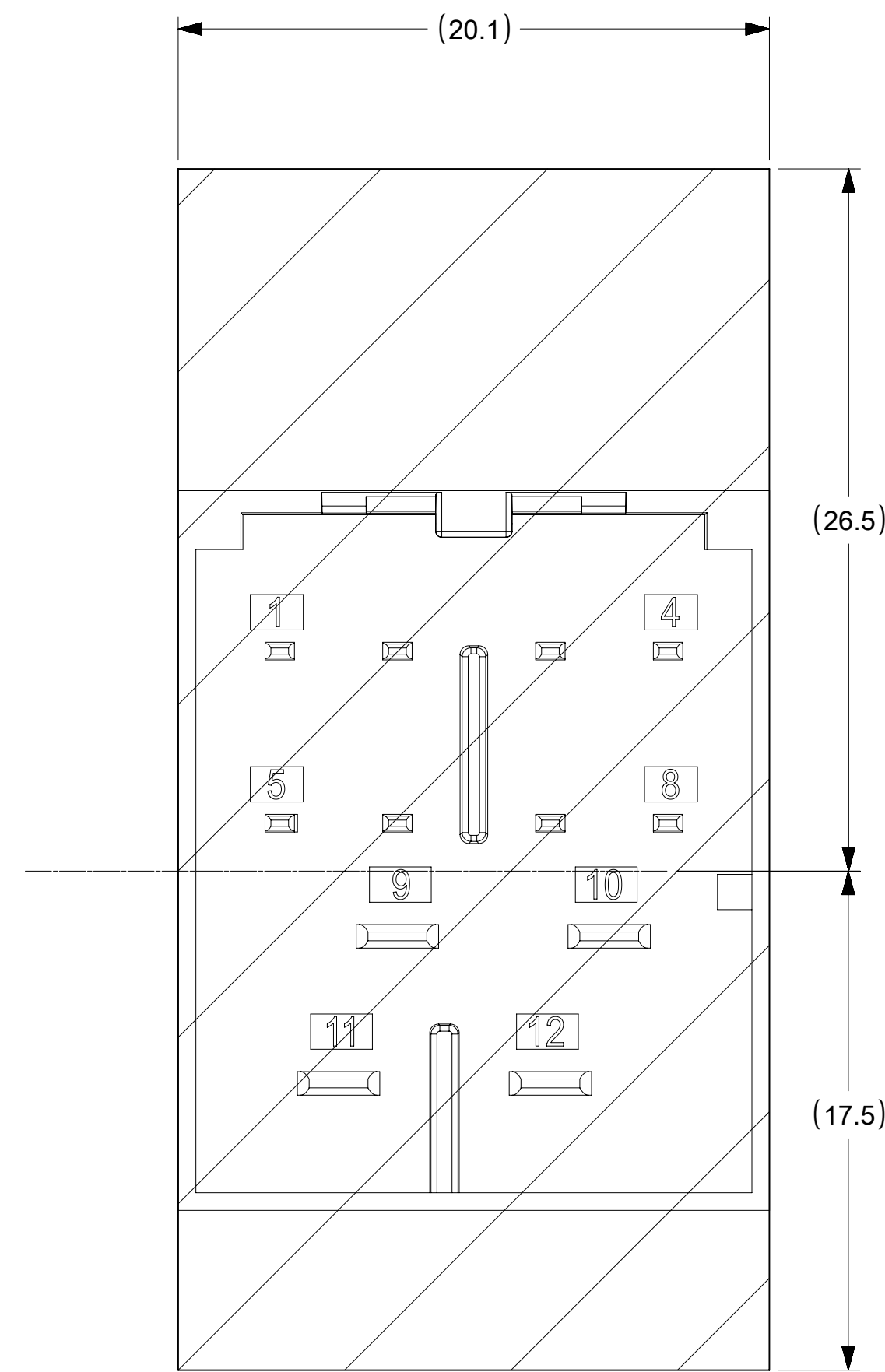
DETAIL R
SCALE 10:1

SYMBOLS	THIS DRAWING CONTAINS INFORMATION THAT IS PROPRIETARY TO MOLEX ELECTRONIC TECHNOLOGIES, LLC AND SHOULD NOT BE USED WITHOUT WRITTEN PERMISSION	CURRENT REV DESC: ADDED 2.8MM BLADE LENGTH VARIANT FOR MATE FORCE REQUIREMENT ADDED NOTE 1.E.1				
	DIMENSION UNITS					
▽ = 0	mm	GENERAL TOLERANCES (UNLESS SPECIFIED)	CHK'D: DLANGOLF	2019/10/22	12WAY STAK50H INTERFACE DRAWING	
▽ = 0	ANGULAR TOL ±	SEE NOTES	APPR: JCONDON	2019/10/23	PRODUCT CUSTOMER DRAWING	
▽ = 0	4 PLACES		INITIAL REVISION:	DOCUMENT NUMBER		
▽ = 0	3 PLACES	DRWN: SPEMMARAJU	2015/10/27	SD-160026-002	PSD	000
▽ = 0	2 PLACES	APPR: KDEKOSKI	2016/03/24	DOC TYPE		DOC PART
▽ = 0	1 PLACE	THIRD ANGLE PROJECTION		DRAWING	SERIES	REVISION
▽ = 0	0 PLACES	DRAFT WHERE APPLICABLE MUST REMAIN WITHIN DIMENSIONS		D-DRAWING	160026	C
▽ = 0				MATERIAL NUMBER	CUSTOMER	SHEET NUMBER
				GENERAL MARKET		2 OF 3

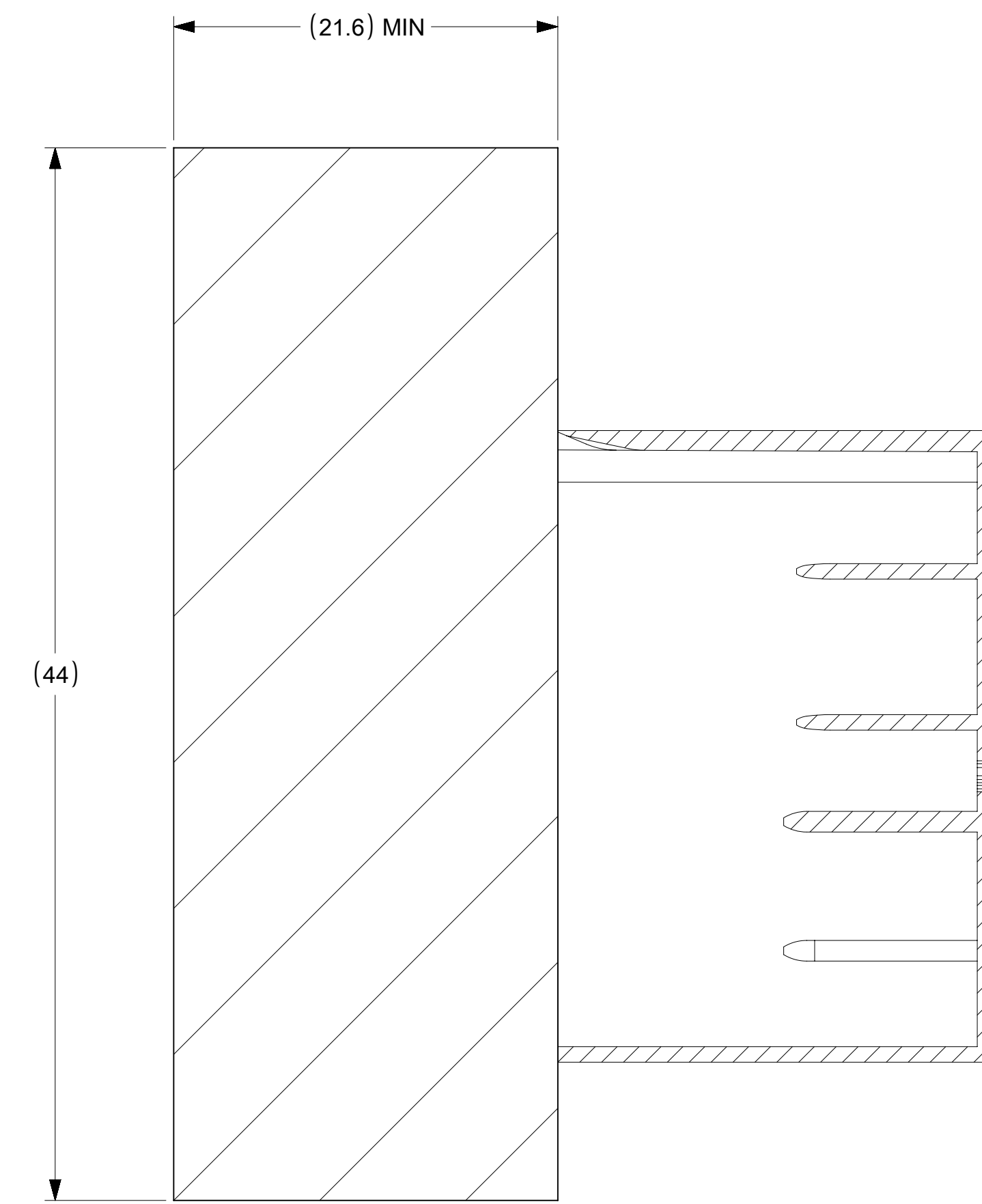
PACKAGE SPACE
FOR UNMATED
CONNECTOR



PACKAGE SPACE
FOR CONNECTOR



PACKAGE SPACE
FOR MATED
CONNECTOR
WITH COVER



SYMBOLS	THIS DRAWING CONTAINS INFORMATION THAT IS PROPRIETARY TO MOLEX ELECTRONIC TECHNOLOGIES, LLC AND SHOULD NOT BE USED WITHOUT WRITTEN PERMISSION					
	DIMENSION UNITS	SCALE				DOCUMENT NUMBER
▽ = 0	mm		CURRENT REV DESC: ADDED 2.8MM BLADE LENGTH VARIANT FOR MATE FORCE REQUIREMENT ADDED NOTE 1.E.1			12WAY STAK50H INTERFACE DRAWING
▽ = 0	GENERAL TOLERANCES (UNLESS SPECIFIED)		EC NO: 626144			
▽ = 0	ANGULAR TOL ±		DRWN: JCONDON 2019/10/08			PRODUCT CUSTOMER DRAWING
▽ = 0	4 PLACES		CHK'D: DLANGOLF 2019/10/22			
▽ = 0	3 PLACES		APPR: JCONDON 2019/10/23			INITIAL REVISION: DRWN: SPEMMARAJU 2015/10/27 APPR: KDEKOSKI 2016/03/24
▽ = 0	2 PLACES		SD-160026-002			
▽ = 0	1 PLACE		PSD			000 C
▽ = 0	0 PLACES		GENERAL MARKET			
⊠ = 0	DRAFT WHERE APPLICABLE MUST REMAIN WITHIN DIMENSIONS		THIRD ANGLE PROJECTION	DRAWING	SERIES	SHEET NUMBER
■ = 0				D-SIZE	160026	3 OF 3