

# "High Frequency Ceramic Solutions"

**2.45 GHz Antenna**

**P/N 2450AT18D0100**

Detail Specification: 9/28/2012

Page 1 of 3

## General Specifications

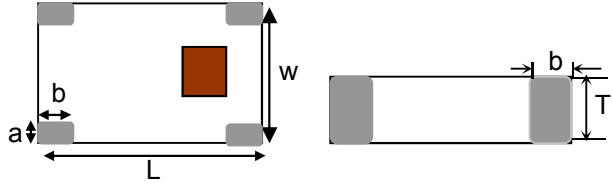
<b>Part Number</b>	2450AT18D0100	<b>Input Power</b>	2W max.
<b>Frequency (MHz)</b>	2400 - 2500	<b>Impedance</b>	50 $\Omega$
<b>Peak Gain</b>	1.5 dBi typ. (XZ-total)	<b>Reel Quantity</b>	3,000
<b>Average Gain</b>	-1.0 dBi typ. (XZ-total)	<b>Recommended Storage Conditions</b>	+5 ~ +35 °C, Humidity 45~75%RH, 12 mos. Max
<b>Return Loss</b>	6.0 dB min.		
<b>Operating Temperature</b>	-40 to +85°C		

## Part Number Explanation

<b>P/N Suffix</b>	<b>Packing Style</b>	Bulk	Suffix = S	eg. 2450AT18D0100S
		T & R	Suffix = E	eg. 2450AT18D0100E
	<b>Termination style</b>	100% Tin	Suffix = None	eg. 2450AT18D0100 (E or S)
	<b>EVB p/n</b>	2450AT18D0100-EB1SMA		

## Mechanical Dimensions

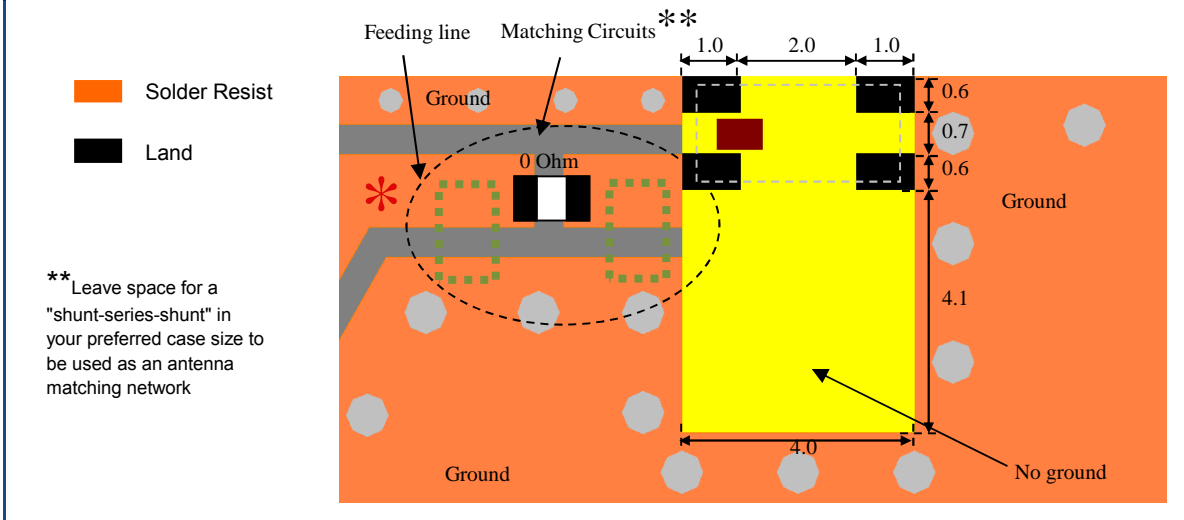
	In	mm
<b>L</b>	0.126 $\pm$ 0.008	3.20 $\pm$ 0.20
<b>W</b>	0.063 $\pm$ 0.008	1.60 $\pm$ 0.20
<b>T</b>	0.047 $\pm$ 0.008	1.20 $\pm$ 0.20
<b>a</b>	0.012 $\pm$ .004/-0.008	0.30 $\pm$ 0.1/-0.2
<b>b</b>	0.020 $\pm$ 0.008	0.50 $\pm$ 0.20



## Mounting Considerations

Mount these devices with red mark facing up.

\*Line width should be designed to provide 50  $\Omega$  impedance matching characteristics.



[www.johansontechnology.com](http://www.johansontechnology.com)

4001 Calle Tecate • Camarillo, CA 93012 • TEL 805.389.1166 FAX 805.389.1821

2012 Johanson Technology, Inc. All Rights Reserved

# "High Frequency Ceramic Solutions"

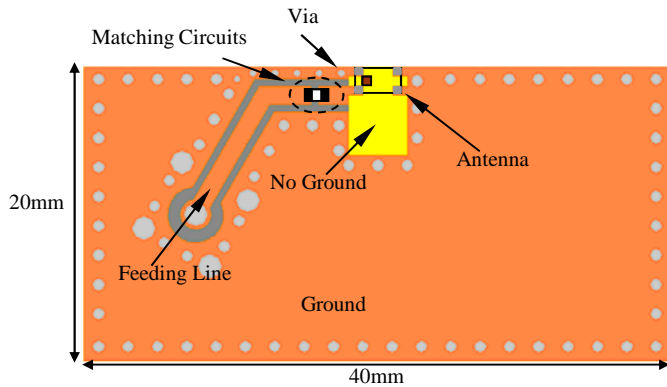
## 2.45 GHz Antenna

Detail Specification: 04/04/12

P/N 2450AT18D0100

Page 2 of 3

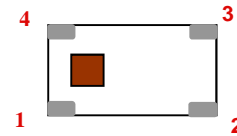
### Typical Electrical Performance (T=25°C)



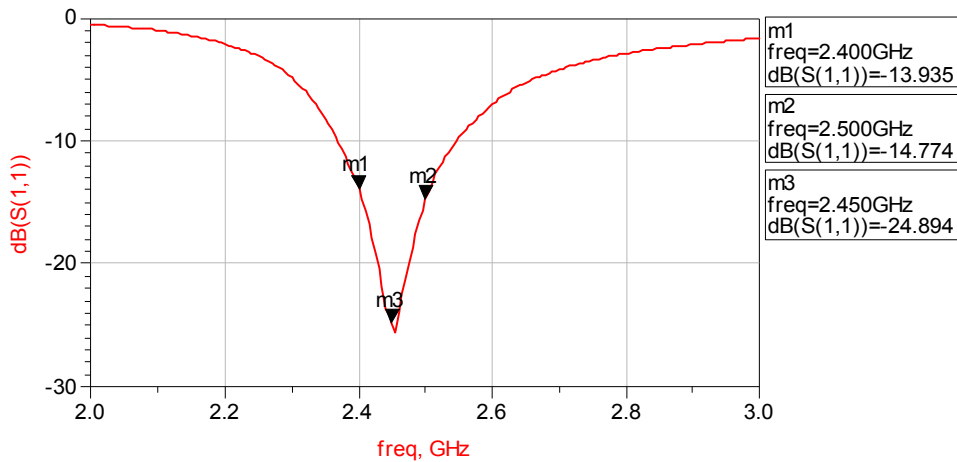
Orderable EVB p/n (comes with 1 female SMA connector mounted on the opposite side):

2450AT18D0100-EB1SMA

No.	Function
1	Feeding Point
2	GND
3	GND
4	GND



### Typ Return Loss



Johanson Technology, Inc. reserves the right to make design changes without notice. Please confirm the specifications and delivery conditions when placing your order. All sales are subject to Johanson Technology, Inc. terms and conditions.



[www.johansontechnology.com](http://www.johansontechnology.com)

4001 Calle Tecate • Camarillo, CA 93012 • TEL 805.389.1166 FAX 805.389.1821

2012 Johanson Technology, Inc. All Rights Reserved

# "High Frequency Ceramic Solutions"

**2.45 GHz Antenna**

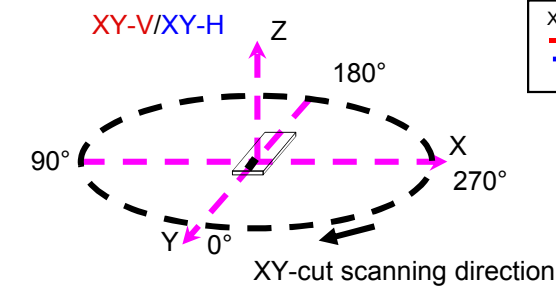
Detail Specification: 9/28/2012

**P/N 2450AT18D0100**

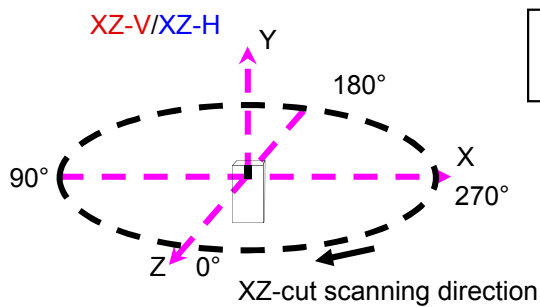
Page 3 of 3

## Typical Electrical Performance (T=25°C)

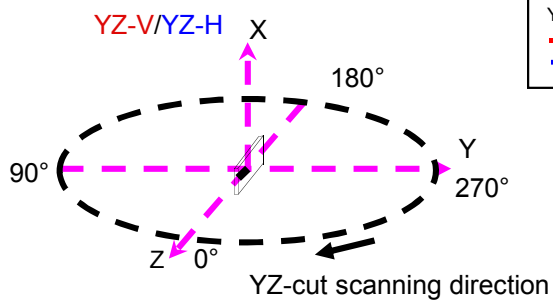
Typical Radiation Patterns



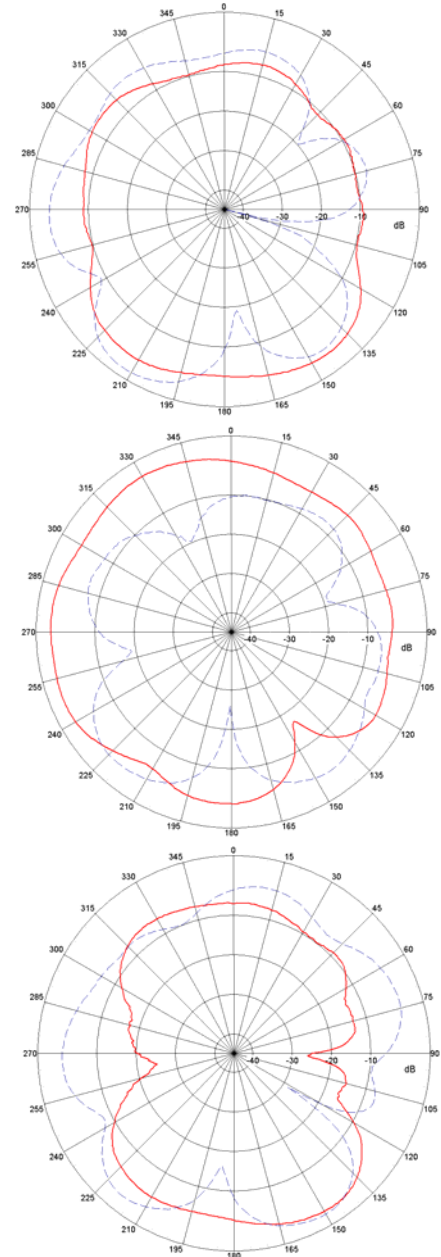
XY cut @2.45GHz  
 — Vertical  
 - - - Horizontal



XZ cut @2.45GHz  
 — Vertical  
 - - - Horizontal



YZ cut @2.45GHz  
 — Vertical  
 - - - Horizontal



Johanson Technology, Inc. reserves the right to make design changes without notice. Please confirm the specifications and delivery conditions when placing your order. All sales are subject to Johanson Technology, Inc. terms and conditions.



[www.johansontechnology.com](http://www.johansontechnology.com)

4001 Calle Tecate • Camarillo, CA 93012 • TEL 805.389.1166 FAX 805.389.1821

2012 Johanson Technology, Inc. All Rights Reserved