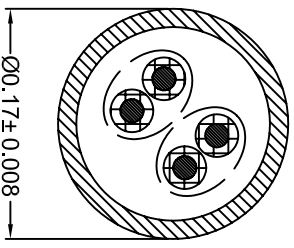
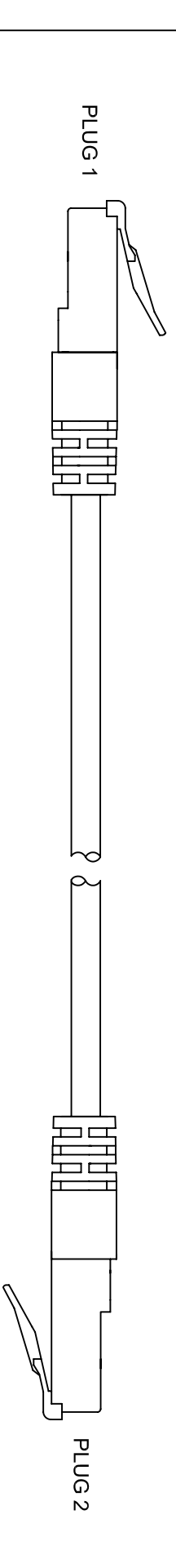
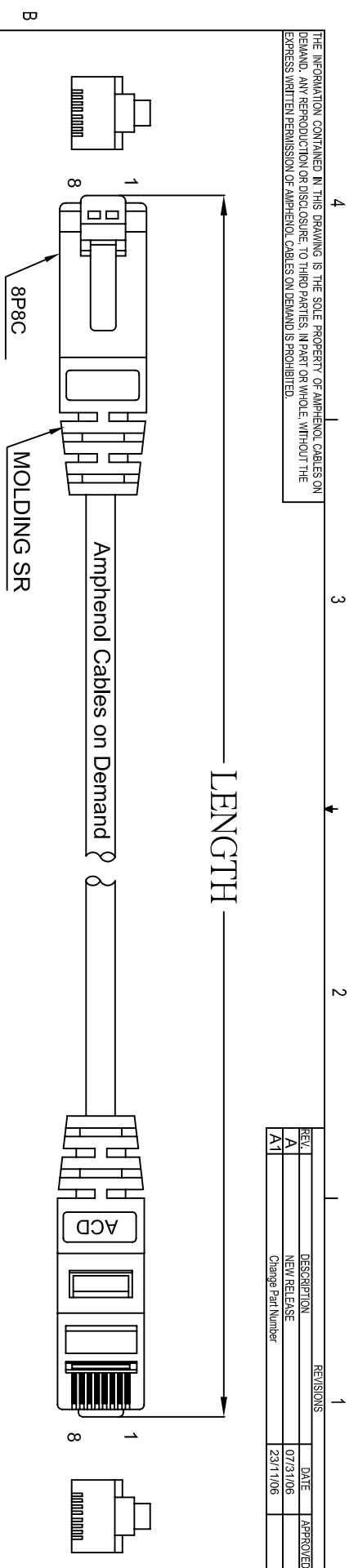


THE INFORMATION CONTAINED IN THIS DRAWING IS THE SOLE PROPERTY OF AMPHENOL CABLES ON DEMAND. ANY REPRODUCTION OR DISCLOSURE TO THIRD PARTIES, IN PART OR WHOLE, WITHOUT THE EXPRESS WRITTEN PERMISSION OF AMPHENOL CABLES ON DEMAND IS PROHIBITED.

REV.	DESCRIPTION	REVISIONS	DATE	APPROVED
A	NEW RELEASE		07/31/06	
A1	Change Part Number		2/3/11/06	



PIN OUT: Crossover		
PLUG 1	PLUG 2	COLOR
PIN 1	PIN 3	WHITE/ORANGE
PIN 2	PIN 6	ORANGE
PIN 3	PIN 1	WHITE/BLUE
PIN 6	PIN 2	BLUE

LENGTH & P/N Table

LENGTH	P/N	Cable Color
3FT ± 1 inch	MP-5XRJ45UNNB-003	BLUE
7FT ± 2 inch	MP-5XRJ45UNNB-007	BLUE
10FT ± 3 inch	MP-5XRJ45UNNB-010	BLUE
15FT ± 3 inch	MP-5XRJ45UNNB-015	BLUE



UNLESS OTHERWISE SPECIFIED DIMENSIONS ARE IN INCHES TOLERANCES ARE:		EARN NO.		DATE		Amphenol Cables on Demand 20 VALLEY ST. ENDICOTT, NY 13760	
DENOM.	ANGLES	APPROVALS	DATE	CHECKED	DATE	SIZE	DWG. NO.
X	± X°	LF	23/11/06	BA	23/11/06	A	MP-5XRJ45UNNB-XXX
.XX	±.XX						ASM CBL RJ45/RJ45
.XXX	±.XXX						CAT. 5E XVR 2PR BLUE
THIRD ANGLE PROJECTION		RESP ENG					
MFG ENG							