

# Customer Information Sheet

DRAWING No.: M80-415XX98

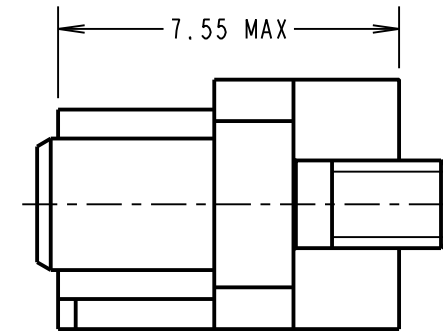
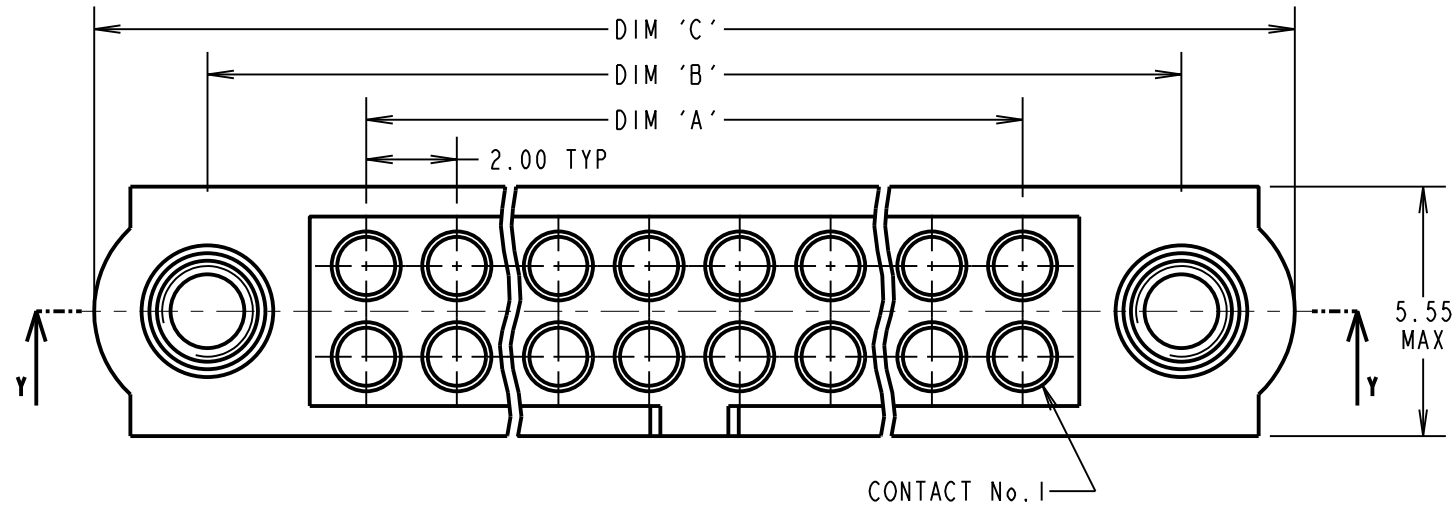
IF IN DOUBT - ASK

©

NOT TO SCALE

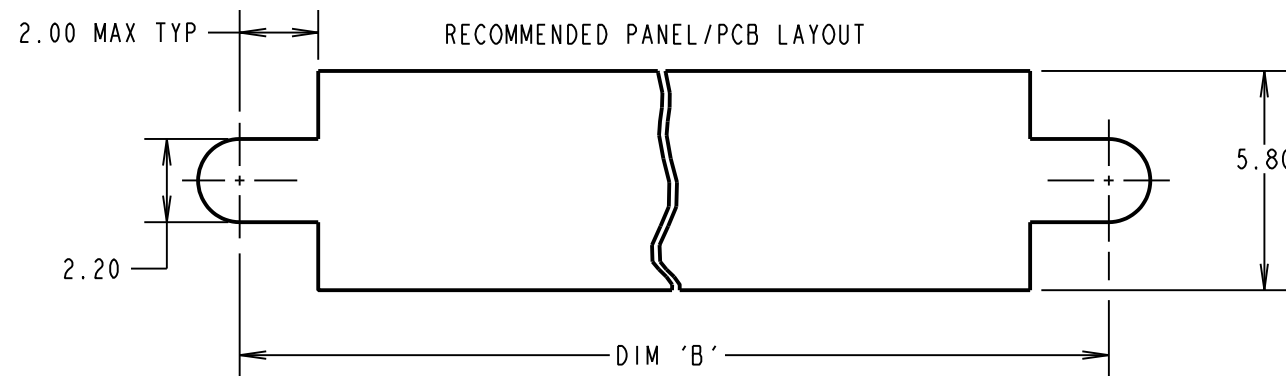
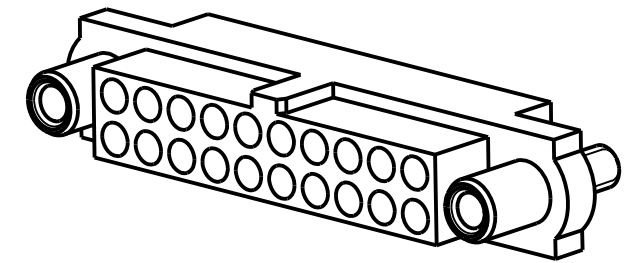
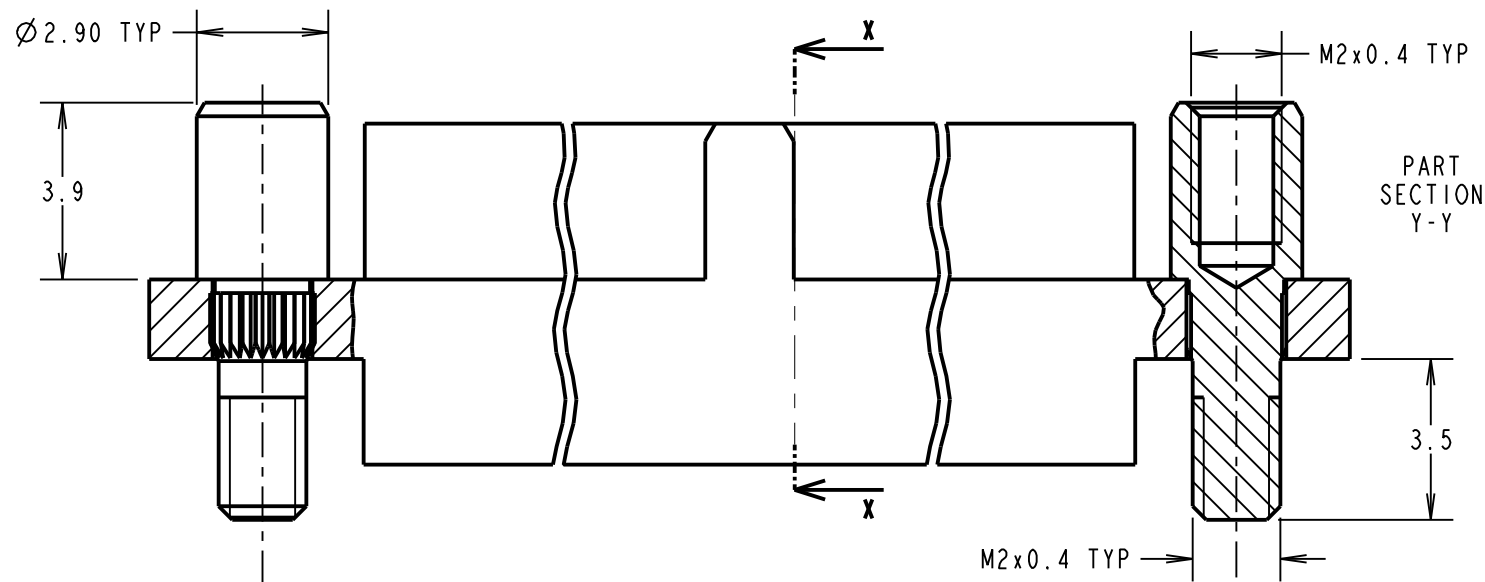
THIRD ANGLE PROJECTION

ALL DIMENSIONS IN mm



**SPECIFICATIONS:**

MATERIAL:  
 MOULDING: GLASS FILLED PPS, UL94V-0, BLACK  
 ENVIRONMENTAL:  
 TEMPERATURE RANGE = -55°C TO +125°C  
 PACKING:  
 BAG  
 FOR COMPLETE SPECIFICATION SEE COMPONENT SPECIFICATION C005XX (LATEST ISSUE)



**NOTES:**

- HOUSING TO BE USED WITH M80-2060005 CONTACTS. CONTACTS ARE SOLD SEPERATELY.
- FOR ASSEMBLY INSTRUCTION, SEE IS-25.
- JACKSCREW NUTS SOLD SEPERATELY. USE PART NUMBER M80-2130000B OR M80-2430000B FOR A BAG OF 12 NUTS.

ORDER CODE:

**M80-415XX98**

TOTAL No. OF POSITIONS: \_\_\_\_\_  
 04 TO 50  
 (EVEN NUMBERS ONLY)

MSP	1	12.04.17	-----
NAME	ISS.	DATE	C/NOTE
APPROVED: M.PERREN			
CHECKED: S.BENNETT			
DRAWN: M.PERREN			
CUSTOMER REF.:			
ASSEMBLY DRG:			

DIMENSION	CALCULATION
DIM 'A'	TOTAL No. OF POSITIONS - 2
DIM 'B'	TOTAL No. OF POSITIONS + 5
DIM 'C'	TOTAL No. OF POSITIONS + 10

EXAMPLE: HOUSING WITH 20 POSITIONS AND FIXINGS, M80-4152098

DIM 'A' = 18.00mm, DIM 'B' = 25.00mm,  
 DIM 'C' = 30.00mm

**HARWIN**

www.harwin.com  
 technical@harwin.com

THIS DRAWING AND ANY INFORMATION OR DESCRIPTIVE MATTER SET OUT HEREON ARE CONFIDENTIAL AND COPYRIGHT PROPERTY OF THE HARWIN GROUP AND MUST NOT BE DISCLOSED, LOANED, COPIED OR USED FOR MANUFACTURING, TENDERING OR FOR ANY OTHER PURPOSE WITHOUT THEIR WRITTEN PERMISSION.

TOLERANCES  
 X. = ±1mm  
 X.X = ±0.25mm  
 X.XX = ±0.10mm  
 X.XXX = ±0.01mm  
 ANGLES = ±5°  
 UNLESS STATED

MATERIAL:  
 SEE ABOVE  
 FINISH: SEE ABOVE  
 S/AREA: mm<sup>2</sup>

TITLE: FEMALE T-CONTACT J-TEK CRIMP HOUSING WITH REV.FIX BOARDMOUNT JACKSCREW  
 DRAWING NUMBER:  
**M80-415XX98**  
 SHT 2 OF 2

# Mouser Electronics

Authorized Distributor

Click to View Pricing, Inventory, Delivery & Lifecycle Information:

## Harwin:

[M80-4150698](#) [M80-4150898](#) [M80-4155098](#) [M80-4151498](#) [M80-4154298](#) [M80-4150498](#) [M80-4152098](#) [M80-4153498](#) [M80-4151098](#) [M80-4151298](#) [M80-4151698](#) [M80-4151898](#) [M80-4152298](#) [M80-4152498](#) [M80-4152698](#) [M80-4154498](#) [M80-4154698](#) [M80-4154898](#) [M80-4152898](#) [M80-4153098](#) [M80-4153298](#) [M80-4153698](#) [M80-4153898](#) [M80-4154098](#)