

Grove - HCHO Sensor

SKU 101020001

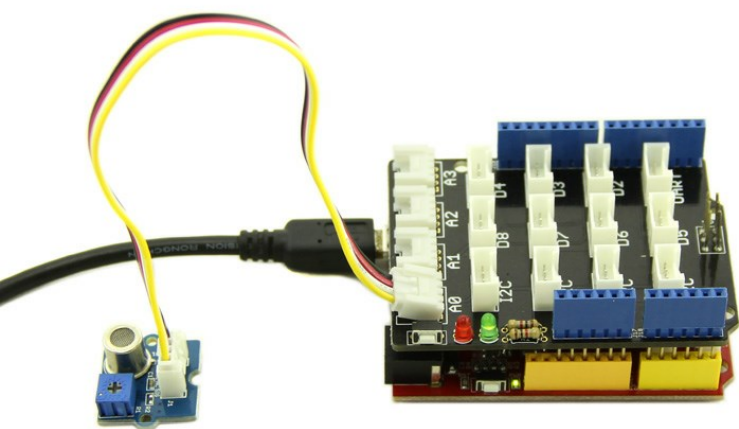


- Up to 1ppm high sensibility
- Built with VOC sensor WSP2110
- Covers HCHO, Benzene, Toluene, Alcohol etc
- Grove connector compatible
- Easy to use

IN STOCK 9 AvailableQty: [ADD TO CART](#)

Description

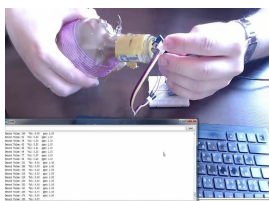
The Grove - HCHO Sensor is a semiconductor VOC gas sensor. It uses the VOC sensor WSP2110 whose conductivity changes with the concentration of VOC gas in air. With a circuit, the conductivity can be converted to an output signal that corresponds to the gas concentration. This sensor has a very high sensitivity and stability, it can detect the gas whose concentration is up to 1ppm. It can be used to detect Toluene, Methanal, Benzene, Alcohol, Acetone etc. This product can be used to detect the presence of harmful gas in the home environment. It can be a good assistant to improve indoor air quality.

[See More](#) ▾

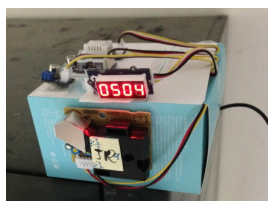
Recipes



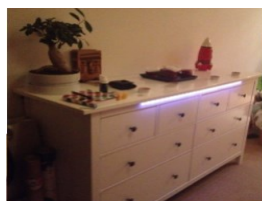
Air Quality Box



Arduino and HCHO (Benzene, Toluene, Alcohol) Sensor



AIR Quality Box



Ikea IOT of furniture

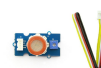
Documents

[Wiki](#)

Recommendations



Grove - Dust Sensor



Grove - Gas Sensor(MQ9)



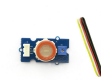
Base Shield V2



Grove - Gas Sensor(MQ2)



Grove - Gas Sensor(MQ5)



Grove - Gas Sensor(MQ3)



Grove - Temperature & Humidity...



Grove - OLED Display 0.96"



Grove - Air quality sensor v1.3



Grove - Gas Sensor(O2)



Grove - CO2 Sensor

Questions and Answers

Have a question about this? Ask people who own it.

Downloaded from [Arrow.com](#)

Does this come with the cable shown in the picture in the description? If not, what kind is it?

Angier Allen on Oct 19,2016

Reply | upvote (0)

View History



Grove - Speaker



Grove - Serial Camera Kit



LinkIt ONE



Raspberry Pi A+&B+&2 40pin to 26pin Cable



Raspberry Pi A+&B+&2 GPIO Reference Board

ADD TO CART

ADD TO CART

ADD TO CART

ADD TO CART

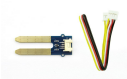
ADD TO CART



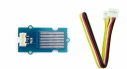
Grove - UV Sensor



LiPo Rider Pro



Grove - Moisture Sensor



Grove - Water Sensor



Grove - PIR Motion Sensor



Grove - Loudness Sensor



Grove - Alcohol Sensor



Grove - 4 pin Female Jumper to Grove...

Grove - Multichannel Gas Sensor

POPULAR SEARCHES

- PCB Manufacturing
- PCB Stencil
- Arduino
- XBee
- Arduino Shield
- Beaglebone Black
- Raspberry Pi
- Raspberry Pi Touchscreen
- Linkit
- Cubieboard
- Beaglebone Cape
- FPGA
- Linkit ONE
- Crazyflie 2.0
- Raspberry Pi 3 Model B
- RF Explorer
- DSO Nano v3
- MediaTek X20
- HiKey Board
- rplidar
- raspberry pi relay
- RPLIDAR A2

SHIPPING INFORMATION

KNOWLEDGE BASE

HELP CENTER

Seed Info

- Reach Us
- Distributors
- Designers
- Careers
- Site Map

Customer Service

- Contact Us
- Customer Support
- Technical Support

Terms and Conditions

- Order Information
- Shipping Information
- Payment Information
- Warranty and Return
- Terms of use
- Privacy Policy

Stay Tuned

Subscribe to get the latest product releases, activities and tutorials from Seeed Studio.

