

PP-H 1,5/S/4 (1GNYE/3GY) - Plug



3212537

<https://www.phoenixcontact.com/us/products/3212537>

Please be informed that the data shown in this PDF document is generated from our online catalog. Please find the complete data in the user documentation. Our general terms of use for downloads are valid.



Plug, nom. voltage: 500 V, nominal current: 17.5 A, number of connections: 4, number of positions: 4, connection method: Push-in connection, 1 level, Rated cross section: 1.5 mm², cross section: 0.14 mm² - 1.5 mm², color: gray/green-yellow

Your advantages

- Large-surface labeling option
- The Push-in technology COMBI plugs for self-assembly provide solutions that users can implement themselves
- Tested for railway applications

Commercial data

Item number	3212537
Packing unit	50 pc
Minimum order quantity	1 pc
Product key	BE2244
GTIN	4055626025421
Weight per piece (including packing)	6.81 g
Weight per piece (excluding packing)	6.81 g
Country of origin	PL

PP-H 1,5/S/4 (1GNYE/3GY) - Plug



3212537

<https://www.phoenixcontact.com/us/products/3212537>

Technical data

Product properties

Product type	Terminal plug
Area of application	Railway industry
	Machine building
	Plant engineering
Number of positions	4
Pitch	3.5 mm
Number of connections	4
Number of rows	1
Type	other
Potentials	4

Insulation characteristics

Overvoltage category	III
Degree of pollution	3

Electrical properties

Rated surge voltage	6 kV
Maximum power dissipation for nominal condition	0.56 W

Connection data

Number of connections per level	4
Nominal cross section	1.5 mm ²

1 level

Stripping length	8 mm
Internal cylindrical gage	A1 / B1
Connection in acc. with standard	IEC 61984
Conductor cross section rigid	0.14 mm ² ... 1.5 mm ²
Cross section AWG	26 ... 14 (converted acc. to IEC)
Conductor cross section flexible	0.14 mm ² ... 1.5 mm ²
Conductor cross section, flexible [AWG]	26 ... 14 (converted acc. to IEC)
Conductor cross-section flexible (ferrule without plastic sleeve)	0.14 mm ² ... 1.5 mm ²
Flexible conductor cross section (ferrule with plastic sleeve)	0.14 mm ² ... 1 mm ²
Nominal current	17.5 A (observe derating)
Maximum load current	17.5 A (with 1.5 mm ² conductor cross section)
Nominal voltage	500 V
Nominal cross section	1.5 mm ²

1 level Connection cross sections directly pluggable

Conductor cross section rigid	0.25 mm ² ... 1.5 mm ²
Conductor cross-section flexible (ferrule without plastic sleeve)	0.34 mm ² ... 1.5 mm ²
Flexible conductor cross section (ferrule with plastic sleeve)	0.34 mm ² ... 1 mm ²

PP-H 1,5/S/4 (1GNYE/3GY) - Plug



3212537

<https://www.phoenixcontact.com/us/products/3212537>

Dimensions

Width	14 mm
Height	31.3 mm
Pitch	3.5 mm

Material specifications

Color	gray/green-yellow
Flammability rating according to UL 94	V0
Insulating material group	I
Insulating material	PA
Static insulating material application in cold	-60 °C
Temperature index of insulation material (DIN EN 60216-1 (VDE 0304-21))	130 °C
Relative insulation material temperature index (Elec., UL 746 B)	130 °C
Fire protection for rail vehicles (DIN EN 45545-2) R22	HL 1 - HL 3
Fire protection for rail vehicles (DIN EN 45545-2) R23	HL 1 - HL 3
Fire protection for rail vehicles (DIN EN 45545-2) R24	HL 1 - HL 3
Fire protection for rail vehicles (DIN EN 45545-2) R26	HL 1 - HL 3
Calorimetric heat release NFPA 130 (ASTM E 1354)	28 MJ/kg
Surface flammability NFPA 130 (ASTM E 162)	passed
Specific optical density of smoke NFPA 130 (ASTM E 662)	passed
Smoke gas toxicity NFPA 130 (SMP 800C)	passed

Mechanical properties

Mechanical data

Open side panel	Yes
-----------------	-----

Environmental and real-life conditions

Ambient conditions

Ambient temperature (storage/transport)	-25 °C ... 60 °C (for a short time, not exceeding 24 h, -60 °C to +70 °C)
Ambient temperature (assembly)	-5 °C ... 70 °C
Ambient temperature (actuation)	-5 °C ... 70 °C
Permissible humidity (storage/transport)	30 % ... 70 %

Standards and regulations

Connection in acc. with standard	IEC 61984
----------------------------------	-----------

PP-H 1,5/S/4 (1GNYE/3GY) - Plug

3212537

<https://www.phoenixcontact.com/us/products/3212537>



Drawings

Circuit diagram



PP-H 1,5/S/4 (1GNYE/3GY) - Plug



3212537

<https://www.phoenixcontact.com/us/products/3212537>

Classifications

ECLASS

ECLASS-11.0

27141151

ETIM

ETIM 8.0

EC002021

UNSPSC

UNSPSC 21.0

39121400

PP-H 1,5/S/4 (1GNYE/3GY) - Plug



3212537

<https://www.phoenixcontact.com/us/products/3212537>

Environmental product compliance

EU RoHS

Fulfills EU RoHS substance requirements	Yes, No exemptions
---	--------------------

China RoHS

Environment friendly use period (EFUP)	EFUP-E
	No hazardous substances above the limits

EU REACH SVHC

REACH candidate substance (CAS No.)	No substance above 0.1 wt%
-------------------------------------	----------------------------

PP-H 1,5/S/4 (1GNYE/3GY) - Plug

3212537

<https://www.phoenixcontact.com/us/products/3212537>

Accessories

PR 1,5/S - Latching

3212882

<https://www.phoenixcontact.com/us/products/3212882>



Latching, width: 3.3 mm, height: 28.9 mm, number of positions: 1, color: orange

PR 1,5/S/2 - Latching

3212895

<https://www.phoenixcontact.com/us/products/3212895>



Latching, width: 6.8 mm, height: 28.9 mm, number of positions: 2, color: orange

PP-H 1,5/S/4 (1GNYE/3GY) - Plug

3212537

<https://www.phoenixcontact.com/us/products/3212537>



PRZ 1,5/S - Latching

3212905

<https://www.phoenixcontact.com/us/products/3212905>



Latching, length: 59 mm, color: orange

PZ 1,5/S/2 - Strain relief

3212918

<https://www.phoenixcontact.com/us/products/3212918>



Strain relief, width: 6.8 mm, height: 44.5 mm, number of positions: 2, color: black

PP-H 1,5/S/4 (1GNYE/3GY) - Plug

3212537

<https://www.phoenixcontact.com/us/products/3212537>



PSH 3- 6 - Shield connection clamp

3040591

<https://www.phoenixcontact.com/us/products/3040591>

Shield connection clamp, nom. voltage: 300 V, color: black



PSH 5-10 - Shield connection clamp

3040601

<https://www.phoenixcontact.com/us/products/3040601>

Shield connection clamp, nom. voltage: 300 V, color: black



PP-H 1,5/S/4 (1GNYE/3GY) - Plug

3212537

<https://www.phoenixcontact.com/us/products/3212537>

PH 1,5/S/3 - Cable housing

3212756

<https://www.phoenixcontact.com/us/products/3212756>



Cable housing, pitch: 10.5 mm, depth: 36.8 mm, width: 10.5 mm, height: 19.9 mm, number of positions: 3, color: gray

PH 1,5/S/4 - Cable housing

3212769

<https://www.phoenixcontact.com/us/products/3212769>



Cable housing, pitch: 14 mm, depth: 36.8 mm, width: 14 mm, height: 19.9 mm, number of positions: 4, color: gray

PP-H 1,5/S/4 (1GNYE/3GY) - Plug

3212537

<https://www.phoenixcontact.com/us/products/3212537>



PH 1,5/S/5 - Cable housing

3212772

<https://www.phoenixcontact.com/us/products/3212772>



Cable housing, pitch: 17.5 mm, depth: 36.8 mm, width: 17.5 mm, height: 19.9 mm, number of positions: 5, color: gray

PH 1,5/S/6 - Cable housing

3212785

<https://www.phoenixcontact.com/us/products/3212785>



Cable housing, pitch: 21 mm, depth: 36.8 mm, width: 21 mm, height: 19.9 mm, number of positions: 6, color: gray

PP-H 1,5/S/4 (1GNYE/3GY) - Plug

3212537

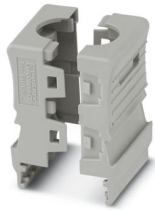
<https://www.phoenixcontact.com/us/products/3212537>



PH 1,5/S/7 - Cable housing

3212798

<https://www.phoenixcontact.com/us/products/3212798>



Cable housing, pitch: 24.5 mm, depth: 36.8 mm, width: 24.5 mm, height: 19.9 mm, number of positions: 7, color: gray

PH 1,5/S/8 - Cable housing

3212808

<https://www.phoenixcontact.com/us/products/3212808>



Cable housing, pitch: 28 mm, depth: 36.8 mm, width: 28 mm, height: 19.9 mm, number of positions: 8, color: gray

PP-H 1,5/S/4 (1GNYE/3GY) - Plug

3212537

<https://www.phoenixcontact.com/us/products/3212537>



PH 1,5/S/9 - Cable housing

3212811

<https://www.phoenixcontact.com/us/products/3212811>



Cable housing, pitch: 31.5 mm, depth: 36.8 mm, width: 31.5 mm, height: 19.9 mm, number of positions: 9, color: gray

PH 1,5/S/10 - Cable housing

3212824

<https://www.phoenixcontact.com/us/products/3212824>



Cable housing, pitch: 35 mm, depth: 36.8 mm, width: 35 mm, height: 19.9 mm, number of positions: 10, color: gray

PP-H 1,5/S/4 (1GNYE/3GY) - Plug

3212537

<https://www.phoenixcontact.com/us/products/3212537>



PH 1,5/S/11 - Cable housing

3212837

<https://www.phoenixcontact.com/us/products/3212837>

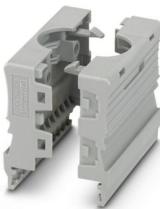


Cable housing, pitch: 38.5 mm, depth: 36.8 mm, width: 38.5 mm, height: 19.9 mm, number of positions: 11, color: gray

PH 1,5/S/12 - Cable housing

3212840

<https://www.phoenixcontact.com/us/products/3212840>



Cable housing, pitch: 42 mm, depth: 36.8 mm, width: 42 mm, height: 19.9 mm, number of positions: 12, color: gray

PP-H 1,5/S/4 (1GNYE/3GY) - Plug

3212537

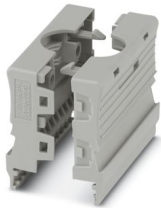
<https://www.phoenixcontact.com/us/products/3212537>



PH 1,5/S/13 - Cable housing

3212853

<https://www.phoenixcontact.com/us/products/3212853>



Cable housing, pitch: 45.5 mm, depth: 36.8 mm, width: 45.5 mm, height: 19.9 mm, number of positions: 13, color: gray

PH 1,5/S/14 - Cable housing

3212866

<https://www.phoenixcontact.com/us/products/3212866>



Cable housing, pitch: 49 mm, depth: 36.8 mm, width: 49 mm, height: 19.9 mm, number of positions: 14, color: gray

PP-H 1,5/S/4 (1GNYE/3GY) - Plug

3212537

<https://www.phoenixcontact.com/us/products/3212537>



PH 1,5/S/15 - Cable housing

3212879

<https://www.phoenixcontact.com/us/products/3212879>



Cable housing, pitch: 52.5 mm, depth: 36.8 mm, width: 52.5 mm, height: 19.9 mm, number of positions: 15, color: gray

SZF 0-0,4X2,5 - Screwdriver

1204504

<https://www.phoenixcontact.com/us/products/1204504>



Actuation tool, for ST terminal blocks, also suitable for use as a bladed screwdriver, size: 0.4 x 2.5 x 75 mm, 2-component grip, with non-slip grip

PP-H 1,5/S/4 (1GNYE/3GY) - Plug

3212537

<https://www.phoenixcontact.com/us/products/3212537>



ST-BW 0 - Actuation tool

1200135

<https://www.phoenixcontact.com/us/products/1200135>



Actuation tool, for all 1.5 mm² spring cages from PT 1,5/S and FT 1,5/S

AI-S 1 - 8 TQ - Ferrule

1200293

<https://www.phoenixcontact.com/us/products/1200293>



Ferrule, S-Slimline, sleeve length: 8 mm, color: turquoise

PP-H 1,5/S/4 (1GNYE/3GY) - Plug

3212537

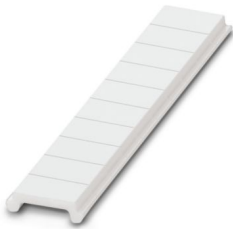
<https://www.phoenixcontact.com/us/products/3212537>



ZBF 3,5:UNBEDRUCKT - Zack Marker strip, flat

0829392

<https://www.phoenixcontact.com/us/products/0829392>

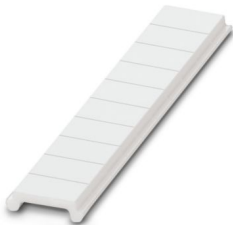


Zack Marker strip, flat, Strip, white, unlabeled, can be labeled with: PLOTMARK, CMS-P1-PLOTTER, mounting type: snapped, for terminal block width: 3.5 mm, lettering field size: 3.5 x 5.2 mm, Number of individual labels: 10

ZBF 3,5 CUS - Zack Marker strip, flat

0829394

<https://www.phoenixcontact.com/us/products/0829394>



Zack Marker strip, flat, can be ordered: Strip, white, labeled according to customer specifications, mounting type: snap into flat marker groove, for terminal block width: 3.5 mm, lettering field size: 3.5 x 5.2 mm, Number of individual labels: 10

PP-H 1,5/S/4 (1GNYE/3GY) - Plug

3212537

<https://www.phoenixcontact.com/us/products/3212537>



ZBF 3,5,LGS:FORTL.ZAHLEN - Zack Marker strip, flat

0801406

<https://www.phoenixcontact.com/us/products/0801406>

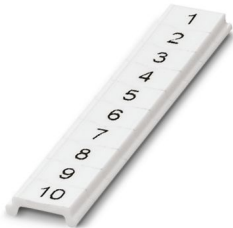


Zack Marker strip, flat, Strip, white, labeled, printed horizontally: consecutive numbers 1 ... 10, 11 ... 20, etc. up to 91 ... 100, mounting type: snapped, for terminal block width: 3.5 mm, lettering field size: 5.15 x 3.5 mm, Number of individual labels: 10

ZBF 3,5,QR:FORTL.ZAHLEN - Zack Marker strip, flat

0801407

<https://www.phoenixcontact.com/us/products/0801407>



Zack Marker strip, flat, Strip, white, labeled, Printed vertically: consecutive numbers 1 ... 10, 11 ... 20, etc. up to 91 ... 100, mounting type: snapped, for terminal block width: 3.5 mm, lettering field size: 5.15 x 3.5 mm, Number of individual labels: 10

PP-H 1,5/S/4 (1GNYE/3GY) - Plug

3212537

<https://www.phoenixcontact.com/us/products/3212537>



UCT-TMF 3,5 - Marker for terminal blocks

0829486

<https://www.phoenixcontact.com/us/products/0829486>



Marker for terminal blocks, Sheet, white, unlabeled, can be labeled with: TOPMARK NEO, TOPMARK LASER, BLUEMARK ID COLOR, BLUEMARK ID, BLUEMARK CLED, THERMOMARK PRIME, THERMOMARK CARD 2.0, THERMOMARK CARD, mounting type: snapped, for terminal block width: 3.5 mm, lettering field size: 2.7 x 4.7 mm, Number of individual labels: 108

UCT-TMF 3,5 CUS - Marker for terminal blocks

0829644

<https://www.phoenixcontact.com/us/products/0829644>



Marker for terminal blocks, can be ordered: by sheet, white, labeled according to customer specifications, mounting type: snap into flat marker groove, for terminal block width: 3.5 mm, lettering field size: 2.7 x 4.7 mm, Number of individual labels: 108

PP-H 1,5/S/4 (1GNYE/3GY) - Plug

3212537

<https://www.phoenixcontact.com/us/products/3212537>



MPS-MT - Test plug

0201744

<https://www.phoenixcontact.com/us/products/0201744>



Test plug, with solder connection up to 1 mm² conductor cross section, number of positions: 1, color: gray

MPS-IH WH - Insulating sleeve

0201663

<https://www.phoenixcontact.com/us/products/0201663>

Insulating sleeve, color: white



PP-H 1,5/S/4 (1GNYE/3GY) - Plug

3212537

<https://www.phoenixcontact.com/us/products/3212537>



MPS-IH RD - Insulating sleeve

0201676

<https://www.phoenixcontact.com/us/products/0201676>

Insulating sleeve, color: red

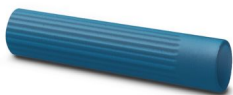


MPS-IH BU - Insulating sleeve

0201689

<https://www.phoenixcontact.com/us/products/0201689>

Insulating sleeve, color: blue



PP-H 1,5/S/4 (1GNYE/3GY) - Plug

3212537

<https://www.phoenixcontact.com/us/products/3212537>



MPS-IH YE - Insulating sleeve

0201692

<https://www.phoenixcontact.com/us/products/0201692>

Insulating sleeve, color: yellow



MPS-IH GN - Insulating sleeve

0201702

<https://www.phoenixcontact.com/us/products/0201702>

Insulating sleeve, color: green



PP-H 1,5/S/4 (1GNYE/3GY) - Plug

3212537

<https://www.phoenixcontact.com/us/products/3212537>



MPS-IH GY - Insulating sleeve

0201728

<https://www.phoenixcontact.com/us/products/0201728>

Insulating sleeve, color: gray



MPS-IH BK - Insulating sleeve

0201731

<https://www.phoenixcontact.com/us/products/0201731>

Insulating sleeve, color: black



Phoenix Contact 2024 © - all rights reserved
<https://www.phoenixcontact.com>

Phoenix Contact USA
586 Fulling Mill Road
Middletown, PA 17057, United States
(+717) 944-1300
info@phoenixcon.com