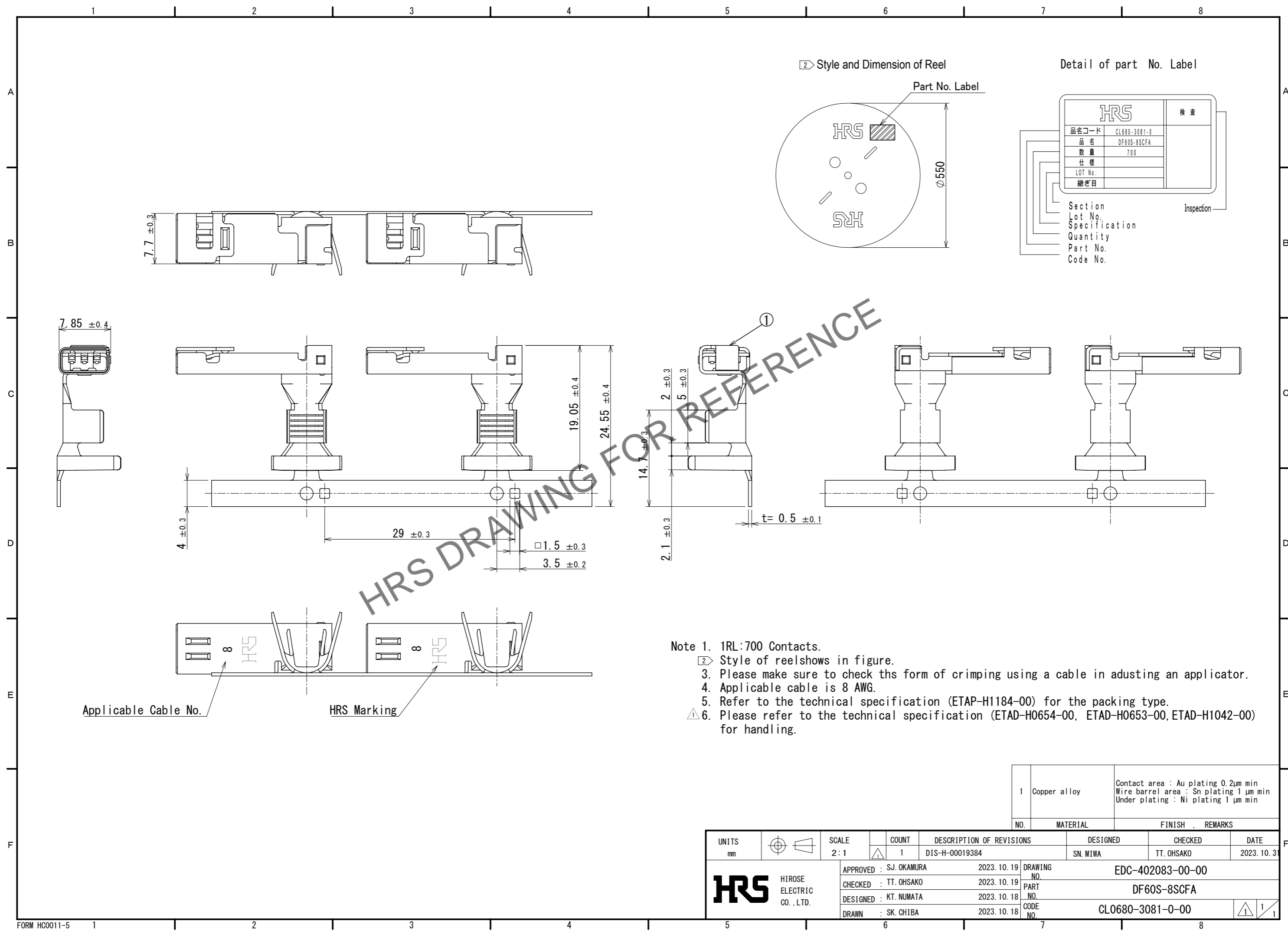


Sep.1.2024 Copyright 2024 HIROSE ELECTRIC CO., LTD. All Rights Reserved.
In case of consideration for using Automotive equipment / device which demand high reliability, kindly contact our sales window correspondents.



HRS DRAWING FOR REFERENCE

- Note 1. 1RL:700 Contacts.
- ② Style of reel shows in figure.
3. Please make sure to check the form of crimping using a cable in adjusting an applicator.
4. Applicable cable is 8 AWG.
5. Refer to the technical specification (ETAP-H1184-00) for the packing type.
- ⚠ 6. Please refer to the technical specification (ETAD-H0654-00, ETAD-H0653-00, ETAD-H1042-00) for handling.

1	Copper alloy	Contact area : Au plating 0.2μm min Wire barrel area : Sn plating 1 μm min Under plating : Ni plating 1 μm min
NO.	MATERIAL	FINISH , REMARKS

UNITS mm		SCALE 2:1	COUNT 1	DESCRIPTION OF REVISIONS DIS-H-00019384	DESIGNED SN. MIWA	CHECKED TT. OHSAKO	DATE 2023. 10. 31
HIROSE ELECTRIC CO., LTD.		APPROVED : SJ. OKAMURA 2023. 10. 19	DRAWING NO. EDC-402083-00-00				
		CHECKED : TT. OHSAKO 2023. 10. 19	PART NO. DF60S-8SCFA				
		DESIGNED : KT. NUMATA 2023. 10. 18	CODE NO. CL0680-3081-0-00				
		DRAWN : SK. CHIBA 2023. 10. 18					