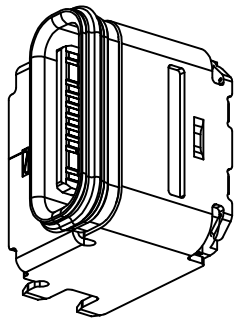
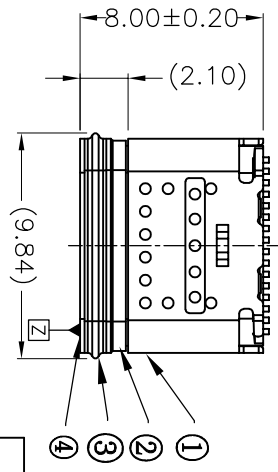
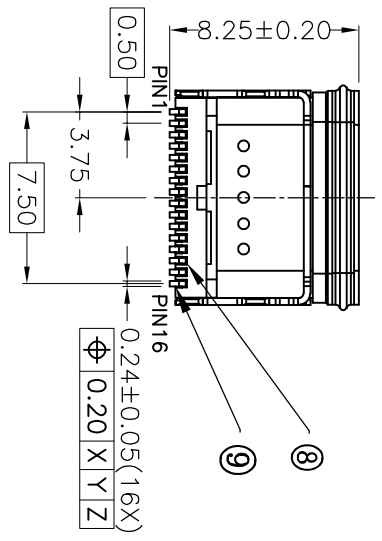
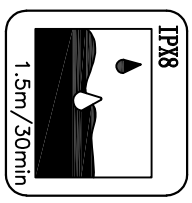
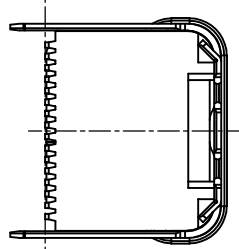
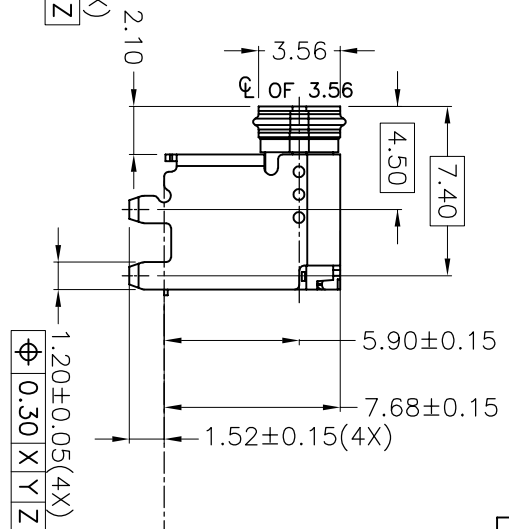
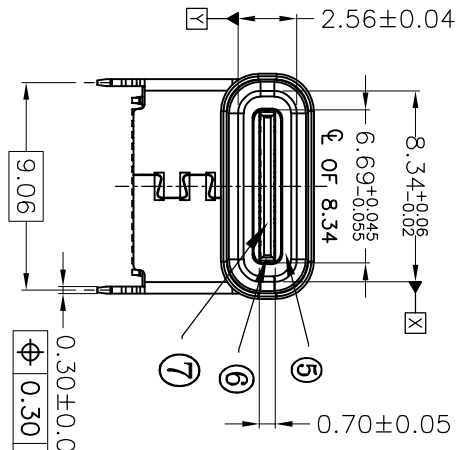


CUSTOMER

REV.	ECN NO.	DESCRIPTION	DATE	DESIGN



- ① 下端子 铜合金 镀金
- ② 上端子 铜合金 镀金
- ③ I/M LCP /
- ④ 中隔板 不锈钢 水洗
- ⑤ EMI 不锈钢 水洗
- ⑥ 内铁壳 不锈钢 水洗
- ⑦ 密封胶 /
- ⑧ 钢圈 不锈钢 水洗
- ⑨ 外铁壳 不锈钢 镀镍

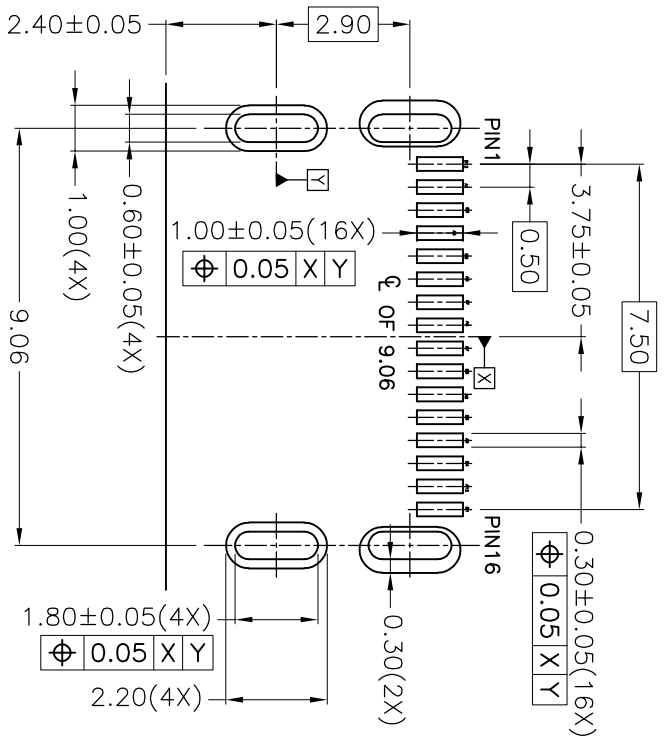
序号	数量	零件名称	材料	镀层
①	1	下端子	铜合金	镀金
②	1	上端子	铜合金	镀金
③	1	I/M	LCP	/
④	1	中隔板	不锈钢	水洗
⑤	1	EMI	不锈钢	水洗
⑥	1	内铁壳	不锈钢	水洗
⑦	1	密封胶	硅胶	/
⑧	1	钢圈	不锈钢	水洗
⑨	1	外铁壳	不锈钢	镀镍

TOLERANCE		NAME (INTENDED USE)	
X.X ±0.30 X.X' ±10°	±10°	CUSTOMER DRAWING	
XX ±0.20 X.X' ±8°	±8°	PART NO.	F723-0121C161F780-59
.XXX ±0.10 .XX' ±5°	±5°	DESIGN:	ZXM
UNITS	mm	CHEG:	
MATERILA		APPD:	
FINISH			

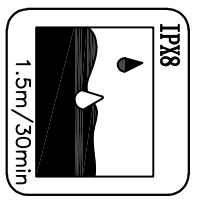
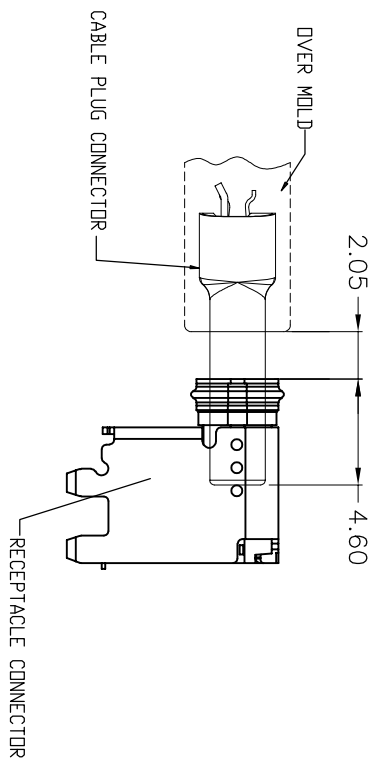
DRAWG NO.		TITLE:	
F723-0121C161F780-59		16P防水母座垫高CH5.9	
SCALE	SHEET	REV.	
1:1	1/2	A	

Notes:
 1. ELECTRICAL characteristics:
 1-1. Dielectric withstanding: 500V AC/1minute.
 1-2. Current rating:
 Vbus and GND contact: 2A, 25A/pin, Paralleled for a total of 5A Min
 Other contacts: 20, 25A/pin
 1-3. Initial LCR 40mΩ max, after test Δ10mΩ max:
 40mΩ MAX FOR VBUS, GND AND OTHER CONTACTS,
 50mΩ MAX FINAL AFTER TEST.
 1-4. Insulation Resistance: 1000MΩ Min
 2. Mechanical characteristics
 2-1. Insert force: 5-20N MAX.
 Withdraw force: 8-20N, after test: 6-20N
 2-2. Durability: 10000 cycles min
 2-3. Laser point: Height < 0.05mm, Pulling force: 50N
 3. Environment characteristics
 3-1. Operating temperature: -40°~+85°C
 3-2. Salty spray: 48hours (EIA-364-26B-B)
 4. Burr: 0.05MM MAX.
 5. Tape and reel packing satisfy EIA-364-481 standard

REV.	ECN NO.	DESCRIPTION	DATE	DESIGN



RECOMMENDED PCB LAYOUT(TOP VIEW)
PCB THICKNESS 1.72±0.05MM



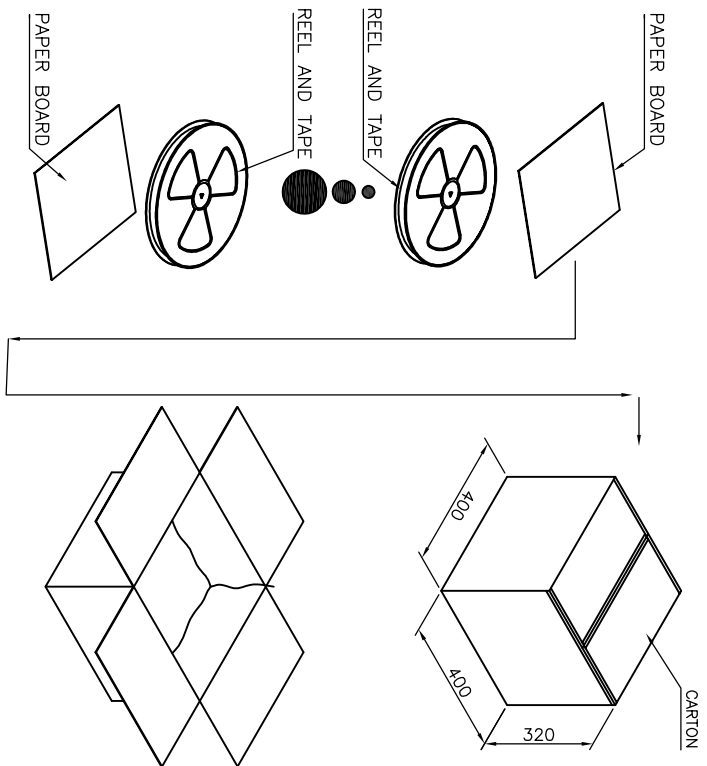
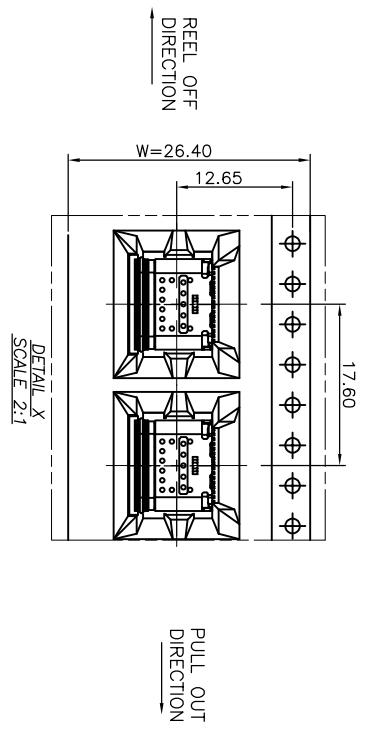
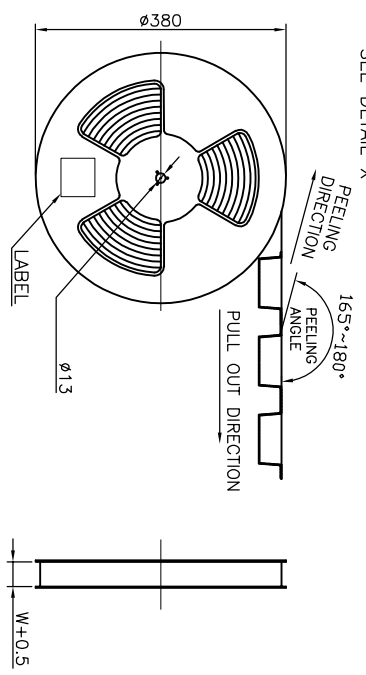
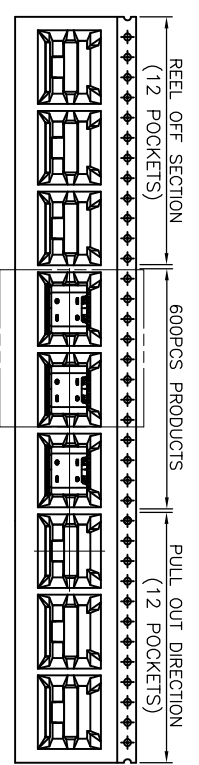
Pin	Signal	Description	Mating Sequence	Description	Signal	Pin	
2	A1	GND	Ground return	First	GND	B12 1	
/	A2	TX1+	/	Second	RX1+	B11 /	
/	A3	TX1-	/	Second	RX1-	B10 /	
4	A4	VBUS	Bus Power	First	VBUS	B9 3	
6	A5	CC1	Configuration Channel	Second	SBUS2	B8 5	
8	A6	D+	Positive half of the USB 2.0 differential pair-Position 1	Second	D-	B7 7	
9	A7	D-	Negative half of the USB 2.0 differential pair-Position 1	Second	D+	B6 10	
11	A8	SBUS1	Sideband Use(SBU)	Second	Configuration Channel	CC2	B5 12
13	A9	VBUS	Bus Power	First	VBUS	B4 14	
/	A10	RX2-	/	Second	TX2-	B3 /	
/	A11	RX2+	/	Second	TX2+	B2 /	
15	A12	GND	Ground return	First	GND	B1 16	

TOLERANCE		NAME(INTENDED USE) CUSTOMER DRAWING		DRAWG NO. F23-0121C161F780-59	
X.X ±0.30	X: ±10'	PART NO. F23-0121C161F780-59		TITLE: 16P防水母座垫高CH5.9	
.XX ±0.20	.X: ±8'	DESIGN: ZXM		SCALE SHEET REV. 1:1 1/2 A	
.XXX ±0.10	.XX: ±5'	MATERILA		FINISH	
UNITS: mm		CHED: APPD:		SCALE SHEET REV. 1:1 1/2 A	

FUWU 广东富盈实业精密科技实业有限公司
Shenzhen FUWU Precision Electronic Technology Co.,LTD.

CUSTOMER

REV.	ECN NO.	DESCRIPTION	DATE	DESIGN



CONNECTOR (PCS)	REEL	CARTON
	600	6000

每盘真空包装

TOLERANCE		NAME (INTENDED USE) CUSTOMER DRAWING		TITLE:	
X.X	± 0.30	X.X	$\pm 10'$	FYUO 广东富盈兴业精密科技实业有限公司 Guangdong FYUO Precision Electronic Technology Co., Ltd.	
.XX	± 0.20	.X	$\pm 8'$	16F防水母座垫高CH6.9	
.XXX	± 0.10	.XX	$\pm 5'$	DRAWG NO. F23-012TC161F780-59	
UNITS	mm	DESIGN:	ZXM	SCALE SHEET REV.	
MATERILA	----	CHED:		1:1 1/2	
FINISH	-----	APPD:		A	