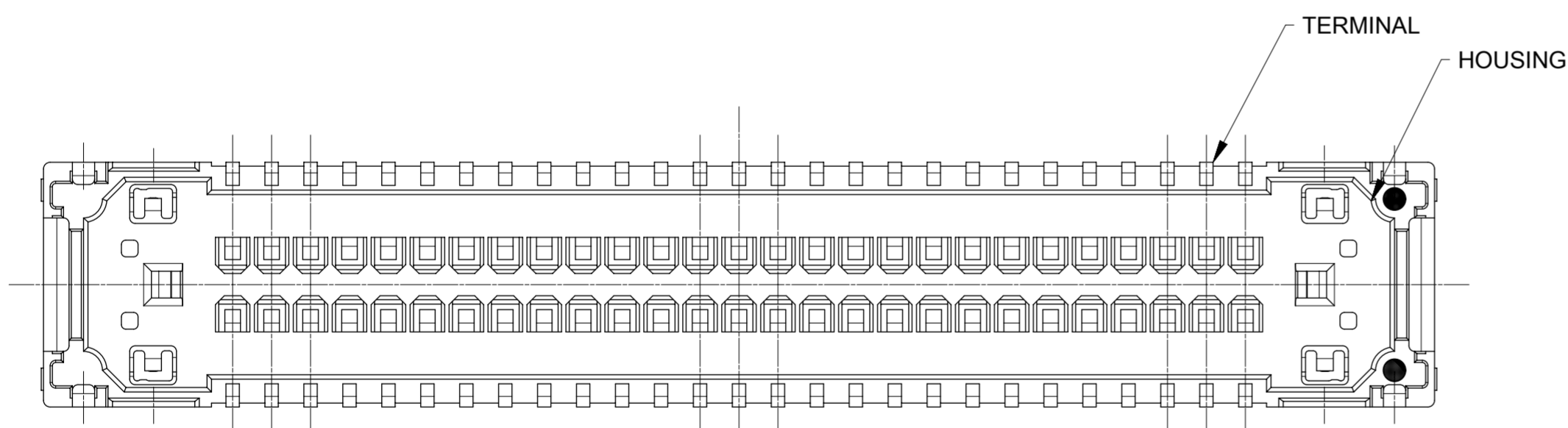
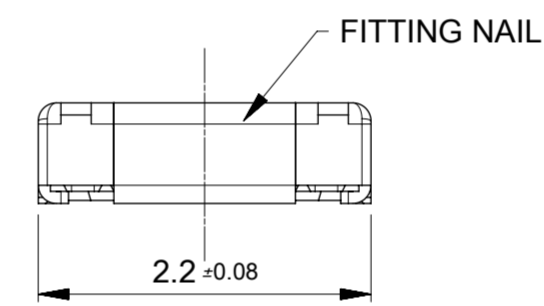
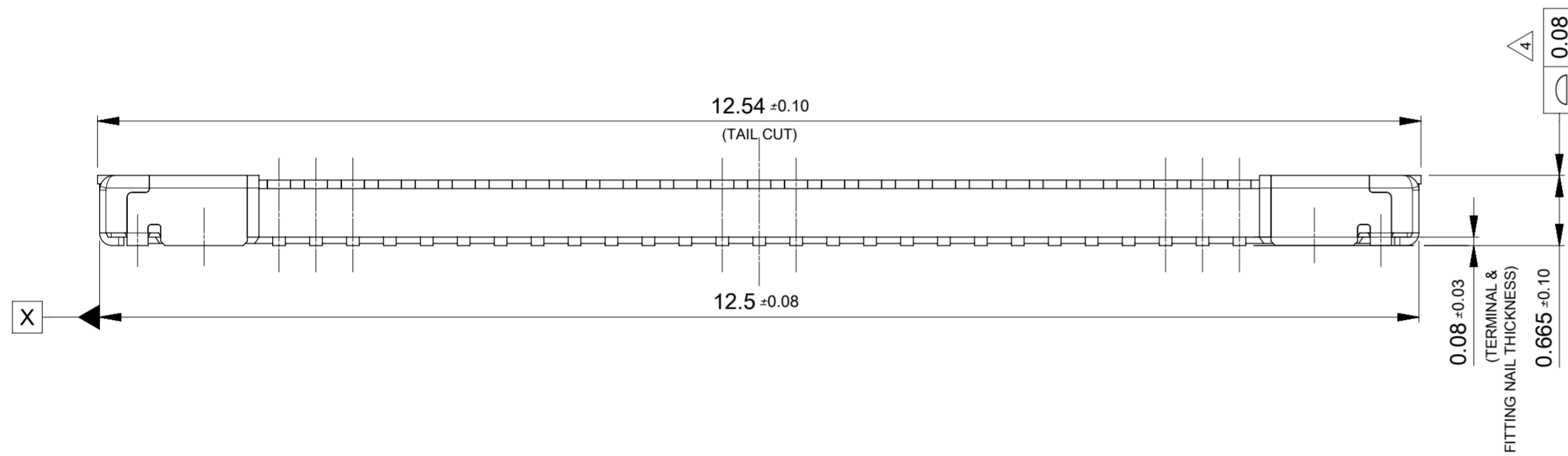
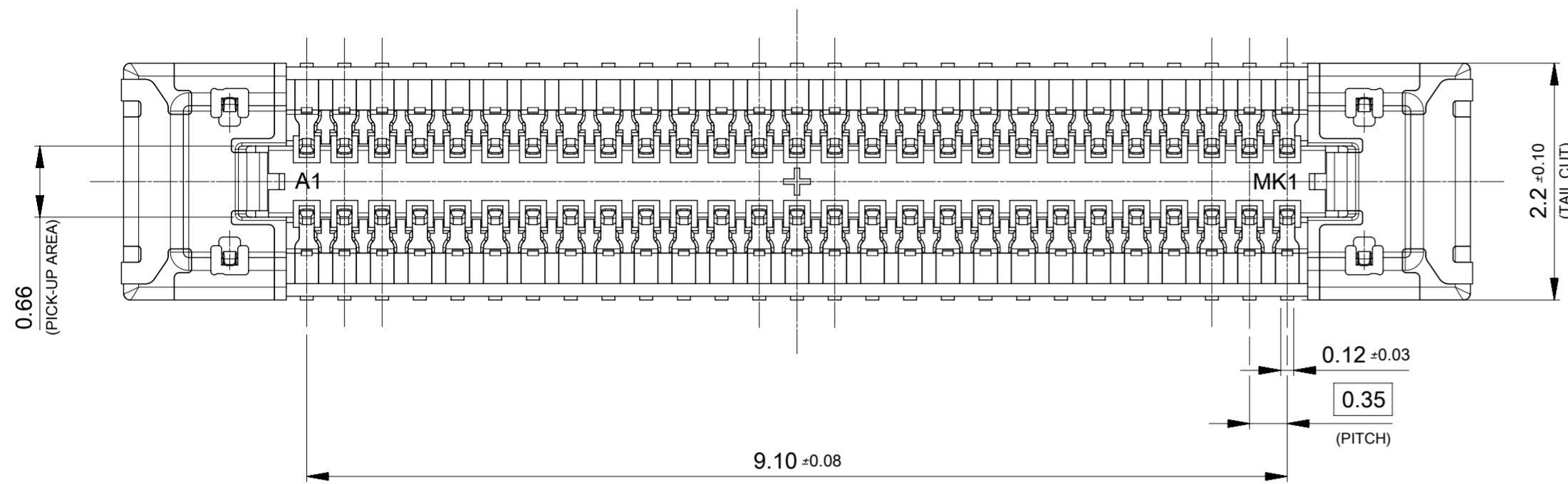


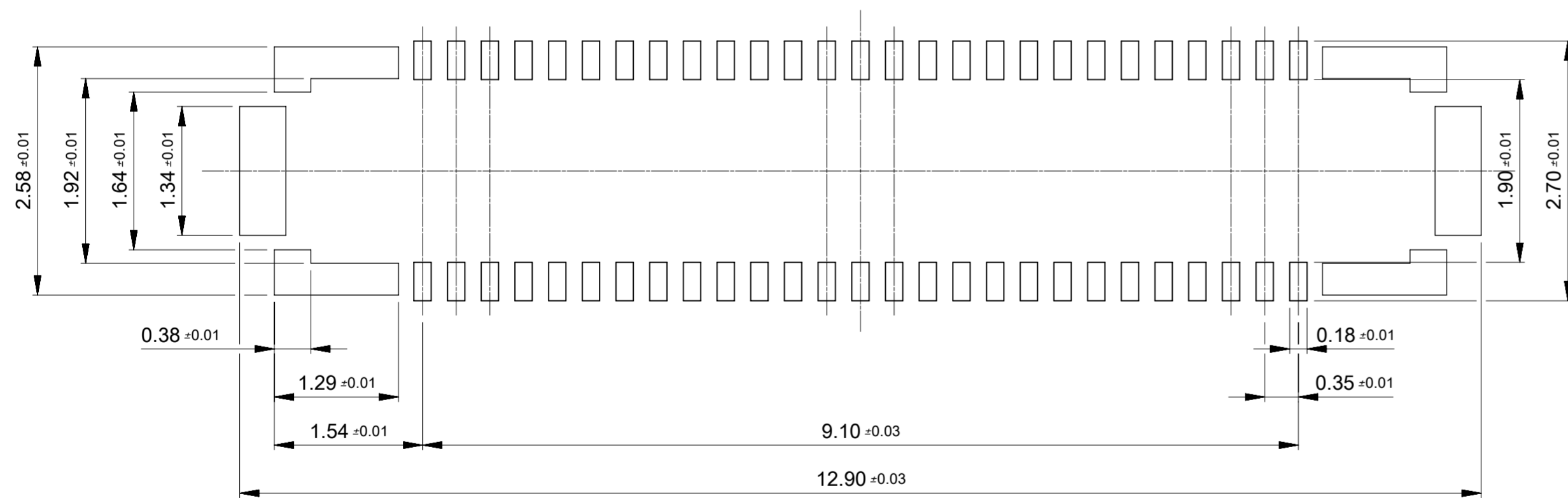
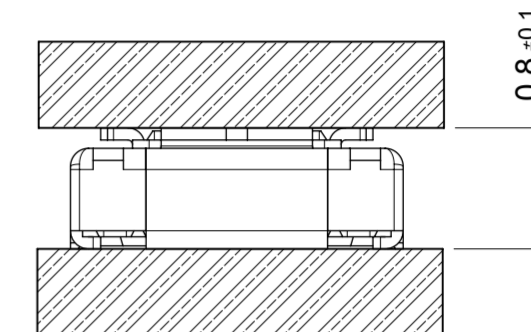
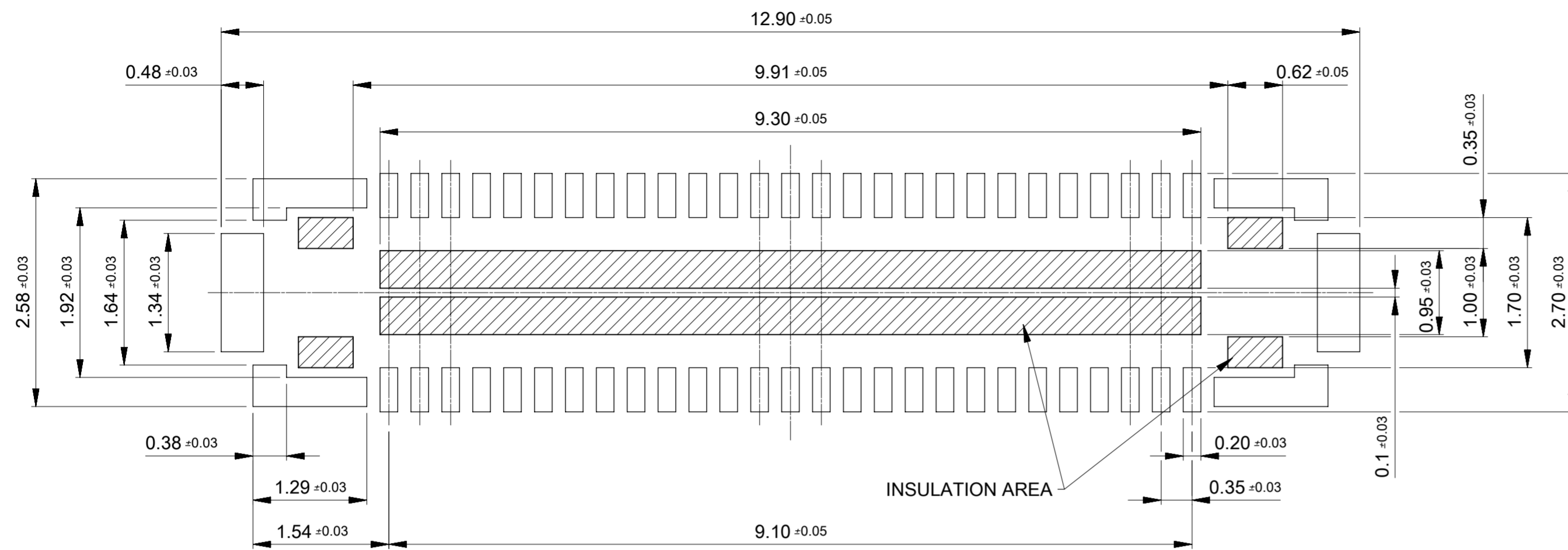
NOTES

1. MATERIAL
 HOUSING : LIQUIDE CRISTAL POLYMER UL94V-0 (COLOR:BLACK)
 TERMINAL : COPPER ALLOY
 FITTING NAIL : COPPER ALLOY
2. PLATING
 - TERMINAL
 CONTACT AREA : GOLD 0.1um MIN.
 TAIL AREA : GOLD 0.05um MIN.
 BASE PLATING : Ni 1.0um MIN.
- FITTING NAIL(POWER)
 CONTACT AREA : GOLD 0.1um MIN.
 TAIL AREA : GOLD 0.05um MIN.
 BASE PLATING : Ni 1.0um MIN.
- DIVIDE INTO PARTS THE GOLD PLATING OF THE CONTACT AND THE TAIL PART BY THE NICKEL BARRIER.
3. MATE WHTH : 2074720540
4. COPLANARITY : SHALL BE 0.08MAX. ON BOTH OF TERMINAL AND NAIL.
 (FOR EACH AREA, THE WIRING THAT TOUCHES ON THE SOLDER CAN BE ATTACHED, THEN COVERED WITH A FILM TO KEEP SOLDER OUT)



2074710541	O	---	54
EMBOSSD TAPE PACKAGE	HIGH VOL. TOOL	LOW VOL. TOOL	Ckts
ORDER No.	SAMPLE PREPARATION		
	O : TOOLED □ : WORK PROCESS --- : TOOLING TO BE CONFIRMED		
CONNECTOR SERIES No. : 2074710540			

SYMBOLS ▽ = 0 ▽ = 0 ▽ = 0 ▽ = 0 ▽ = 0 ▽ = 0 ▽ = 0 ▽ = 0 ▽ = 0 ▽ = 0	THIS DRAWING CONTAINS INFORMATION THAT IS PROPRIETARY TO MOLEX ELECTRONIC TECHNOLOGIES, LLC AND SHOULD NOT BE USED WITHOUT WRITTEN PERMISSION							
	DIMENSION UNITS	SCALE				CURRENT REV DESC:		
	mm	20:1				EC NO: 626666		
	GENERAL TOLERANCES (UNLESS SPECIFIED)					DRWN: SYKO01 2019/10/17		
ANGULAR TOL ± 1.0°		CHK'D: KSKIM 2019/11/01						
4 PLACES ± 0.05		APPR: YSKIM02 2019/11/03						
3 PLACES ± 0.05		INITIAL REVISION:						
2 PLACES ± 0.05		DRWN: SYKO01 2019/01/03						
1 PLACE ± 0.1		APPR: YSKIM02 2019/04/12						
0 PLACES ± 0.2		THIRD ANGLE PROJECTION	DRAWING	SERIES	DOCUMENT NUMBER			
DRAFT WHERE APPLICABLE MUST REMAIN WITHIN DIMENSIONS			A2-SIZE	207471	2074710540			
					DOC TYPE DOC PART REVISION			
					PSD 001 B			
					MATERIAL NUMBER CUSTOMER SHEET NUMBER			
					SEE SHEET 1 GENERAL 1 OF 2			



METAL MASK THICKNESS : WHEN 0.08mm
 - SIGNAL TERMINAL OPENING RATIO : 70%
 - FITTING NAIL(POWER)OPENING RATIO : 100%

SYMBOLS	THIS DRAWING CONTAINS INFORMATION THAT IS PROPRIETARY TO MOLEX ELECTRONIC TECHNOLOGIES, LLC AND SHOULD NOT BE USED WITHOUT WRITTEN PERMISSION		
	DIMENSION UNITS	SCALE	CURRENT REV DESC:
∇ = 0	mm	20:1	EC NO: 626666 DRWN: SYKO01 2019/10/17 CHK'D: KSKIM 2019/11/01 APPR: YSKIM02 2019/11/03
∇ = 0	GENERAL TOLERANCES (UNLESS SPECIFIED)		
∇ = 0	ANGULAR TOL ± 1.0°		INITIAL REVISION: DRWN: SYKO01 2019/01/03 APPR: YSKIM02 2019/04/12
∇ = 0	4 PLACES	± 0.05	
∇ = 0	3 PLACES	± 0.05	DOCUMENT NUMBER 2074710540
∇ = 0	2 PLACES	± 0.05	
∇ = 0	1 PLACE	± 0.1	DOC TYPE PSD
∇ = 0	0 PLACES	± 0.2	
∇ = 0	DRAFT WHERE APPLICABLE MUST REMAIN WITHIN DIMENSIONS	THIRD ANGLE PROJECTION	DOC PART 001
		DRAWING A2-SIZE	REVISION B
		SERIES 207471	SHEET NUMBER 2 OF 2
		MATERIAL NUMBER SEE SHEET 1	CUSTOMER GENERAL

molex

0.35 BTB REC ASSY 54CKTS

PRODUCT CUSTOMER DRAWING