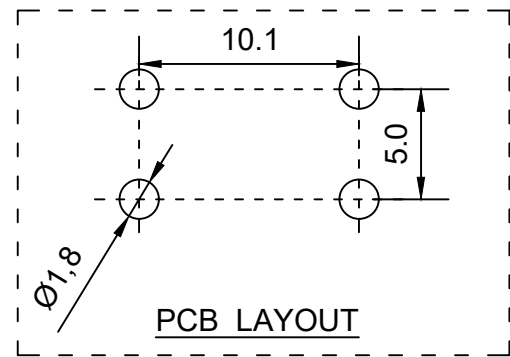
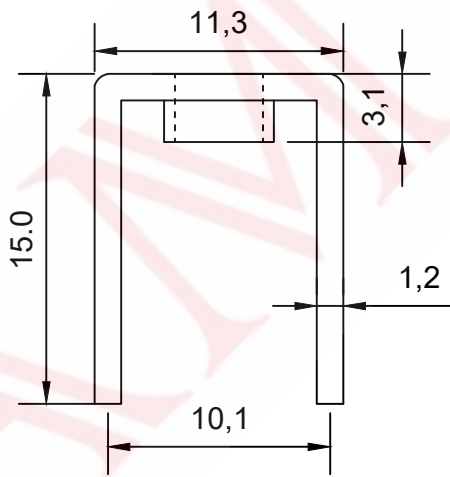
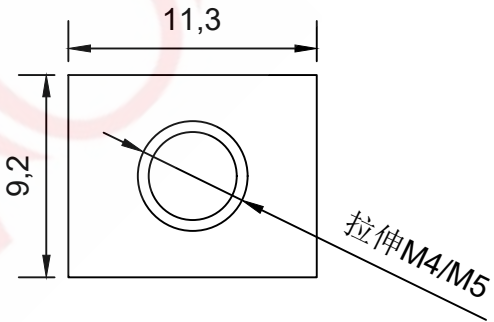
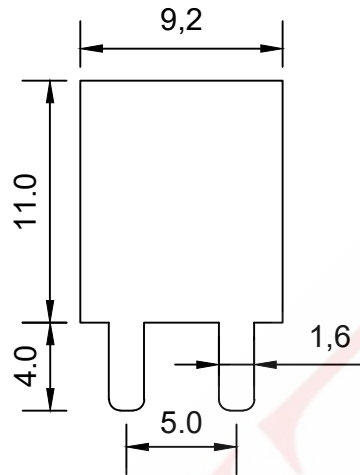


SAMZO REAC/ROHS

| REV | ECN NO | DESCRIPTION | DESIGN | APPROVAL | DATE |
|-----|--------|---------------|--------|----------|------------|
| A1 | NEW | Replace frame | | | 2018.06.12 |
| | | | | | |
| | | | | | |

技术要求:
Technical requirements:

- 打铜底0.5-1UM, 镍底2-2.5UM, 哑锡3-5UM。
 Copper base 0.5 - 1 UM, nickel base 2 - 2.5 UM, matte tin 3 - 5 UM.
- 不得有脚变形, 毛刺等缺陷。
 There shall be no defects such as pin deformation and burrs.
- 插脚尖部符合可焊性要求。
 The tip of the insertion pin shall meet the solderability requirements.
- 螺纹需符合通止规要求。
 The thread shall meet the requirements of the go and no-go gauge.
- 材质: 黄铜H65。
 Material: Brass H65.
- 过载电流: 75A
 Overload current: 75A
- 螺孔为拉伸M4/M5
 The screw holes are press-rieveted M4/M5
- 未标注尺寸公差值按 GB/T1184-1996H级
 Unmarked dimensional tolerance values are in accordance with Grade H of GB/T1184-1996



911 110 40 0 M*

SERISE:
9.2*11.1mm

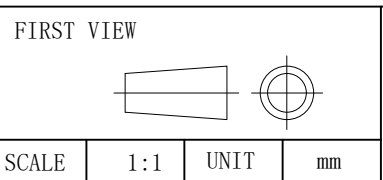
FOOT HIGH:
4.0mm

SCREW HOLE:
M4/M5

HIGH:
11.0mm

CUSTOM CODE:
ROUTINE

| ITEM | DESCRIPTION | MATERIAL | QTY | FINISH/COLOR | DESIGN | DATE | | | |
|-------------------|-------------|----------|-----|--------------|----------|-------------|------------|-------|-------|
| A | Subject | H62(Y2) | 1 | tin plating | | | | | |
| GENERAL TOLERANCE | | | | | | | ≥0~2< | ±0.15 | |
| | | | | | | | ≥2~5< | ±0.25 | |
| | | | | | | | ≥0~2< | ±0.15 | |
| F | | | | | APPROVED | LILIANJIANG | 2018.06.14 | ≥5 | ±0.35 |



The copyright belongs to samzo parts [China] Co., Ltd. please use the material after samzo parts agree to authorize. The final right of interpretation belongs to samzo parts.
 WWW.KKK-JP.COM

| |
|---------------------------------|
| TITLE: 9.2*11.1-H11+4mm (M4/M5) |
| DWG NO: 911-P043 |
| PART NO: 911-23054100 |
| MODEL NO: 911110400-M* |
| NAME: PCB soldering terminal |

SAMZO COMPONENTS
 Electronic switch and connector manufacturer