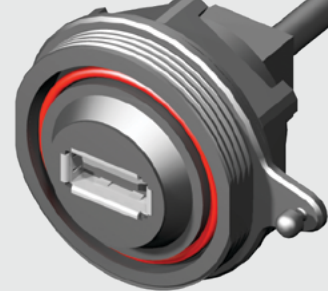


SCRUS-G-00.25-D-C5E



SCRUS-17-G-00.25-AMS-BC

SCRUS, SCRES SERIES

IP68 SEALED USB & ETHERNET

Mates with:

SCPU

SPECIFICATIONS

For complete specifications and recommended panel hole layout see www.samtec.com?SCRUS

Insulator Material:

PBT

Contact Material:

Phosphor Bronze

Wire:

20 AWG (Power)

25 AWG (Signal)

28 AWG (Drain)

O-Ring:

Silicone

Operating Temp Range:

-20 °C to +75 °C

RoHS Compliant:

Yes

RECOGNITIONS

For complete scope of recognitions see www.samtec.com/quality



FILE NO. E71636

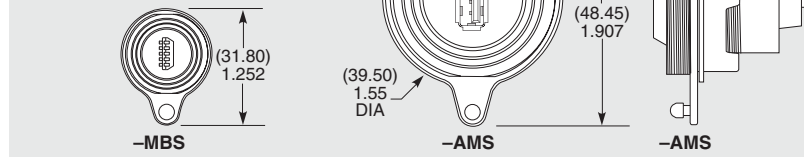
Note:

Some lengths, styles and options are non-standard, non-returnable.

TYPE	SHELL SIZE	PLATING	WIRE LENGTH	END 1 OPTION	END 2 OPTION
SCRUS = Sealed Circular USB Receptacle Cable Assembly	-17 (Standard USB only) -10 (Mini USB only)	-G = 30 μ" (0.76 μm) Gold on Contact, Nickel on Shell	-00.25 = (0.25 m) 9.84" Cable -00.50 = (0.50 m) 19.68" Cable Standard lengths (Assembled Length = Wire Length + (37.9 mm) 1.50")	-AMS = USB A Type, Sealed -BMS = USB B Type, Sealed -MBS = Mini USB B Type, Sealed	-AM = USB A Type, Not Sealed -BM = USB B Type, Not Sealed -MB = Mini USB B Type, Not Sealed -BC = Blunt Cut

DUST CAP
USB Flash Drive Cover: DCA-17-03

Device dimensions: 80.00 mm x 13.30 mm x 20.25 mm max.



OTHER SOLUTIONS

- Termination for standard USB cable from panel-to-board See SCRUS Series.

Mates with:

SCPE

SPECIFICATIONS

For complete specifications and recommended panel hole layout see www.samtec.com?SCRES

Insulator Material:

PBT

Contact Material:

Phosphor Bronze

Shield Material:

Phosphor Bronze

Wire:

24 AWG

O-Ring:

Silicone

Overmold:

PA66

Current Rating:

3.8 A per pin

(1 pin powered)

Operating Temp Range:

-40 °C to +70 °C

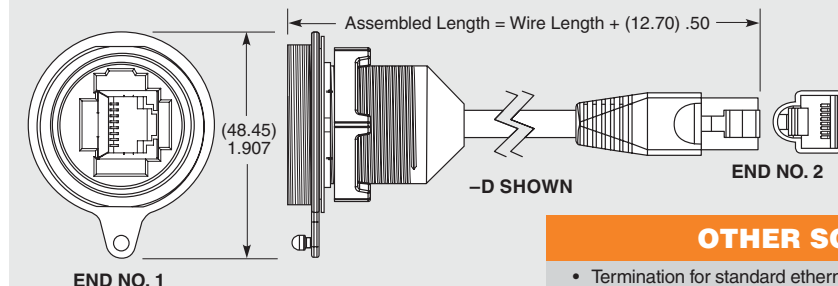
RoHS Compliant:

Yes

Note:

Some lengths, styles and options are non-standard, non-returnable.

TYPE	PLATING	WIRE LENGTH	END OPTION	C5E
SCRES = Sealed Circular Ethernet Receptacle Cable Assembly	-G = 50 μ" (1.27 μm) Gold on Contact, Nickel on Shell	-00.25 = (0.25 m) 9.84" Cable -00.50 = (0.50 m) 19.68" Cable Standard lengths	-D = Double Ended -BC = Blunt Cut	-C5E = Cat 5e rating



DUST CAP & PANEL PLUG

- Dust Cap: DCA-17-01
- Panel Plug: SCPPA-17-01

OTHER SOLUTIONS

- Termination for standard ethernet cable from panel to board

Due to technical progress, all designs, specifications and components are subject to change without notice.