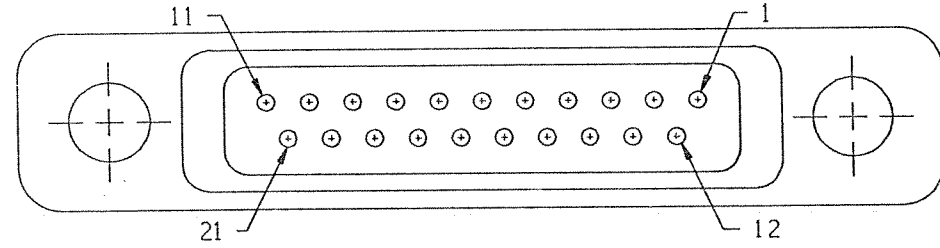
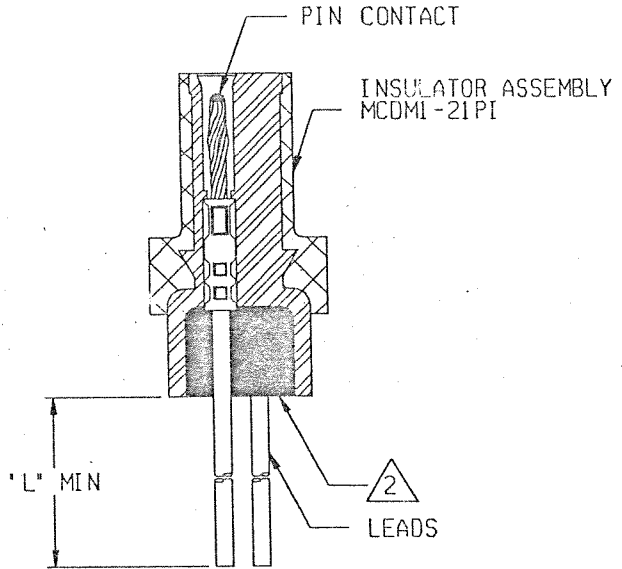
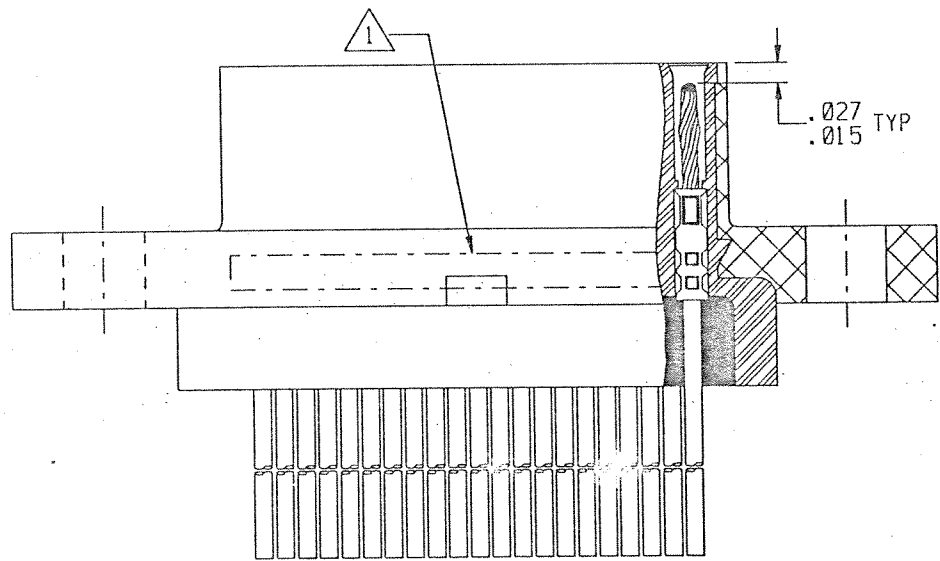
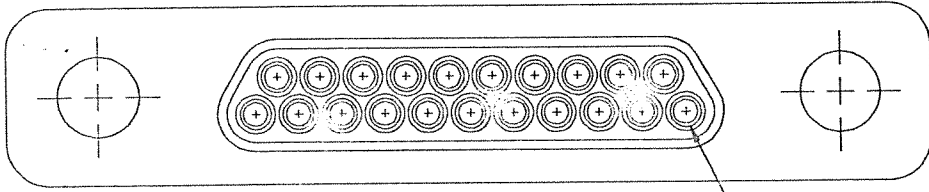



REVISION					
ZONE	LTR	ECN	DESCRIPTION	DATE	APPROVED
	C	39399	GENERAL DWG UPDATE	8/21/00	<i>kw</i>



9-1532142-3

- NOTES: UNLESS OTHERWISE SPECIFIED
- 1 MARK PER TIS.
  - 2 POTTING COMPOUND USED IS 194-8102-6215/6225.
  - 3. CRIMP LEADS INTO CONTACTS PER MEP 302-05.
  - 4. EPOXY WICKING FROM THE REAR OF INSULATOR ON INSULATED LEADS MUST NOT EXCEED .125 MAX ON #25 AWG AND SMALLER LEADS AND .200 MAX ON #24 AWG AND LARGER LEADS.

UNLESS OTHERWISE SPECIFIED DIMENSIONS ARE IN INCHES. TOLERANCE ARE: FRACTIONS ± 1/8 DECIMALS .XX ± .01 .XXX ± .005 ANGLES ± 2°	APPROVALS		 <b>MICRODOT CONNECTORS</b> A DIVISION OF UNI-STAR INDUSTRIES INC. 306 PASADENA AVE., SO. PASADENA, CA 91030	PROD CODE 842 CODE M
	SIGNATURE	DATE		
MATERIALS:	DRAWN BY MEL F. CAMPOS	09/16/99	METAL SHELL 'D' CONNECTOR MCDMI-8-21P	
	P.E. <i>W. Camp</i>	<i>8/21/00</i>		
FINISH:	THIS DOCUMENT IS THE PROPERTY OF MICRODOT CONNECTORS, A DIVISION OF UNI-STAR INDUSTRIES INC. USE OF THIS DOCUMENT OR ANY PART THEREOF IS STRICTLY FORBIDDEN WITHOUT THE EXPRESS WRITTEN PERMISSION OF MICRODOT CONNECTORS, A DIVISION OF UNI-STAR INDUSTRIES INC.		SIZE	CODE IDENT NO.
			A	98278
			DRAWING NO.	842
			095-0000-0076	
			SCALE: NONE	SHEET 1 OF 1