

REVISION A/H#

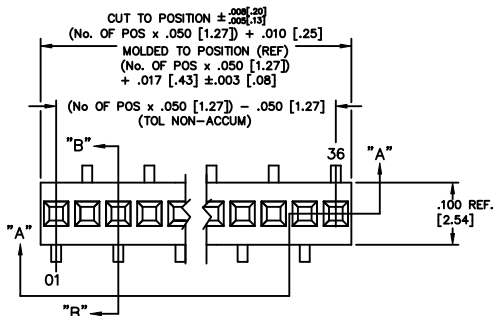
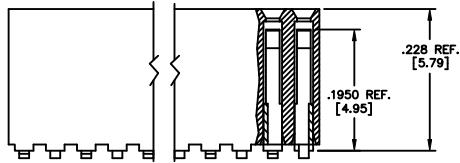
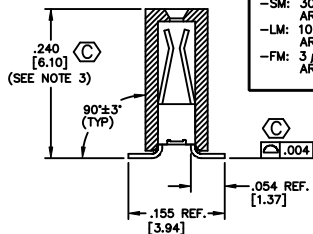
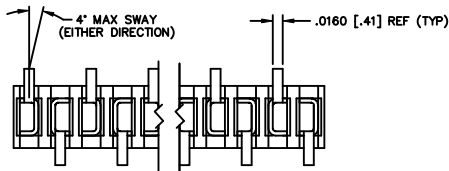


FIG 1



SECT: "A-A"



SECT: "B-B"

RSM-1XX-XX-XXX-S-X-XX

BODY LENGTH SPECIFICATION
-02 THRU -36 POSITIONS
(SEE NOTE 2)

LEAD STYLE
-02: C-64-02-X

PLATING SPECIFICATIONS

- S: 30μ SELECTIVE GOLD IN CONTACT AREA, MATTE TIN ON TAIL
- F: 3μ FLASH SELECTIVE GOLD IN CONTACT AREA, MATTE TIN ON TAIL
- L: 10μ LIGHT SELECTIVE GOLD IN CONTACT AREA, MATTE TIN ON TAIL
- T: MATTE TIN CONTACT AND TAIL
- STL: 30μ SELECTIVE GOLD IN CONTACT CONTACT AREA, TIN/LEAD (90/10+/-5%) TAIL
- TM: MATTE TIN CONTACT AND TAIL
- SM: 30μ SELECTIVE GOLD IN CONTACT AREA, MATTE TIN ON TAIL
- LM: 10μ LIGHT SELECTIVE GOLD IN CONTACT AREA, MATTE TIN ON TAIL
- FM: 3μ FLASH SELECTIVE GOLD IN CONTACT AREA, MATTE TIN ON TAIL

UNLESS OTHERWISE NOTED
DIMENSIONS ARE IN INCHES
TOLERANCES ARE:
ONE PLACE DECIMALS: ±.1
TWO PLACE DECIMALS: ±.01
THREE PLACE DECIMALS: ±.005
FOUR PLACE DECIMALS: ±.0020
ANGLES: ±5°

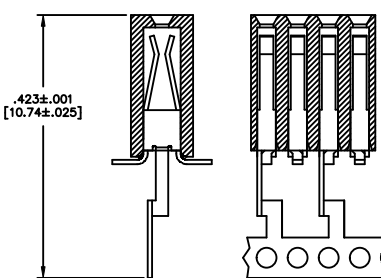
TITLE: RECEPTACLE SURFACE MOUNT (SINGLE ROW)
DWG NO: RSM-1XX-XX-XXX-S-X-XX
SHEET 1 OF 1

- PACKAGING
BLANK: TUBES (SEE NOTE 9)
-TR: TAPE & REEL (SEE NOTES 10 & 11)
-FR: FULL REEL QTY TAPE & REEL (SEE NOTES 10 & 11)
- OPTIONS
-P: PICK AND PLACE PAD (USE PPP-20)(SEE FIG. 2) (AVAILABLE ON POS. 6 THRU 36 ONLY)
-K: POLYIMIDE FILM PAD (AVAILABLE ON POS. 7 THRU 36 ONLY) (SEE FIG. 3) (USE K-DOT-.138-.250-.005)

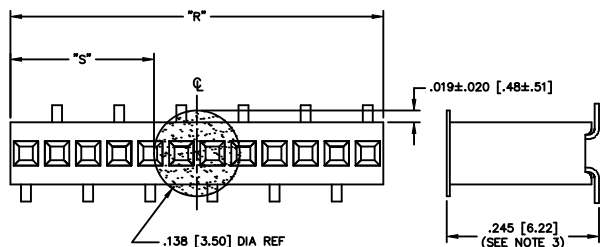
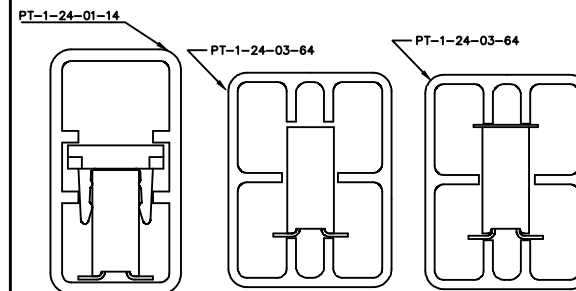
BODY SPECIFICATION
-S: SINGLE ROW (USE RSM-XX-S)

- NOTES:
- PIN ONE TO BE IN DIRECTION OF ARROW ON TUBE
 - FOR ODD POSITIONS, LOSE ONE PIN PER CUT FOR EVEN POSITIONS, LOSE TWO PINS PER CUT
 - MEASURED AT BEND RADIUS
 - MINIMUM RETENTION: 1.0 LB.
 - CUT FLASH TO BE .010" MAX WITH NO FLASH ALLOW IN HOLES OR EXTENDING BELOW LEADS.
 - CONTACTS NOT TO BE INTERLEAVED.
 - Ⓢ REPRESENTS A CRITICAL DIMENSION.
 - INSULATOR MATERIAL: BLACK, LCP, UL 94 V0
 - TUBES ARE STANDARD PACKAGING.
 - ORDERS WILL BE PACKAGED ACCORDING TO THE SAMTEC PACKAGING EFFICIENCY STANDARDS (SPES) FOUND ON WWW.SAMTEC.COM.
 - ATTACH LABEL TO EACH REEL.

OPTION	TUBE	PLUG
-P	PT-1-24-01-14	TP-03
-	PT-1-24-03-64	TP-24
-K	PT-1-24-03-64	TP-24



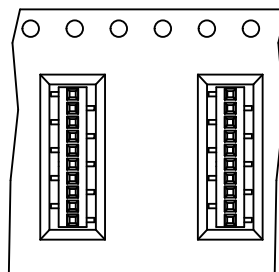
IN-PROCESS VIEW



"R" = USE MEASURED DIMENSION (REF)
"S" = {"R" - .138 [3.50]} / 2 ±.020 [.51]

FIG 3

-K: POLYIMIDE FILM PAD
AVAILABLE ON POS 7 - 36 ONLY

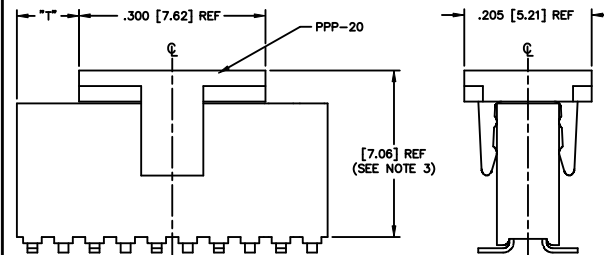


USER DIRECTION OF UNREELING →

POCKET NOT DETAILED

FIG 4

-TR: TAPE AND REEL



"R" = USE MEASURED DIMENSION (REF)
"T" = {"R" - .300}/2 ±.020

FIG 2

-P: PICK AND PLACE PAD
AVAILABLE ON POS 6 - 36 ONLY

PROPRIETARY NOTE
THIS DOCUMENT CONTAINS INFORMATION THAT IS UNCLASSIFIED, BUT WHICH MAY BE SUBJECT TO A PATENT OR TRADE SECRET. IT IS THE POLICY OF SAMTEC TO PROTECT SUCH INFORMATION. THIS DOCUMENT IS THE PROPERTY OF SAMTEC AND IS LOANED TO YOUR ORGANIZATION. IT IS TO BE USED ONLY FOR THE PURPOSES AUTHORIZED BY SAMTEC. IT IS TO BE RETURNED TO SAMTEC UPON REQUEST.

520 PARK EAST BLVD., NEW ALBANY, INDIANA 47150
 PHONE (812) 944-8733 P.O. BOX 1147
 CODE 95322
 MADE BY: GREG REINER 11-24-02
 CHECKED BY: