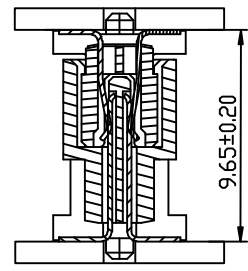
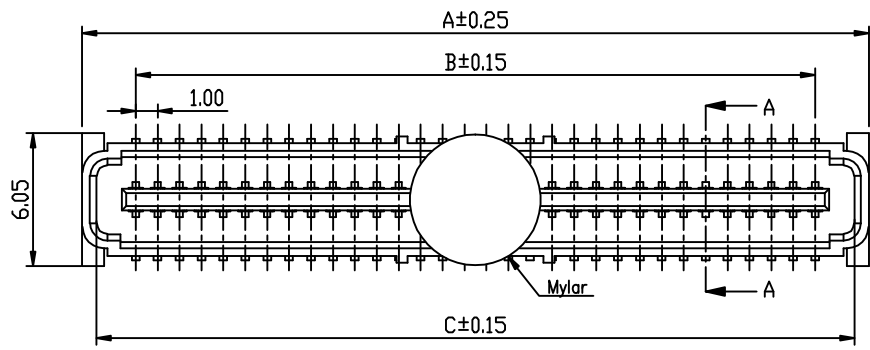
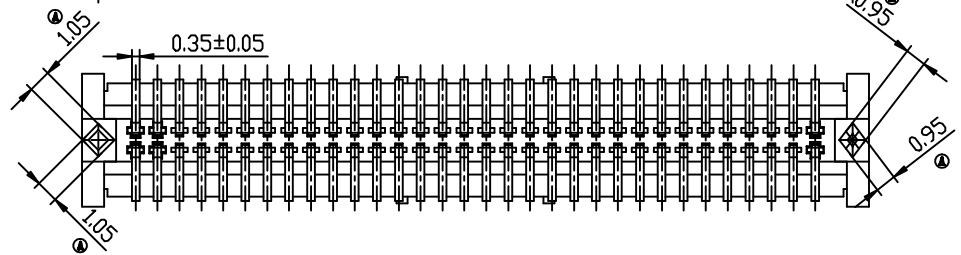
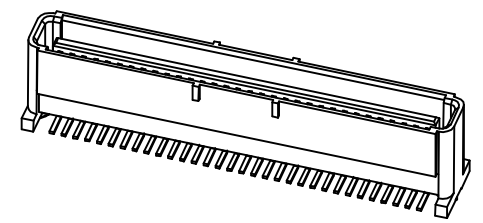
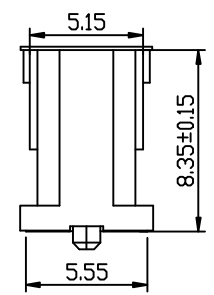
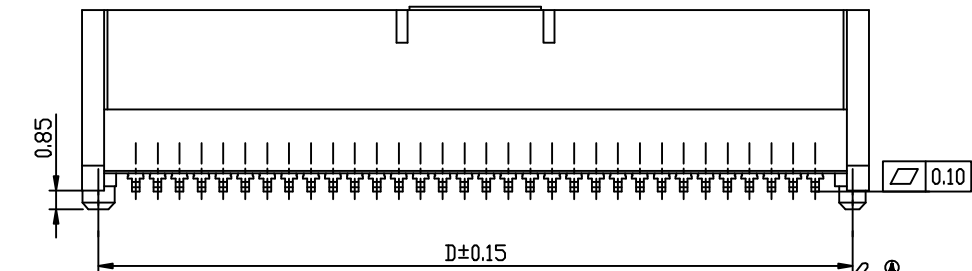


Autodesk 教育版产品制作

Autodesk 教育版产品制作



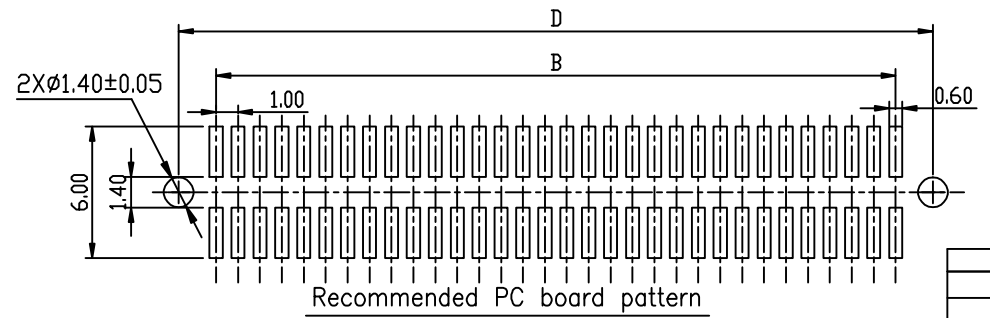
Specifications
 Current Rating: 1.0A AC/DC
 Voltage Rating: 100V AC/DC
 Contact Resistance: 30m ohm. Max
 Withstanding Voltage: 250V(r.m.s) For one Minute
 Operating Temperature Range: -55°C to 125°C
 Materials:
 Insulator: High Temp. Plastic (LCP UL94V-0)
 Color: **Black** Color
 Contact: Phosphor Bronze



Number of Position	A	B	C	D
20	13.90	9.00	12.58	12.40
30	18.90	14.00	17.58	17.40
40	23.90	19.00	22.58	22.40
50	28.90	24.00	27.58	27.40
60	33.90	29.00	32.58	32.40
64	35.90	31.00	34.58	34.40
70	38.90	34.00	37.58	37.40
80	43.90	39.00	42.58	42.40
84	45.90	41.00	44.58	44.40
90	48.90	44.00	47.58	47.40
100	53.90	49.00	52.58	52.40
110	58.90	54.00	57.58	57.40
120	63.90	59.00	62.58	62.40

RSMEZ M 100 - 2 XX V 10 G30 T

系列 公端 间距 排数 针芯数 垂直 合高 镀金 卷带
 贴装 30u" 包装



Recommended PC board pattern
 (TOP VIEW)



①	修改摘要	姓名	日期	版本
修改	DESCRIPTION	SIGNATURE	DATE	REV
			21.08.25	B

巴晨万欣

制图 (DWG):	品名 (TITLE):	1.0mm BTB PLUG		
审核 (CHKD):	料号 (PART NO.):	RSMEZM100-2XXV10G30T		
数量 (QTY):	比例 (SCALE):	单位 (UNIT):	张数 (SHEET):	图幅 (SIZE):
	1:1	mm	1 OF 1	A4