

Product data sheet

Connectors for medical applications

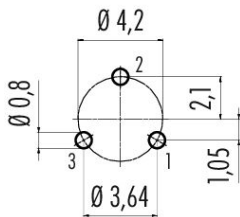


Product description	Snap-In Male panel mount connector, Contacts: 3, unshielded, THT, IP67
Area	series 620
Part no.	99 9207 490 03

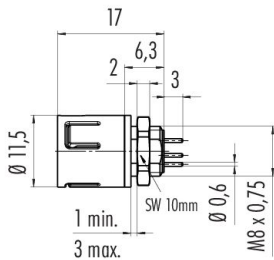
Illustration



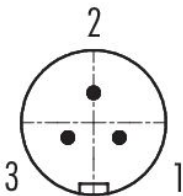
Conductor layout



Scale drawing



Contact arrangement (Plug-in side)



You can find the component part drawing and assembly instructions on the next page.

Technical data

General features

Part no.	99 9207 490 03
Connector design	Male panel mount connector
Version	Connector pin straight
Connector locking system	snap-in
Termination	THT
Degree of protection	IP67
Temperature range from/to	-25 °C / 85 °C

Product data sheet

Connectors for medical applications



Product description **Snap-In Male panel mount connector, Contacts: 3, unshielded, THT, IP67**

Area **series 620**
Part no. **99 9207 490 03**

Mechanical operation	> 500 Mating cycles
Weight (g)	1.87
Customs tariff number	85369010
Country of Origin	DE

Electrical parameters

Rated voltage	125 V
Rated impulse voltage	1500 V
Rated current	3,0 A
Insulation resistance	$\geq 10^{10} \Omega$
Pollution degree	2
Overvoltage category	II
Insulating material group	II
EMC compliance	unshielded

Material

Housing material	PA
Contact body material	PA (UL94 HB) grey
Contact material	CuZn (brass)
Contact plating	Au (gold)
REACH SVHC	CAS 7439-92-1 (Lead)
SCIP number	b39d3b40-7233-440b-ba77-fd2c1b4ad5d1

Classifications

eCl@ss 11.1	27-44-01-02
ETIM 9.0	EC002635

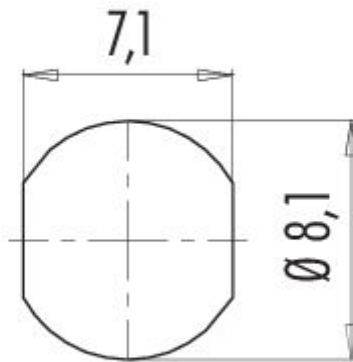
Product data sheet

Connectors for medical applications



Product description	Snap-In Male panel mount connector, Contacts: 3, unshielded, THT, IP67
Area	series 620
Part no.	99 9207 490 03

Assembly instructions / Panel cut-out



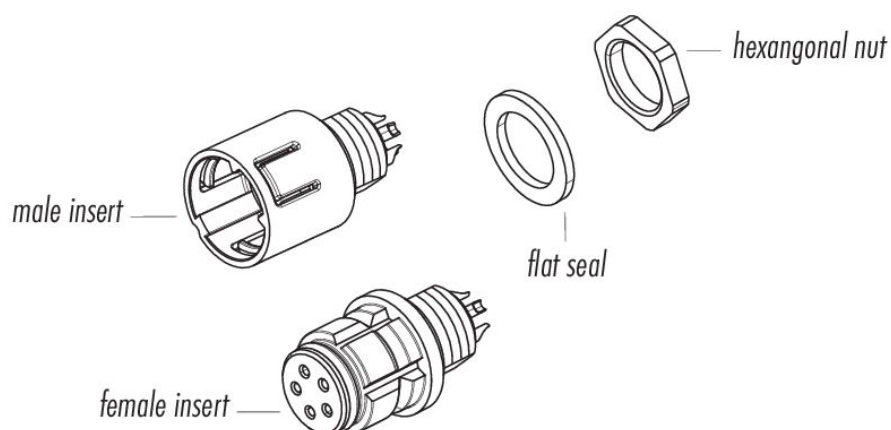
Product data sheet

Connectors for medical applications



Product description	Snap-In Male panel mount connector, Contacts: 3, unshielded, THT, IP67
Area	series 620
Part no.	99 9207 490 03

Component part drawing



Product data sheet

Connectors for medical applications



Product description	Snap-In Male panel mount connector, Contacts: 3, unshielded, THT, IP67
Area	series 620
Part no.	99 9207 490 03

Security notices

The connector must not be plugged or unplugged under load. Non-observance and improper use can result in personal injury.

The connectors have been developed for applications in plant engineering, control and electrical equipment construction. The user is responsible for checking whether the connectors can also be used in other areas of application.

Connectors which are used in circuits with voltages dangerous to the touch may only be installed and used by, or under the supervision of, persons with electrical engineering training, taking into account the applicable regulations and standards.

The user must take suitable safety precautions to ensure that the connector cannot be accidentally disconnected.

Plug connectors with enclosure protection IP67 and IP68 are not suitable for use under water. When used outdoors, the plug connectors must be protected separately against corrosion. For further information on the IP protection classes, please refer to the "Technical Information" download centre.

The plug connector is not suitable for mains voltages Please observe the pollution degree and the overvoltage category. For further information, please refer to the download center "Technical Information".