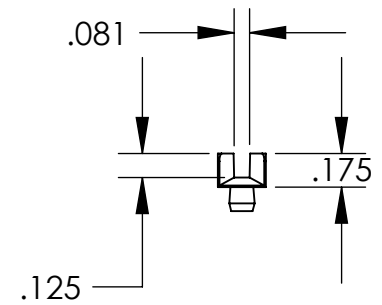
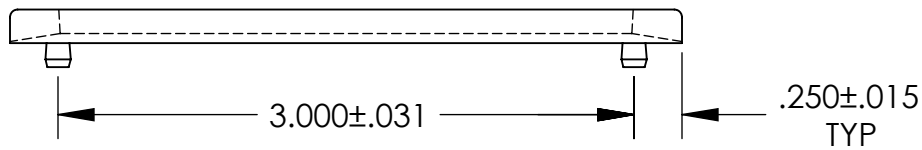
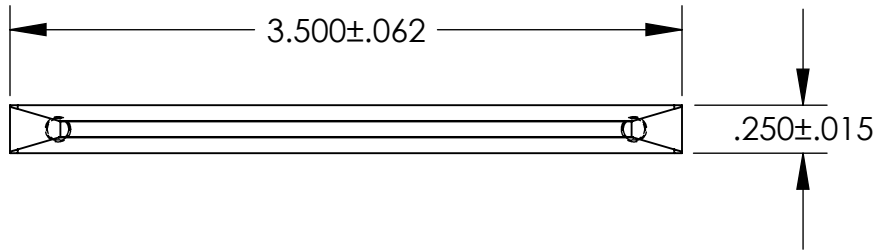


UNCONTROLLED DOCUMENT



NOTES:
 THE PCB CARD GUIDE IS DESIGNED TO FIT A $.125 +.003/-.001$ FRONT
 DIAMETER HOLE AND A $.120 \pm .005 \times .218$ SLOT REAR HOLE

TOLERANCES UNLESS NOTED

- $\pm .005$ ON DIMENSIONS THRU $.625$
- $\pm .008$ ON DIMENSIONS $.626$ THRU 1.000
- $\pm .010$ ON DIMENSIONS 1.001 THRU 1.500
- $\pm .015$ ON DIMENSIONS LARGER THAN 1.500
- $\pm .015$ ON FRACTIONAL DIMENSIONS

WE RESERVE THE RIGHT
 TO DISCONTINUE ITEMS,
 CHANGE SPECIFICATIONS
 OR DESIGN AT ANY TIME
 WITHOUT NOTICE AND
 WITHOUT INCURRING
 ANY OBLIGATIONS

PROPERTY OF
MICRO PLASTICS INC.

CATALOG DRAWING
 NYLON PCB CARD GUIDES
 MICRO P/N 21CGS00350
 DWG. # 21CGS00350
 FILE SERVER\ENG\WEB

MATERIAL: NYLON 6/6

| | | |
|------|--------------|-----------|
| DATE | SCALE 1:1 | SD |
|------|--------------|-----------|