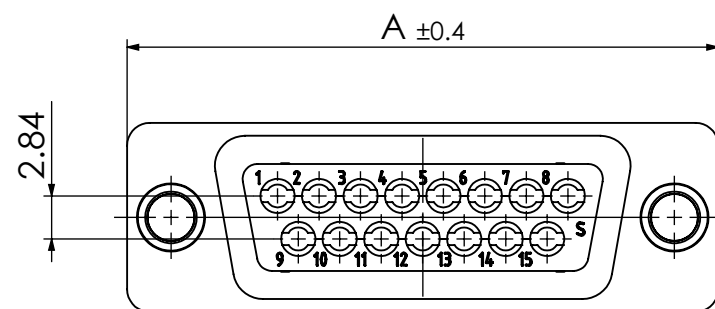
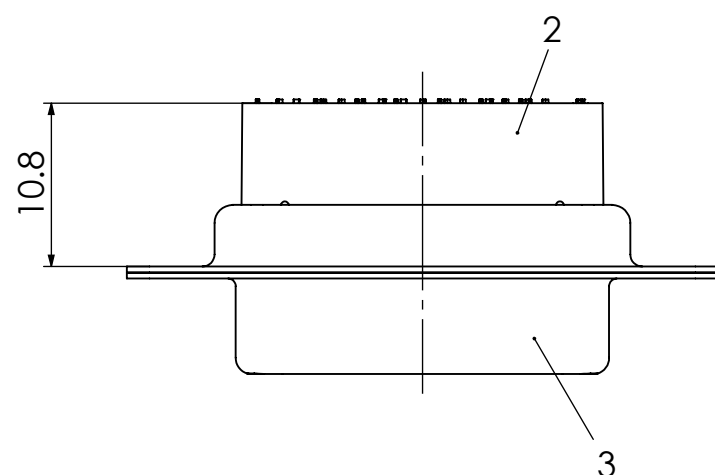
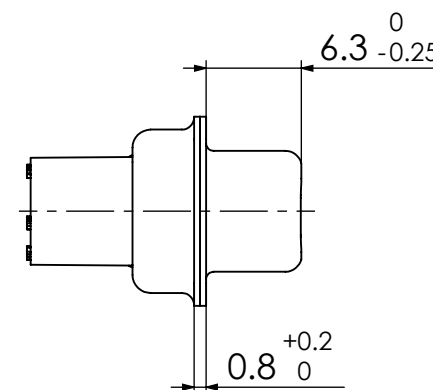
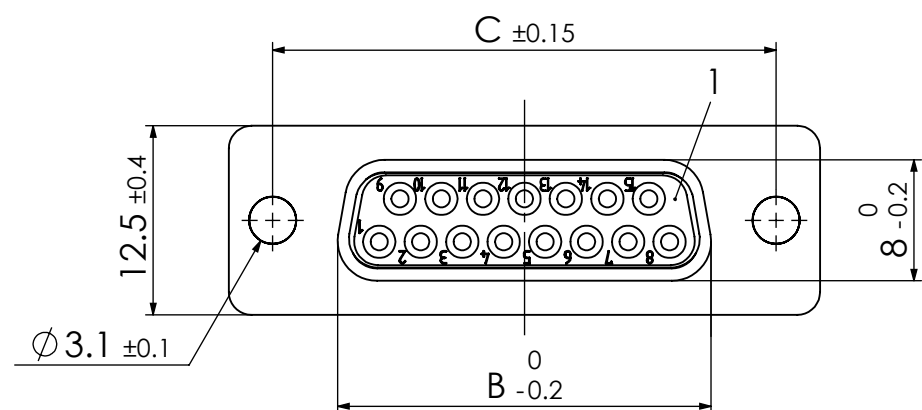


RoHS compliant



FLxx*)S7-0528

e.g. FL09S7-0528

*) xx No. of contacts 09, 15, 25 or 37

MATERIAL NUMBER	xx *)	A [mm]	B [mm]	C [mm]
1731092250	09	30.8	16.4	25
-	15	39.1	24.7	33.3
-	25	53	38.5	47.04
-	37	69.3	54.9	63.5

Crimp contacts S7LR-K176 (AWG 20-24/0,8µm Au) included in delivery.
Loose parts and connector packed together in a bag.

No.	St.	Part	Type Description/Material	Surface plating/Colour/Class
3	1	Shell	Steel	tin plated
2	1	Insulator rear part	PA (-55°C to +115°C)	black
1	1	Insulator front part	PBT acc. UL94V-0	black

COMMENT: ALL RIGHTS ARE RESERVED BY US FOR THIS DRAWING. WITHOUT OUR PRIOR CONSENT, IT MAY NEITHER BE DUPLICATED NOR MADE AVAILABLE TO A THIRD PARTY. AND IT ALSO MAY NOT BE IMPROPERLY USED BY THE RECEIVER, OR A THIRD PARTY.

FUNCTIONAL SYMBOLS ▽ = 0 ▽ = 0 ▽ = 0		THIS DRAWING CONTAINS INFORMATION THAT IS PROPRIETARY TO MOLEX ELECTRONIC TECHNOLOGIES, LLC AND SHOULD NOT BE USED WITHOUT WRITTEN PERMISSION			
DIMENSION UNITS mm	SCALE 2:1	MEASUREMENTS WITHOUT TOLERANCE ACC. TO ISO 2768-mK			
REV. 5 CH.-NO. 24410	REV. 4 CH.-NO. 23482	REV. 3 CH.-NO. 23123	REV. 2 CH.-NO. 21782	CURRENT REVISION DRWN: DRAWN BY msteinbrueck 12-02-2024 APPR: APPR BY mteubel 20-02-2024	PRODUCT CUSTOMER DRAWING MATERIAL NUMBER see table
REV. 1 CH.-NO. 23123	REV. 0 CH.-NO. 21782	INITIAL REVISION DRWN: DRAWN BY sschref 13-09-2006 APPR: APPR BY ADenzinger 13-09-2006		REVISION 5	
REPLACEMENT FOR: 1731092250_Rev. A		FIRST ANGLE PROJECTION 	DRAWING A3-SIZE	DOCUMENT NUMBER FLxxS7-0528	CUSTOMER GENERAL MARKET
				SHEET NUMBER 1 OF 1	