

A 50 -40 - Ferrule

3241240

<https://www.phoenixcontact.com/us/products/3241240>



Please be informed that the data shown in this PDF document is generated from our online catalog. Please find the complete data in the user documentation. Our general terms of use for downloads are valid.

Ferrule, Length contact range: 40 mm, sleeve length: 40 mm, color: silver



Your advantages

- The insulation reliability of close connections is increased and the splicing of wires is prevented

Commercial data

Item number	3241240
Packing unit	100 pc
Minimum order quantity	100 pc
Sales key	BH34
Product key	BH3412
Catalog page	Page 480 (C-3-2019)
GTIN	4046356908139
Weight per piece (including packing)	3.6 g
Weight per piece (excluding packing)	3.63 g
Customs tariff number	85369010
Country of origin	DE

A 50 -40 - Ferrule

3241240

<https://www.phoenixcontact.com/us/products/3241240>



Technical data

Notes

General	These ferrules are not included in DIN 46228-1: 1992-08
---------	---

Product properties

Product type	Cable end sleeve
Conductor category	stranded conductors, class 2, 5, 6 / B, C, K, M

Data management status

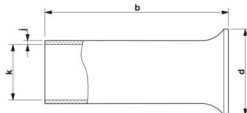
Article revision	01
------------------	----

Connection data

Conductor connection

Conductor cross section flexible max.	50 mm ²
Conductor cross section AWG max.	1/0
Stripping length	40 mm

Dimensions

Dimensional drawing	
Sleeve length	40 mm
Length contact range	40 mm
Maximum stripping length	40 mm
Ferrule diameter	10.3 mm
Sleeve wall thickness	0.3 mm
Inner dimensions of the insulating collar	13 mm

Material specifications

Color	silver-colored
Material	CU-DHP
Coating	tin-plated (galvanic)
Surface characteristics	Tin-plated

Mechanical properties

Technical data

Sleeve length	40 mm
---------------	-------

Environmental and real-life conditions

Ambient conditions

A 50 -40 - Ferrule

3241240

<https://www.phoenixcontact.com/us/products/3241240>



Permanent temperature	105 °C
Short-term temperature	120 °C

A 50 -40 - Ferrule

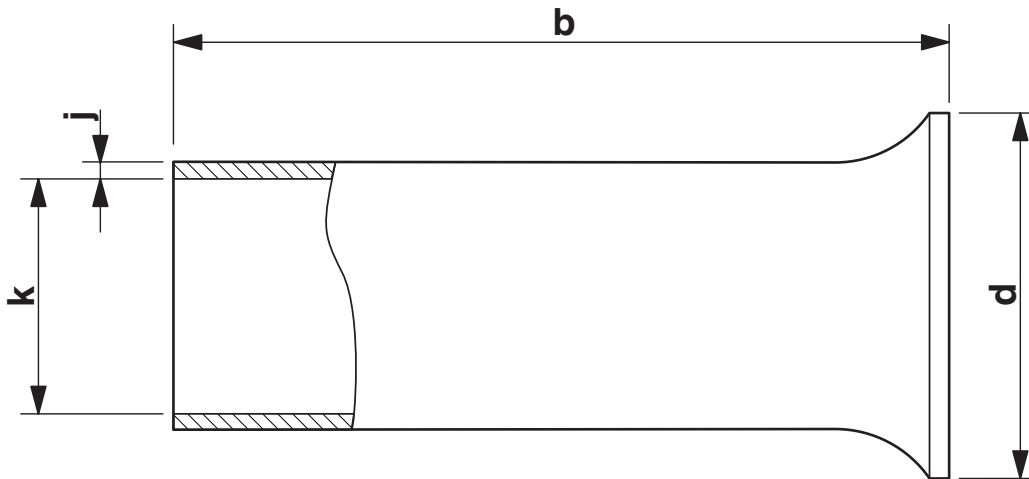
3241240

<https://www.phoenixcontact.com/us/products/3241240>



Drawings

Dimensional drawing



Sleeve length (b), insulating collar inner dimension (d), sleeve diameter (k), sleeve wall thickness (j)

A 50 -40 - Ferrule

3241240

<https://www.phoenixcontact.com/us/products/3241240>



Classifications

ECLASS

ECLASS-11.0	27400201
ECLASS-12.0	27400201
ECLASS-13.0	27400201

ETIM

ETIM 9.0	EC000005
----------	----------

UNSPSC

UNSPSC 21.0	27121700
-------------	----------

A 50 -40 - Ferrule

3241240

<https://www.phoenixcontact.com/us/products/3241240>



Environmental product compliance

EU RoHS

Fulfills EU RoHS substance requirements	Yes, No exemptions
---	--------------------

China RoHS

Environment friendly use period (EFUP)	EFUP-E
	No hazardous substances above the limits

EU REACH SVHC

REACH candidate substance (CAS No.)	No substance above 0.1 wt%
-------------------------------------	----------------------------

Phoenix Contact 2024 © - all rights reserved
<https://www.phoenixcontact.com>

Phoenix Contact USA
586 Fulling Mill Road
Middletown, PA 17057, United States
(+717) 944-1300
info@phoenixcon.com