

## 3M™ Electrically Conductive Connector Covers 4270 Series

### Conductive Composite

Connector Covers 4270 Series are permanently volume conductive and free of carbon black particulate. The Connector Covers 4270 Series do not leave black marks and are more suited to clean situations. Meets the requirements of NASM5501 31/32.

### Noncorrosive

Connector Covers 4270 Series are noncorrosive and produce no visible corrosion when tested to Federal Test Method 101C using Kovar test plates.

### Conformability

The material used in the covers were also selected for its resilience. Properly sized, the covers provide a snug, secure fit. This helps keep connectors clean and prevents the cover from accidentally falling off.



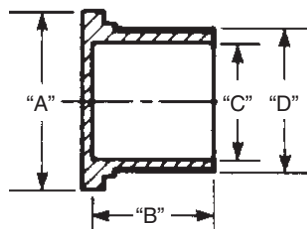
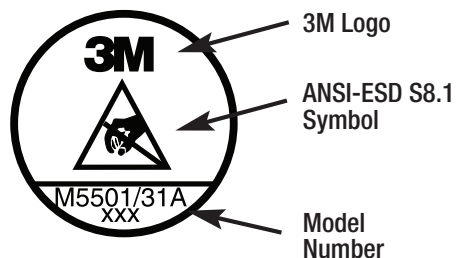
Material Properties	Test Method	Typical Value
Resistivity	ASTM D991	<10 <sup>5</sup> ohm-cm
Contact Corrosivity	FTM 101C Metod 3005 (Kovar plate)	Pass
Crayoning	3M	Not visible
Elongation	ASTM D638	24%
Tensile	ASTM D638	2700 psi
Vicat Softening	ASTM MD 1525	85° C
Outgassing	ASTM E595	Pass
Chemical Susceptibility*	Reactions	
Dilute Acids	Slight Attack	
Dilute Alkalines	Slight Attack	
Concentrated Acids	Slight Attack	
Concentrated Alkalines	Slight Attack	
Methanol, Ethanol, and Isopropanol	Resistant	
Hydrocarbons	Slight Attack	
Ketones	Slight Attack	
Oil and Gasoline	Slight Attack	

\*ASTM F925

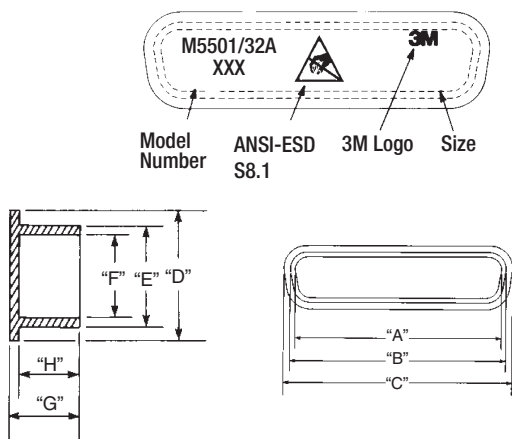
## 3M™ Circular Connector Covers 4270 Series

Product Description	Old Prod. Desc.	"A"	"B"	"C"	"D"
<b>Packaged 100/bag; 10 bags/box</b>					
4270 M5501-31A-250	4270-4R	.670	.500	.250	.336
4270 M5501/31A-313	4270-5R	.670	.500	.313	.399
4270 M5501/31A-375	4270-6R	.670	.500	.375	.461
4270 M5501/31A-413	4270-8Y	.670	.625	.413	.483
4270 M5501/31A-480	4270-8R	.740	.500	.480	.540
4270 M5501/31A-500	4270-9R	.750	.500	.500	.586
4270 M5501/31A-530	4270-10Y	.750	.625	.530	.595
4270 M5501/31A-605	4270-10R	.840	.500	.605	.665
4270 M5501/31A-655	4270-12Y	.860	.625	.655	.715
4270 M5501/31A-720	4270-12R	.970	.500	.720	.755
4270 M5501/31A-785	4270-14Y	1.031	.625	.785	.845
4270 M5501/31A-850	4270-14R	1.125	.500	.850	.905
4270 M5501/31A-893	4270-16Y	1.125	.625	.893	.963
4270 M5501/31A-973	4270-16R	1.220	.500	.973	1.035
4270 M5501/31A-1028	4270-18Y	1.250	.625	1.28	1.088
4270 M5501/31A-1093	4270-18R	1.330	.562	1.093	1.155
4270 M5501/31A-1125	4270-19R	1.400	.562	1.125	1.213

Product Description	Old Prod. Desc.	"A"	"B"	"C"	"D"
<b>Packaged 50/bag; 10 bags/box</b>					
4270 M5501/31A-1150	4270-20Y	1.406	.625	1.150	1.215
4270 M5501/31A-1231	4270-20R	1.465	.562	1.231	1.301
4270 M5501/31A-1270	4270-22Y	1.500	.625	1.270	1.340
4270 M5501/31A-1340	4270-22R	1.590	.562	1.340	1.410
4270 M5501/31A-1390	4270-24Y	1.640	.625	1.390	1.460
4270 M5501/31A-1463	4270-24R	1.700	.562	1.463	1.533
4270 M5501/31A-1540	4270-25Y	1.810	.625	1.540	1.580
4270 M5501/31A-1645	4270-28Y	1.875	.625	1.645	1.718
4270 M5501/31A-1715	4270-28R	1.950	.562	1.715	1.790
<b>Packaged 25/bag; 10 bags/box</b>					
4270 M5501/31A-1890	4270-32Y	2.125	.625	1.890	1.970
4270 M5501/31A-1965	4270-32R	2.220	.562	1.965	2.040
4270 M5501/31A-2140	4270-36Y	2.340	.625	2.140	2.210
4270 M5501/31A-2215	4270-36R	2.435	.600	2.215	2.290
4270 M5501/31A-2960	4270-48R	3.225	.600	2.960	3.050



## 3M™ Connector Covers, Type “D”, 4270 Series



Product Description	Old Prod. Desc.	“A”	“B”	“C”	“D”	“E”	“F”	“G”	“H”
<b>Nominal Dimensions Packaged 100/bag; 10 bags/box</b>									
4272 M5501/32A-50P	4272-50P	2.112	2.179	2.279	.636	.536	.469	.280	.240
4272 M5501/32A-50S	4272-50S	2.049	2.116	2.216	.574	.474	.407	.280	.240
4272 M5501/32A-37P	4272-37P	2.216	2.283	2.383	.530	.430	.363	.280	.240
4272 M5501/32A-37S	4272-37S	2.143	2.210	2.310	.462	.362	.295	.280	.240
4272 M5501/32A-25P	4272-25P	1.586	1.635	1.735	.530	.430	.363	.280	.240
4272 M5501/32A-25S	4272-25S	1.495	1.562	1.662	.462	.362	.295	.280	.240
4272 M5501/32A-15P	4272-15P	1.040	1.107	1.177	.512	.436	.369	.280	.240
4272 M5501/32A-15S	4272-15S	.955	1.022	1.122	.462	.362	.295	.280	.240
4272 M5501/32A-9P	4272-9P	.708	.775	.849	.512	.434	.367	.280	.240
4272 M5501/32A-9S	4272-9S	.627	.694	.794	.462	.362	.295	.280	.240

3M is a trademark of 3M Company. All other trademarks are owned by their respective companies.

### Important Notice

All statements, technical information, and recommendations related to 3M’s products are based on information believed to be reliable, but the accuracy or completeness is not guaranteed. Before using this product, you must evaluate it and determine if it is suitable for your intended application. You assume all risks and liability associated with such use. Any statements related to the product which are not contained in 3M’s current publications, or any contrary statements contained on your purchase order shall have no force or effect unless expressly agreed upon, in writing, by an authorized officer of 3M.

### Warranty; Limited Remedy; Limited Liability.

This product will be free from defects in material and manufacture for one year from the time of purchase. **3M MAKES NO OTHER WARRANTIES INCLUDING, BUT NOT LIMITED TO, ANY IMPLIED WARRANTY OF MERCHANTABILITY OR FITNESS FOR A PARTICULAR PURPOSE.** If this product is defective within the warranty period stated above, your exclusive remedy shall be, at 3M’s option, to replace or repair the 3M product or refund the purchase price of the 3M product. **Except where prohibited by law, 3M will not be liable for any indirect, special, incidental or consequential loss or damage arising from this 3M product, regardless of the legal theory asserted.**



### Electronics Materials Solutions Division Static Control Products

926 JR Industrial Drive  
Sanford, NC 27332-9733  
Toll-Free: 866-722-3736  
International: 919-718-0000  
Email: 3mstaticinfo@mmm.com  
www.3mstatic.com

Please recycle. Printed in USA.  
© 3M 2014. All rights reserved.  
78-9102-1468-9 JHA

# Mouser Electronics

Authorized Distributor

Click to View Pricing, Inventory, Delivery & Lifecycle Information:

## SCS:

[4270-6R](#) [4270-8R](#) [4270-24R](#) [4270-25Y](#) [4270-28Y](#) [4270-12Y](#) [4270-20R](#) [4270-14Y](#) [4270-16Y](#) [4270-8Y](#) [4270-12R](#)  
[4270-22Y](#) [4270-16R](#) [4270-24Y](#) [4270-14R](#) [4270-18Y](#) [4270-10Y](#) [4270-22R](#) [4270-18R](#) [4270-10R](#) [4270-19R](#) [4270-](#)  
[28R](#) [4270-32R](#) [4270-32Y](#) [4270-36R](#) [4270-36Y](#) [4270-4R](#) [4270-5R](#) [4270-9R](#) [4272-15P](#) [4272-15S](#) [4272-25P](#) [4272-](#)  
[25S](#) [4272-37P](#) [4272-50P](#) [4272-50S](#) [4272-9P](#) [4272-9S](#) [4272-37S](#)