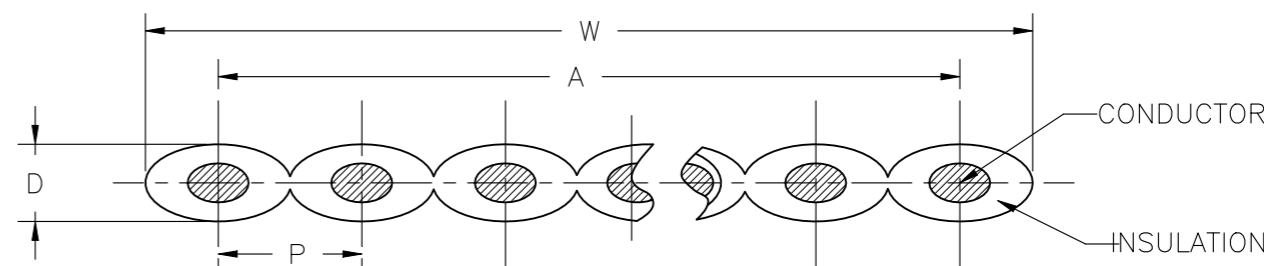


REVISIONS

P	LTR	DESCRIPTION	DATE	DWN	APVD
	A1	ECR-22-127323	21JAN2022	LP	AVZ

PART NUMBER	NO OF COND	CONDUCTOR CONSTRUCTION	PITCH(mm)	AVERAGE THICKNESS(mm)	MINIMUM THICKNESS(mm)	" A" mm	DIAMETER	
							D	W
2385133-1	4	7/0.127±0.008	1.27±0.05	0.23	0.18	3.81±0.10	0.93±0.05	5.08±0.10
2385133-2	6	7/0.127±0.008	1.27±0.05	0.23	0.18	6.35±0.15	0.93±0.05	7.62±0.15
2385133-3	8	7/0.127±0.008	1.27±0.05	0.23	0.18	8.89±0.15	0.93±0.05	10.16±0.15
2385133-4	9	7/0.127±0.008	1.27±0.05	0.23	0.18	10.16±0.20	0.93±0.05	11.43±0.20
2385133-5	10	7/0.127±0.008	1.27±0.05	0.23	0.18	11.43±0.20	0.93±0.05	12.70±0.20
2385133-6	12	7/0.127±0.008	1.27±0.05	0.23	0.18	13.97±0.20	0.93±0.05	15.24±0.20
2385133-7	14	7/0.127±0.008	1.27±0.05	0.23	0.18	16.51±0.20	0.93±0.05	17.78±0.20
2385133-8	15	7/0.127±0.008	1.27±0.05	0.23	0.18	17.78±0.20	0.93±0.05	19.05±0.20
2385133-9	16	7/0.127±0.008	1.27±0.05	0.23	0.18	19.05±0.20	0.93±0.05	20.32±0.20
1-2385133-0	18	7/0.127±0.008	1.27±0.05	0.23	0.18	21.59±0.20	0.93±0.05	22.86±0.20
1-2385133-1	20	7/0.127±0.008	1.27±0.05	0.23	0.18	24.13±0.20	0.93±0.05	25.40±0.20
1-2385133-2	24	7/0.127±0.008	1.27±0.05	0.23	0.18	29.21±0.25	0.93±0.05	30.48±0.25
1-2385133-3	25	7/0.127±0.008	1.27±0.05	0.23	0.18	30.48±0.25	0.93±0.05	31.75±0.25
1-2385133-4	26	7/0.127±0.008	1.27±0.05	0.23	0.18	31.75±0.25	0.93±0.05	33.02±0.25
1-2385133-5	34	7/0.127±0.008	1.27±0.05	0.23	0.18	41.91±0.30	0.93±0.05	43.18±0.30
1-2385133-6	37	7/0.127±0.008	1.27±0.05	0.23	0.18	45.72±0.30	0.93±0.05	46.99±0.30
1-2385133-7	40	7/0.127±0.008	1.27±0.05	0.23	0.18	49.53±0.30	0.93±0.05	50.80±0.30
1-2385133-8	50	7/0.127±0.008	1.27±0.05	0.23	0.18	62.23±0.40	0.93±0.05	63.50±0.40
1-2385133-9	60	7/0.127±0.008	1.27±0.05	0.23	0.18	74.93±0.40	0.93±0.05	76.20±0.40
2-2385133-0	64	7/0.127±0.008	1.27±0.05	0.23	0.18	80.01±0.50	0.93±0.05	81.28±0.50

MECHANICAL CHARACTERISTICS		
CONDUCTOR RESISTANCE (at 20°C, Max)'Ω/km	28AWG	
BEFORE AGING	TENSIL STRENGTH (Mpa)	≥10.3
	ELONGATION (%)	≥100
AFTER AGING	TENSIL STRENGTH (Mpa)	70% UNAGED Min(136±2.0°CX168H)
	ELONGATION (%)	65% UNAGED Min(136±2.0°CX168H)
COLD BEND TEST	NO CRACKS (-10°C±2°CX4H)	
DEFORMATION TEST	Max 0.50(136°C±1°CX1H)	
ELECTRICAL CHARACTERISTICS		
IMPEDANCE	155~179'Ω	
CAPACITANCE	11.2pf/FT	
PROPAGATION	2.3ns/FT	



TEMPERATURE RATING	105°C	DIELECTRIC STRENGTH	AC 2000V
VOLTAGE RATING	300V	FLAME TEST	VW-1
UL STYLE	2651	STANDARD	UL758
CSA	C22.2No.210.2	INSULATION	PVC(GRAY)
CONDUCTOR	TINNED STRANDED COPPER	INSULATION CONDUCTOR*1	PVC(REDF)

THIS DRAWING IS A CONTROLLED DOCUMENT.

DWN	LINGANATHAN.P	08JUL2021	 TE Connectivity	NAME FLAT RIBBONCABLE, AWG28, UL2651					
CHK	A.V.ZANDVOORT	08JUL2021							
APVD	A.V.ZANDVOORT	08JUL2021							
PRODUCT SPEC									
APPLICATION SPEC			SIZE	CAGE CODE	DRAWING NO	RESTRICTED TO			
			A3	00779	C-2385133				
MATERIAL			WEIGHT	CUSTOMER DRAWING			SCALE	SHEET	REV
							NTS	1 OF 1	A1