

- NOTES:
- MATERIALS:
HOUSING : GLASS-FILLED LIQUID CRYSTAL POLYMER, UL RATED 94V-0
COLOR: BEIGE
PINS: BRASS ALLOY, C26000
 - PLATING: 2.54µM MIN. TIN OVER 1.27µM MIN. NICKEL EXCEPT AT CUT-EDGE WHERE THICKNESS CAN BE 1.90µM MIN.
 - CUT-EDGE TIN MEASUREMENT POINT.
 - DRAWING SHOWS PLUG WITH 5 CIRCUITS.
 - HEADER TO BE USED WITH CRIMP HOUSING, P/N 87439 AND CRIMP TERMINAL, P/N 87421
 - PRODUCT SPEC. PS-78047-001 APPLIES.

GENERAL TOLERANCES (UNLESS SPECIFIED)		mm	NTS
10 UNDER		± 0.20	
10 OVER	30 UNDER	± 0.20	
30 OVER		± 0.20	
ANGULAR		± 3 °	
DRAFT WHERE APPLICABLE MUST REMAIN WITHIN DIMENSIONS			

THIS DRAWING CONTAINS INFORMATION THAT IS PROPRIETARY TO MOLEX ELECTRONIC TECHNOLOGIES, LLC AND SHOULD NOT BE USED WITHOUT WRITTEN PERMISSION									
DIMENSION UNITS		SCALE		CURRENT REV DESC: REMOVED OBSOLETE PART NUMBERS AS PER PCN#515181					
mm		NTS		<p>molex</p> <p>HEADER, 1.50MM PITCH W-T-B, R/A, SMT</p> <p>PRODUCT CUSTOMER DRAWING</p> <p>DOCUMENT NUMBER: SD-78048-001 DOC TYPE: PSD DOC PART: 001 REVISION: C1</p> <p>MATERIAL NUMBER: SEE TABLE CUSTOMER: GENERAL MARKET SHEET NUMBER: 1 OF 3</p>					
GENERAL TOLERANCES (UNLESS SPECIFIED)									
ANGULAR TOL ± 3.0 °									
4 PLACES ± 0.2		EC NO: 794166							
3 PLACES ± 0.2		DRWN: VISHAH2 2024/06/04							
2 PLACES ± 0.2		CHK'D: GGA 2024/08/20							
1 PLACE ±		APPR: GGA 2024/08/20							
0 PLACES ±		INITIAL REVISION:							
DRAFT WHERE APPLICABLE MUST REMAIN WITHIN DIMENSIONS		DRWN: SKANG 2007/07/18							
THIRD ANGLE PROJECTION		APPR: MLONG 2007/07/25							
DRAWING		SERIES							
A3-SIZE		78048							

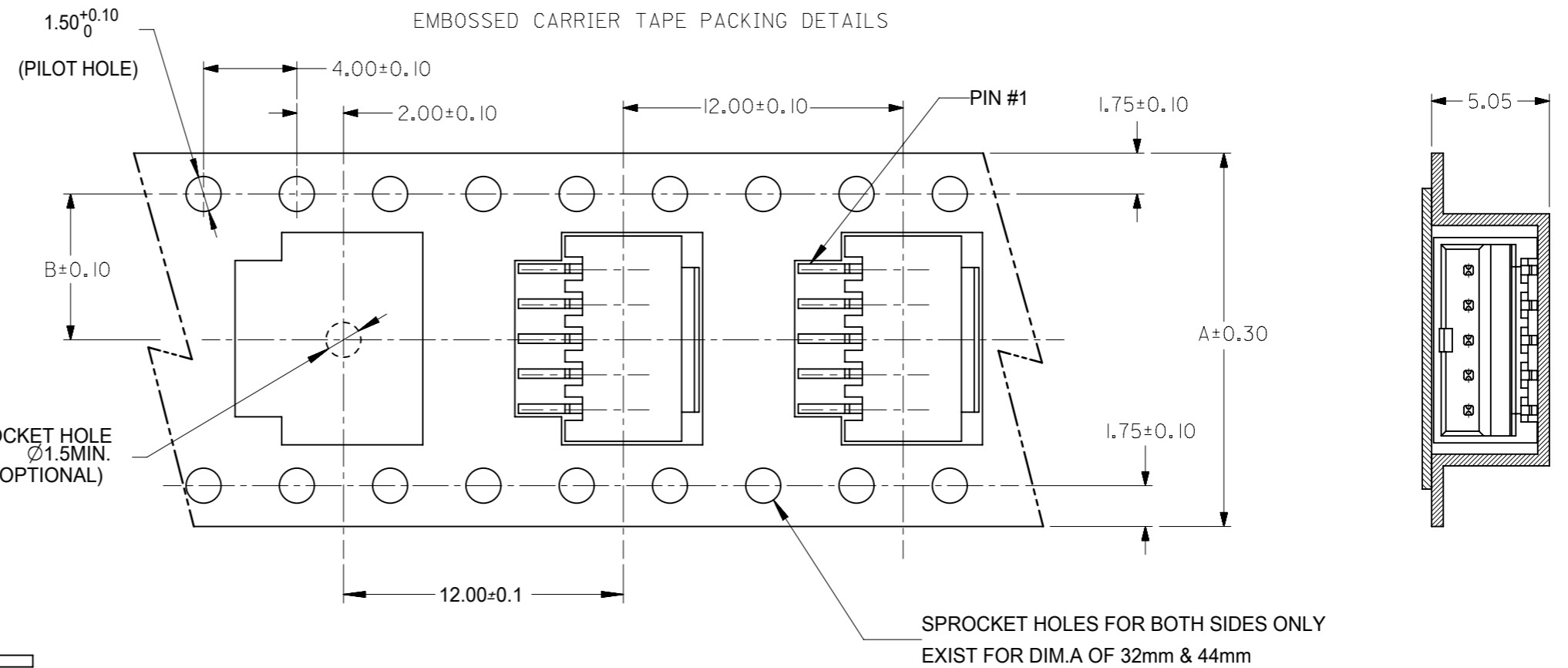
	10	9	8	7	6	5	4	3	2	1					
F							HOUSING COLOUR	HEADER IN TAPE & REEL (W/O HOLE)	STATUS	CKT SIZE	A	B	C	D	E
E							BIEGE	78048-0243	M	2	1.50	3.30	3.70	4.30	1.70
								78048-0343	M	3	3.00	4.80	5.20	5.80	3.20
								78048-0443	M	4	4.50	6.30	6.70	7.30	4.70
								78048-0543	M	5	6.00	7.80	8.20	8.80	6.20
								78048-0643	M	6	7.50	9.30	9.70	10.30	7.70
								78048-0743	M	7	9.00	10.80	11.20	11.80	9.20
								78048-0843	M	8	10.50	12.30	12.70	13.30	10.70
								78048-0943	M	9	12.00	13.80	14.20	14.80	12.20
								78048-1043	M	10	13.50	15.30	15.70	16.30	13.70
								78048-1143	M	11	15.00	16.80	17.20	17.80	15.20
								78048-1243	M	12	16.50	18.30	18.70	19.30	16.70
								78048-1343	M	13	18.00	19.80	20.20	20.80	18.20
								78048-1443	M	14	19.50	21.30	21.70	22.30	19.70
								78048-1543	M	15	21.00	22.80	23.20	23.80	21.20
D															
C															
B															
A															

NOTES:

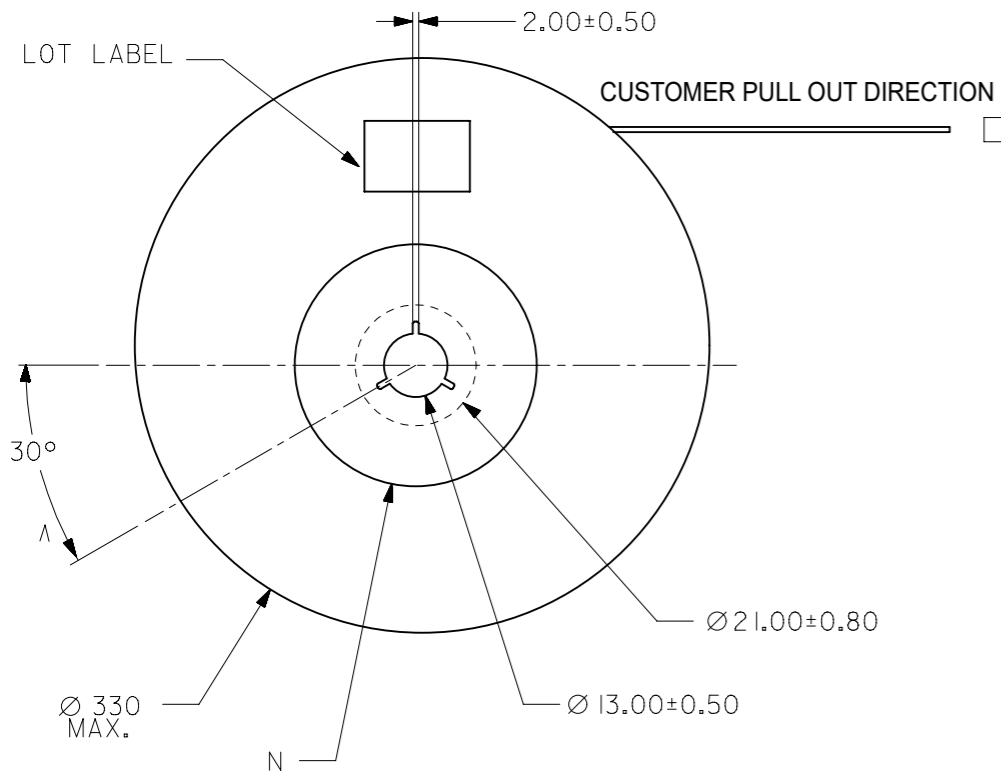
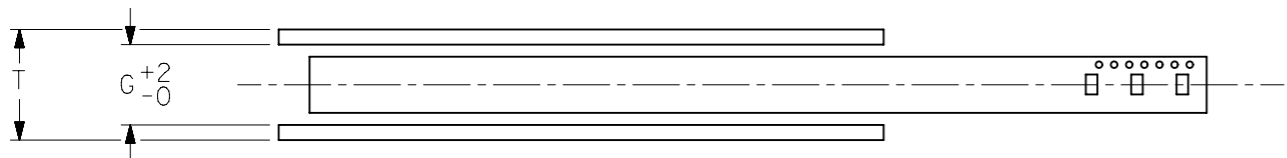
1 REFER SHEET 3 FOR EMBOSSED TAPE POCKET HOLE DETAIL & POSITION

THIS DRAWING CONTAINS INFORMATION THAT IS PROPRIETARY TO MOLEX ELECTRONIC TECHNOLOGIES, LLC AND SHOULD NOT BE USED WITHOUT WRITTEN PERMISSION													
GENERAL TOLERANCES (UNLESS SPECIFIED)		DIMENSION UNITS	SCALE	CURRENT REV DESC: REMOVED OBSOLETE PART NUMBERS AS PER PCN#515181									
		mm	NTS	EC NO: 794166 DRWN: VISHAH2 APPR: GGA INITIAL REVISION: DRWN: SKANG APPR: MLONG 2024/06/04 2024/08/20 2024/08/20 2007/07/18 2007/07/25									
10 UNDER		GENERAL TOLERANCES (UNLESS SPECIFIED)											
± 0.20		ANGULAR TOL ± 3.0 °											
10 OVER 30 UNDER		4 PLACES ± 0.2											
± 0.20		3 PLACES ± 0.2											
30 OVER		2 PLACES ± 0.2		2024/08/20									
± 0.20		1 PLACE ±		2007/07/18									
ANGULAR ± 3 °		0 PLACES ±		2007/07/25									
DRAFT WHERE APPLICABLE MUST REMAIN WITHIN DIMENSIONS				THIRD ANGLE PROJECTION		DRAWING		SERIES		MATERIAL NUMBER		CUSTOMER	
						A3-SIZE		78048		SEE TABLE		GENERAL MARKET	
DOCUMENT STATUS		P1	RELEASE DATE	2024/08/20 07:34:22		SD-78048-001		PSD		001		C1	
						2 OF 3							

10	15	44	20.20	100	44.40	50.40
	11, 12, 13, 14	32	14.20	100	32.40	38.40
	7, 8, 9, 10	24	11.50	100	24.40	30.40
	2, 3, 4, 5, 6	16	7.50	100	16.40	22.40
	CIRCUIT SIZE	A	B	N	G	T MAX

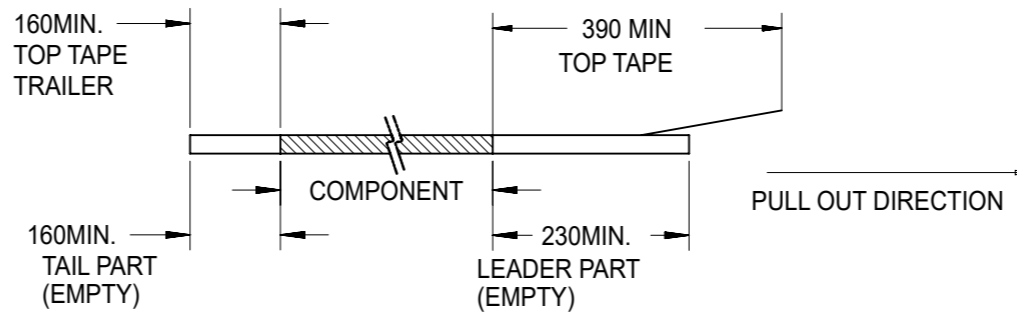


REEL DETAILS

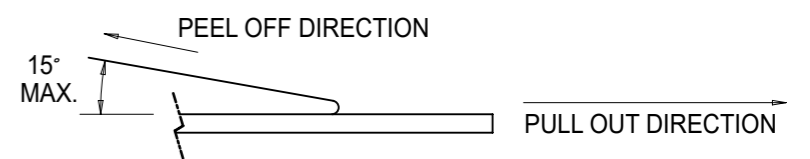


NOTES:

1. LEADER AND TRAILER TAPE



2. PEELING OFF FORCE OF THE TOP TAPE: 20-80gf.
(PEELING DIRECTION AS SHOWN IN FOLLOWING FIGURE)



- 3. PACKAGING STANDARD IS AS PER EIA-481.
- 4. TAPE & REEL QUANTITY = 1000PCS/REEL
- 5. THE TAPE IS TREATED FOR ANTI-STATIC

THIS DRAWING CONTAINS INFORMATION THAT IS PROPRIETARY TO MOLEX ELECTRONIC TECHNOLOGIES, LLC AND SHOULD NOT BE USED WITHOUT WRITTEN PERMISSION

GENERAL TOLERANCES (UNLESS SPECIFIED)		DIMENSION UNITS	SCALE
10 UNDER	± 0.20	mm	NTS
10 OVER 30 UNDER	± 0.20	GENERAL TOLERANCES (UNLESS SPECIFIED) ANGULAR TOL ± 3.0° 4 PLACES ± 0.2 3 PLACES ± 0.2 2 PLACES ± 0.2 1 PLACE ± 0 PLACES ±	
30 OVER	± 0.20		
ANGULAR	± 3°		
DRAFT WHERE APPLICABLE MUST REMAIN WITHIN DIMENSIONS			

CURRENT REV DESC: REMOVED OBSOLETE PART NUMBERS AS PER PCN#515181		EC NO: 794166	
DRWN: VISHAH2		2024/06/04	
CHK'D: GGA		2024/08/20	
APPR: GGA		2024/08/20	
INITIAL REVISION:		2007/07/18	
DRWN: SKANG		2007/07/25	
APPR: MLONG		2007/07/25	
THIRD ANGLE PROJECTION	DRAWING	SERIES	MATERIAL NUMBER
	A3-SIZE	78048	SEE TABLE

molex			
HEADER, 1.50MM PITCH W-T-B, R/A, SMT			
PRODUCT CUSTOMER DRAWING			
DOCUMENT NUMBER	DOC TYPE	DOC PART	REVISION
SD-78048-001	PSD	001	C1
CUSTOMER	SHEET NUMBER		
GENERAL MARKET	3 OF 3		