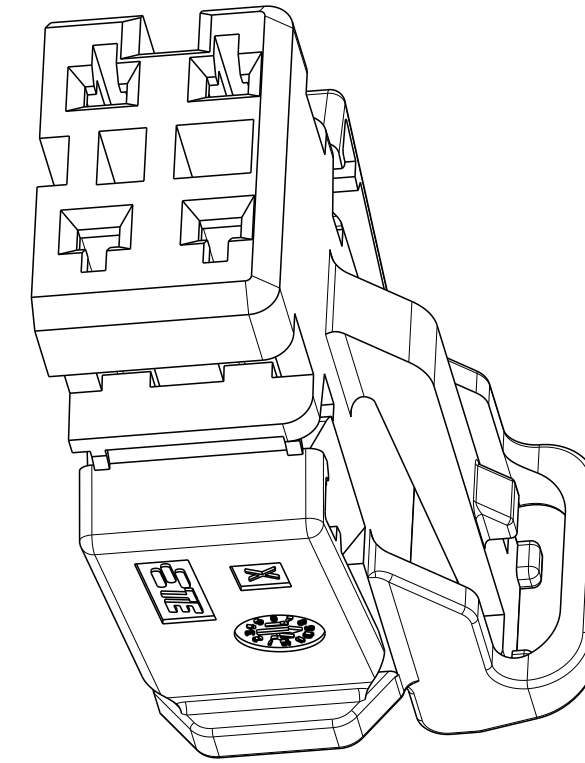
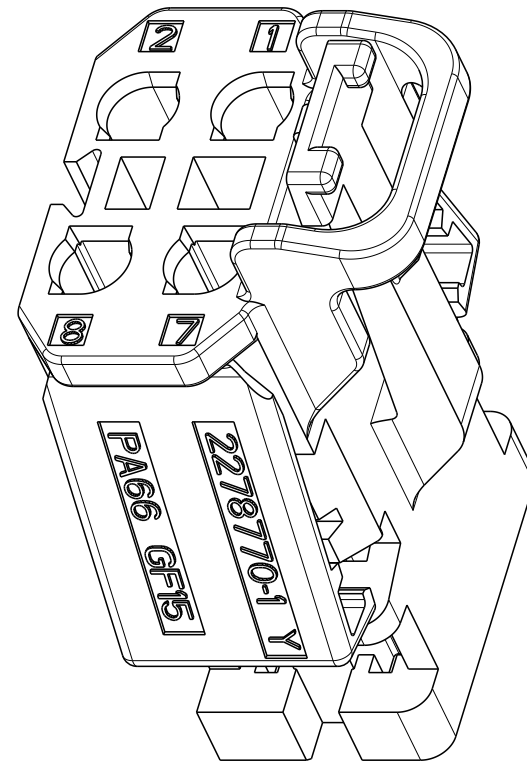
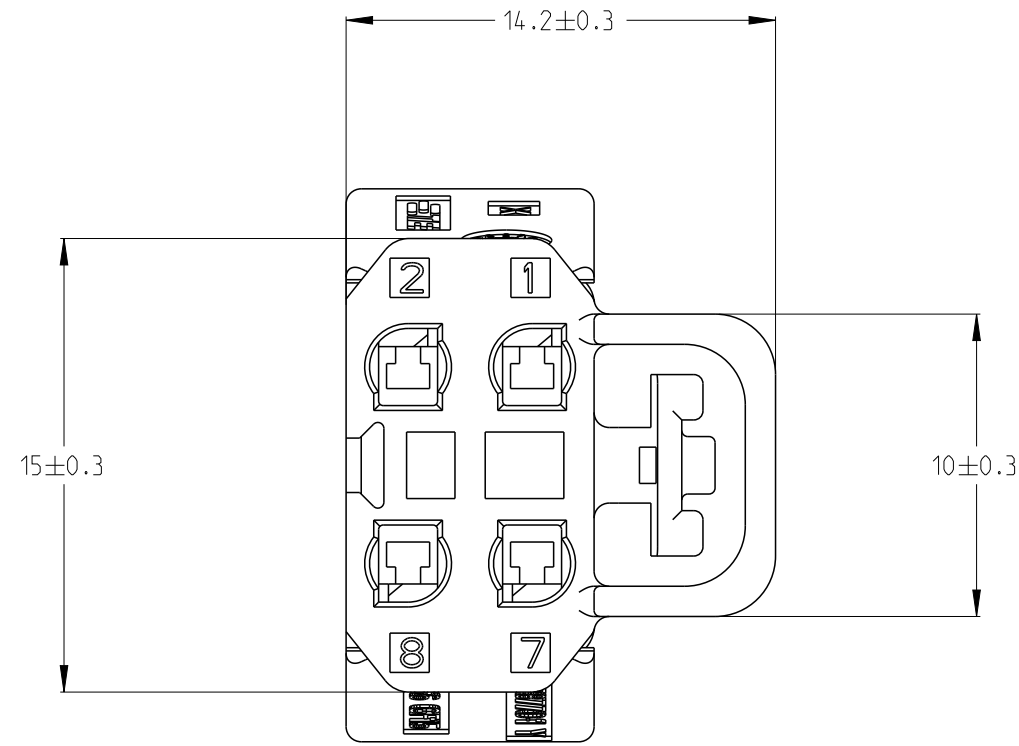
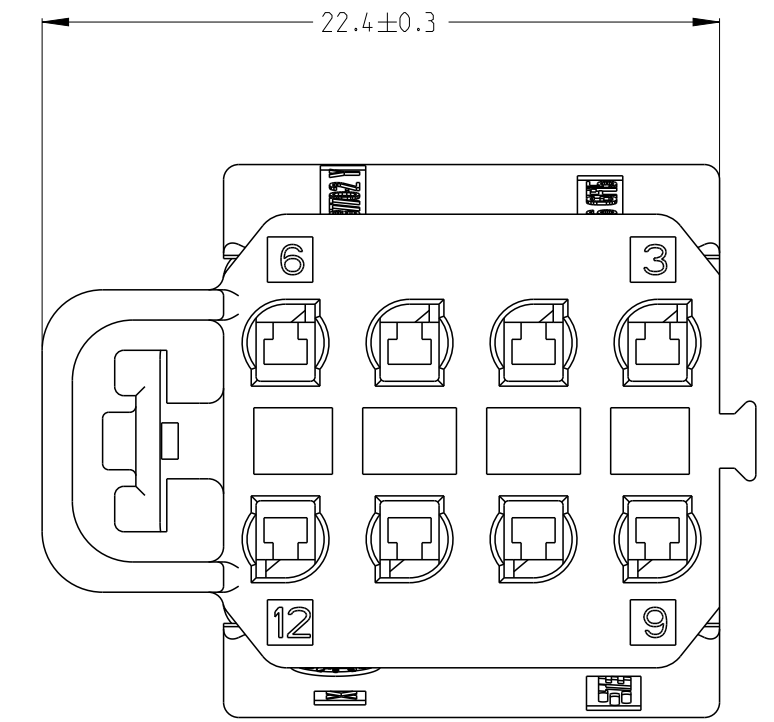


THIS DRAWING IS UNPUBLISHED. RELEASED FOR PUBLICATION 20  
 © COPYRIGHT 20 BY - ALL RIGHTS RESERVED.

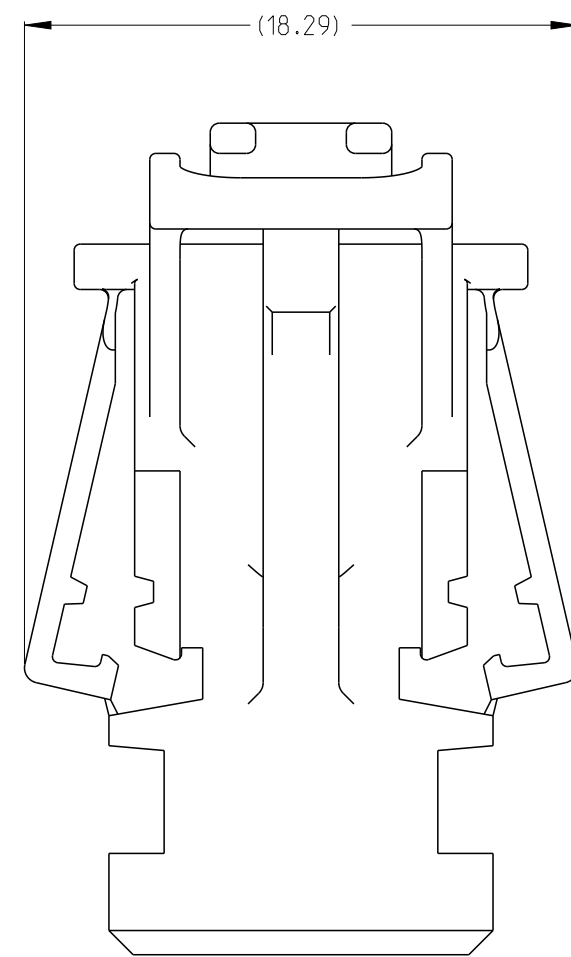
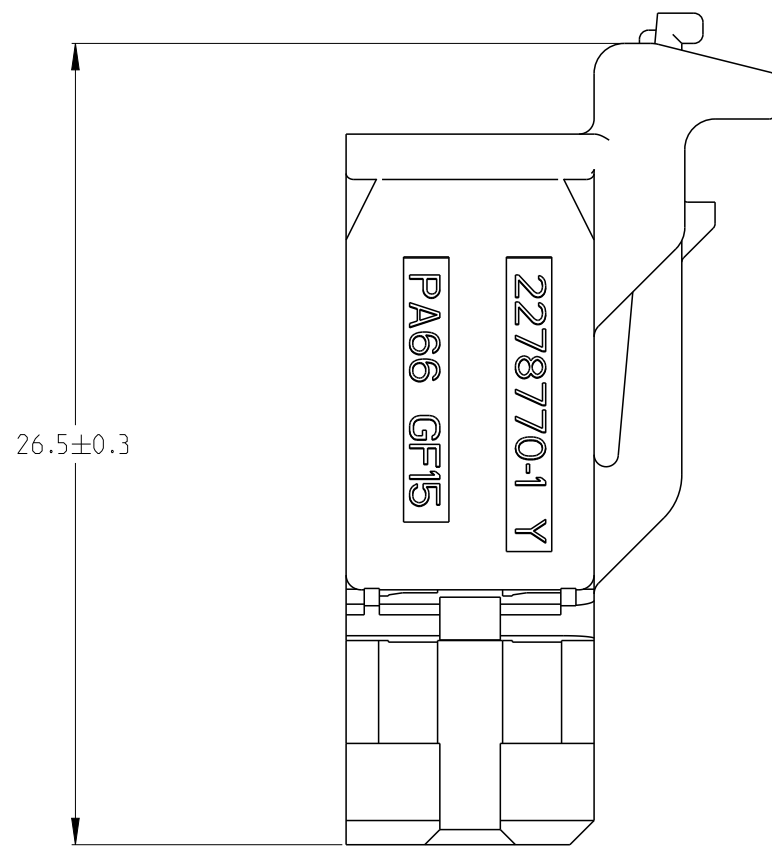
2278770-1  
 4 POSITION AS SHOWN



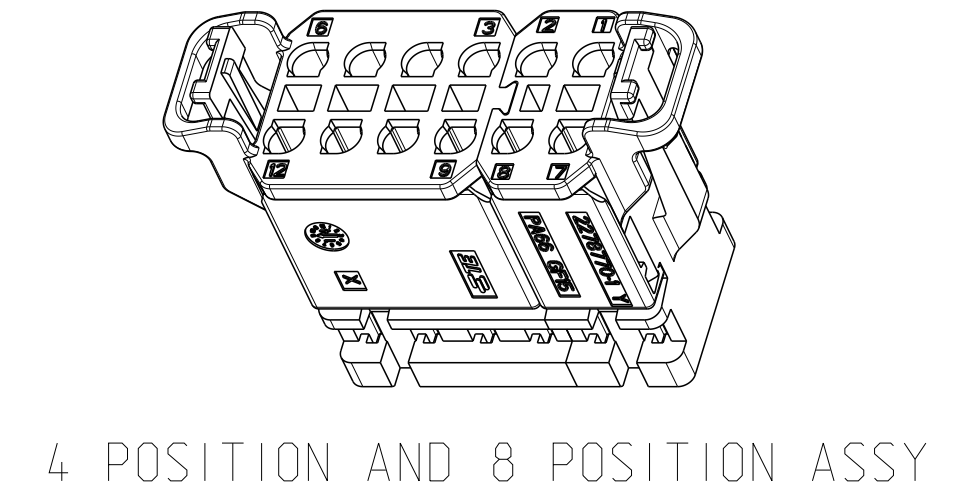
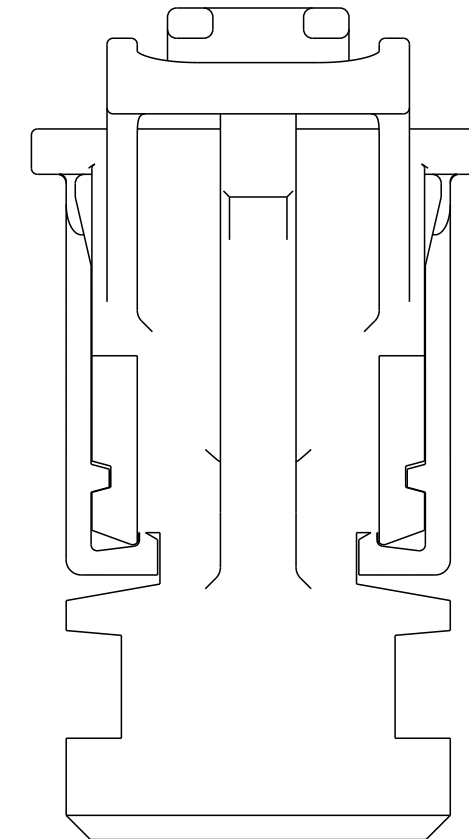
REVISIONS					
P	LTR	DESCRIPTION	DATE	DWN	APVD
A1		RELEASED	13JAN15	X.L	I.Y
B		REVISED (ECR-16-012813)	14SEP16	X.L	I.Y



2278770-2  
 8 POSITION



SECOND LOCK ENDED POSITION



- NOTES:
- 1. MATERIAL : PA66 GF15  
 COLOR: SEE TABLE
  - 2. MATING TE P/N : 2278701
  - 3. SUITABLE CONTACT :  
 0.25-0.35mm2 7-1452653-3  
 0.50-0.75mm2 7-1452656-3

PART NUMBER	2278770-1	2278770-2	2278770-3	2278770-4
COLOR	BLACK	BLACK	BLACK	BLACK
TERMINAL CAVITY NUMBER				

THIS DRAWING IS A CONTROLLED DOCUMENT.

DIMENSIONS:	TOLERANCES UNLESS OTHERWISE SPECIFIED:
mm	0 PLC ±
	1 PLC ±
	2 PLC ±
	3 PLC ±
	4 PLC ±
	ANGLES ±
	FINISH -
MATERIAL	-

DWN	X.LI	19SEP2014
CHK	E. JIANG	13JAN2015
APVD	I.YIN	13JAN2015
PRODUCT SPEC	-	-
APPLICATION SPEC	-	-
WEIGHT	-	-
CUSTOMER DRAWING	-	-

TE Connectivity		NAME	
		SOCKET 4P AND 8P	
SIZE	CAGE CODE	DRAWING NO	RESTRICTED TO
A2	-	C-2278770	-
SCALE		SHEET	REV
4:1		1 OF 1	B