

1888971-1 ✓ ACTIVE

QSFP/QSFP+

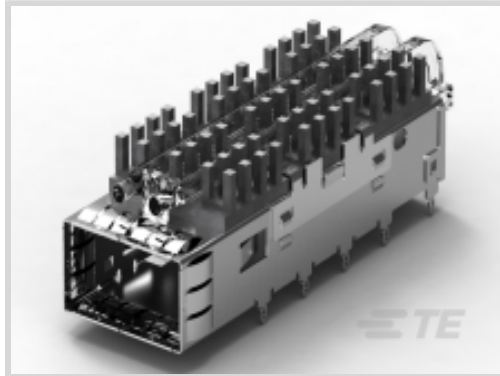
TE Internal #: 1888971-1

QSFP+, Cage Assembly, Signal, Operating Temperature Range -55 – 105 °C [-67 – 221 °F], Data Rate (Max) 14 Gb/s, 1 Ports

[View on TE.com >](#)



Connectors > Pluggable IO Connectors & Cages



Pluggable I/O Product Type: **Cage Assembly**

Sealable: **No**

Circuit Application: **Signal**

Operating Temperature Range: **-55 – 105 °C [-67 – 221 °F]**

Data Rate (Max): **14 Gb/s**

Features

Product Type Features

Thermal Accessory Type Included	Heat Sink
Cage Type	Single
Pluggable I/O Product Type	Cage Assembly
Sealable	No
Form Factor	QSFP+

Configuration Features

Number of Rear EONs per Port Column	2
Number of Ports	1
Port Matrix Configuration	1 x 1

Electrical Characteristics

Data Rate (Max)	14 Gb/s
-----------------	---------

Body Features

Heat Sink Finish	Anodized Black
Heat Sink Height	6.5 mm [.256 in]
Heat Sink Height Class	SAN
Heat Sink Style	Pin

Contact Features

PCB Contact Termination Area Plating Material	Tin
---	-----



Termination Features

Termination Post & Tail Length	2.2 mm[.086 in]
Termination Method to PCB	Through Hole - Press-Fit

Housing Features

Cage Material	Nickel Silver
---------------	---------------

Dimensions

PCB Thickness (Recommended)	1.45 mm[.057 in]
-----------------------------	------------------

Usage Conditions

Operating Temperature Range	-55 – 105 °C[-67 – 221 °F]
-----------------------------	----------------------------

Operation/Application

Pluggable I/O Applications	SFP+ Stacked Belly-to-Belly
Circuit Application	Signal

Industry Standards

UL Flammability Rating	UL 94V-0
------------------------	----------

Packaging Features

Packaging Method	Box & Tray
------------------	------------

Other

Included Lightpipe	Yes
EMI Containment Feature Type	Internal/External EMI Springs

Product Compliance

[For compliance documentation, visit the product page on TE.com>](#)

EU RoHS Directive 2011/65/EU	Compliant
EU ELV Directive 2000/53/EC	Compliant
China RoHS 2 Directive MIIT Order No 32, 2016	No Restricted Materials Above Threshold
EU REACH Regulation (EC) No. 1907/2006	Current ECHA Candidate List: JUNE 2024 (241) Candidate List Declared Against: JUNE 2022 (224) Does not contain REACH SVHC
Halogen Content	Not Low Halogen - contains Br or Cl > 900 ppm.
Solder Process Capability	Not applicable for solder process capability



Product Compliance Disclaimer

This information is provided based on reasonable inquiry of our suppliers and represents our current actual knowledge based on the information they provided. This information is subject to change. The part numbers that TE has identified as EU RoHS compliant have a maximum concentration of 0.1% by weight in homogenous materials for lead, hexavalent chromium, mercury, PBB, PBDE, DBP, BBP, DEHP, DIBP, and 0.01% for cadmium, or qualify for an exemption to these limits as defined in the Annexes of Directive 2011/65/EU (RoHS2). Finished electrical and electronic equipment products will be CE marked as required by Directive 2011/65/EU. Components may not be CE marked. Additionally, the part numbers that TE has identified as EU ELV compliant have a maximum concentration of 0.1% by weight in homogenous materials for lead, hexavalent chromium, and mercury, and 0.01% for cadmium, or qualify for an exemption to these limits as defined in the Annexes of Directive 2000/53/EC (ELV). Regarding the REACH Regulation, the information TE provides on SVHC in articles for this part number is based on the latest European Chemicals Agency (ECHA) 'Guidance on requirements for substances in articles' posted at this URL: <https://echa.europa.eu/guidance-documents/guidance-on-reach>

Compatible Parts



TE Part # CAT-C11-H50111
QSFP-Four SFP+ I/O Cable Assembly
30 AWG



TE Part # 1888810-2
EMI/Dust Cover, XFP And QSFP



TE Part # 2110819-1
QSFP+ Enh EVERCLEAR PT Conn



TE Part # 1-2053638-6
C/A, QSFP, 0.5M, P1-P2,
UNEQUALIZED



TE Part # CAT-C11-H5011
QSFP-Four SFP+ I/O Cable Assembly
28 AWG



TE Part # CAT-C11-H5011142
QSFP to QSFP I/O Cable Assembly: 33
AWG



TE Part # 2170539-1
CAGE ASSY SAN HS 4 LP GKT QSFP+
TRU BEZE



TE Part # 2202165-4
QSFP TO QSFP, 26AWG, FDR, 4.0
METER



TE Part # 2202165-5
QSFP TO QSFP, 26AWG, FDR, 5.0
METER



TE Part # 2829040-2
QSFP IB EDR, 33AWG, 1.0M



TE Part # 2829040-4
QSFP IB EDR, 30AWG, 1.0M



TE Part # 2829040-6
QSFP IB EDR, 30AWG, 2.0M



TE Part # 2829040-7
QSFP IB EDR, 26AWG, 2.0M

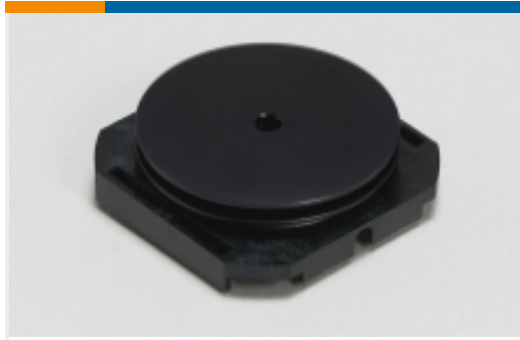


TE Part # 2829040-8
QSFP IB EDR, 26AWG, 3.0M



TE Part # 2821033-8
QSFP TO [4]SFP+, 28G, 1M, 33AWG

Also in the Series | **QSFP/QSFP+**



Heat Sinks(1)



Light Pipes(8)

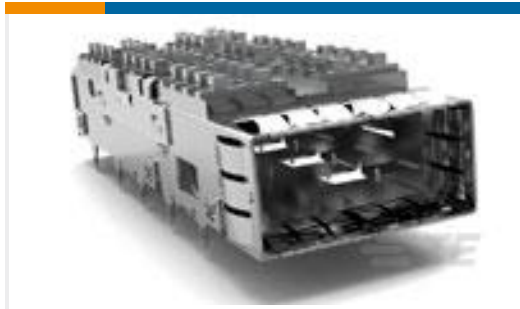


Pluggable I/O Cable Assemblies(13)



Pluggable IO Connectors & Cages(154)

Customers Also Bought



TE Part #1888631-1
Cage Assy PCI Hsink QSFP Thru



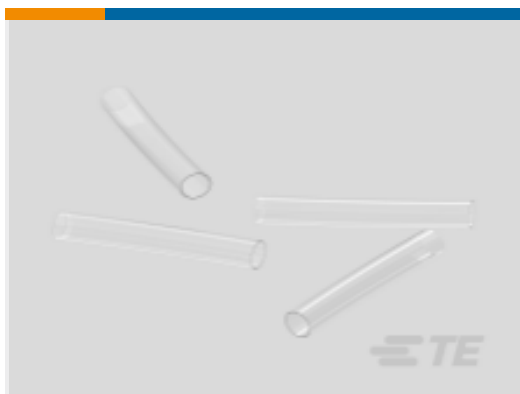
TE Part #1614902-2
CPF0805 1K0 0.1% 25PPM 5K RL



TE Part #6-2176369-8
RQ 0603 200R 0.1% 10PPM 5K RL



TE Part #1-2176392-8
RQ 1206 200K 0.1% 10PPM 5K RL



TE Part #NB16352001
RW-175-1/4-X-STK



TE Part #1337771-4
50 OHM COAX BNC STR PLUG STR P



TE Part #6-1437514-8
8134-HC-6P2=HOLTITE CONTACT 3.



TE Part #AAF6406-00
100P2475-50-09-L50-CHP

Documents

Product Drawings

Cage Assy Thru Bezelw/LP San, QSFP

English

CAD Files

3D PDF

3D



Customer View Model

[ENG_CVM_CVM_1888971-1_A2.2d_dxf.zip](#)

English

Customer View Model

[ENG_CVM_CVM_1888971-1_A2.3d_igs.zip](#)

English

Customer View Model

[ENG_CVM_CVM_1888971-1_A2.3d_stp.zip](#)

English

By downloading the CAD file I accept and agree to the [Terms and Conditions](#) of use.

Product Specifications

[Application Specification](#)

English

Instruction Sheets

[Instruction Sheet \(U.S.\)](#)

English