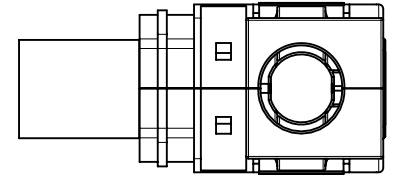
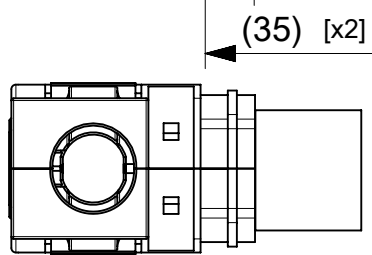
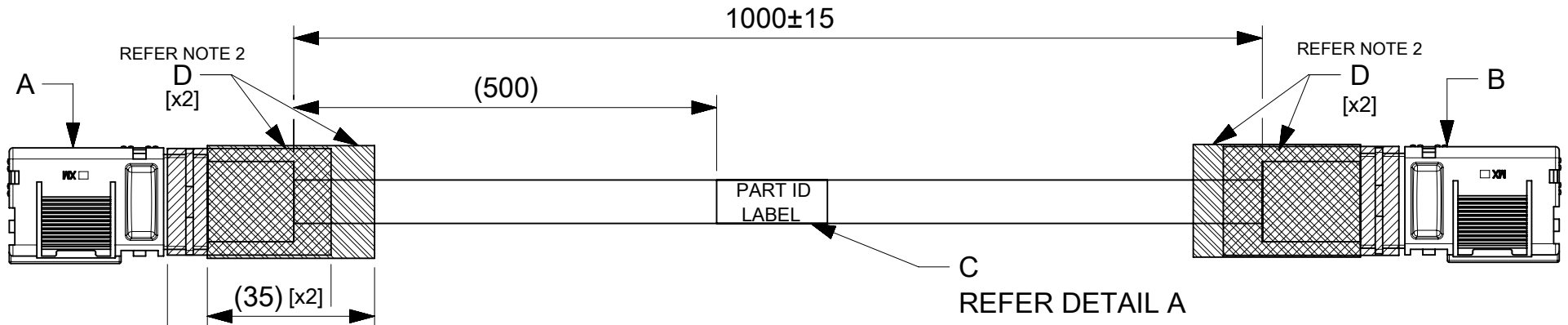


| ITEM # | MOLEX PART# | DESCRIPTION | QTY | UOM |
|--------|-------------|--|-----|-----|
| A,B | 2178841000 | 6mm SIDEWIZE ASSY 2 AWG RECEPTACLE BLK | 2 | PC |
| C | - | PART ID LABEL | 1 | PC |
| D | - | HST | A/R | M |

| FROM | TO | CABLE PART# | DESCRIPTION | COLOR |
|------|----|-------------|-------------------------|-------|
| A | B | - | 1X2AWG PVC UL1015 BLACK | BLACK |



DETAIL A
2243561116
MOLEX
BATCH WK/YR

- NOTE:
1. CABLE ASSEMBLY TO BE ENSURED FOR CONTINUITY.
 2. INSTALL HST ON THE BARREL AS SHOWN IN DRAWING.
 3. ENSURE LATCH AND THE CRIMPING PROFILE ARE IN THE SAME PLANE.
 4. HST (2 QTY) TO BE COVERED FROM THE WIRE INSULATION TO OVER THE RIB, TO ENSURE THERE IS NO EXPOSURE OF BARE MATERIAL.

| | | | | | | | | | | |
|--|---|--|-------------------|------------|---|--------------------------|----------|-----------------|--------------------------------------|--------------|
| FUNCTIONAL SYMBOLS $\nabla_A = 0$ $\nabla_E = 0$ $\nabla_P = 0$ | THIS DRAWING CONTAINS INFORMATION THAT IS PROPRIETARY TO MOLEX ELECTRONIC TECHNOLOGIES, LLC AND SHOULD NOT BE USED WITHOUT WRITTEN PERMISSION | | CURRENT REV DESC: | | | | | | | |
| | DIMENSION UNITS | SCALE | EC NO: 769243 | | | | | | SW1 6.0MM R-R 1M 2AWG BK | |
| | mm | NTS | DRWN: ROHITJ3 | | | PRODUCT CUSTOMER DRAWING | | | | |
| | GENERAL TOLERANCES (UNLESS SPECIFIED) | | 2023/11/09 | | | | | | DOCUMENT NUMBER 2243561116 | |
| ANGULAR TOL ± ° | | 2023/11/30 | | | DOC TYPE | DOC PART | REVISION | | | |
| 4 PLACES ± | | 2023/11/30 | | | PSD | 000 | E | | | |
| 3 PLACES ± | | APPR: SKUMAR07 | | | INITIAL REVISION: DRWN: MARUTG 2023/04/25 APPR: SKUMAR07 2023/04/27 | | | | | |
| 2 PLACES ± | | 2023/11/30 | | | | | | MATERIAL NUMBER | CUSTOMER | SHEET NUMBER |
| 1 PLACE ± | | 2023/11/30 | | | 2243561116 | GENERAL MARKET | 1 OF 1 | | | |
| 0 PLACES ± | | DRAFT WHERE APPLICABLE MUST REMAIN WITHIN DIMENSIONS | | | THIRD ANGLE PROJECTION | DRAWING | SERIES | MATERIAL NUMBER | CUSTOMER | SHEET NUMBER |
| | | A4-SIZE | 224356 | 2243561116 | GENERAL MARKET | 1 OF 1 | | | | |