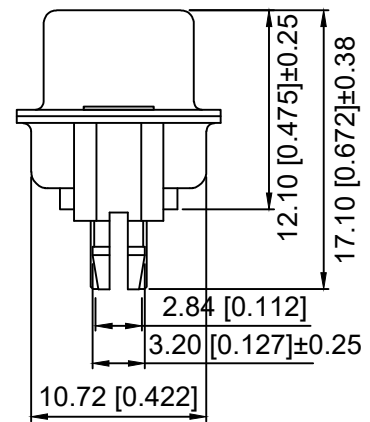
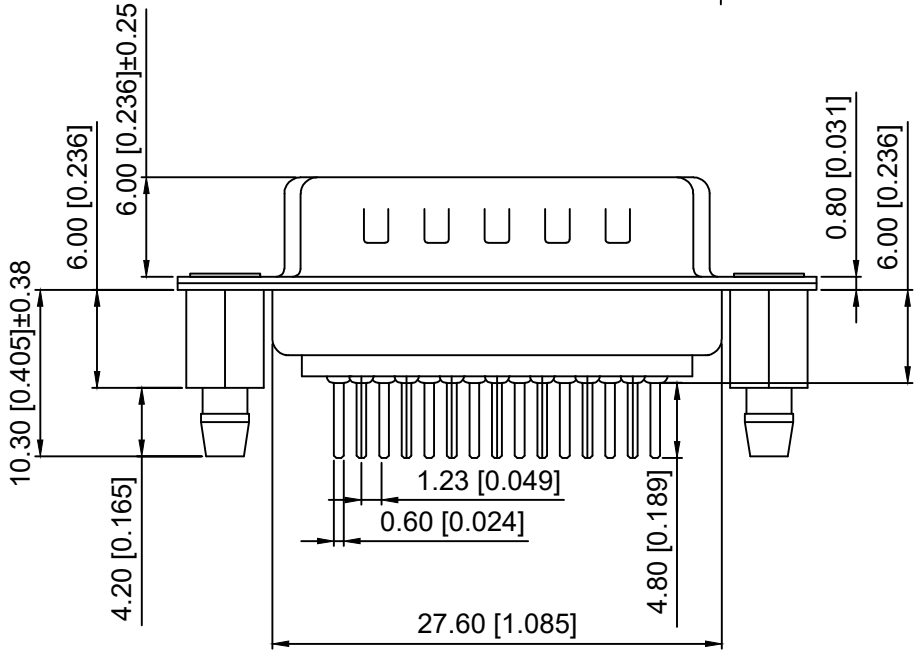


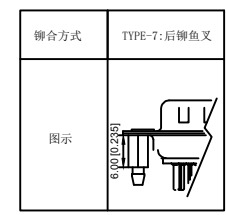
PCB LAYOUT

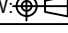


Specifications:
 规格:
 1.Voltage rating:250VAC/DC
 额定电压: 250V AC/DC
 2.Current rating:3A AC/DC
 额定电流: 3A AC/DC
 3.Withstanding voltage:500V AC/minute
 耐受电压: ≥500V AC/分钟
 4.Temperature range: -25℃-+80℃
 温度范围: -25℃-+80℃
 5.Insulation resistance:5000MΩMIN
 绝缘电阻: ≥5000MΩ
 6.Contact resistance:30mΩMax
 接触电阻: ≥30mΩ
 Material:
 材料:
 7.Rubber core:PBT UL94V-0
 胶芯: PBT UL94V-0
 8.The iron shell:SPCC Terminal half-Gold 15u Matte Tin
 铁壳: SPCC 半金15u雾锡
 B、成品不能有弯针, R角不一致等不良。

X02 15 W T 17 B 7
 ① ② ③ ④ ⑤ ⑥ ⑦

- ① Series N0.
- ② Row No.Pin No.XX-15;
- ③ Welding Board Angle :W-Male
- ④ T: Tradutional
- ⑤ Planting Category: 17-Terminal half-Gold 15u Matte Tin
- ⑥ Color:B-BLACK
- ⑦ 7:TYPE-7



					ANGLAR	±5°	DSND		SCALE: N/A	MODEL TYPE:	D-USB	
ΔX					L ≤ 4	±0.2	DWN		VIEW: 	PART NO.:	X0215WT17B7	
ΔX					4 < L ≤ 16	±0.3	CHKD		UNIT: mm/in	DWG NO.:	X-X0215WT17B7	
ΔX					16 < L ≤ 63	±0.4	APPD		SIZE: A4	WEIGHT	SHEET	REVISION
MARK	DESCRIPTION	DATE	REVISED	APPROVED	L > 63	±0.5	XKB INDUSTRIAL PRECISION CO.,LIMITED			1/1	A0	
REVISIONS					UNSPECIFIED TOLERANCES							
www.helloxkb.com www.helloxkb.cn www.xk-dg.cn												

