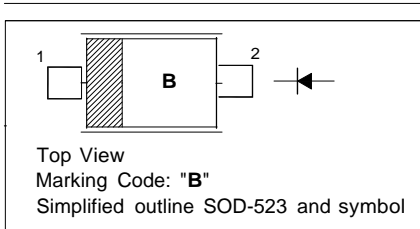


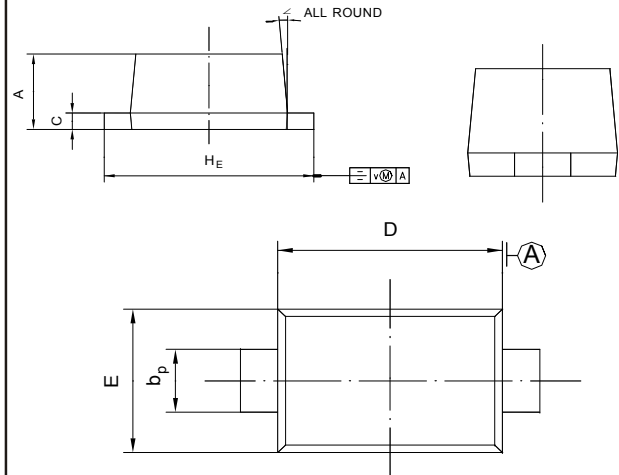
**Features**

- Extremely small surface mounting type
- High reliability



**PINNING**

PIN	DESCRIPTION
1	Cathode
2	Anode



UNIT	A	b <sub>p</sub>	C	D	E	H <sub>E</sub>	V	∠
mm	0.70 0.60	0.4 0.3	0.135 0.100	1.25 1.15	0.85 0.75	1.7 1.5	0.1	5°

**Absolute Maximum Ratings (T<sub>a</sub> = 25 °C)**

Parameter	Symbol	Value	Unit
Reverse Voltage	V <sub>R</sub>	30	V
Mean Rectifying Current	I <sub>F(AV)</sub>	200	mA
Peak Forward Surge Current (60 Hz for 1 Cyc.)	I <sub>FSM</sub>	1	A
Junction Temperature	T <sub>j</sub>	125	°C
Storage Temperature Range	T <sub>stg</sub>	- 40 to + 125	°C

**Characteristics at T<sub>a</sub> = 25 °C**

Parameter	Symbol	Max.	Unit
Forward Voltage at I <sub>F</sub> = 200 mA	V <sub>F</sub>	0.6	V
Reverse Current at V <sub>R</sub> = 10 V	I <sub>R</sub>	1	μA

Note: ESD sensitive product handling required.

## RATING AND CHARACTERISTIC CURVES (RB520S-30)

