

DATA SHEET

WIRELESS COMPONENTS

Band Pass Filter

BPF1608LM03R2400A

2.4 GHz

1608 Series



FEATURES

- Compact size design
- RoHS compliant

APPLICATIONS

- WLAN, 802.11a/n
- ISM Band

ORDERING INFORMATION

All part numbers are identified by the series, packing type, material, size, antenna type, working frequency and packing quantity.

PART NUMBER

BPF 1608 LM 03 R 2400A
 (1) (2) (3) (4) (5) (6)

(1) PRODUCT

BPF = Band Pass Filter

(2) SIZE

1608 = 1.60 × 0.8 mm

(3) MATERIALS

Material Code LM

(4) TYPE

03 = Type 03

(5) PACKING STYLE

R = Tape and Reel

(6) WORKING FREQUENCY

2400 = 2.4 GHz

SPECIFICATION

Table 1

DESCRIPTION	Value
Pass Band	2400 ~ 2500 MHz
Insertion Loss	1.5 dB (Max) at 25°C 2.0 dB (Max) at -40~85°C
Return Loss	10dB (Min.)
Ripple	0.50 dB
Attenuation	30 min. at 880 ~ 915 MHz 25 min. at 1710 ~ 1785 MHz 25 min. at 1850 ~ 1910 MHz 25 min. at 4800 ~ 5000 MHz 25 min. at 7200 ~ 7500 MHz
Operating Temperature	-40 ~ 85°C

DIMENSIONS

Table 2 Mechanical Dimension

	DIMENSION
L (mm)	1.60 ±0.15
W (mm)	0.80 ±0.15
T (mm)	0.60 ±0.15
P (mm)	0.40 ±0.15
C (mm)	0.55 ±0.15
G (mm)	0.60 ±0.15
E (mm)	0.15 ±0.10
F (mm)	0.15 ±0.10
L (mm)	1.60 ±0.15

Table 3 Termination configuration

TERMINAL NAME	FUNCTION
P1	Input
P2	Output
P3	GND
P4	GND

OUTLINES

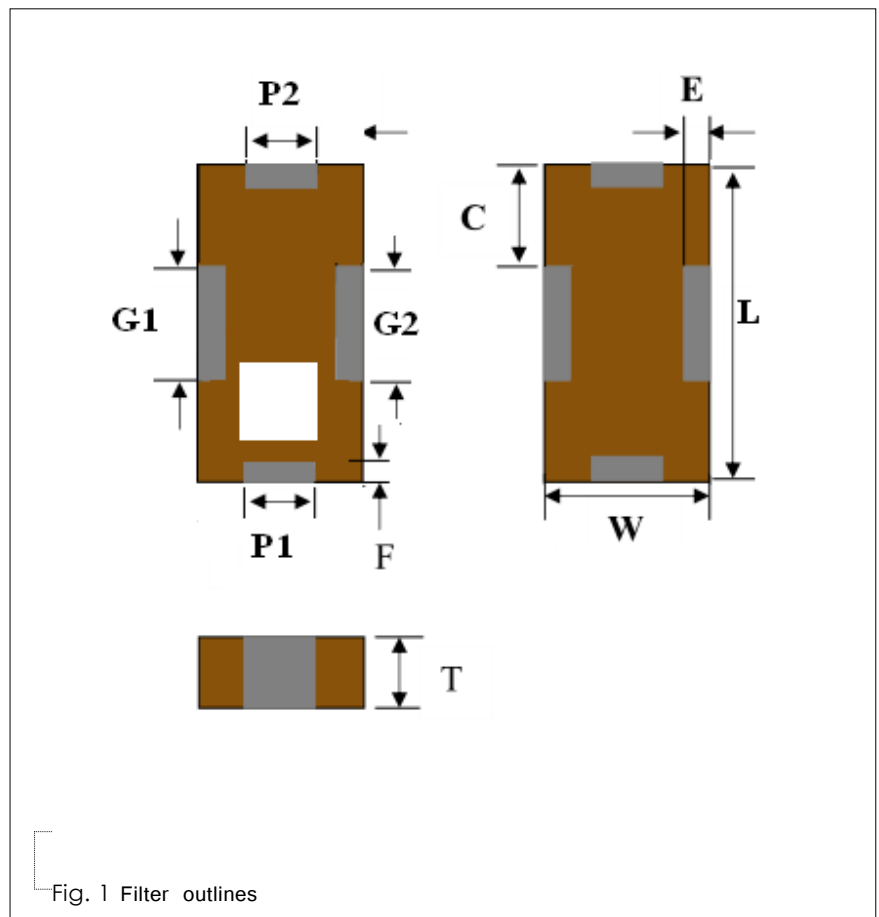
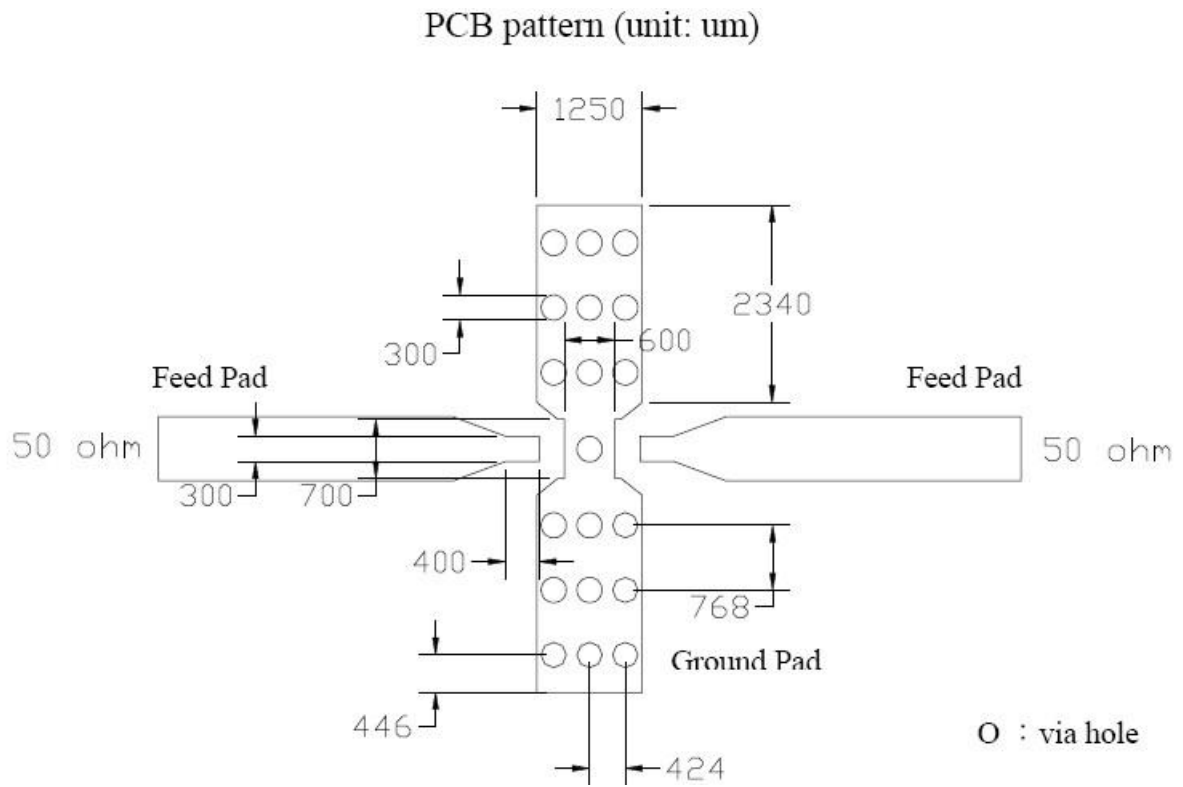


Fig. 1 Filter outlines



Line width should be designed to match 50Ω characteristic impedance, depending on PCB material and thickness.

Fig. 2 Reference design of evaluation board

ELECTRICAL PERFORMANCES

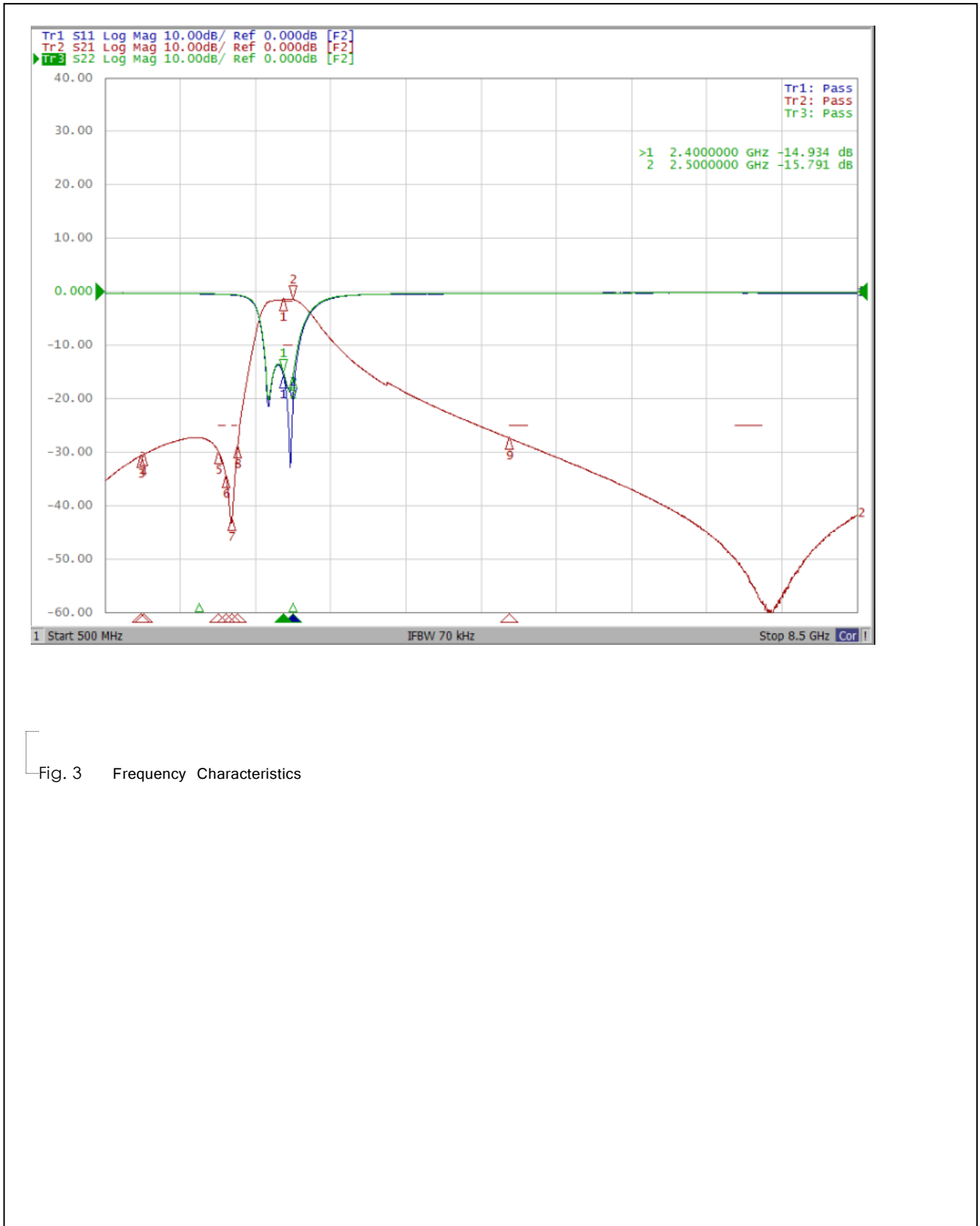


Fig. 3 Frequency Characteristics

REVISION HISTORY

<u>REVISION</u>	<u>DATE</u>	<u>CHANGE NOTIFICATION</u>	<u>DESCRIPTION</u>
Version 2	Oct. 16, 2020		- New data sheet for Band Pass Filter, 2.45 GHz application, 1608 series