

# PTI 4-PE/L/LT - Installation ground terminal block



3214048

<https://www.phoenixcontact.com/us/products/3214048>

Please be informed that the data shown in this PDF document is generated from our online catalog. Please find the complete data in the user documentation. Our general terms of use for downloads are valid.



Installation ground terminal block, nom. voltage: 400 V, nominal current: 28 A, Push-in connection, 1st, 2nd and 3rd level, Rated cross section: 4 mm<sup>2</sup>, cross section: 0.2 mm<sup>2</sup> - 6 mm<sup>2</sup>, Push-in connection, mounting type: NS 35/7,5, NS 35/15, color: gray

## Your advantages

- Compatible with all Phoenix Contact installation terminal blocks
- As well as the testing facility in the function shaft, each terminal point has a test contact
- Each terminal point can be clearly labeled and easily recognized in every terminal block mounting position
- Double function shafts on all levels
- Compact design tailored to distribution boards
- The new Push-in connection technology enables easy, direct insertion of solid and stranded conductors with ferrules with a cross section of 0.34 mm<sup>2</sup> or higher

## Commercial data

Item number	3214048
Packing unit	50 pc
Minimum order quantity	1 pc
Product key	BE2253
Catalog page	Page 109 (C-1-2019)
GTIN	4046356817783
Weight per piece (including packing)	24.63 g
Weight per piece (excluding packing)	24.63 g
Country of origin	PL

# PTI 4-PE/L/LT - Installation ground terminal block



3214048

<https://www.phoenixcontact.com/us/products/3214048>

## Technical data

### Product properties

Product type	Installation terminal block
Number of connections	5
Number of rows	3
Potentials	2

### Insulation characteristics

Overvoltage category	III
Degree of pollution	3

### Electrical properties

Rated surge voltage	6 kV
Maximum power dissipation for nominal condition	1.02 W

### Connection data

Grounding foot	Yes
Number of connections per level	2
Nominal cross section	4 mm <sup>2</sup>

### 1st, 2nd and 3rd level

Stripping length	10 mm ... 12 mm
Internal cylindrical gage	A4
Connection in acc. with standard	IEC 60947-7-1
Conductor cross section rigid	0.2 mm <sup>2</sup> ... 6 mm <sup>2</sup>
Cross section AWG	24 ... 10 (converted acc. to IEC)
Conductor cross section flexible	0.2 mm <sup>2</sup> ... 6 mm <sup>2</sup>
Conductor cross section, flexible [AWG]	24 ... 10 (converted acc. to IEC)
Conductor cross-section flexible (ferrule without plastic sleeve)	0.25 mm <sup>2</sup> ... 4 mm <sup>2</sup>
Flexible conductor cross section (ferrule with plastic sleeve)	0.25 mm <sup>2</sup> ... 4 mm <sup>2</sup>
2 conductors with the same cross section, flexible, with TWIN ferrule with plastic sleeve	0.5 mm <sup>2</sup> ... 1 mm <sup>2</sup>
Nominal current	28 A (with 4 mm <sup>2</sup> conductor cross section)
Maximum load current	32 A (with 6 mm <sup>2</sup> conductor cross section)
Nominal voltage	400 V
Nominal cross section	4 mm <sup>2</sup>
Stripping length	10 mm ... 12 mm
2 conductors with the same cross section, flexible, with TWIN ferrule with plastic sleeve	1 mm <sup>2</sup>

### 1st, 2nd and 3rd level Connection cross sections directly pluggable

Conductor cross section rigid	0.5 mm <sup>2</sup> ... 6 mm <sup>2</sup>
Conductor cross-section flexible (ferrule without plastic sleeve)	0.5 mm <sup>2</sup> ... 4 mm <sup>2</sup>
Flexible conductor cross section (ferrule with plastic sleeve)	0.5 mm <sup>2</sup> ... 4 mm <sup>2</sup>

# PTI 4-PE/L/LT - Installation ground terminal block



3214048

<https://www.phoenixcontact.com/us/products/3214048>

Connection cross sections directly pluggable

Conductor cross section rigid	0.5 mm <sup>2</sup> ... 6 mm <sup>2</sup>
Conductor cross-section flexible (ferrule without plastic sleeve)	0.5 mm <sup>2</sup> ... 4 mm <sup>2</sup>
Flexible conductor cross section (ferrule with plastic sleeve)	0.5 mm <sup>2</sup> ... 4 mm <sup>2</sup>

## Dimensions

Width	6.2 mm
End cover width	2.2 mm
Height	114 mm
Depth on NS 35/7,5	50.5 mm
Depth on NS 35/15	58 mm

## Material specifications

Color	gray
Flammability rating according to UL 94	V0
Insulating material group	I
Insulating material	PA
Static insulating material application in cold	-60 °C
Temperature index of insulation material (DIN EN 60216-1 (VDE 0304-21))	130 °C
Relative insulation material temperature index (Elec., UL 746 B)	130 °C
Fire protection for rail vehicles (DIN EN 45545-2) R22	HL 1 - HL 3
Fire protection for rail vehicles (DIN EN 45545-2) R23	HL 1 - HL 3
Fire protection for rail vehicles (DIN EN 45545-2) R24	HL 1 - HL 3
Fire protection for rail vehicles (DIN EN 45545-2) R26	HL 1 - HL 3
Calorimetric heat release NFPA 130 (ASTM E 1354)	28 MJ/kg
Surface flammability NFPA 130 (ASTM E 162)	passed
Specific optical density of smoke NFPA 130 (ASTM E 662)	passed
Smoke gas toxicity NFPA 130 (SMP 800C)	passed

## Electrical tests

Surge voltage test

Test voltage setpoint	7.3 kV
Result	Test passed

Temperature-rise test

Requirement temperature-rise test	Increase in temperature ≤ 45 K
Result	Test passed
Short-time withstand current 4 mm <sup>2</sup>	0.48 kA
Short-time withstand current 6 mm <sup>2</sup>	0.72 kA
Result	Test passed

Power-frequency withstand voltage

Test voltage setpoint	1.89 kV
-----------------------	---------

# PTI 4-PE/L/LT - Installation ground terminal block



3214048

<https://www.phoenixcontact.com/us/products/3214048>

Result	Test passed
--------	-------------

## Mechanical properties

### Mechanical data

Open side panel	Yes
-----------------	-----

## Mechanical tests

### Mechanical strength

Result	Test passed
--------	-------------

### Test for conductor damage and slackening

Rotation speed	10 rpm
Revolutions	135
Conductor cross section/weight	0.2 mm <sup>2</sup> / 0.2 kg
	4 mm <sup>2</sup> / 0.9 kg
	6 mm <sup>2</sup> / 1.4 kg
Result	Test passed

## Environmental and real-life conditions

### Aging

Temperature cycles	192
Result	Test passed

### Needle-flame test

Time of exposure	30 s
Result	Test passed

### Oscillation/broadband noise

Specification	DIN EN 50155 (VDE 0115-200):2008-03
Spectrum	Service life test category 2, bogie-mounted
Frequency	$f_1 = 5 \text{ Hz}$ to $f_2 = 250 \text{ Hz}$
ASD level	6.12 (m/s <sup>2</sup> ) <sup>2</sup> /Hz
Acceleration	3.12g
Test duration per axis	5 h
Test directions	X-, Y- and Z-axis
Result	Test passed

### Shocks

Specification	DIN EN 50155 (VDE 0115-200):2008-03
Pulse shape	Half-sine
Acceleration	30g
Shock duration	18 ms
Number of shocks per direction	3
Test directions	X-, Y- and Z-axis (pos. and neg.)
Result	Test passed

# PTI 4-PE/L/LT - Installation ground terminal block



3214048

<https://www.phoenixcontact.com/us/products/3214048>

## Ambient conditions

Ambient temperature (operation)	-60 °C ... 110 °C (Operating temperature range incl. self-heating; for max. short-term operating temperature, see RTI Elec.)
Ambient temperature (storage/transport)	-25 °C ... 60 °C (for a short time, not exceeding 24 h, -60 °C to +70 °C)
Ambient temperature (assembly)	-5 °C ... 70 °C
Ambient temperature (actuation)	-5 °C ... 70 °C
Permissible humidity (operation)	20 % ... 90 %
Permissible humidity (storage/transport)	30 % ... 70 %

## Standards and regulations

Connection in acc. with standard	IEC 60947-7-1
----------------------------------	---------------

## Mounting

Mounting type	NS 35/7,5
	NS 35/15

# PTI 4-PE/L/LT - Installation ground terminal block

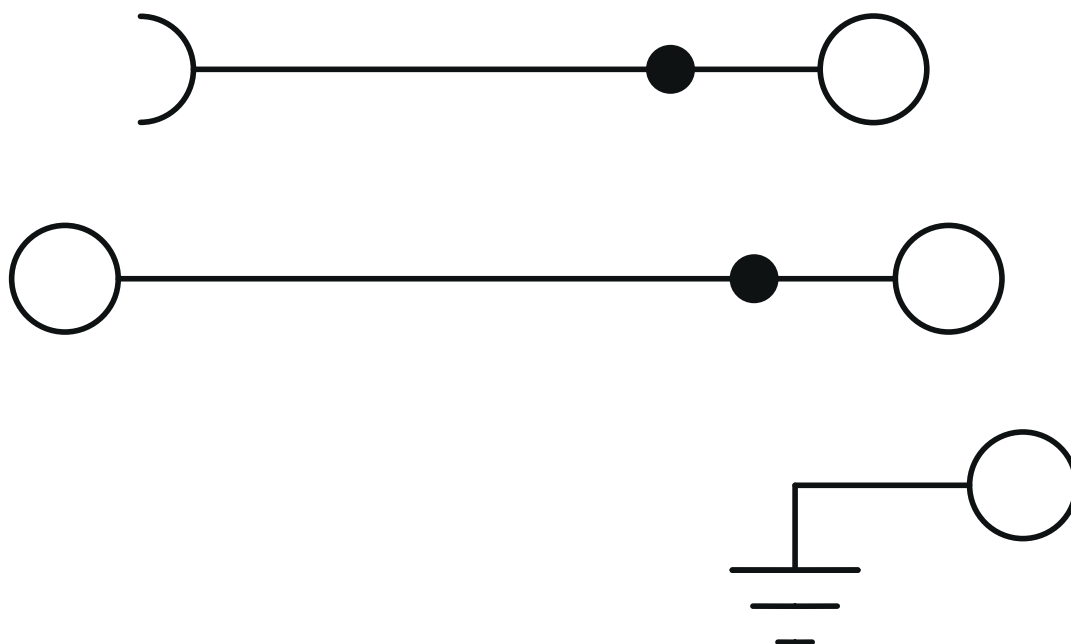


3214048

<https://www.phoenixcontact.com/us/products/3214048>

## Drawings

Circuit diagram



# PTI 4-PE/L/LT - Installation ground terminal block



3214048

<https://www.phoenixcontact.com/us/products/3214048>

## Approvals

To download certificates, visit the product detail page: <https://www.phoenixcontact.com/us/products/3214048>



**CSA**

Approval ID: 2030668



**CSA**

Approval ID: 2030668



**IECEE CB Scheme**

Approval ID: DE1-62955



**EAC**

Approval ID: RU C-DE.BL08.B.00644



**cULus Recognized**

Approval ID: E60425



**cULus Recognized**

Approval ID: E60425



**VDE Zeichengenehmigung**

Approval ID: 40037480

**DNV**

Approval ID: TAE00001BU

# PTI 4-PE/L/LT - Installation ground terminal block



3214048

<https://www.phoenixcontact.com/us/products/3214048>

## Classifications

### ECLASS

ECLASS-11.0	27141125
ECLASS-12.0	27141125
ECLASS-13.0	27250110

### ETIM

ETIM 9.0	EC001329
----------	----------

### UNSPSC

UNSPSC 21.0	39121400
-------------	----------



# PTI 4-PE/L/LT - Installation ground terminal block



3214048

<https://www.phoenixcontact.com/us/products/3214048>

## Environmental product compliance

### EU RoHS

Fulfills EU RoHS substance requirements	Yes, No exemptions
---	--------------------

### China RoHS

Environment friendly use period (EFUP)	EFUP-E
	No hazardous substances above the limits

### EU REACH SVHC


REACH candidate substance (CAS No.)	No substance above 0.1 wt%
-------------------------------------	----------------------------

# PTI 4-PE/L/LT - Installation ground terminal block

3214048

<https://www.phoenixcontact.com/us/products/3214048>

## Accessories

 Note: Applying some accessories below might limit this product.


### FBS 20-6 - Plug-in bridge

3030365

<https://www.phoenixcontact.com/us/products/3030365>



Plug-in bridge, pitch: 6.2 mm, number of positions: 20, color: red

 Max. current carrying capacity: 32 A

### FBS 10-6 - Plug-in bridge

3030271

<https://www.phoenixcontact.com/us/products/3030271>



Plug-in bridge, pitch: 6.2 mm, number of positions: 10, color: red

 Max. current carrying capacity: 32 A

# PTI 4-PE/L/LT - Installation ground terminal block



3214048

<https://www.phoenixcontact.com/us/products/3214048>


## FBS 5-6 - Plug-in bridge

3030349

<https://www.phoenixcontact.com/us/products/3030349>



Plug-in bridge, pitch: 6.2 mm, number of positions: 5, color: red

 Max. current carrying capacity: 32 A

---


## FBS 4-6 - Plug-in bridge

3030255

<https://www.phoenixcontact.com/us/products/3030255>



Plug-in bridge, pitch: 6.2 mm, number of positions: 4, color: red

 Max. current carrying capacity: 32 A

---

# PTI 4-PE/L/LT - Installation ground terminal block



3214048

<https://www.phoenixcontact.com/us/products/3214048>

## FBS 3-6 - Plug-in bridge

3030242

<https://www.phoenixcontact.com/us/products/3030242>



Plug-in bridge, pitch: 6.2 mm, number of positions: 3, color: red

 Max. current carrying capacity: 32 A

---


## FBS 2-6 - Plug-in bridge

3030336

<https://www.phoenixcontact.com/us/products/3030336>



Plug-in bridge, pitch: 6.2 mm, number of positions: 2, color: red

 Max. current carrying capacity: 32 A

---

# PTI 4-PE/L/LT - Installation ground terminal block



3214048

<https://www.phoenixcontact.com/us/products/3214048>

## FBS 6-6 - Plug-in bridge

1008238

<https://www.phoenixcontact.com/us/products/1008238>



Plug-in bridge, One side not fully isolated, pitch: 6.2 mm, number of positions: 6, color: red

 Max. current carrying capacity: 32 A

---

## FBS 50-6 - Plug-in bridge

3032224

<https://www.phoenixcontact.com/us/products/3032224>



Plug-in bridge, pitch: 6.2 mm, number of positions: 50, color: red

 Max. current carrying capacity: 32 A

# PTI 4-PE/L/LT - Installation ground terminal block

3214048

<https://www.phoenixcontact.com/us/products/3214048>


## FBSR 2-6 - Plug-in bridge

3033715

<https://www.phoenixcontact.com/us/products/3033715>



Plug-in bridge, pitch: 6.2 mm, number of positions: 2, color: red

 Max. current carrying capacity: 24 A

---


## FBSR 3-6 - Plug-in bridge

3001594

<https://www.phoenixcontact.com/us/products/3001594>



Plug-in bridge, pitch: 6.2 mm, number of positions: 3, color: red

 Max. current carrying capacity: 24 A

---

# PTI 4-PE/L/LT - Installation ground terminal block

3214048

<https://www.phoenixcontact.com/us/products/3214048>

## FBSR 4-6 - Plug-in bridge

3001595

<https://www.phoenixcontact.com/us/products/3001595>



Plug-in bridge, pitch: 6.2 mm, number of positions: 4, color: red

 Max. current carrying capacity: 24 A

---

## FBSR 5-6 - Plug-in bridge

3001596

<https://www.phoenixcontact.com/us/products/3001596>



Plug-in bridge, pitch: 6.2 mm, number of positions: 5, color: red

 Max. current carrying capacity: 24 A

---

# PTI 4-PE/L/LT - Installation ground terminal block

3214048

<https://www.phoenixcontact.com/us/products/3214048>


## FBSR 10-6 - Plug-in bridge

3033716

<https://www.phoenixcontact.com/us/products/3033716>



Plug-in bridge, pitch: 6.2 mm, number of positions: 10, color: red

 Max. current carrying capacity: 24 A

---


## FBSRH 2-6 - Short-circuit connector

3033812

<https://www.phoenixcontact.com/us/products/3033812>



Short-circuit connector, pitch: 6.2 mm, number of positions: 2, color: red

 Max. current carrying capacity: 24 A



# PTI 4-PE/L/LT - Installation ground terminal block

3214048

<https://www.phoenixcontact.com/us/products/3214048>

## FBS 2-6 BU - Plug-in bridge

3036932

<https://www.phoenixcontact.com/us/products/3036932>



Plug-in bridge, pitch: 6.2 mm, number of positions: 2, color: blue

 Max. current carrying capacity: 32 A

---

## FBS 3-6 BU - Plug-in bridge

3036945

<https://www.phoenixcontact.com/us/products/3036945>



Plug-in bridge, pitch: 6.2 mm, number of positions: 3, color: blue

 Max. current carrying capacity: 32 A

---

# PTI 4-PE/L/LT - Installation ground terminal block

3214048

<https://www.phoenixcontact.com/us/products/3214048>

## FBS 4-6 BU - Plug-in bridge

3036958

<https://www.phoenixcontact.com/us/products/3036958>



Plug-in bridge, pitch: 6.2 mm, number of positions: 4, color: blue

 Max. current carrying capacity: 32 A

---

## FBS 5-6 BU - Plug-in bridge

3036961

<https://www.phoenixcontact.com/us/products/3036961>



Plug-in bridge, pitch: 6.2 mm, number of positions: 5, color: blue

 Max. current carrying capacity: 32 A

---

# PTI 4-PE/L/LT - Installation ground terminal block



3214048

<https://www.phoenixcontact.com/us/products/3214048>


## FBS 10-6 BU - Plug-in bridge

3032198

<https://www.phoenixcontact.com/us/products/3032198>

Plug-in bridge, pitch: 6.2 mm, number of positions: 10, color: blue



 Max. current carrying capacity: 32 A

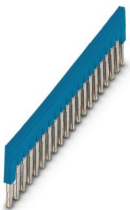
---


## FBS 20-6 BU - Plug-in bridge

3032208

<https://www.phoenixcontact.com/us/products/3032208>

Plug-in bridge, pitch: 6.2 mm, number of positions: 20, color: blue



 Max. current carrying capacity: 32 A

# PTI 4-PE/L/LT - Installation ground terminal block



3214048

<https://www.phoenixcontact.com/us/products/3214048>

## FBS 50-6 BU - Plug-in bridge

3032211

<https://www.phoenixcontact.com/us/products/3032211>



Plug-in bridge, pitch: 6.2 mm, number of positions: 50, color: blue

 Max. current carrying capacity: 32 A

---

## D-PTI 4/3 - End cover

3214054

<https://www.phoenixcontact.com/us/products/3214054>

End cover, depth: 48.2 mm, width: 2.2 mm, height: 114 mm, color: gray



# PTI 4-PE/L/LT - Installation ground terminal block



3214048

<https://www.phoenixcontact.com/us/products/3214048>

## ATP-PTI/3 - Partition plate

3213990

<https://www.phoenixcontact.com/us/products/3213990>

Partition plate, depth: 49.3 mm, width: 2.2 mm, height: 103 mm, color: gray



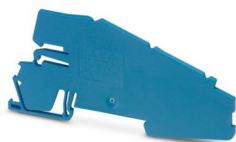
---

## AB-PTI 4/3 - Support bracket

3214053

<https://www.phoenixcontact.com/us/products/3214053>

Support bracket, Bracket for busbars, set every 20 cm, depth: 46 mm, width: 2.2 mm, height: 116 mm, number of positions: 1, color: blue



# PTI 4-PE/L/LT - Installation ground terminal block



3214048

<https://www.phoenixcontact.com/us/products/3214048>

## LPS-6/E - Service connector

3270540

<https://www.phoenixcontact.com/us/products/3270540>



Service connector, nom. voltage: 800 V, nominal current: 24 A, number of positions: 1, connection method: Push-in connection, Rated cross section: 2.5 mm<sup>2</sup>, cross section: 0.14 mm<sup>2</sup>- 4 mm<sup>2</sup>, color: red

---

## LPS-6 - Service connector

3270541

<https://www.phoenixcontact.com/us/products/3270541>



Service connector, nom. voltage: 800 V, nominal current: 24 A, number of positions: 1, connection method: Push-in connection, Rated cross section: 2.5 mm<sup>2</sup>, cross section: 0.14 mm<sup>2</sup>- 4 mm<sup>2</sup>, color: red

# PTI 4-PE/L/LT - Installation ground terminal block



3214048

<https://www.phoenixcontact.com/us/products/3214048>

## LPO 4/E - Pick-off plug

3270519

<https://www.phoenixcontact.com/us/products/3270519>



Pick-off plug, nom. voltage: 800 V, nominal current: 24 A, number of positions: 1, connection method: Push-in connection, Rated cross section: 2.5 mm<sup>2</sup>, cross section: 0.14 mm<sup>2</sup>- 4 mm<sup>2</sup>, color: gray

---

## LPO 4 - Pick-off plug

3270522

<https://www.phoenixcontact.com/us/products/3270522>



Pick-off plug, nom. voltage: 800 V, nominal current: 24 A, number of positions: 1, connection method: Push-in connection, Rated cross section: 2.5 mm<sup>2</sup>, cross section: 0.14 mm<sup>2</sup>- 4 mm<sup>2</sup>, color: gray

# PTI 4-PE/L/LT - Installation ground terminal block



3214048

<https://www.phoenixcontact.com/us/products/3214048>

## NS 35/ 7,5 PERF 2000MM - DIN rail perforated

0801733

<https://www.phoenixcontact.com/us/products/0801733>



DIN rail perforated, Pack of 25 (50 m), acc. to EN 60715, material: Steel, galvanized, passivated with a thick layer, Standard profile, color: silver

---

## NS 35/ 7,5 UNPERF 2000MM - DIN rail, unperforated

0801681

<https://www.phoenixcontact.com/us/products/0801681>



DIN rail, unperforated, Pack of 25 (50 m), acc. to EN 60715, material: Steel, galvanized, passivated with a thick layer, Standard profile, color: silver



# PTI 4-PE/L/LT - Installation ground terminal block



3214048

<https://www.phoenixcontact.com/us/products/3214048>

## NS 35/ 7,5 WH PERF 2000MM - DIN rail perforated

1204119

<https://www.phoenixcontact.com/us/products/1204119>



DIN rail perforated, Pack of 25 (50 m), acc. to EN 60715, material: Steel, Galvanized, white passivated, Standard profile, color: silver

---

## NS 35/ 7,5 WH UNPERF 2000MM-VPE 10 - DIN rail, unperforated

1204122

<https://www.phoenixcontact.com/us/products/1204122>



DIN rail, unperforated, Pack of 10 (20 m), acc. to EN 60715, material: Steel, Galvanized, white passivated, Standard profile, color: silver

# PTI 4-PE/L/LT - Installation ground terminal block



3214048

<https://www.phoenixcontact.com/us/products/3214048>

## NS 35/ 7,5 AL UNPERF 2000MM - DIN rail, unperforated

0801704

<https://www.phoenixcontact.com/us/products/0801704>



DIN rail, unperforated, Pack of 25 (50 m), acc. to EN 60715, material: Aluminum, uncoated, Standard profile, color: silver

---

## NS 35/ 7,5 ZN PERF 2000MM - DIN rail perforated

1206421

<https://www.phoenixcontact.com/us/products/1206421>



DIN rail perforated, Pack of 25 (50 m), acc. to EN 60715, material: Steel, galvanized, Standard profile, color: silver

# PTI 4-PE/L/LT - Installation ground terminal block



3214048

<https://www.phoenixcontact.com/us/products/3214048>

## NS 35/ 7,5 ZN UNPERF 2000MM - DIN rail, unperforated

1206434

<https://www.phoenixcontact.com/us/products/1206434>



DIN rail, unperforated, Pack of 25 (50 m), acc. to EN 60715, material: Steel, galvanized, Standard profile, color: silver

---

## NS 35/ 7,5 CU UNPERF 2000MM-VPE 10 - DIN rail, unperforated

0801762

<https://www.phoenixcontact.com/us/products/0801762>



DIN rail, unperforated, Pack of 10 (20 m), acc. to EN 60715, material: Copper, uncoated, Standard profile, color: copper-colored

# PTI 4-PE/L/LT - Installation ground terminal block



3214048

<https://www.phoenixcontact.com/us/products/3214048>

## NS 35/ 7,5 CAP - End cap

1206560

<https://www.phoenixcontact.com/us/products/1206560>

DIN rail end piece, for DIN rail NS 35/7.5



---

## NS 35/15 PERF 2000MM - DIN rail perforated

1201730

<https://www.phoenixcontact.com/us/products/1201730>



DIN rail perforated, Pack of 25 (50 m), similar to EN 60715, material: Steel, galvanized, passivated with a thick layer, Standard profile, color: silver

# PTI 4-PE/L/LT - Installation ground terminal block



3214048

<https://www.phoenixcontact.com/us/products/3214048>

## NS 35/15 UNPERF 2000MM - DIN rail, unperforated

1201714

<https://www.phoenixcontact.com/us/products/1201714>



DIN rail, unperforated, Pack of 25 (50 m), similar to EN 60715, material: Steel, galvanized, passivated with a thick layer, Standard profile, color: silver

---

## NS 35/15 WH PERF 2000MM - DIN rail perforated

0806602

<https://www.phoenixcontact.com/us/products/0806602>



DIN rail perforated, Pack of 25 (50 m), similar to EN 60715, material: Steel, Galvanized, white passivated, Standard profile, color: white

# PTI 4-PE/L/LT - Installation ground terminal block



3214048

<https://www.phoenixcontact.com/us/products/3214048>

## NS 35/15 WH UNPERF 2000MM-VPE 10 - DIN rail, unperforated

1204135

<https://www.phoenixcontact.com/us/products/1204135>



DIN rail, unperforated, Pack of 10 (20 m), similar to EN 60715, material: Steel, Galvanized, white passivated, Standard profile, color: silver

---

## NS 35/15 AL UNPERF 2000MM - DIN rail, unperforated

1201756

<https://www.phoenixcontact.com/us/products/1201756>



DIN rail, unperforated, similar to EN 60715, material: Aluminum, uncoated, Standard profile, color: silver

# PTI 4-PE/L/LT - Installation ground terminal block



3214048

<https://www.phoenixcontact.com/us/products/3214048>

## NS 35/15 ZN PERF 2000MM - DIN rail perforated

1206599

<https://www.phoenixcontact.com/us/products/1206599>



DIN rail perforated, Pack of 25 (50 m), similar to EN 60715, material: Steel, galvanized, Standard profile, color: silver

---

## NS 35/15 ZN UNPERF 2000MM - DIN rail, unperforated

1206586

<https://www.phoenixcontact.com/us/products/1206586>



DIN rail, unperforated, Pack of 25 (50 m), similar to EN 60715, material: Steel, galvanized, Standard profile, color: silver

# PTI 4-PE/L/LT - Installation ground terminal block



3214048

<https://www.phoenixcontact.com/us/products/3214048>

## NS 35/15 CU UNPERF 2000MM-VPE 10 - DIN rail, unperforated

1201895

<https://www.phoenixcontact.com/us/products/1201895>



DIN rail, unperforated, Pack of 10 (20 m), similar to EN 60715, material: Copper, uncoated, Standard profile, color: copper-colored

---

## NS 35/15 CAP - End cap

1206573

<https://www.phoenixcontact.com/us/products/1206573>

DIN rail end piece, for DIN rail NS 35/15





# PTI 4-PE/L/LT - Installation ground terminal block



3214048

<https://www.phoenixcontact.com/us/products/3214048>

## NS 35/15-2,3 UNPERF 2000MM-VPE 10 - DIN rail, unperforated

1201798

<https://www.phoenixcontact.com/us/products/1201798>



DIN rail, unperforated, Pack of 10 (20 m), acc. to EN 60715, material: Steel, galvanized, passivated with a thick layer, Standard profile 2.3 mm, color: silver

---

## ZBF 6:UNBEDRUCKT - Zack Marker strip, flat

0808710

<https://www.phoenixcontact.com/us/products/0808710>



Zack Marker strip, flat, Strip, white, unlabeled, can be labeled with: PLOTMARK, CMS-P1-PLOTTER, mounting type: snapped, for terminal block width: 6.2 mm, lettering field size: 5.15 x 6.15 mm, Number of individual labels: 10

# PTI 4-PE/L/LT - Installation ground terminal block



3214048

<https://www.phoenixcontact.com/us/products/3214048>

## ZBF 6 CUS - Zack Marker strip, flat

0825027

<https://www.phoenixcontact.com/us/products/0825027>



Zack Marker strip, flat, Strip, can be ordered: Strip, white, labeled according to customer specifications, mounting type: snap into flat marker groove, for terminal block width: 6.2 mm, lettering field size: 5.15 x 6.15 mm, Number of individual labels: 10

---

## UC-TMF 6 - Marker for terminal blocks

0818140

<https://www.phoenixcontact.com/us/products/0818140>



Marker for terminal blocks, Sheet, white, unlabeled, can be labeled with: BLUEMARK ID COLOR, BLUEMARK ID, BLUEMARK CLED, PLOTMARK, CMS-P1-PLOTTER, mounting type: snapped, for terminal block width: 6.2 mm, lettering field size: 5.6 x 5.1 mm, Number of individual labels: 80

# PTI 4-PE/L/LT - Installation ground terminal block



3214048

<https://www.phoenixcontact.com/us/products/3214048>

## UC-TMF 6 CUS - Marker for terminal blocks

0824646

<https://www.phoenixcontact.com/us/products/0824646>



Marker for terminal blocks, can be ordered: by sheet, white, labeled according to customer specifications, mounting type: snap into flat marker groove, for terminal block width: 6.2 mm, lettering field size: 5.6 x 5.1 mm, Number of individual labels: 80

---

## UCT-TMF 6 - Marker for terminal blocks

0828746

<https://www.phoenixcontact.com/us/products/0828746>



Marker for terminal blocks, Sheet, white, unlabeled, can be labeled with: TOPMARK NEO, TOPMARK LASER, BLUEMARK ID COLOR, BLUEMARK ID, BLUEMARK CLED, THERMOMARK PRIME, THERMOMARK CARD 2.0, THERMOMARK CARD, mounting type: snapped, for terminal block width: 6.2 mm, lettering field size: 5.4 x 4.7 mm, Number of individual labels: 60

# PTI 4-PE/L/LT - Installation ground terminal block



3214048

<https://www.phoenixcontact.com/us/products/3214048>

## UCT-TMF 6 CUS - Marker for terminal blocks

0829665

<https://www.phoenixcontact.com/us/products/0829665>



Marker for terminal blocks, can be ordered: by sheet, white, labeled according to customer specifications, mounting type: snap into flat marker groove, for terminal block width: 6.2 mm, lettering field size: 5.4 x 4.7 mm, Number of individual labels: 60

---

## ZBF 6,LGS:FORTL.ZAHLEN - Zack Marker strip, flat

0808749

<https://www.phoenixcontact.com/us/products/0808749>



Zack Marker strip, flat, Strip, white, labeled, printed horizontally: consecutive numbers 1 ... 10, 11 ... 20, etc. up to 91 ... 100, mounting type: snapped, for terminal block width: 6.2 mm, lettering field size: 5.15 x 6.15 mm, Number of individual labels: 10

# PTI 4-PE/L/LT - Installation ground terminal block



3214048

<https://www.phoenixcontact.com/us/products/3214048>

## ZBF 6,QR:FORTL.ZAHLEN - Zack Marker strip, flat

0808765

<https://www.phoenixcontact.com/us/products/0808765>



Zack Marker strip, flat, Strip, white, labeled, Printed vertically: consecutive numbers 1 ... 10, 11 ... 20, etc. up to 91 ... 100, mounting type: snapped, for terminal block width: 6.2 mm, lettering field size: 5.15 x 6.15 mm, Number of individual labels: 10

---

## ZBF 6,LGS:GERADE ZAHLEN - Zack Marker strip, flat

0810834

<https://www.phoenixcontact.com/us/products/0810834>



Zack Marker strip, flat, Strip, white, labeled, printed horizontally: consecutive even numbers 2 ... 20, 22 ... 40, etc. up to 82 ... 100, mounting type: snapped, for terminal block width: 6.2 mm, lettering field size: 5.15 x 6.15 mm, Number of individual labels: 10

# PTI 4-PE/L/LT - Installation ground terminal block



3214048

<https://www.phoenixcontact.com/us/products/3214048>

## ZBF 6,LGS:UNGERADE ZAHLEN - Zack Marker strip, flat

0810876

<https://www.phoenixcontact.com/us/products/0810876>



Zack Marker strip, flat, Strip, white, labeled, printed horizontally: Odd numbers 1 - 19, 21 - 39, etc. up to 81 - 99, mounting type: snapped, for terminal block width: 6.2 mm, lettering field size: 5.15 x 6.15 mm, Number of individual labels: 10

---

## MPS-MT - Test plug

0201744

<https://www.phoenixcontact.com/us/products/0201744>



Test plug, with solder connection up to 1 mm<sup>2</sup> conductor cross section, number of positions: 1, color: gray

# PTI 4-PE/L/LT - Installation ground terminal block



3214048

<https://www.phoenixcontact.com/us/products/3214048>

## MPS-IH WH - Insulating sleeve

0201663

<https://www.phoenixcontact.com/us/products/0201663>

Insulating sleeve, color: white



---

## MPS-IH RD - Insulating sleeve

0201676

<https://www.phoenixcontact.com/us/products/0201676>

Insulating sleeve, color: red



# PTI 4-PE/L/LT - Installation ground terminal block



3214048

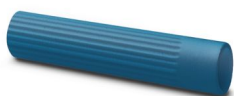
<https://www.phoenixcontact.com/us/products/3214048>

## MPS-IH BU - Insulating sleeve

0201689

<https://www.phoenixcontact.com/us/products/0201689>

Insulating sleeve, color: blue



---

## MPS-IH YE - Insulating sleeve

0201692

<https://www.phoenixcontact.com/us/products/0201692>

Insulating sleeve, color: yellow





# PTI 4-PE/L/LT - Installation ground terminal block



3214048

<https://www.phoenixcontact.com/us/products/3214048>

## MPS-IH GN - Insulating sleeve

0201702

<https://www.phoenixcontact.com/us/products/0201702>

Insulating sleeve, color: green



---

## MPS-IH GY - Insulating sleeve

0201728

<https://www.phoenixcontact.com/us/products/0201728>

Insulating sleeve, color: gray



# PTI 4-PE/L/LT - Installation ground terminal block

3214048

<https://www.phoenixcontact.com/us/products/3214048>

## MPS-IH BK - Insulating sleeve

0201731

<https://www.phoenixcontact.com/us/products/0201731>

Insulating sleeve, color: black



---

## ISH 4/0,5 - Insulating sleeve

3002885

<https://www.phoenixcontact.com/us/products/3002885>

Insulating sleeve, color: gray



# PTI 4-PE/L/LT - Installation ground terminal block



3214048

<https://www.phoenixcontact.com/us/products/3214048>

## ISH 4/1,0 - Insulating sleeve

3002898

<https://www.phoenixcontact.com/us/products/3002898>



Insulating sleeve, color: black

---

## PAI-4-FIX-5/6 BU - Test adapter

3035975

<https://www.phoenixcontact.com/us/products/3035975>



4 mm test adapter, for terminal blocks with 5.2 mm and 6.2 mm pitch

# PTI 4-PE/L/LT - Installation ground terminal block



3214048

<https://www.phoenixcontact.com/us/products/3214048>

## PAI-4-FIX-5/6 OG - Test adapter

3035974

<https://www.phoenixcontact.com/us/products/3035974>



4 mm test adapter, for terminal blocks with 5.2 mm and 6.2 mm pitch

---

## PAI-4-FIX-5/6 YE - Test adapter

3035977

<https://www.phoenixcontact.com/us/products/3035977>



4 mm test adapter, for terminal blocks with 5.2 mm and 6.2 mm pitch

# PTI 4-PE/L/LT - Installation ground terminal block



3214048

<https://www.phoenixcontact.com/us/products/3214048>

## PAI-4-FIX-5/6 RD - Test adapter

3035976

<https://www.phoenixcontact.com/us/products/3035976>



4 mm test adapter, for terminal blocks with 5.2 mm and 6.2 mm pitch

---

## PAI-4-FIX-5/6 GN - Test adapter

3035978

<https://www.phoenixcontact.com/us/products/3035978>



4 mm test adapter, for terminal blocks with 5.2 mm and 6.2 mm pitch

# PTI 4-PE/L/LT - Installation ground terminal block



3214048

<https://www.phoenixcontact.com/us/products/3214048>

## PAI-4-FIX-5/6 BK - Test adapter

3035980

<https://www.phoenixcontact.com/us/products/3035980>



4 mm test adapter, for terminal blocks with 5.2 mm and 6.2 mm pitch

---

## PAI-4-FIX-5/6 GY - Test adapter

3035982

<https://www.phoenixcontact.com/us/products/3035982>



4 mm test adapter, for terminal blocks with 5.2 mm and 6.2 mm pitch

# PTI 4-PE/L/LT - Installation ground terminal block



3214048

<https://www.phoenixcontact.com/us/products/3214048>

## PAI-4-FIX-5/6 VT - Test adapter

3035979

<https://www.phoenixcontact.com/us/products/3035979>



4 mm test adapter, for terminal blocks with 5.2 mm and 6.2 mm pitch

---

## PAI-4-FIX-5/6 BN - Test adapter

3035981

<https://www.phoenixcontact.com/us/products/3035981>



4 mm test adapter, for terminal blocks with 5.2 mm and 6.2 mm pitch

# PTI 4-PE/L/LT - Installation ground terminal block

3214048

<https://www.phoenixcontact.com/us/products/3214048>



## PAI-4-FIX-5/6 WH - Test adapter

3035983

<https://www.phoenixcontact.com/us/products/3035983>



4 mm test adapter, for terminal blocks with 5.2 mm and 6.2 mm pitch

---

## PS-6 - Test plug

3030996

<https://www.phoenixcontact.com/us/products/3030996>



Test plug, Modular test plug, number of positions: 1, color: red



# PTI 4-PE/L/LT - Installation ground terminal block



3214048

<https://www.phoenixcontact.com/us/products/3214048>

## PS-6/2,3MM RD - Test plug

3038736

<https://www.phoenixcontact.com/us/products/3038736>



Test plug, number of positions: 1, color: red

---

## TMT 6 R - Marker for terminal blocks

0816498

<https://www.phoenixcontact.com/us/products/0816498>



Marker for terminal blocks, Roll, white, unlabeled, can be labeled with: THERMOMARK ROLL 2.0, THERMOMARK ROLL, THERMOMARK ROLL X1, THERMOMARK ROLLMASTER 300/600, THERMOMARK X1.2, THERMOMARK S1.1, perforated, mounting type: snapped, snap into flat marker groove, for terminal block width: 6.2 mm, lettering field size: 6.35 x 6.15 mm, Number of individual labels: 16000

# PTI 4-PE/L/LT - Installation ground terminal block



3214048

<https://www.phoenixcontact.com/us/products/3214048>

## TMT 6 R CUS - Marker for terminal blocks

0824488

<https://www.phoenixcontact.com/us/products/0824488>



Marker for terminal blocks, can be ordered: by line, white, labeled according to customer specifications, mounting type: snap into universal marker groove, snap into flat marker groove, for terminal block width: 6.2 mm, lettering field size: 6.35 x 6.15 mm

---

## TMT (EX9,5)R - Marker for terminal blocks

0828295

<https://www.phoenixcontact.com/us/products/0828295>



Marker for terminal blocks, Roll, white, unlabeled, can be labeled with: THERMOMARK E.300 (D)/600 (D), THERMOMARK ROLL 2.0, THERMOMARK ROLL, THERMOMARK ROLL X1, THERMOMARK ROLLMASTER 300/600, THERMOMARK X1.2, mounting type: snapped, snap into tall marker groove, for terminal block width: 30000 mm, lettering field size: 9.5 x 50000 mm, Number of individual labels: 1

## PTI 4-PE/L/LT - Installation ground terminal block

3214048

<https://www.phoenixcontact.com/us/products/3214048>



## US-TM 100 - Marker for terminal blocks

0829255

<https://www.phoenixcontact.com/us/products/0829255>



Marker for terminal blocks, Card, white, unlabeled, can be labeled with: BLUEMARK ID COLOR, BLUEMARK ID, THERMOMARK PRIME, THERMOMARK CARD 2.0, THERMOMARK CARD, mounting type: snapped, lettering field size: 104 x 9.8 mm, Number of individual labels: 13

---

## NLS-CU 3/10 1600MM - Neutral conductor rail

5406430

<https://www.phoenixcontact.com/us/products/5406430>



# PTI 4-PE/L/LT - Installation ground terminal block

3214048

<https://www.phoenixcontact.com/us/products/3214048>



## NLS-CU 3/10 1160MM - Neutral conductor rail

5406429

<https://www.phoenixcontact.com/us/products/5406429>

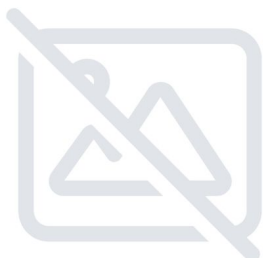


---

## NLS-CU 3/10 148MM 2X5,5 - Neutral conductor rail

5406390

<https://www.phoenixcontact.com/us/products/5406390>



# PTI 4-PE/L/LT - Installation ground terminal block

3214048

<https://www.phoenixcontact.com/us/products/3214048>

## NLS-CU 3/10 SN 55MM 2X5,5 - Neutral busbar

5406304

<https://www.phoenixcontact.com/us/products/5406304>



Neutral busbar, material: Copper, tin-plated

---

## NLS-CU 3/10 SN 300MM 2X5,2 - Neutral busbar

5406221

<https://www.phoenixcontact.com/us/products/5406221>



Neutral busbar

# PTI 4-PE/L/LT - Installation ground terminal block



3214048

<https://www.phoenixcontact.com/us/products/3214048>

## NLS-CU 3/10 SN 175MM - Neutral busbar

5406194

<https://www.phoenixcontact.com/us/products/5406194>



Neutral busbar

---

## NLS-CU 3/10 SN 630MM - Neutral busbar

5406185

<https://www.phoenixcontact.com/us/products/5406185>



Neutral busbar, material: Copper, tin-plated

# PTI 4-PE/L/LT - Installation ground terminal block

3214048

<https://www.phoenixcontact.com/us/products/3214048>

## NLS-CU 3/10 SN 550MM - Neutral busbar

5406184

<https://www.phoenixcontact.com/us/products/5406184>



Neutral busbar, material: Copper, tin-plated

---

## NLS-CU 3/10 SN 1550MM - Neutral busbar

5406170

<https://www.phoenixcontact.com/us/products/5406170>



Neutral busbar, material: Copper, tin-plated

# PTI 4-PE/L/LT - Installation ground terminal block



3214048

<https://www.phoenixcontact.com/us/products/3214048>

## NLS-CU 3/10 SN 93MM - Neutral busbar

5406159

<https://www.phoenixcontact.com/us/products/5406159>



Neutral busbar, material: Copper, tin-plated

---

## NLS-CU 3/10 16.31.19.040-AA - Neutral busbar

5405865

<https://www.phoenixcontact.com/us/products/5405865>



Neutral busbar, material: Copper, tin-plated



# PTI 4-PE/L/LT - Installation ground terminal block

3214048

<https://www.phoenixcontact.com/us/products/3214048>

## NLS-CU 3/10 95MM ZG.160452 - Neutral busbar

5405857

<https://www.phoenixcontact.com/us/products/5405857>



Neutral busbar, material: Copper, tin-plated

---

## NLS-CU 3/10 58MM ZG.155646 - Neutral busbar

5405855

<https://www.phoenixcontact.com/us/products/5405855>



Neutral busbar, material: Copper, tin-plated

# PTI 4-PE/L/LT - Installation ground terminal block



3214048

<https://www.phoenixcontact.com/us/products/3214048>

## NLS-CU 3/10 SN 90MM LANG - Neutral busbar

5405836

<https://www.phoenixcontact.com/us/products/5405836>



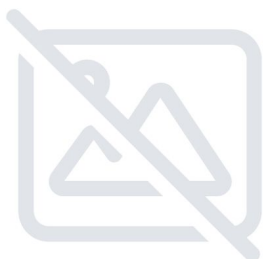
Neutral busbar, material: Copper, tin-plated

---

## NLS-CU 3/10 245MM LG - Neutral busbar

5405831

<https://www.phoenixcontact.com/us/products/5405831>



Neutral busbar, material: Copper, tin-plated

# PTI 4-PE/L/LT - Installation ground terminal block

3214048

<https://www.phoenixcontact.com/us/products/3214048>



## NLS 3/10 AV 134/134 - Neutral busbar

3062870

<https://www.phoenixcontact.com/us/products/3062870>



Angled rail for holding the C-NBB busbar connector

---

## NLS-CU 3/10 SN 150MM 2X3,5 - Neutral busbar

1044718

<https://www.phoenixcontact.com/us/products/1044718>



PEN conductor busbar, 3 mm x 10 mm

# PTI 4-PE/L/LT - Installation ground terminal block

3214048

<https://www.phoenixcontact.com/us/products/3214048>

## NLS-CU 3/10 220MM 4X4,5 1XM4 - Neutral busbar

1013677

<https://www.phoenixcontact.com/us/products/1013677>



PEN conductor busbar, 3 mm x 10 mm

---

## NLS-CU 3/10 SN 1000MM - Neutral busbar

0402174

<https://www.phoenixcontact.com/us/products/0402174>



Neutral busbar, DIN VDE 0611-4: 1991-02, color: silver

# PTI 4-PE/L/LT - Installation ground terminal block

3214048

<https://www.phoenixcontact.com/us/products/3214048>



## NLS-CU 3/10 SN 2000MM - Neutral busbar

0402006

<https://www.phoenixcontact.com/us/products/0402006>



Neutral busbar, DIN VDE 0611-4: 1991-02, material: Copper, tin-plated, color: silver

---

## SZF 1-0,6X3,5 - Screwdriver

1204517

<https://www.phoenixcontact.com/us/products/1204517>



Actuation tool, for ST terminal blocks, also suitable for use as a bladed screwdriver, size: 0.6 x 3.5 x 100 mm, 2-component grip, with non-slip grip

# PTI 4-PE/L/LT - Installation ground terminal block

3214048

<https://www.phoenixcontact.com/us/products/3214048>



## ST-BW - Actuation tool

1207608

<https://www.phoenixcontact.com/us/products/1207608>



Actuation tool, for all 2.5 mm<sup>2</sup> - 4.0 mm<sup>2</sup> spring-cages

---

## AP-NLS N - Cover profile

1013634

<https://www.phoenixcontact.com/us/products/1013634>



Cover profile, height: 300 mm, color: transparent

# PTI 4-PE/L/LT - Installation ground terminal block



3214048

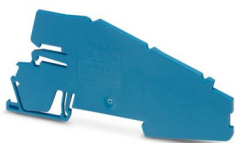
<https://www.phoenixcontact.com/us/products/3214048>

## AB-PTI/3 - Support bracket

3213974

<https://www.phoenixcontact.com/us/products/3213974>

Support bracket, Bracket for busbars, set every 20 cm, pitch: 200 mm, depth: 46 mm, width: 2 mm, height: 103 mm, number of positions: 1, color: blue



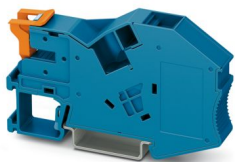
---

## AB-PTI 16-NLS BU - Support bracket

1030138

<https://www.phoenixcontact.com/us/products/1030138>

Support bracket, depth: 46.8 mm, width: 12.2 mm, height: 81.9 mm, color: blue



## PTI 4-PE/L/LT - Installation ground terminal block

3214048

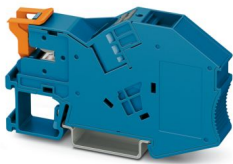
<https://www.phoenixcontact.com/us/products/3214048>



## PTI 16-NLS-FI BU - Installation terminal block

1030131

<https://www.phoenixcontact.com/us/products/1030131>



Installation terminal block, with end bracket function, nom. voltage: 1000 V, nominal current: 70 A, Push-in connection, 1 level, Rated cross section: 16 mm<sup>2</sup>, cross section: 0.5 mm<sup>2</sup> - 25 mm<sup>2</sup>, mounting type: NS 35/7,5, NS 35/15, color: blue

---

## PROJECT COMPLETE - Software

1050453

<https://www.phoenixcontact.com/us/products/1050453>



Intuitive planning and marking software for configuring terminal strips and for professional marking of marking materials for terminal blocks, conductors, cables, devices, and systems. The software is available for download

---

Phoenix Contact 2024 © - all rights reserved  
<https://www.phoenixcontact.com>

Phoenix Contact USA  
586 Fulling Mill Road  
Middletown, PA 17057, United States  
(+717) 944-1300  
[info@phoenixcon.com](mailto:info@phoenixcon.com)