



**Combination knobs,  
Disk, Nut cover**

- Black, RAL 9005
- Dust grey, RAL 7037

**Covers**

(depends on size/type)

- Black, RAL 9005
- Red, RAL F12/0-10
- Yellow, RAL F12/0-1
- Green, RAL F12/0-43
- Blue, RAL 5012
- Pebble grey, RAL 7032
- Dust grey, RAL 7037

**Arrow disk**

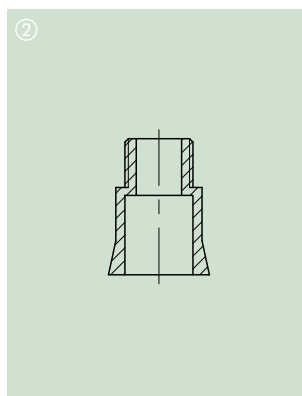
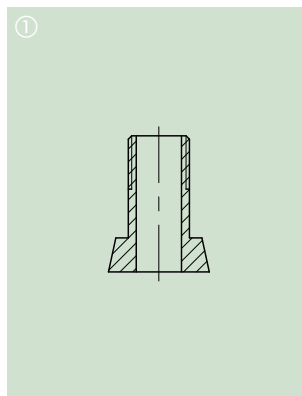
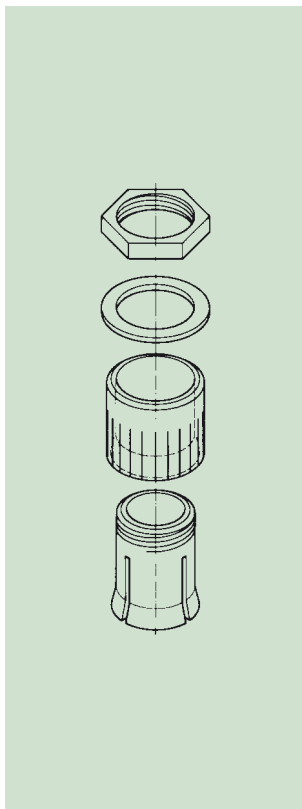
- Black, RAL 9005
- Red, RAL F12/0-10
- Dust grey, RAL 7037

**Dial**

- Transparent, bright surface with/without symbols

**Stator**

- Aluminium, marking black



## THE PRODUCT

The name COMBINATION KNOBS stands for an exceedingly functional range of rotary buttons with a reliable collet fixture system. They offer a versatile range of possible applications as round knobs, wing knobs and spindle-shaped knobs with a large selection of accessories.

## APPLICATIONS

Well-proven for electro-mechanical rotary potentiometers with shaft ends corresponding to DIN 41 591. Measuring and control technology, heating and air conditioning.

## YOUR ADVANTAGE

Tried and tested collet fixture system. Convenient assembly of knobs from the front, easy adjusting (by means of an adjusting key – see accessory page 18). Tight fitting of knobs on the axis. Sizes 10 and 13 have blind holes and screw fixing. From knob size 23 up, through holes ① (sizes 16 + 20 steppt ②, except for axes 4 mm).

Round, wing and spindle-shaped knobs with the same standardized design and with matt surface.

A large variety of functional accessories, e.g. covers in seven colours and transparent dials. Easy push-on assembly.

We also produce our COMBINATION KNOBS in special colours, moq reserved. Please advise us of the colour and quantity you require.

## MATERIAL

Knobs, covers, arrow disks and nut covers: ABS (UL 94 HB).

Dials: Polycarbonate.

Stator: Al-sheet 0.5 mm

with self-adhesive film.

Please refer to specifications on page 29.

# COMBINATION KNOBS



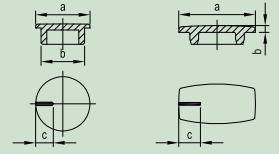
## TYPES

| Knob<br>Ø | Torque (Nm) |          | ROUND KNOB |   | WING KNOB |   | SPINDLE-SHAPED KNOB |   |
|-----------|-------------|----------|------------|---|-----------|---|---------------------|---|
|           | assembly    | function | borehole   |   | borehole  |   | borehole            |   |
| 9         | 0.4         | 0.4      | 4 mm       |    |           |   |                     |   |
| 10        | 0.4         | 0.4      | 3 mm       |    |           |   |                     |   |
|           | 0.4         | 0.4      | 4 mm       |   |           |   |                     |   |
|           | 0.4         | 0.4      | 1/8"       |   |           |   |                     |   |
| 13.5      | 0.5         | 0.5      | 4 mm       |    | –         |   |                     | –   |
|           | 0.7         | 0.6      | 6 mm       |   | 6 mm      |   |                     |   |
| 16        | 0.5         | 0.5      | –          |    | –         |   | 3 mm                |    |
|           | 0.6         | 0.5      | 4 mm       |   | –         |   | 4 mm                |   |
|           | 0.8         | 0.7      | 6 mm       |   | 6 mm      |   | –                   |   |
|           | 0.8         | 0.7      | 1/4"       |   | –         |   | –                   |   |
| 20        | 0.8         | 0.7      | 4 mm       |   | –         |  |                     | –   |
|           | 1.0         | 0.9      | 6 mm       |   | 6 mm      |   |                     |   |
|           | 1.0         | 0.9      | 1/4"       |   | –         |   |                     |   |
| 23        | 1.0         | 0.8      | 4 mm       |  |           | –   | 4 mm                |  |
|           | 1.2         | 1.0      | 6 mm       |   | 6 mm      |   |                     |   |
|           | 1.2         | 1.0      | 1/4"       |   | –         |   |                     |   |
| 31        | 1.8         | 1.6      | 6 mm       |  |           | –   | 6 mm                |  |
|           | 1.8         | 1.6      | 1/4"       |   | –         |   |                     |   |
| 40        | 2.5         | 1.6      | 6 mm       |  |           | –   | 6 mm                |  |
|           | 2.8         | 1.8      | 8 mm       |   | –         |   |                     |   |
| 50        | 3.0         | 1.8      | 6 mm       |  |           | –   |                     | –   |
|           | 3.5         | 2.0      | 8 mm       |   | –         |   |                     |   |

COMBINATION KNOBS

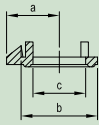
**ROUND KNOB**
**WING KNOB**
**SPINDLE-SHAPED KNOB**
**COVER**


...100 = indicator line white, otherwise in black



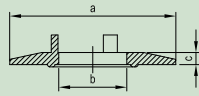
| Knob<br>Ø | Shape                          | Borehole<br>D         | Cover       |             |             |             | without<br>indicator line       |       | with<br>indicator line |             |
|-----------|--------------------------------|-----------------------|-------------|-------------|-------------|-------------|---------------------------------|-------|------------------------|-------------|
|           |                                |                       | Black       | White       | Grey        | White       | Black                           | White | Black                  | White       |
| 9         | <br><b>ROUND KNOB</b>          | 4 mm, with chamfer    | A 25 09 040 | A 26 09 040 |             |             | a = 8.0<br>b = 6.5<br>c = 2.6   |       | A 41 10 000            | A 41 10 100 |
|           |                                |                       |             |             |             | A 41 10 002 |                                 |       | A 41 10 102            |             |
| 10        | <br><b>ROUND KNOB</b>          | 3 mm, with chamfer    | A 25 10 030 | A 26 10 030 | A 25 10 038 | A 26 10 038 |                                 |       | A 41 10 004            | A 41 10 104 |
|           |                                | 1/8", with chamfer    | A 25 10 320 | A 26 10 320 |             |             |                                 |       | A 41 10 005            | A 41 10 105 |
|           |                                | 4 mm, with chamfer    | A 25 10 040 | A 26 10 040 | A 25 10 048 | A 26 10 048 |                                 |       | A 41 10 006            | A 41 10 106 |
| 13.5      | <br><b>ROUND KNOB</b>          | 4 mm, with chamfer    | A 25 13 040 | A 26 13 040 | A 25 13 048 | A 26 13 048 | a = 11.2<br>b = 9.2<br>c = 3.0  |       | A 41 13 000            | A 41 13 100 |
|           |                                | 6 mm, with chamfer    | A 25 13 060 | A 26 13 060 | A 25 13 068 | A 26 13 068 |                                 |       | A 41 13 002            | A 41 13 102 |
|           | <br><b>WING KNOB</b>           | 6 mm, with chamfer    |             | A 28 13 060 |             |             |                                 |       | A 41 13 004            | A 41 13 104 |
|           |                                |                       |             |             |             |             |                                 |       | A 41 13 005            | A 41 13 105 |
| 16        | <br><b>ROUND KNOB</b>          | 4 mm, without chamfer | A 25 16 040 | A 26 16 040 | A 25 16 048 | A 26 16 048 | a = 13.5<br>b = 11.2<br>c = 4.0 |       | A 41 16 000            | A 41 16 100 |
|           |                                | 6 mm, with chamfer    | A 25 16 060 | A 26 16 060 | A 25 16 068 | A 26 16 068 |                                 |       | A 41 16 002            | A 41 16 102 |
|           |                                | 1/4", with chamfer    | A 25 16 630 | A 26 16 630 | A 25 16 638 |             |                                 |       | A 41 16 004            | A 41 16 104 |
| 16        | <br><b>WING KNOB</b>           | 6 mm, with chamfer    |             | A 28 16 060 |             |             |                                 |       | A 41 16 005            | A 41 16 105 |
|           |                                |                       |             |             |             |             |                                 |       | A 41 16 006            | A 41 16 106 |
| 16        | <br><b>SPINDLE-SHAPED KNOB</b> | 3 mm, with chamfer    |             | A 24 16 030 |             |             | a = 14.0<br>b = 1.2<br>c = 4.0  |       | A 50 16 000            | A 50 16 100 |
|           |                                | 4 mm, with chamfer    | A 23 16 040 | A 24 16 040 |             | A 24 16 048 |                                 |       |                        | A 50 16 108 |

## ARROW DISK



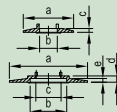
## DISK

...010 = indicator line white



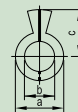
## DIAL

...0 = symbols black  
...9 = symbols silver



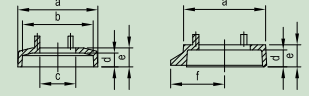
## STATOR

indicator line black



## NUT COVER

...010 = indicator line white  
...018 = indicator line black



a = 7.0  
b = 10.1  
c = 7.0



A 42 10 000



A 42 10 002



A 42 10 008

a = 20.0  
b = 7.0  
c = 1.5



A 44 10 001



A 44 10 060

(only for knob ø 10)

a = 15.5  
b = 14.0  
c = 7.0  
d = 2.9  
e = 3.7



A 75 10 000



A 75 10 018

(only for knob ø 10)

a = 9.0  
b = 13.6  
c = 8.0



A 42 13 000



A 42 13 002



A 42 13 008

a = 26.0  
b = 8.0  
c = 1.5



A 44 13 010



A 44 13 020



A 44 13 039



A 44 13 049



A 44 13 060

a = 17.5  
b = 15.7  
c = 9.0  
d = 3.2  
e = 4.3



A 75 13 000



A 75 13 018

a = 10.5  
b = 16.3  
c = 10.0



A 42 16 000



A 42 16 002



A 42 16 008

a = 23.0  
b = 10.0  
c = 1.3



A 73 16 000

A 73 16 010

a = 31.0  
b = 14.5  
c = 10.0  
d = 2.5  
e = 1.7



A 44 16 001



A 44 16 010



A 44 16 020



A 44 16 039



A 44 16 049



A 44 16 059



A 44 16 060

(ø 16 with moulded-on nut cover)

a=16.0  
b=10.1  
c=15.5

A 60 16 019

a = 19.3  
b = 17.6  
c = 10.0  
d = 3.3  
e = 4.3



A 75 16 000



A 75 16 018

a = 16.4  
b = 14.6  
c = 10.0  
d = 3.3  
e = 4.3  
f = 10.2



A 76 16 000



A 76 16 008

a = 16.0  
b = 14.8  
c = 8.3  
d = 3.3  
e = 4.3



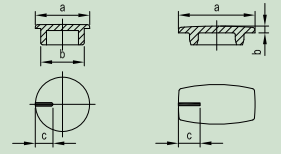
A 51 16 000



A 51 16 008

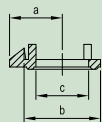
**RUNDKNOPF**
**FLÜGELKNOPF**
**KNEBELKNOPF**
**DECKEL**


...100 = Markierung weiß, ansonsten schwarz

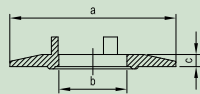
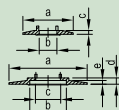
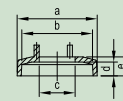
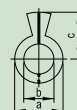


| Größe<br>Ø | Knopfform                | Achsb Bohrung<br>D  | Knopfformen                               |                            |   |             | ohne<br>Markierung              | mit<br>Markierung   |
|------------|--------------------------|---|---|----------------------------|---|-------------|---------------------------------|---|
|            |                          |   |   |                            |   |             |                                 |   |
| 20         | <b>RUND-<br/>KNOPF</b>   | 4 mm, durchgehend<br>6 mm, abgesetzt<br>1/4", abgesetzt     | A 25 20 040<br>A 25 20 060<br>A 25 20 630 | A 26 20 040<br>A 26 20 060 | A 25 20 068                               | A 26 20 068 | a = 17,5<br>b = 15,2<br>c = 5,5 | <br>A 41 20 000 A 41 20 100<br>A 41 20 002 A 41 20 102<br>A 41 20 004 A 41 20 104<br>A 41 20 005<br>A 41 20 006 A 41 20 106<br>A 41 20 007 A 41 20 107<br>A 41 20 008 A 41 20 108             |
|            | <b>FLÜGEL-<br/>KNOPF</b> | 6 mm, abgesetzt   | A 27 20 060                               |                            |   |             |                                 |   |
| 23         | <b>RUND-<br/>KNOPF</b>   | 4 mm, durchgehend<br>6 mm, durchgehend<br>1/4", durchgehend | A 25 23 040<br>A 25 23 060<br>A 25 23 630 | A 26 23 040<br>A 26 23 060 | A 25 23 048<br>A 25 23 068<br>A 25 23 638 | A 26 23 068 | a = 20,4<br>b = 17,4<br>c = 6,5 | <br>A 41 23 000 A 41 23 100<br>A 41 23 002 A 41 23 102<br>A 41 23 004 A 41 23 104<br>A 41 23 005 A 41 23 105<br>A 41 23 006 A 41 23 106<br>A 41 23 007 A 41 23 107<br>A 41 23 008 A 41 23 108 |
|            | <b>KNEBEL-<br/>KNOPF</b> | 4 mm, abgesetzt<br>6 mm, abgesetzt                          |   | A 24 23 040<br>A 24 23 060 |   | A 24 23 068 |                                 |   |
| 31         | <b>RUND-<br/>KNOPF</b>   | 6 mm, durchgehend<br>1/4", durchgehend                      | A 25 31 060<br>A 25 31 630                | A 26 31 060                | A 25 31 068                               | A 26 31 068 | a = 28,4<br>b = 26,0<br>c = 9,0 | <br>A 41 31 000 A 41 31 100<br>A 41 31 002 A 41 31 102<br>A 41 31 005<br>A 41 31 006<br>A 41 31 007<br>A 41 31 008 A 41 31 108  |
|            | <b>KNEBEL-<br/>KNOPF</b> | 6 mm, abgesetzt   |   | A 24 31 060                |   | A 24 31 068 |                                 |   |

KOMBIKNÖPFE

**PFEILSCHEIBE**
**SCHEIBE**
**SKALENSCHLEIBE**
**STATOR**
**MUTTERABDECKUNG**


...010 = Markierung weiß


 ...0 = Symbole schwarz  
 ...9 = Symbole silber

 Markierung  
 schwarz

 a = 13,0  
 b = 20,0  
 c = 12,0


A 42 20 000



A 42 20 002



A 42 20 008

 a = 36,0  
 b = 12,0  
 c = 1,5


A 44 20 001



A 44 20 010



A 44 20 059



A 44 20 060

 a=20,0  
 b=10,1  
 c=18,0

A 60 20 019

 a = 14,3  
 b = 23,0  
 c = 16,5


A 42 23 000



A 42 23 002



A 42 23 008

 a = 31,0  
 b = 16,5  
 c = 1,3


A 73 23 010

 a = 40,0  
 b = 16,3  
 c = 1,3


A 44 23 001



A 44 23 010



A 44 23 020



A 44 23 039



A 44 23 049



A 44 23 060

 a=23,0  
 b=10,2  
 c=20,0

A 60 23 019

 a = 23,3  
 b = 20,0  
 c = 13,7  
 d = 3,3  
 e = 4,3


A 51 23 000



A 51 23 008

 a = 19,5  
 b = 31,0  
 c = 16,5


A 42 31 000



A 42 31 002



A 42 31 008

 a = 40,0  
 b = 16,5  
 c = 1,6


A 73 31 000

A 73 31 010

 a = 49,9  
 b = 16,5  
 c = 1,5


A 44 31 001



A 44 31 010



A 44 31 060

 a=31,0  
 b=11,0  
 c=25,0

A 60 31 019

 a = 31,1  
 b = 28,0  
 c = 15,5  
 d = 3,3  
 e = 4,8

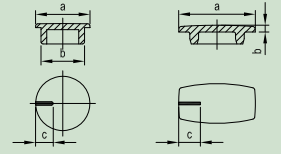

A 51 31 000



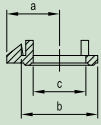
A 51 31 008

**RUNDKNOPF**
**KNEBELKNOPF**
**DECKEL**

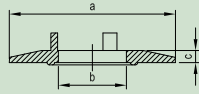

...100 = Markierung weiß, ansonsten schwarz

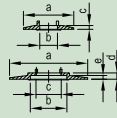


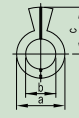
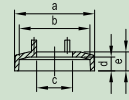
| Größe<br>Ø | Knopfform                    | Achsb Bohrung<br>D | Knopfvarianten |             |             |             | a    | b    | c    | Markierung         |                   |
|------------|------------------------------|--------------------|----------------|-------------|-------------|-------------|------|------|------|--------------------|-------------------|
|            |                              |                    | 1              | 2           | 3           | 4           |      |      |      | ohne<br>Markierung | mit<br>Markierung |
| 40         | <b>RUND-<br/>KNOPF</b><br>   | 6 mm, durchgehend  | A 25 40 060    | A 26 40 060 | A 25 40 068 | A 26 40 068 | 37,4 | 34,4 | 12,5 | ● A 41 40 000      | A 41 40 100       |
|            |                              | 8 mm, durchgehend  | A 25 40 080    | A 26 40 080 |             |             |      |      |      | ● A 41 40 002      | A 41 40 102       |
| 40         | <b>KNEBEL-<br/>KNOPF</b><br> | 6 mm, abgesetzt    |                | A 24 40 060 |             | A 24 40 068 | 37,9 | 1,6  | 13,0 | ● A 50 40 000      | A 50 40 100       |
|            |                              |                    |                |             |             |             |      |      |      | ● A 50 40 008      | A 50 40 108       |
| 50         | <b>RUND-<br/>KNOPF</b><br>   | 6 mm, durchgehend  | A 25 50 060    | A 26 50 060 | A 25 50 068 |             | 47,4 | 44,4 | 14,5 | ● A 41 50 000      | A 41 50 100       |
|            |                              | 8 mm, durchgehend  | A 25 50 080    |             |             |             |      |      |      | ● A 41 50 007      | A 41 50 107       |
|            |                              |                    |                |             |             |             |      |      |      | ● A 41 50 008      | A 41 50 108       |

**PFEILSCHEIBE**

**SCHEIBE**

...010 = Markierung weiß


**SKALENSCHEIBE**

 ...0 = Symbole schwarz  
 ...9 = Symbole silber

**STATOR**

 Markierung  
 schwarz

**MUTTERABDECKUNG**

 a = 24,5  
 b = 40,0  
 c = 25,0


A 42 40 000



A 42 40 008

 a = 50,1  
 b = 24,0  
 c = 1,8


A 73 40 000

A 73 40 010

 a = 61,0  
 b = 24,0  
 c = 1,9


A 44 40 001

 a = 40,3  
 b = 36,8  
 c = 20,0  
 d = 3,1  
 e = 4,6


A 51 40 000



A 51 40 008



## FÜR RUND- / FLÜGEL- / KNEBELKNÖPFE / COM-KNOBS

| Bestell-Nummer | Artikel   | Ausführung / Verwendung  | Maße in mm           | Abbildung |
|----------------|---|--|----------------------|-----------|
| A 61 16 010    | Feststeller mit Stator  | Nur für Rund- und Flügelknöpfe Größe 16 mit Skalenscheibe. Glasklar, Markierung schwarz.   |                      |           |
| A 61 00 000    | Feststeller   | Universell für Rund- und Flügelknöpfe sowie COM-KNOBS mit Skalenscheibe verwendbar.  | <p>Montageplatte</p> |           |
|                | Rundknöpfe $\phi$<br>D <sub>1</sub> D <sub>2</sub> D <sub>3</sub> | Justierschlüssel   |                      |           |
| A 64 02 005    | 10 13,5 16  | Für genaues Einstellen von Kombiknöpfen (Rundknöpfe) mit Markierungsstrich, Skalen- und Pfeilscheiben. Problemlose Knopfmontage.   |                      |           |
| A 64 03 005    | 20 23 31  |  |                      |           |
|                | G $\phi$  | Rundmutter   |                      |           |
| A 62 07 009    | M 7 x 0,75 13,5   | Zur Befestigung der Potentiometer an Blenden. Passt unter Knopf und Mutterabdeckung (Rundknöpfe / Flügelknöpfe / Knebelknöpfe / COM-KNOBS $\phi$ 10 / 13,5 / 16 / 20 / 23 / 31 / 40 / 50). |                      |           |
| A 62 10 009    | M 10 x 0,75 12,5  |  |                      |           |
| A 62 95 009    | 3/8" - 32G 12,5   |  |                      |           |
| A 63 00 000    | Steckschlüssel  | Zum Anziehen der Rundmutter.   |                      |           |
|                | Bohrung   | Verdrehungsschutz  |                      |           |
| A 66 00 064    | 6 / 4,6   | Ermöglicht verdrehungssichere Knopfmontage auf Profilachsen 6 / 4,6 mm. Geeignet für Rund- und Flügelknöpfe $\phi$ 20 bis 50 mit 6 mm Achsbohrung (nicht für COM-KNOBS passend).           |                      |           |