



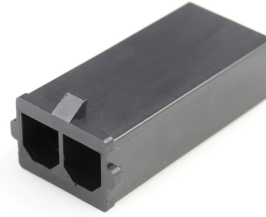
Part Number : [436802002](#)

Product Description : 7.50mm Pitch Sabre Plug Crimp Housing, UL 94V-0, 2 Circuits, Black, Black

Series Number : 43680

Status : Active

Product Category : Connector Housings



Documents & Resources

Drawings

[Drawing 436802002_sd.pdf](#)

3D Models and Design Files

[3D Model 436802002_stp.zip](#)

Specifications


[Packaging Specification PK-43680-001-001.pdf](#)

[Product Specification PS-44441-9999-001.pdf](#)

[Test Summary 444410000-TS-000.pdf](#)

Product Environment Compliance

Compliance

GADSL/IMDS	Compliant with Exemption 44
China RoHS	
EU ELV	Not Relevant
Low-Halogen Status	Low-Halogen per IEC 61249-2-21
REACH SVHC	Not Contained per D(2024)4144-DC (27 June 2024)
EU RoHS	Compliant per EU 2015/863

[Multiple Part Product Compliance Statements](#)

- Eu RoHS
- REACH SVHC
- Low-Halogen

[Multiple Part Industry Compliance Documents](#)

- IPC 1752A Class C

- IPC 1752A Class D
- Molex Product Compliance Declaration
- IEC-62474
- chemSHERPA (xml)

EU RoHS Certificate of Compliance

Part Details

General

Status	Active
Category	Connector Housings
Series	43680
Description	7.50mm Pitch Sabre Plug Crimp Housing, UL 94V-0, 2 Circuits, Black, Black
Application	Power, Wire-to-Wire
Comments	Positive mating lock and integrated Terminal Position Assurance (TPA) standard.
Product Family	Sabre Power Connector
Product Name	Sabre
UPC	800754366496

Agency

CSA	LR19980
UL	E29179

Physical

Circuits (maximum)	2
Color - Resin	Black
Flammability	94V-0
Gender	Plug
Glow-Wire Capable	No
Keying to Mating Part	Yes
Lock to Mating Part	Yes
Material - Resin	Nylon
Net Weight	3.236/g
Number of Rows	1

Packaging Type	Bag
Panel Mount	No
Pitch - Mating Interface	7.50mm
Polarized to Mating Part	Yes
Stackable	No
Temperature Range - Operating	-40° to +75°C

Solder Process Data

Lead-Free Process Capability	N/A
------------------------------	-----

Mates With / Use With

Mates with Part(s)

Description	Part Number
7.50mm Pitch Sabre Receptacle Crimp Housing, UL 94V-0, 2 Circuits, Black	<u>444412002</u>

Use with Part(s)

Description	Part Number
Sabre Male Crimp Terminals	<u>43178</u>

Application Tooling

Global

Description	Part Number
Manual Extraction Tool	<u>638130800</u>