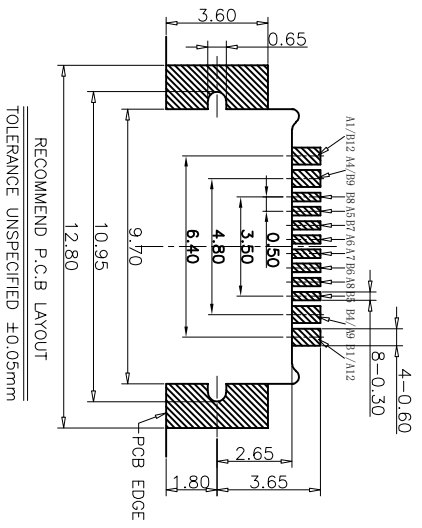
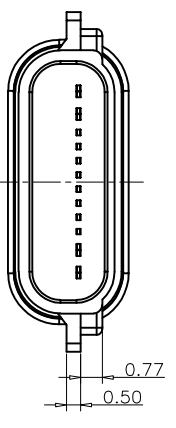
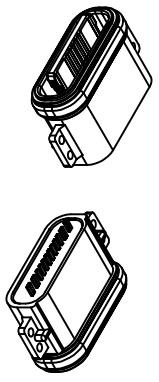




REV.	ECN NO.	DESCRIPTION	DATE	DESIGN



- NOTES:
- SPECIFICATION:
- CURRENT RATING: 3.0 A
 - VOLTAGE RATING: 3.0 V
 - VBUS & GND PINS AND OTHER PINS: 40mΩ/PIN MAX SHIELD: 50mΩ/MAX
 - LCR MAX. CHANGE OF ALL PINS: 10Ωm
 - INSULATION RESISTANCE: 100MΩ MIN
 - DIELECTRIC WITHSTAND VOLTAGE AC 100V FOR 1MINUTE
 - INSERTION FORCE: 0.5-2.0kgf
 - UNMATING FORCE: 0.8-2.0kgf
 - DURABILITY: 10000 CYCLES
 - OPERATING TEMPERATURE: -35°C~+85°C
 - THE PEAK TEMPERATURE ON THE BOARD SHALL BE MAINTAINED FOR 10 SECONDS AT 210-230°C
 - WATERPROOF: IP-X7.

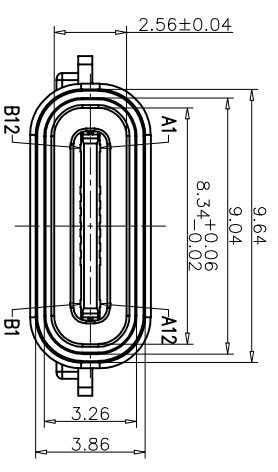
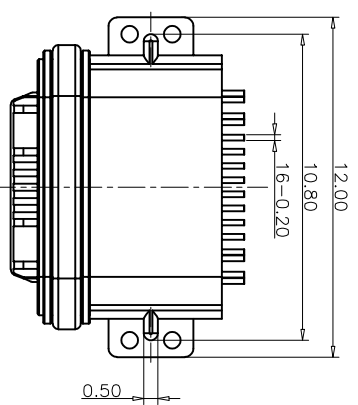
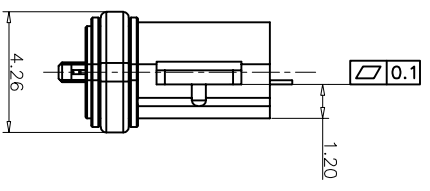
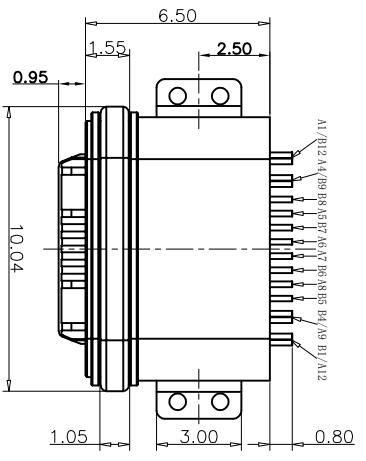


TABLE:

NO	PART	QTY	Material
1	SHELL	1	ZINC ALLOG,Ni30u"Min PLATED
2	CONTACT	16	C7025 TINBOU"/Au3u"/Ni30u"PLATED
3	MID PLATE	1	SUS301.NO PLATING
4	HOUSING	1	LCPEI130U UI94 V-0 BLACK
5	WATERPROOF RING	1	SILICONE(S)/60-65A) UI94 V-0 BLACK

USB TYPE C PIN ASSIGNMENTS

PIN NUMBER	SIGNAL NAME	PIN NUMBER	SIGNAL NAME
A1	GND	B12	GND
A4	VBUS	B9	VBUS
A5	CC1	B8	SRU2
A6	DP1	B7	DP2
A7	DN1	B6	DP2
A8	SBU1	B5	CC2
A9	VBUS	B4	VBUS
A12	GND	B1	GND

TOLERANCE	NAME (INTENDED USE)
X.X ±0.30	X.X ±10'
.XX ±0.20	.X' ± 8'
.XXX ±0.10	.XX' ± 5'
UNITS	mm
MATERIAL	---
FINISH	---

PART NO.	F23-0107C161F26512-01	TITLE:	TYPE C 16P防水母座板上.6.5沉板1.2A
DESIGN:	ZXM	DRAWG NO.	F23-0107C161F26512-01
APPD:	---	SCALE	1:1
		SHEET	1/2
		REV.	A



FURUO 广东富盈兴业精密科技实业有限公司
Shenzhen Furou Precision Electronic Technology Co., Ltd.