

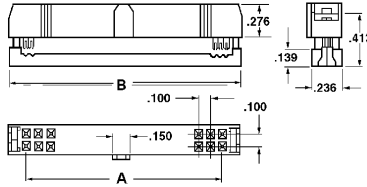
**Material:**  
 Contact: Gold flash over nickel  
 Housing: PBT & glass-fiber UL94V-0

## CONNECTOR SPECIFICATIONS

**Electrical:**  
 Contact res.: 15mΩ max.@1 Amp DC  
 Insulation res.: 1000MΩ min.@500VDC  
 Contact rating: 1 Amp

### .100" RIBBON CONNECTOR

Suitable for .050" standard ribbon cable. Complete with cable strain reliefs. Standard with polarizing rib.



- 35-010-0** 10-position
- 35-014-0** 14-position
- 35-016-0** 16-position
- 35-020-0** 20-position
- 35-024-0** 24-position
- 35-026-0** 26-position
- 35-034-0** 34-position
- 35-040-0** 40-position
- 35-050-0** 50-position
- 35-060-0** 60-position



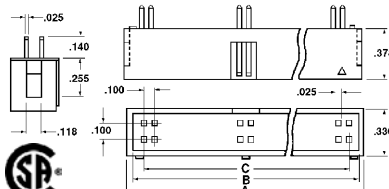
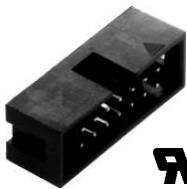
Pos	A	B
10	10.16	17.20
14	15.24	22.50
16	17.78	24.94
20	22.86	30.08
24	27.94	35.16
26	30.48	37.58
34	40.64	47.80
40	48.26	50.42
50	60.96	68.28
60	73.66	80.96

**Use -2 for Display Package**

**35-000-0** polarizing key that snaps into any contact position.

### PC BOX CONNECTOR

Vertical PC mount connectors mate with connectors above.

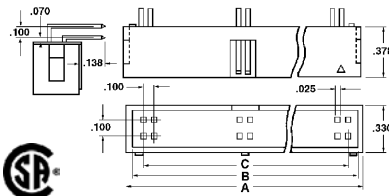
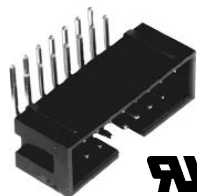


- 35-510-0** 10-position
- 35-514-0** 14-position
- 35-516-0** 16-position
- 35-520-0** 20-position
- 35-524-0** 24-position
- 35-526-0** 26-position
- 35-534-0** 34-position
- 35-540-0** 40-position
- 35-550-0** 50-position
- 35-560-0** 60-position

Pos	A	B	C
10	.799	.713	0.4
14	.999	.913	0.6
16	1.099	1.013	0.7
20	1.299	1.213	0.9
24	1.499	1.413	1.1
26	1.599	1.513	1.2
34	1.999	1.913	1.6
40	2.299	2.213	1.9
50	2.799	2.713	2.4
60	3.299	3.213	2.9

### RIGHT ANGLE PC BOX CONNECTOR

Right angle PC connectors mate with connectors type 35-0xx

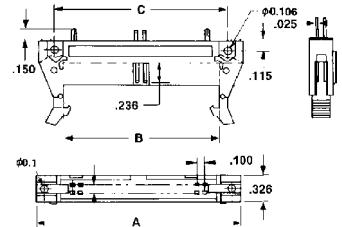


- 35-610-0** 10-position
- 35-614-0** 14-position
- 35-616-0** 16-position
- 35-620-0** 20-position
- 35-626-0** 26-position
- 35-634-0** 34-position
- 35-640-0** 40-position
- 35-650-0** 50-position

Pos	A	B	C
10	.799	.713	0.4
14	.999	.913	0.6
16	1.099	1.013	0.7
20	1.299	1.213	0.9
26	1.599	1.513	1.2
34	1.999	1.913	1.6
40	2.299	2.213	1.9
50	2.799	2.713	2.4

### PC BOX CONNECTORS (with ejectors)

Vertical PC mount connectors with ejector latch



- 35-710-0** 10-position
- 35-714-0** 14-position
- 35-716-0** 16-position
- 35-720-0** 20-position
- 35-724-0** 24-position
- 35-726-0** 26-position
- 35-734-0** 34-position
- 35-740-0** 40-position
- 35-750-0** 50-position
- 35-760-0** 60-position

Pos	A	B	C
10	1.26	.707	.850
14	1.46	.907	1.05
16	1.56	1.007	1.15
20	1.76	1.207	1.35
24	1.96	1.407	1.55
26	2.06	1.507	1.65
34	2.46	1.907	2.05
40	2.76	2.207	2.35
50	3.26	2.707	2.85
60	3.76	3.207	3.35

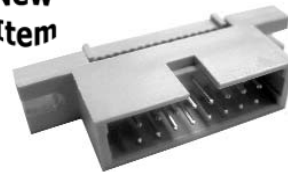


### IDC BOX CONNECTORS

IDC box connectors without ejectors



New Item



- 35-1014-0** 14-position
- 35-1016-0** 16-position
- 35-1020-0** 20-position
- 35-1024-0** 24-position
- 35-1026-0** 26-position
- 35-1034-0** 34-position
- 35-1040-0** 40-position
- 35-1050-0** 50-position

IDC box connectors with short ejectors



New Item

- 35-1114-0** 14-position
- 35-1116-0** 16-position
- 35-1120-0** 20-position
- 35-1124-0** 24-position
- 35-1126-0** 26-position
- 35-1134-0** 34-position
- 35-1140-0** 40-position
- 35-1150-0** 50-position

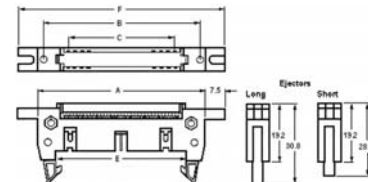
IDC box connectors with long ejectors



New Item

- 35-1214-0** 14-position
- 35-1216-0** 16-position
- 35-1220-0** 20-position
- 35-1224-0** 24-position
- 35-1226-0** 26-position
- 35-1234-0** 34-position
- 35-1240-0** 40-position
- 35-1250-0** 50-position

New Item



New Item

Pos	A	B	C	E	F
10	32.00	25.40	10.16	17.96	47.08
14	37.08	33.02	15.24	23.04	52.18
16	39.62	35.45	17.78	25.58	54.84
20	44.78	40.60	22.86	30.66	59.90
24	49.70	45.50	27.86	35.74	65.22
26	52.32	48.26	30.48	38.28	67.24
34	62.48	58.42	40.64	48.44	77.48
40	70.10	60.96	48.26	56.60	85.36
50	82.80	78.74	60.96	68.76	97.90