

1SNK900607R0000 ✓ ACTIVE

ENTRELEC | ENTRELEC HTP600

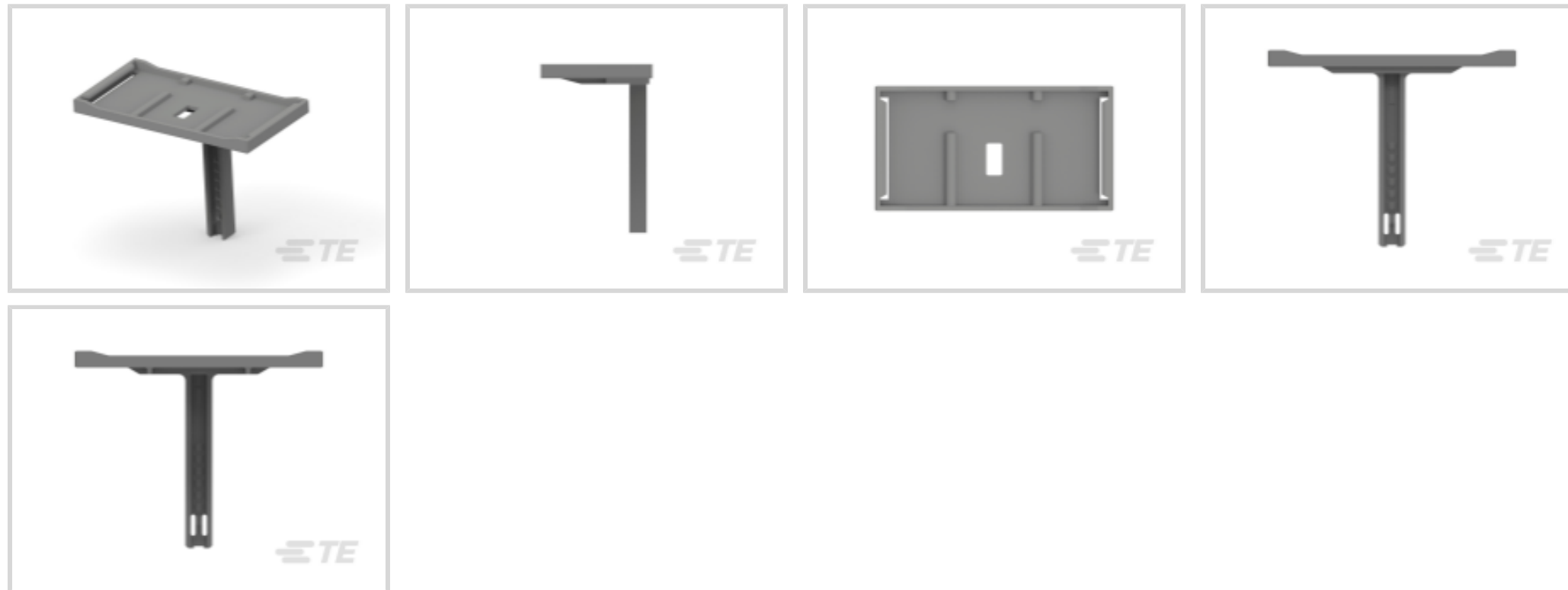
TE Internal #: 1SNK900607R0000

Label Holder, Dark Gray, -55 – 110 °C [-67 – 230 °F], UL 94V-0,
ENTRELEC HTP600, Terminal Block & Strip Marking Accessories

[View on TE.com >](#)



Connectors > Terminal Blocks & Strips > Terminal Block & Strip Accessories > Terminal Block & Strip Marking Accessories



Marking Product Type: **Label Holder**

Primary Product Color: **Dark Gray**

Operating Temperature Range: **-55 – 110 °C [-67 – 230 °F]**

UL Flammability Rating: **UL 94V-0**

Features

Product Type Features

Marking Product Type	Label Holder
----------------------	--------------

Body Features

Primary Product Material	Polyamide
Product Weight	1.1 g[.038 oz]
Primary Product Color	Dark Gray

Dimensions

Product Depth	29.5 mm
Product Width	19.5 mm[.768 in]
Product Length	35.65 mm[1.4 in]
Product Height	37.25 mm[.7 in]

Usage Conditions

Installation Temperature Range	-5 – 40 °C[23 – 104 °F]
Operating Temperature Range	-55 – 110 °C[-67 – 230 °F]

Industry Standards

UL Flammability Rating	UL 94V-0
------------------------	----------



Product Compliance

[For compliance documentation, visit the product page on TE.com>](#)

EU RoHS Directive 2011/65/EU	Compliant
EU ELV Directive 2000/53/EC	Compliant
China RoHS 2 Directive MIIT Order No 32, 2016	No Restricted Materials Above Threshold
EU REACH Regulation (EC) No. 1907/2006	Current ECHA Candidate List: JUNE 2024 (241) Candidate List Declared Against: JUNE 2024 (241) Does not contain REACH SVHC
Halogen Content	Low Halogen - Br, Cl, F, I < 900 ppm per homogenous material. Also BFR/CFR/PVC Free
Solder Process Capability	Not reviewed for solder process capability

Product Compliance Disclaimer

This information is provided based on reasonable inquiry of our suppliers and represents our current actual knowledge based on the information they provided. This information is subject to change. The part numbers that TE has identified as EU RoHS compliant have a maximum concentration of 0.1% by weight in homogenous materials for lead, hexavalent chromium, mercury, PBB, PBDE, DBP, BBP, DEHP, DIBP, and 0.01% for cadmium, or qualify for an exemption to these limits as defined in the Annexes of Directive 2011/65/EU (RoHS2). Finished electrical and electronic equipment products will be CE marked as required by Directive 2011/65/EU. Components may not be CE marked. Additionally, the part numbers that TE has identified as EU ELV compliant have a maximum concentration of 0.1% by weight in homogenous materials for lead, hexavalent chromium, and mercury, and 0.01% for cadmium, or qualify for an exemption to these limits as defined in the Annexes of Directive 2000/53/EC (ELV). Regarding the REACH Regulation, the information TE provides on SVHC in articles for this part number is based on the latest European Chemicals Agency (ECHA) 'Guidance on requirements for substances in articles' posted at this URL: <https://echa.europa.eu/guidance-documents/guidance-on-reach>

Compatible Parts

TE Part # 1SNK900001R0000
BAM4

TE Part # 1SNK900002R0000
BAZ1

TE Part # 1SNK900102R0000
BAZH1

TE Part # 1SNK900631R0000
MCLH-R1



TE Part # 1SNK900634R0000
MCLH-R1-YL



TE Part # 1SNA235155R2600
PIB2-TT

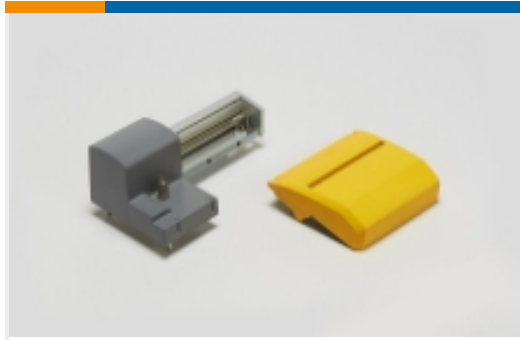


TE Part # 1SNA178430R0500
CARTE 54 RCPEB



TE Part # 1SNA178431R2200
EPR1

Also in the Series | ENTRELEC HTP600



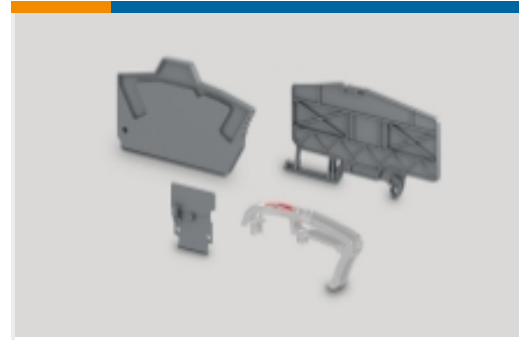
Printer Accessories(13)



Printer Ribbons(4)



Printers(1)

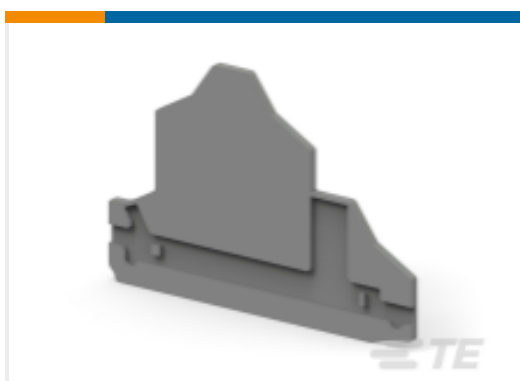


Terminal Block & Strip Insulating
Accessories(3)



Terminal Block & Strip Marking
Accessories(115)

Customers Also Bought



TE Part #1SNK705960R0000
EK2.5-D2



TE Part #1SNK900605R0000
LH.



TE Part #1SNA115129R1400
M16/12



TE Part #1SNA115647R2300
M4/8.D2.SFD



TE Part #1SNA115660R0400
M4/8.SN1



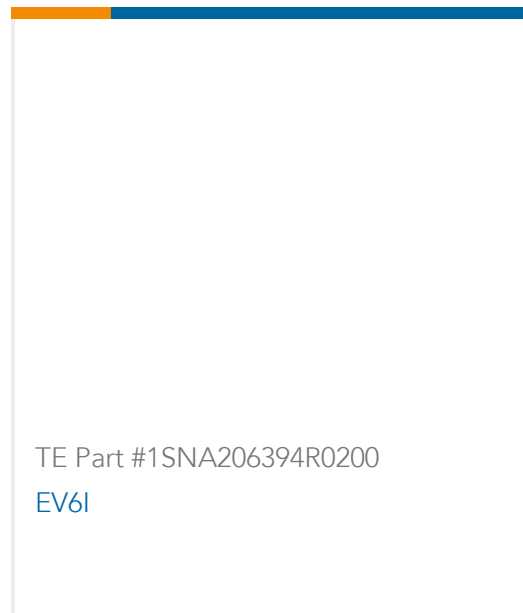
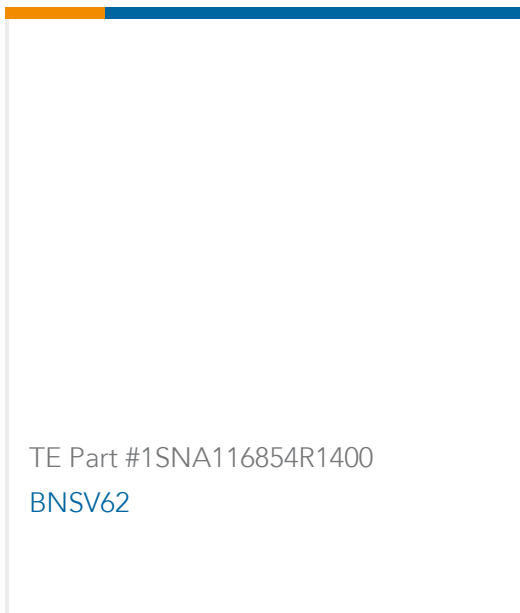
TE Part #1SNA115685R1200
M6/8.RS



TE Part #1SNA163311R2200
PC61-10



TE Part #1SNK900654R0000
SC-JB8-4



Documents

CAD Files

[3D PDF](#)

[3D](#)

Customer View Model

[ENG_CVM_CVM_1SNK900607R0000_C.2d_dxf.zip](#)

English

Customer View Model

[ENG_CVM_CVM_1SNK900607R0000_C.3d_igs.zip](#)

English

Customer View Model

[ENG_CVM_CVM_1SNK900607R0000_C.3d_stp.zip](#)

English

By downloading the CAD file I accept and agree to the [Terms and Conditions](#) of use.

Datasheets & Catalog Pages

[ENTRELEC Terminal Block - Master Catalog](#)

[ENTRELEC Terminal Block - Master Catalog](#)

English

[LH-R1](#)

English

[SNK SERIES TERMINAL BLOCKS](#)

English

[ENTRELEC Terminal Blocks Catalogue \(RUS\)](#)