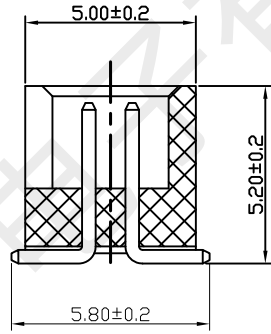
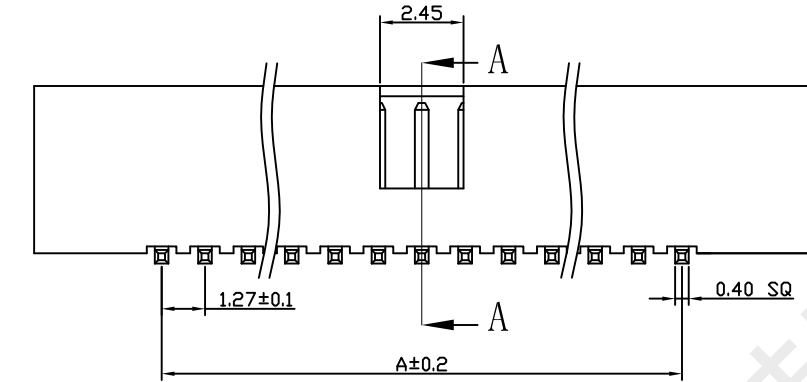
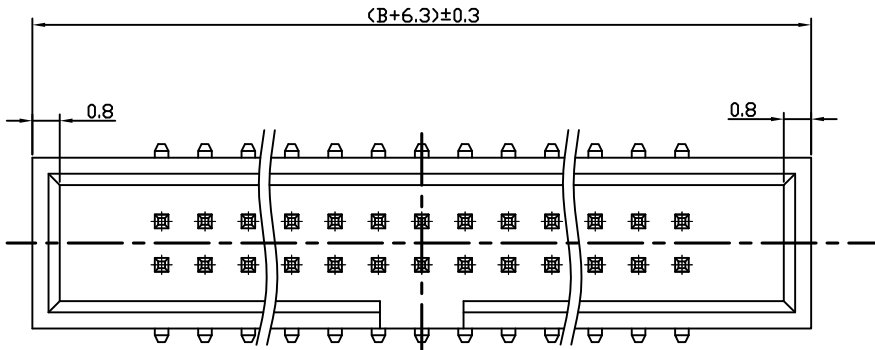
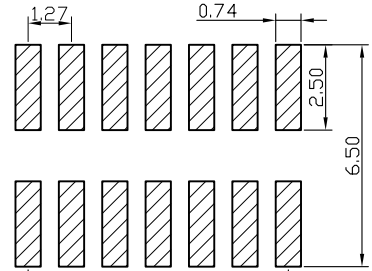


1 2 3 4 5 6 7 8 9

G
F
E
D
C
B
A



A-A SECTION



RECOMMEND P. C. B LAYOUT
PCB TOLERANCE: ±0.05 (TOP VIEW)

SPECIFICATIONS

- Current Rating: 1.0 Amps
- Withstanding Voltage: AC 500V
- Insulation Resistance: 1000MΩ Min
- Contact Resistance: 20mΩ Max
- Operation Temperature: -40° to +105°
- Insulator Material: Polyester (UL94V-0)
- Contact Material: Brass
- Standard: PA6T
- Contact Plating: Gold Flash
- Max. Processing Temp: 240° C for 30-60 seconds
(260° C for 5 seconds)

No. of	DIM. A	DIM. B	No. of	DIM. A	DIM. B	No. of	DIM. A	DIM. B
—	—	—	22	12.70	13.97	42	25.40	26.67
—	—	—	24	13.97	15.24	44	26.67	27.94
6	2.54	3.81	26	15.24	16.51	46	27.94	29.21
8	3.81	5.08	28	16.51	17.78	48	29.21	30.48
10	5.08	6.35	30	17.78	19.05	50	30.48	31.75
12	6.35	7.62	32	19.05	20.32	52	31.75	33.02
14	7.62	8.89	34	20.32	21.59	54	33.02	34.29
16	8.89	10.16	36	21.59	22.86	56	34.29	35.56
18	10.16	11.43	38	22.86	24.13	58	35.56	36.83
20	11.43	12.70	40	24.13	25.40	60	36.83	38.10

 深圳市韩下电子有限公司

UNLESS OTHERWISE SPECIFIED TOLERANCE				DRAWN NAME: HX JN1.27-2x10 TP H4.9			
X	: ±0.30	X°	: ±5°	SIZE	A4	SCALE	N:1
X.X	: ±0.25	X.X°	: ±1°	REV	A	UNIT	mm
X.XX	: ±0.20	X.XX°	: ±0.5°	PROJECT		PAGE 1/1	
DRAW:	黄彬	2023/11/09	CHECKED:	张伟	2023/11/09	APPROVED:	罗小春

1 2 3 4 5 6 7 8 9