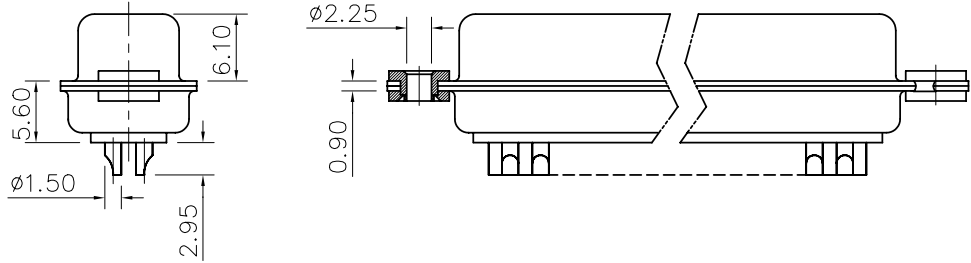
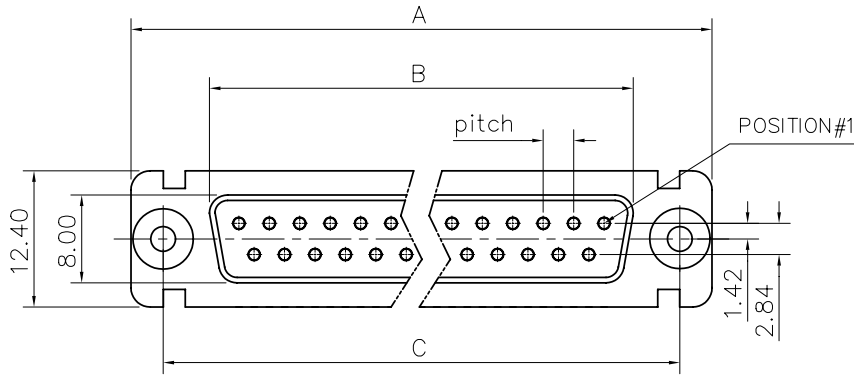


This document is the property of Amphenol Corporation and is delivered on the express condition that it is not to be disclosed, reproduced or used, in whole or in part, for manufacture or sale by anyone other than Amphenol Corporation without its prior consent. It is not to be used to disclose or to use any information in this document.



# Customer drawing

DIM.S SHELL	A	B	C	Pitch
9	30.70	16.40	25.00	2.74
15	39.00	24.80	33.30	2.74
25	52.90	38.50	47.00	2.77
37	69.20	54.90	63.50	2.77

REVISIONS				
SYM	ECN	DESCRIPTION	DATE	APPROVED
A			01/03/08	

## D-SUB TECHNICAL DATA

SHELL : Steel 2.5um(100u") min tin over 1.25um(50u") min nickel  
 BODY : Glass filled thermoplastic.  
 Flame retardant to UL94 V-0 Color Black  
 CONTACTS : Brass  
 0.1um(4u") min gold over 1.25um(50u") min nickel  
 FLOAT NUT : Brass ,100u"min tin over 50u" nickel  
 ELECTRICAL : Voltage rating :300 V RMS at 50 Hz  
 Current rating 7.5A.  
 Insulation resistance >5000 M Ohms  
 Contact resistance 20 mOhms max.  
 CLIMATIC : Temperature range -55 °C up to 85°C  
 Damp heat 21 days(40 °C-95% HR)  
 MACHANICAL : Mating force 0.34kg Max  
 Unmating force 0.021kg min  
 MARKING : Amphenol...(Series No.)  
 Commercial reference  
 Manufacturing date

## PRODUCT CODE

# L 77D X F XX S

L: RoHS Compliance

Contact type:  
S: Socket

77D: tinned shell  
for receptacle

Configuration: 09,15,25,37

Shell Size :E,A,B,C

F=Float mounting

UNLESS OTHERWISE SPECIFIED TOLERANCES		APPROVAL		DATE
	U.S.	METRIC	DRAWN	Christian.cou
.X	+/-	0.50	CHECKED	01/03/08
.XX	+/-	0.30	CHECKED	01/03/08
.XXX	+/-	0.20		
FRACTIONS	+/-			
ANGLES	+/-	5'		
FOR MATERIALS AND FINISHES SEE NOTES		DRAWING FILE :		
REMOVE SHARP EDGES		ANGLE OF PROJECTION		
DIMENSIONS				
U.S.	INCHES			
METRIC	MM			

Amphenol

TITLE  
machined contacts connector, D series

SIZE	DRAWING NO.	REV.
A4	C L77DXFXXS	A
SCALE	NONE	SHEET 1 OF 1

# Mouser Electronics

Authorized Distributor

Click to View Pricing, Inventory, Delivery & Lifecycle Information:

[Amphenol:](#)

[L77DAF15S](#) [L77DEF09S](#) [L77DCF37S](#) [L77DBF25S](#)