

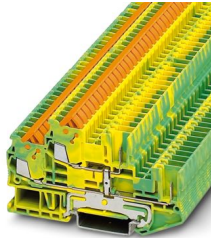
QTTCB 1,5/ 2P-PE - Protective conductor double-level terminal block



3050219

<https://www.phoenixcontact.com/us/products/3050219>

Please be informed that the data shown in this PDF document is generated from our online catalog. Please find the complete data in the user documentation. Our general terms of use for downloads are valid.



Protective conductor double-level terminal block, connection method: Fast/plug-in connection, Rated cross section: 1.5 mm², cross section: 0.25 mm² - 1.5 mm², mounting type: NS 35/7,5, NS 35/15, color: green-yellow

Your advantages

- Ground terminal blocks of the same shape are available
- Tested for railway applications

Commercial data

Item number	3050219
Packing unit	50 pc
Minimum order quantity	50 pc
Sales key	BE03
Product key	BE3142
Catalog page	Page 287 (C-1-2019)
GTIN	4017918975869
Weight per piece (including packing)	17.92 g
Weight per piece (excluding packing)	17.92 g
Customs tariff number	85369010
Country of origin	PL

QTTCB 1,5/ 2P-PE - Protective conductor double-level terminal block



3050219

<https://www.phoenixcontact.com/us/products/3050219>

Technical data

Notes

General

Note	In plugged-in condition, the most unfavorable paths of the entire plug-in connection are decisive. When reconnecting the conductor, you must make sure that the section of the conductor already used for contacting is cut off again.
------	---

Product properties

Product type	Ground terminal block
Area of application	Railway industry
	Machine building
	Plant engineering
Number of connections	4
Number of rows	2

Insulation characteristics

Overvoltage category	III
Degree of pollution	3

Electrical properties

Rated surge voltage	6 kV
Maximum power dissipation for nominal condition	0.56 W

Connection data

Grounding foot	Yes
Number of connections per level	2
Nominal cross section	1.5 mm ²
Note	Please observe the current carrying capacity of the DIN rails.
Material wire insulation	PVC / PE
Internal cylindrical gage	A3
Connection in acc. with standard	IEC 61984
Conductor cross section rigid	0.25 mm ² ... 1.5 mm ²
Cross section AWG	24 ... 16 (converted acc. to IEC)
Conductor cross section flexible	0.25 mm ² ... 1.5 mm ²
Conductor cross section, flexible [AWG]	24 ... 16 (converted acc. to IEC)
Flexible conductor cross section (ferrule with plastic sleeve)	0.25 mm ² ... 1.5 mm ²
Cross section, sensor conductors	0.25 mm ² ... 0.34 mm ²
Nominal cross section	1.5 mm ²

Dimensions

QTTCB 1,5/ 2P-PE - Protective conductor double-level terminal block



3050219

<https://www.phoenixcontact.com/us/products/3050219>

Width	5.2 mm
End cover width	2.2 mm
Height	87.8 mm
Depth on NS 35/7,5	49.9 mm
Depth on NS 35/15	57.4 mm

Material specifications

Color	green-yellow
Flammability rating according to UL 94	V0
Insulating material group	I
Insulating material	PA
Static insulating material application in cold	-60 °C
Temperature index of insulation material (DIN EN 60216-1 (VDE 0304-21))	130 °C
Relative insulation material temperature index (Elec., UL 746 B)	125 °C
Fire protection for rail vehicles (DIN EN 45545-2) R22	HL 1 - HL 3
Fire protection for rail vehicles (DIN EN 45545-2) R23	HL 1 - HL 3
Fire protection for rail vehicles (DIN EN 45545-2) R24	HL 1 - HL 3
Fire protection for rail vehicles (DIN EN 45545-2) R26	HL 1 - HL 3
Calorimetric heat release NFPA 130 (ASTM E 1354)	28 MJ/kg
Surface flammability NFPA 130 (ASTM E 162)	passed
Specific optical density of smoke NFPA 130 (ASTM E 662)	passed
Smoke gas toxicity NFPA 130 (SMP 800C)	passed

Mechanical properties

Mechanical data

Open side panel	Yes
-----------------	-----

Environmental and real-life conditions

Oscillation/broadband noise

Specification	DIN EN 50155 (VDE 0115-200):2018-05
Spectrum	Service life test category 1, class B, body mounted
Frequency	$f_1 = 5 \text{ Hz}$ to $f_2 = 150 \text{ Hz}$
ASD level	$0.964 \text{ (m/s}^2\text{)}^2\text{/Hz}$
Acceleration	0.58g
Test duration per axis	5 h
Test directions	X-, Y- and Z-axis
Result	Test passed

Shocks

Pulse shape	Half-sine
Acceleration	5g
Shock duration	30 ms

QTTCB 1,5/ 2P-PE - Protective conductor double-level terminal block



3050219

<https://www.phoenixcontact.com/us/products/3050219>

Number of shocks per direction	3
Test directions	X-, Y- and Z-axis (pos. and neg.)
Result	Test passed

Ambient conditions

Ambient temperature (operation)	-60 °C (max. operating temperature see derating curve)
Temperature when conductor connected	-40 °C ... 100 °C
Ambient temperature (storage/transport)	-25 °C ... 60 °C (for a short time, no longer than 24 h, -60°C to +70°C)
Ambient temperature (assembly)	-5 °C ... 70 °C
Ambient temperature (actuation)	-5 °C ... 70 °C
Permissible humidity (operation)	20 % ... 90 %
Permissible humidity (storage/transport)	30 % ... 70 %

Standards and regulations

Connection in acc. with standard	IEC 61984
----------------------------------	-----------

Mounting

Mounting type	NS 35/7,5
	NS 35/15

QTTCB 1,5/ 2P-PE - Protective conductor double-level terminal block

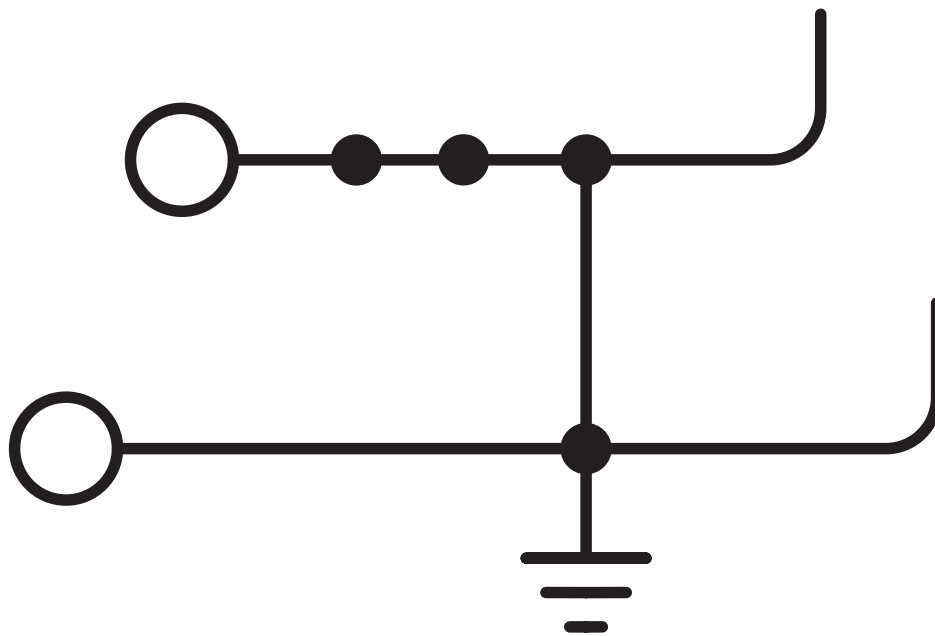


3050219

<https://www.phoenixcontact.com/us/products/3050219>

Drawings

Circuit diagram



QTTCB 1,5/ 2P-PE - Protective conductor double-level terminal block



3050219

<https://www.phoenixcontact.com/us/products/3050219>

Approvals

🔗 To download certificates, visit the product detail page: <https://www.phoenixcontact.com/us/products/3050219>



CSA

Approval ID: 2030668

QTTCB 1,5/ 2P-PE - Protective conductor double-level terminal block



3050219

<https://www.phoenixcontact.com/us/products/3050219>

Classifications

ECLASS

ECLASS-11.0	27141141
ECLASS-13.0	27250104

ETIM

ETIM 9.0	EC000901
----------	----------

UNSPSC

UNSPSC 21.0	39121400
-------------	----------

QTTCB 1,5/ 2P-PE - Protective conductor double-level terminal block



3050219

<https://www.phoenixcontact.com/us/products/3050219>

Environmental product compliance

EU RoHS

Fulfills EU RoHS substance requirements	Yes, No exemptions
---	--------------------

China RoHS

Environment friendly use period (EFUP)	EFUP-E
	No hazardous substances above the limits

EU REACH SVHC


REACH candidate substance (CAS No.)	No substance above 0.1 wt%
-------------------------------------	----------------------------

QTTCB 1,5/ 2P-PE - Protective conductor double-level terminal block

3050219

<https://www.phoenixcontact.com/us/products/3050219>

Accessories

 Note: Applying some accessories below might limit this product.

FBS 2-5 - Plug-in bridge

3030161

<https://www.phoenixcontact.com/us/products/3030161>



Plug-in bridge, pitch: 5.2 mm, number of positions: 2, length: 23 mm, color: red

FBS 3-5 - Plug-in bridge

3030174

<https://www.phoenixcontact.com/us/products/3030174>



Plug-in bridge, pitch: 5.2 mm, number of positions: 3, length: 23 mm, color: red

QTTCB 1,5/ 2P-PE - Protective conductor double-level terminal block



3050219

<https://www.phoenixcontact.com/us/products/3050219>

FBS 4-5 - Plug-in bridge

3030187

<https://www.phoenixcontact.com/us/products/3030187>

Plug-in bridge, pitch: 5.2 mm, number of positions: 4, length: 23 mm, color: red



FBS 5-5 - Plug-in bridge

3030190

<https://www.phoenixcontact.com/us/products/3030190>

Plug-in bridge, pitch: 5.2 mm, number of positions: 5, length: 23 mm, color: red



QTTCB 1,5/ 2P-PE - Protective conductor double-level terminal block



3050219

<https://www.phoenixcontact.com/us/products/3050219>

FBS 10-5 - Plug-in bridge

3030213

<https://www.phoenixcontact.com/us/products/3030213>

Plug-in bridge, pitch: 5.2 mm, number of positions: 10, length: 23 mm, color: red



FBS 20-5 - Plug-in bridge

3030226

<https://www.phoenixcontact.com/us/products/3030226>

Plug-in bridge, pitch: 5.2 mm, number of positions: 20, color: red



QTTCB 1,5/ 2P-PE - Protective conductor double-level terminal block



3050219

<https://www.phoenixcontact.com/us/products/3050219>


FBS 50-5 - Plug-in bridge

3038930

<https://www.phoenixcontact.com/us/products/3038930>



Plug-in bridge, pitch: 5.2 mm, number of positions: 50, color: red

 Max. current carrying capacity: 24 A

FBSR 2-5 - Plug-in bridge

3033702

<https://www.phoenixcontact.com/us/products/3033702>



Plug-in bridge, pitch: 5.2 mm, number of positions: 2, color: red

QTTCB 1,5/ 2P-PE - Protective conductor double-level terminal block

3050219

<https://www.phoenixcontact.com/us/products/3050219>

FBSR 3-5 - Plug-in bridge

3001591

<https://www.phoenixcontact.com/us/products/3001591>



Plug-in bridge, pitch: 5.2 mm, number of positions: 3, color: red

FBSR 4-5 - Plug-in bridge

3001592

<https://www.phoenixcontact.com/us/products/3001592>



Plug-in bridge, pitch: 5.2 mm, number of positions: 4, color: red

QTTCB 1,5/ 2P-PE - Protective conductor double-level terminal block

3050219

<https://www.phoenixcontact.com/us/products/3050219>

FBSR 5-5 - Plug-in bridge

3001593

<https://www.phoenixcontact.com/us/products/3001593>

Plug-in bridge, pitch: 5.2 mm, number of positions: 5, color: red



FBSR 10-5 - Plug-in bridge

3033710

<https://www.phoenixcontact.com/us/products/3033710>

Plug-in bridge, pitch: 5.2 mm, number of positions: 10, color: red



QTTCB 1,5/ 2P-PE - Protective conductor double-level terminal block

3050219

<https://www.phoenixcontact.com/us/products/3050219>

FBS 2-5 BU - Plug-in bridge

3036877

<https://www.phoenixcontact.com/us/products/3036877>



Plug-in bridge, pitch: 5.2 mm, number of positions: 2, color: blue

FBS 3-5 BU - Plug-in bridge

3036880

<https://www.phoenixcontact.com/us/products/3036880>



Plug-in bridge, pitch: 5.2 mm, number of positions: 3, color: blue

QTTCB 1,5/ 2P-PE - Protective conductor double-level terminal block

3050219

<https://www.phoenixcontact.com/us/products/3050219>

FBS 4-5 BU - Plug-in bridge

3036893

<https://www.phoenixcontact.com/us/products/3036893>

Plug-in bridge, pitch: 5.2 mm, number of positions: 4, color: blue



FBS 5-5 BU - Plug-in bridge

3036903

<https://www.phoenixcontact.com/us/products/3036903>

Plug-in bridge, pitch: 5.2 mm, number of positions: 5, color: blue



QTTCB 1,5/ 2P-PE - Protective conductor double-level terminal block

3050219

<https://www.phoenixcontact.com/us/products/3050219>

FBS 10-5 BU - Plug-in bridge

3036916

<https://www.phoenixcontact.com/us/products/3036916>

Plug-in bridge, pitch: 5.2 mm, number of positions: 10, color: blue



FBS 20-5 BU - Plug-in bridge

3036929

<https://www.phoenixcontact.com/us/products/3036929>

Plug-in bridge, pitch: 5.2 mm, number of positions: 20, color: blue



QTTCB 1,5/ 2P-PE - Protective conductor double-level terminal block



3050219

<https://www.phoenixcontact.com/us/products/3050219>

FBS 50-5 BU - Plug-in bridge

3032114

<https://www.phoenixcontact.com/us/products/3032114>

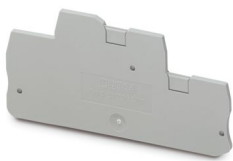


Plug-in bridge, pitch: 5.2 mm, number of positions: 50, color: blue

D-QTTCB 1,5/2P - End cover

3206306

<https://www.phoenixcontact.com/us/products/3206306>



End cover, depth: 49.9 mm, width: 2.2 mm, height: 87.8 mm, color: gray

QTTCB 1,5/ 2P-PE - Protective conductor double-level terminal block



3050219

<https://www.phoenixcontact.com/us/products/3050219>

PS-4/E - Test plug

3036709

<https://www.phoenixcontact.com/us/products/3036709>



Test plug, Individual test plug, number of positions: 1, color: red

ATP-QTTCB - Partition plate

3206238

<https://www.phoenixcontact.com/us/products/3206238>



Partition plate, depth: 54 mm, width: 2 mm, height: 102 mm, color: gray

QTTCB 1,5/ 2P-PE - Protective conductor double-level terminal block



3050219

<https://www.phoenixcontact.com/us/products/3050219>

PC - Coding star

3040588

<https://www.phoenixcontact.com/us/products/3040588>



Coding star, 4-section, depth: 6 mm, width: 3 mm, height: 3 mm, color: red

LPO 2,5/E - Pick-off plug

3270516

<https://www.phoenixcontact.com/us/products/3270516>



Pick-off plug, nom. voltage: 800 V, nominal current: 24 A, number of positions: 1, connection method: Push-in connection, Rated cross section: 2.5 mm², cross section: 0.14 mm²- 4 mm², color: gray

QTTCB 1,5/ 2P-PE - Protective conductor double-level terminal block



3050219

<https://www.phoenixcontact.com/us/products/3050219>

LPO 2,5 - Pick-off plug

3270517

<https://www.phoenixcontact.com/us/products/3270517>



Pick-off plug, nom. voltage: 800 V, nominal current: 24 A, number of positions: 1, connection method: Push-in connection, Rated cross section: 2.5 mm², cross section: 0.14 mm²- 4 mm², color: gray

LPS-5/E - Service connector

3270520

<https://www.phoenixcontact.com/us/products/3270520>



Service connector, nom. voltage: 800 V, nominal current: 24 A, number of positions: 1, connection method: Push-in connection, Rated cross section: 2.5 mm², cross section: 0.14 mm²- 4 mm², color: red

QTTCB 1,5/ 2P-PE - Protective conductor double-level terminal block



3050219

<https://www.phoenixcontact.com/us/products/3050219>

LPS-5 - Service connector

3270521

<https://www.phoenixcontact.com/us/products/3270521>



Service connector, nom. voltage: 800 V, nominal current: 24 A, number of positions: 1, connection method: Push-in connection, Rated cross section: 2.5 mm², cross section: 0.14 mm²- 4 mm², color: red

NS 35/ 7,5 PERF 2000MM - DIN rail perforated

0801733

<https://www.phoenixcontact.com/us/products/0801733>



DIN rail perforated, Pack of 25 (50 m), acc. to EN 60715, material: Steel, galvanized, passivated with a thick layer, Standard profile, color: silver

QTTCB 1,5/ 2P-PE - Protective conductor double-level terminal block



3050219

<https://www.phoenixcontact.com/us/products/3050219>

NS 35/ 7,5 UNPERF 2000MM - DIN rail, unperforated

0801681

<https://www.phoenixcontact.com/us/products/0801681>



DIN rail, unperforated, Pack of 25 (50 m), acc. to EN 60715, material: Steel, galvanized, passivated with a thick layer, Standard profile, color: silver

NS 35/ 7,5 WH PERF 2000MM - DIN rail perforated

1204119

<https://www.phoenixcontact.com/us/products/1204119>



DIN rail perforated, Pack of 25 (50 m), acc. to EN 60715, material: Steel, Galvanized, white passivated, Standard profile, color: silver

QTTCB 1,5/ 2P-PE - Protective conductor double-level terminal block



3050219

<https://www.phoenixcontact.com/us/products/3050219>

NS 35/ 7,5 WH UNPERF 2000MM-VPE 10 - DIN rail, unperforated

1204122

<https://www.phoenixcontact.com/us/products/1204122>



DIN rail, unperforated, Pack of 10 (20 m), acc. to EN 60715, material: Steel, Galvanized, white passivated, Standard profile, color: silver

NS 35/ 7,5 AL UNPERF 2000MM - DIN rail, unperforated

0801704

<https://www.phoenixcontact.com/us/products/0801704>



DIN rail, unperforated, Pack of 25 (50 m), acc. to EN 60715, material: Aluminum, uncoated, Standard profile, color: silver

QTTCB 1,5/ 2P-PE - Protective conductor double-level terminal block



3050219

<https://www.phoenixcontact.com/us/products/3050219>

NS 35/ 7,5 ZN PERF 2000MM - DIN rail perforated

1206421

<https://www.phoenixcontact.com/us/products/1206421>



DIN rail perforated, Pack of 25 (50 m), acc. to EN 60715, material: Steel, galvanized, Standard profile, color: silver

NS 35/ 7,5 ZN UNPERF 2000MM - DIN rail, unperforated

1206434

<https://www.phoenixcontact.com/us/products/1206434>



DIN rail, unperforated, Pack of 25 (50 m), acc. to EN 60715, material: Steel, galvanized, Standard profile, color: silver

QTTCB 1,5/ 2P-PE - Protective conductor double-level terminal block



3050219

<https://www.phoenixcontact.com/us/products/3050219>

NS 35/ 7,5 CU UNPERF 2000MM-VPE 10 - DIN rail, unperforated

0801762

<https://www.phoenixcontact.com/us/products/0801762>



DIN rail, unperforated, Pack of 10 (20 m), acc. to EN 60715, material: Copper, uncoated, Standard profile, color: copper-colored

NS 35/ 7,5 CAP - End cap

1206560

<https://www.phoenixcontact.com/us/products/1206560>

DIN rail end piece, for DIN rail NS 35/7.5



QTTCB 1,5/ 2P-PE - Protective conductor double-level terminal block



3050219

<https://www.phoenixcontact.com/us/products/3050219>

ZBF 5:UNBEDRUCKT - Zack Marker strip, flat

0808642

<https://www.phoenixcontact.com/us/products/0808642>



Zack Marker strip, flat, Strip, white, unlabeled, can be labeled with: PLOTMARK, CMS-P1-PLOTTER, mounting type: snapped, for terminal block width: 5 mm, lettering field size: 5.1 x 5.2 mm, Number of individual labels: 10

ZBF 5 CUS - Zack Marker strip, flat

0825025

<https://www.phoenixcontact.com/us/products/0825025>



Zack Marker strip, flat, can be ordered: Strip, white, labeled according to customer specifications, mounting type: snap into flat marker groove, for terminal block width: 5 mm, lettering field size: 5.15 x 5.15 mm, Number of individual labels: 10

QTTCB 1,5/ 2P-PE - Protective conductor double-level terminal block



3050219

<https://www.phoenixcontact.com/us/products/3050219>

ZBF 5,LGS:FORTL.ZAHLEN - Zack Marker strip, flat

0808671

<https://www.phoenixcontact.com/us/products/0808671>



Zack Marker strip, flat, Strip, white, labeled, printed horizontally: consecutive numbers 1 ... 10, 11 ... 20, etc. up to 491 ... 500, mounting type: snapped, for terminal block width: 5 mm, lettering field size: 5.15 x 5.15 mm, Number of individual labels: 10

ZBF 5,QR:FORTL.ZAHLEN - Zack Marker strip, flat

0808697

<https://www.phoenixcontact.com/us/products/0808697>



Zack Marker strip, flat, Strip, white, labeled, Printed vertically: consecutive numbers 1 ... 10, 11 ... 20, etc. up to 91 ... 100, mounting type: snapped, for terminal block width: 5 mm, lettering field size: 5.15 x 5.15 mm, Number of individual labels: 10

QTTCB 1,5/ 2P-PE - Protective conductor double-level terminal block



3050219

<https://www.phoenixcontact.com/us/products/3050219>

ZBF 5,LGS:GERADE ZAHLEN - Zack Marker strip, flat

0810821

<https://www.phoenixcontact.com/us/products/0810821>



Zack Marker strip, flat, Strip, white, labeled, printed horizontally: consecutive even numbers 2 ... 20, 22 ... 40, etc. up to 82 ... 100, mounting type: snapped, for terminal block width: 5 mm, lettering field size: 5.15 x 5.15 mm, Number of individual labels: 10

ZBF 5,LGS:UNGERADE ZAHLEN - Zack Marker strip, flat

0810863

<https://www.phoenixcontact.com/us/products/0810863>



Zack Marker strip, flat, Strip, white, labeled, printed horizontally: Odd numbers 1 - 19, 21 - 39, etc. up to 81 - 99, mounting type: snapped, for terminal block width: 5 mm, lettering field size: 5.15 x 5.15 mm, Number of individual labels: 10

QTTCB 1,5/ 2P-PE - Protective conductor double-level terminal block



3050219

<https://www.phoenixcontact.com/us/products/3050219>

UC-TMF 5 - Marker for terminal blocks

0818153

<https://www.phoenixcontact.com/us/products/0818153>



Marker for terminal blocks, Sheet, white, unlabeled, can be labeled with: BLUEMARK ID COLOR, BLUEMARK ID, BLUEMARK CLED, PLOTMARK, CMS-P1-PLOTTER, mounting type: snapped, for terminal block width: 5.2 mm, lettering field size: 4.6 x 5.1 mm, Number of individual labels: 96

UC-TMF 5 CUS - Marker for terminal blocks

0824638

<https://www.phoenixcontact.com/us/products/0824638>



Marker for terminal blocks, can be ordered: by sheet, white, labeled according to customer specifications, mounting type: snap into flat marker groove, for terminal block width: 5.2 mm, lettering field size: 4.6 x 5.1 mm, Number of individual labels: 96

QTTCB 1,5/ 2P-PE - Protective conductor double-level terminal block



3050219

<https://www.phoenixcontact.com/us/products/3050219>

UCT-TMF 5 - Marker for terminal blocks

0828744

<https://www.phoenixcontact.com/us/products/0828744>



Marker for terminal blocks, Sheet, white, unlabeled, can be labeled with: TOPMARK NEO, TOPMARK LASER, BLUEMARK ID COLOR, BLUEMARK ID, BLUEMARK CLED, THERMOMARK PRIME, THERMOMARK CARD 2.0, THERMOMARK CARD, mounting type: snapped, for terminal block width: 5.2 mm, lettering field size: 4.4 x 4.7 mm, Number of individual labels: 72

UCT-TMF 5 CUS - Marker for terminal blocks

0829658

<https://www.phoenixcontact.com/us/products/0829658>



Marker for terminal blocks, can be ordered: by sheet, white, labeled according to customer specifications, mounting type: snap into flat marker groove, for terminal block width: 5.2 mm, lettering field size: 4.4 x 4.7 mm, Number of individual labels: 72

QTTCB 1,5/ 2P-PE - Protective conductor double-level terminal block



3050219

<https://www.phoenixcontact.com/us/products/3050219>

PAI-4-FIX-5/6 BU - Test adapter

3035975

<https://www.phoenixcontact.com/us/products/3035975>



4 mm test adapter, for terminal blocks with 5.2 mm and 6.2 mm pitch

PAI-4-FIX-5/6 OG - Test adapter

3035974

<https://www.phoenixcontact.com/us/products/3035974>



4 mm test adapter, for terminal blocks with 5.2 mm and 6.2 mm pitch

QTTCB 1,5/ 2P-PE - Protective conductor double-level terminal block



3050219

<https://www.phoenixcontact.com/us/products/3050219>

PAI-4-FIX-5/6 YE - Test adapter

3035977

<https://www.phoenixcontact.com/us/products/3035977>



4 mm test adapter, for terminal blocks with 5.2 mm and 6.2 mm pitch

PAI-4-FIX-5/6 RD - Test adapter

3035976

<https://www.phoenixcontact.com/us/products/3035976>



4 mm test adapter, for terminal blocks with 5.2 mm and 6.2 mm pitch

QTTCB 1,5/ 2P-PE - Protective conductor double-level terminal block



3050219

<https://www.phoenixcontact.com/us/products/3050219>

PAI-4-FIX-5/6 GN - Test adapter

3035978

<https://www.phoenixcontact.com/us/products/3035978>



4 mm test adapter, for terminal blocks with 5.2 mm and 6.2 mm pitch

PAI-4-FIX-5/6 BK - Test adapter

3035980

<https://www.phoenixcontact.com/us/products/3035980>



4 mm test adapter, for terminal blocks with 5.2 mm and 6.2 mm pitch

QTTCB 1,5/ 2P-PE - Protective conductor double-level terminal block



3050219

<https://www.phoenixcontact.com/us/products/3050219>

PAI-4-FIX-5/6 GY - Test adapter

3035982

<https://www.phoenixcontact.com/us/products/3035982>



4 mm test adapter, for terminal blocks with 5.2 mm and 6.2 mm pitch

PAI-4-FIX-5/6 VT - Test adapter

3035979

<https://www.phoenixcontact.com/us/products/3035979>



4 mm test adapter, for terminal blocks with 5.2 mm and 6.2 mm pitch

QTTCB 1,5/ 2P-PE - Protective conductor double-level terminal block



3050219

<https://www.phoenixcontact.com/us/products/3050219>

PAI-4-FIX-5/6 BN - Test adapter

3035981

<https://www.phoenixcontact.com/us/products/3035981>



4 mm test adapter, for terminal blocks with 5.2 mm and 6.2 mm pitch

PAI-4-FIX-5/6 WH - Test adapter

3035983

<https://www.phoenixcontact.com/us/products/3035983>



4 mm test adapter, for terminal blocks with 5.2 mm and 6.2 mm pitch

QTTCB 1,5/ 2P-PE - Protective conductor double-level terminal block



3050219

<https://www.phoenixcontact.com/us/products/3050219>

PS-5 - Test plug

3030983

<https://www.phoenixcontact.com/us/products/3030983>

Test plug, Modular test plug, number of positions: 1, color: red



DP PS-5 - Spacer plate

3036725

<https://www.phoenixcontact.com/us/products/3036725>

Spacer plate, depth: 29 mm, width: 5.2 mm, height: 22.4 mm, number of positions: 1, color: red



QTTCB 1,5/ 2P-PE - Protective conductor double-level terminal block



3050219

<https://www.phoenixcontact.com/us/products/3050219>

PS-5/2,3MM RD - Test plug

3038723

<https://www.phoenixcontact.com/us/products/3038723>

Test plug, number of positions: 1, color: red



E/AL-NS 35 - End bracket

1201662

<https://www.phoenixcontact.com/us/products/1201662>

End clamp, for end support of UKH 50 to UKH 240, is pushed onto DIN rail NS 35 and fixed with 2 screws, width: 10 mm, color: aluminum



QTTCB 1,5/ 2P-PE - Protective conductor double-level terminal block

3050219

<https://www.phoenixcontact.com/us/products/3050219>

SP 2,5/ 1 - Plug

3040258

<https://www.phoenixcontact.com/us/products/3040258>



Plug, nom. voltage: 500 V, nominal current: 24 A, number of positions: 1, connection method: Spring-cage connection, Rated cross section: 2.5 mm², cross section: 0.08 mm²- 4 mm², color: gray

SP 2,5/ 2 - Plug

3040261

<https://www.phoenixcontact.com/us/products/3040261>



Plug, nom. voltage: 500 V, nominal current: 24 A, number of positions: 2, connection method: Spring-cage connection, Rated cross section: 2.5 mm², cross section: 0.08 mm²- 4 mm², color: gray

QTTCB 1,5/ 2P-PE - Protective conductor double-level terminal block



3050219

<https://www.phoenixcontact.com/us/products/3050219>

SP 2,5/ 3 - Plug

3040274

<https://www.phoenixcontact.com/us/products/3040274>



Plug, nom. voltage: 500 V, nominal current: 24 A, number of positions: 3, connection method: Spring-cage connection, Rated cross section: 2.5 mm², cross section: 0.08 mm²- 4 mm², color: gray

SP 2,5/ 4 - Plug

3040287

<https://www.phoenixcontact.com/us/products/3040287>



Plug, nom. voltage: 500 V, nominal current: 24 A, number of positions: 4, connection method: Spring-cage connection, Rated cross section: 2.5 mm², cross section: 0.08 mm²- 4 mm², color: gray

QTTCB 1,5/ 2P-PE - Protective conductor double-level terminal block



3050219

<https://www.phoenixcontact.com/us/products/3050219>

SP 2,5/ 5 - Plug

3040290

<https://www.phoenixcontact.com/us/products/3040290>



Plug, nom. voltage: 500 V, nominal current: 24 A, number of positions: 5, connection method: Spring-cage connection, Rated cross section: 2.5 mm², cross section: 0.08 mm²- 4 mm², color: gray

SP 2,5/ 6 - Plug

3040300

<https://www.phoenixcontact.com/us/products/3040300>



Plug, nom. voltage: 500 V, nominal current: 24 A, number of positions: 6, connection method: Spring-cage connection, Rated cross section: 2.5 mm², cross section: 0.08 mm²- 4 mm², color: gray

QTTCB 1,5/ 2P-PE - Protective conductor double-level terminal block



3050219

<https://www.phoenixcontact.com/us/products/3050219>

SP 2,5/ 7 - Plug

3040313

<https://www.phoenixcontact.com/us/products/3040313>



Plug, nom. voltage: 500 V, nominal current: 24 A, number of positions: 7, connection method: Spring-cage connection, Rated cross section: 2.5 mm², cross section: 0.08 mm²- 4 mm², color: gray

SP 2,5/ 8 - Plug

3040326

<https://www.phoenixcontact.com/us/products/3040326>



Plug, nom. voltage: 500 V, nominal current: 24 A, number of positions: 8, connection method: Spring-cage connection, Rated cross section: 2.5 mm², cross section: 0.08 mm²- 4 mm², color: gray

QTTCB 1,5/ 2P-PE - Protective conductor double-level terminal block



3050219

<https://www.phoenixcontact.com/us/products/3050219>

SP 2,5/ 9 - Plug

3040339

<https://www.phoenixcontact.com/us/products/3040339>



Plug, nom. voltage: 500 V, nominal current: 24 A, number of positions: 9, connection method: Spring-cage connection, Rated cross section: 2.5 mm², cross section: 0.08 mm²- 4 mm², color: gray

SP 2,5/10 - Plug

3040342

<https://www.phoenixcontact.com/us/products/3040342>



Plug, nom. voltage: 500 V, nominal current: 24 A, number of positions: 10, connection method: Spring-cage connection, Rated cross section: 2.5 mm², cross section: 0.08 mm²- 4 mm², color: gray

QTTCB 1,5/ 2P-PE - Protective conductor double-level terminal block



3050219

<https://www.phoenixcontact.com/us/products/3050219>

SP 2,5/11 - Plug

3040355

<https://www.phoenixcontact.com/us/products/3040355>



Plug, nom. voltage: 500 V, nominal current: 24 A, number of positions: 11, connection method: Spring-cage connection, Rated cross section: 2.5 mm², cross section: 0.08 mm²- 4 mm², color: gray

SP 2,5/12 - Plug

3040368

<https://www.phoenixcontact.com/us/products/3040368>



Plug, nom. voltage: 500 V, nominal current: 24 A, number of positions: 12, connection method: Spring-cage connection, Rated cross section: 2.5 mm², cross section: 0.08 mm²- 4 mm², color: gray

QTTCB 1,5/ 2P-PE - Protective conductor double-level terminal block



3050219

<https://www.phoenixcontact.com/us/products/3050219>

SP 2,5/13 - Plug

3040371

<https://www.phoenixcontact.com/us/products/3040371>



Plug, nom. voltage: 500 V, nominal current: 24 A, number of positions: 13, connection method: Spring-cage connection, Rated cross section: 2.5 mm², cross section: 0.08 mm²- 4 mm², color: gray

SP 2,5/14 - Plug

3040384

<https://www.phoenixcontact.com/us/products/3040384>



Plug, nom. voltage: 500 V, nominal current: 24 A, number of positions: 14, connection method: Spring-cage connection, Rated cross section: 2.5 mm², cross section: 0.08 mm²- 4 mm², color: gray

QTTCB 1,5/ 2P-PE - Protective conductor double-level terminal block



3050219

<https://www.phoenixcontact.com/us/products/3050219>

SP 2,5/15 - Plug

3040397

<https://www.phoenixcontact.com/us/products/3040397>



Plug, nom. voltage: 500 V, nominal current: 24 A, number of positions: 15, connection method: Spring-cage connection, Rated cross section: 2.5 mm², cross section: 0.08 mm²- 4 mm², color: gray

SP 2,5/ 1 BU - Plug

3040698

<https://www.phoenixcontact.com/us/products/3040698>



Plug, nom. voltage: 500 V, nominal current: 24 A, number of positions: 1, connection method: Spring-cage connection, Rated cross section: 2.5 mm², cross section: 0.08 mm²- 4 mm², color: blue

QTTCB 1,5/ 2P-PE - Protective conductor double-level terminal block



3050219

<https://www.phoenixcontact.com/us/products/3050219>

SP 2,5/ 1 GNYE - Plug

3040708

<https://www.phoenixcontact.com/us/products/3040708>



Plug, nom. voltage: 500 V, nominal current: 24 A, number of positions: 1, connection method: Spring-cage connection, Rated cross section: 2.5 mm², cross section: 0.08 mm²- 4 mm², color: green-yellow

SPB 2,5/ 1 - Plug

3040106

<https://www.phoenixcontact.com/us/products/3040106>



Plug, nom. voltage: 500 V, nominal current: 24 A, number of positions: 1, connection method: Spring-cage connection, Rated cross section: 2.5 mm², cross section: 0.08 mm²- 4 mm², color: gray

QTTCB 1,5/ 2P-PE - Protective conductor double-level terminal block



3050219

<https://www.phoenixcontact.com/us/products/3050219>

SPB 2,5/ 9 - Plug

3040180

<https://www.phoenixcontact.com/us/products/3040180>



Plug, nom. voltage: 500 V, nominal current: 24 A, number of positions: 9, connection method: Spring-cage connection, Rated cross section: 2.5 mm², cross section: 0.08 mm²- 4 mm², color: gray

SPB 2,5/11 - Plug

3040203

<https://www.phoenixcontact.com/us/products/3040203>



Plug, nom. voltage: 500 V, nominal current: 24 A, number of positions: 11, connection method: Spring-cage connection, Rated cross section: 2.5 mm², cross section: 0.08 mm²- 4 mm², color: gray

QTTCB 1,5/ 2P-PE - Protective conductor double-level terminal block



3050219

<https://www.phoenixcontact.com/us/products/3050219>

SPB 2,5/13 - Plug

3040229

<https://www.phoenixcontact.com/us/products/3040229>



Plug, nom. voltage: 500 V, nominal current: 24 A, number of positions: 13, connection method: Spring-cage connection, Rated cross section: 2.5 mm², cross section: 0.08 mm²- 4 mm², color: gray

SPB 2,5/14 - Plug

3040232

<https://www.phoenixcontact.com/us/products/3040232>



Plug, nom. voltage: 500 V, nominal current: 24 A, number of positions: 14, connection method: Spring-cage connection, Rated cross section: 2.5 mm², cross section: 0.08 mm²- 4 mm², color: gray

QTTCB 1,5/ 2P-PE - Protective conductor double-level terminal block



3050219

<https://www.phoenixcontact.com/us/products/3050219>

SPB 2,5/ 1 BU - Plug

3040724

<https://www.phoenixcontact.com/us/products/3040724>



Plug, nom. voltage: 500 V, nominal current: 24 A, number of positions: 1, connection method: Spring-cage connection, Rated cross section: 2.5 mm², cross section: 0.08 mm²- 4 mm², color: blue

SPB 2,5/ 1 GNYE - Plug

3040711

<https://www.phoenixcontact.com/us/products/3040711>



Plug, nom. voltage: 500 V, nominal current: 24 A, number of positions: 1, connection method: Spring-cage connection, Rated cross section: 2.5 mm², cross section: 0.08 mm²- 4 mm², color: green-yellow

QTTCB 1,5/ 2P-PE - Protective conductor double-level terminal block



3050219

<https://www.phoenixcontact.com/us/products/3050219>

SPDB 2,5/ 1 - Plug

3040407

<https://www.phoenixcontact.com/us/products/3040407>



Plug, nom. voltage: 500 V, nominal current: 24 A, number of positions: 1, connection method: Spring-cage connection, Rated cross section: 2.5 mm², cross section: 0.08 mm²- 4 mm², color: gray

SPDB 2,5/ 9 - Plug

3040481

<https://www.phoenixcontact.com/us/products/3040481>



Plug, nom. voltage: 500 V, nominal current: 24 A, number of positions: 9, connection method: Spring-cage connection, Rated cross section: 2.5 mm², cross section: 0.08 mm²- 4 mm², color: gray

QTTCB 1,5/ 2P-PE - Protective conductor double-level terminal block



3050219

<https://www.phoenixcontact.com/us/products/3050219>

SPDB 2,5/12 - Plug

3040517

<https://www.phoenixcontact.com/us/products/3040517>



Plug, nom. voltage: 500 V, nominal current: 24 A, number of positions: 12, connection method: Spring-cage connection, Rated cross section: 2.5 mm², cross section: 0.08 mm²- 4 mm², color: gray

SPDB 2,5/13 - Plug

3040520

<https://www.phoenixcontact.com/us/products/3040520>



Plug, nom. voltage: 500 V, nominal current: 24 A, number of positions: 13, connection method: Spring-cage connection, Rated cross section: 2.5 mm², cross section: 0.08 mm²- 4 mm², color: gray

QTTCB 1,5/ 2P-PE - Protective conductor double-level terminal block



3050219

<https://www.phoenixcontact.com/us/products/3050219>

SPDB 2,5/14 - Plug

3040533

<https://www.phoenixcontact.com/us/products/3040533>



Plug, nom. voltage: 500 V, nominal current: 24 A, number of positions: 14, connection method: Spring-cage connection, Rated cross section: 2.5 mm², cross section: 0.08 mm²- 4 mm², color: gray

SPDB 2,5/ 1 BU - Plug

3040737

<https://www.phoenixcontact.com/us/products/3040737>



Plug, nom. voltage: 500 V, nominal current: 24 A, number of positions: 1, connection method: Spring-cage connection, Rated cross section: 2.5 mm², cross section: 0.08 mm²- 4 mm², color: blue

QTTCB 1,5/ 2P-PE - Protective conductor double-level terminal block



3050219

<https://www.phoenixcontact.com/us/products/3050219>

SPDB 2,5/ 1 GNYE - Plug

3040740

<https://www.phoenixcontact.com/us/products/3040740>



Plug, nom. voltage: 500 V, nominal current: 24 A, number of positions: 1, connection method: Spring-cage connection, Rated cross section: 2.5 mm², cross section: 0.08 mm²- 4 mm², color: green-yellow

SZF 1-0,6X3,5 - Screwdriver

1204517

<https://www.phoenixcontact.com/us/products/1204517>



Actuation tool, for ST terminal blocks, also suitable for use as a bladed screwdriver, size: 0.6 x 3.5 x 100 mm, 2-component grip, with non-slip grip

Phoenix Contact 2024 © - all rights reserved

<https://www.phoenixcontact.com>

Phoenix Contact USA
586 Fulling Mill Road
Middletown, PA 17057, United States
(+717) 944-1300
info@phoenixcon.com