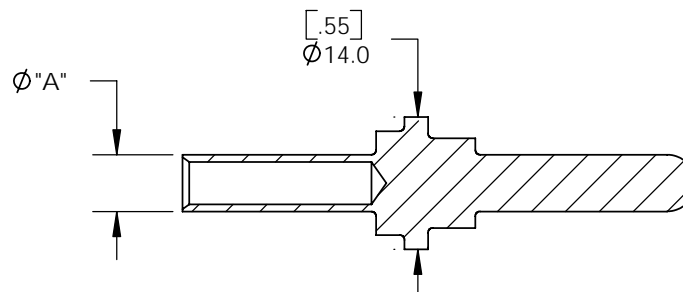
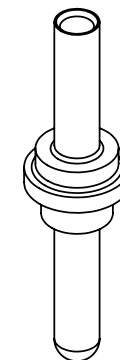
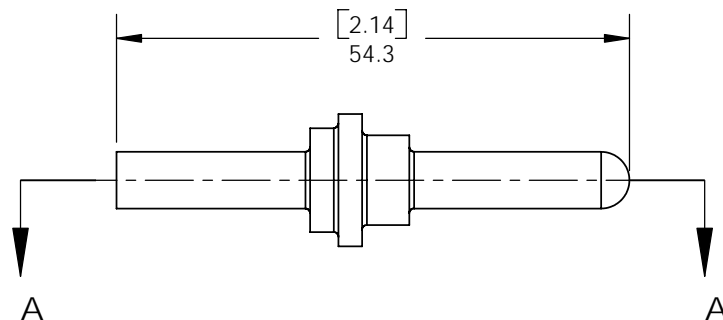
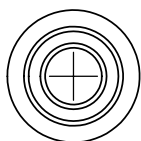


THE INFORMATION CONTAINED IN THIS DRAWING IS THE SOLE PROPERTY OF ANDERSON POWER PRODUCTS. ANY REPRODUCTION IN PART OR WHOLE WITHOUT THE WRITTEN PERMISSION OF ANDERSON POWER PRODUCTS IS PROHIBITED.

Copyright 2005

ANDERSON POWER PRODUCTS RESERVES THE RIGHT TO ALTER PRODUCT TYPES, THEIR TECHNICAL DATA, DIMENSION, STYLE AND ACCESSORIES WITHOUT PRIOR NOTIFICATION.



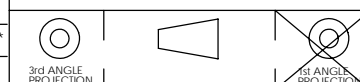
SECTION A-A

CAT. NO.	DESCRIPTION	"A"
80-1010	80A PIN (10MM WIRE)	6.0[.24]
80-1016	80A PIN (16MM WIRE)	8.4[.33]
80-1025	80A PIN (25MM WIRE)	11.0[.43]
80-1035	80A PIN (35MM WIRE)	12.5[.49]

DIMENSIONS ARE IN:	<input checked="" type="checkbox"/> INCH[MM]	MM[INCH]
UNLESS OTHERWISE STATED		
TOLERANCES:		
DECIMALS (INCH)	DECIMALS (MM)	ANGLES
XX ± .02	X ± .5	± 2°
SURFACE FINISH:		
MACHINED	128 [3.2]	✓
MOLDED	64 [1.6]	✓
MATERIAL: COPPER ALLOY		
FINISH: SILVER PLATE		

APPROVALS	
DRAWN	AMP 5/13/05
CHECKED	DJD 5/17/05
MFG APP	CHB 5/13/05
QC APP	UFN 5/13/05
ENG APP	DAM 5/13/05

ANDERSON POWER PRODUCTS		
TITLE		
EBC DIN CONTACT 80A PIN SALES OUTLINE		
SIZE	DWG NO.	REV.
A/A4	80-1000S1	0
SCALE	CADFILE	SHEET
NONE	02305	1 OF 1



-CAD GENERATED DRAWING-
DO NOT MANUALLY UPDATE
DO NOT SCALE

REV.	DESCRIPTION OF CHANGES	APPROVED	DATE
*	*****	***	*****

Mouser Electronics

Authorized Distributor

Click to View Pricing, Inventory, Delivery & Lifecycle Information:

[Anderson Power Products:](#)

[80-1010](#) [80-1025](#)