

# Customer Information Sheet

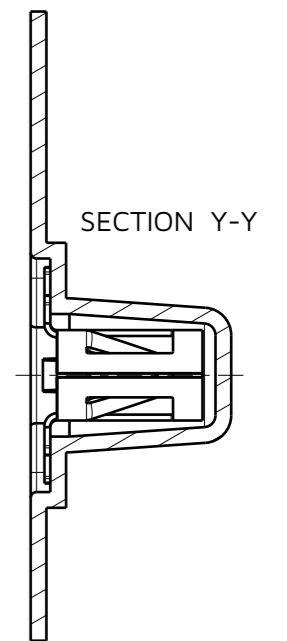
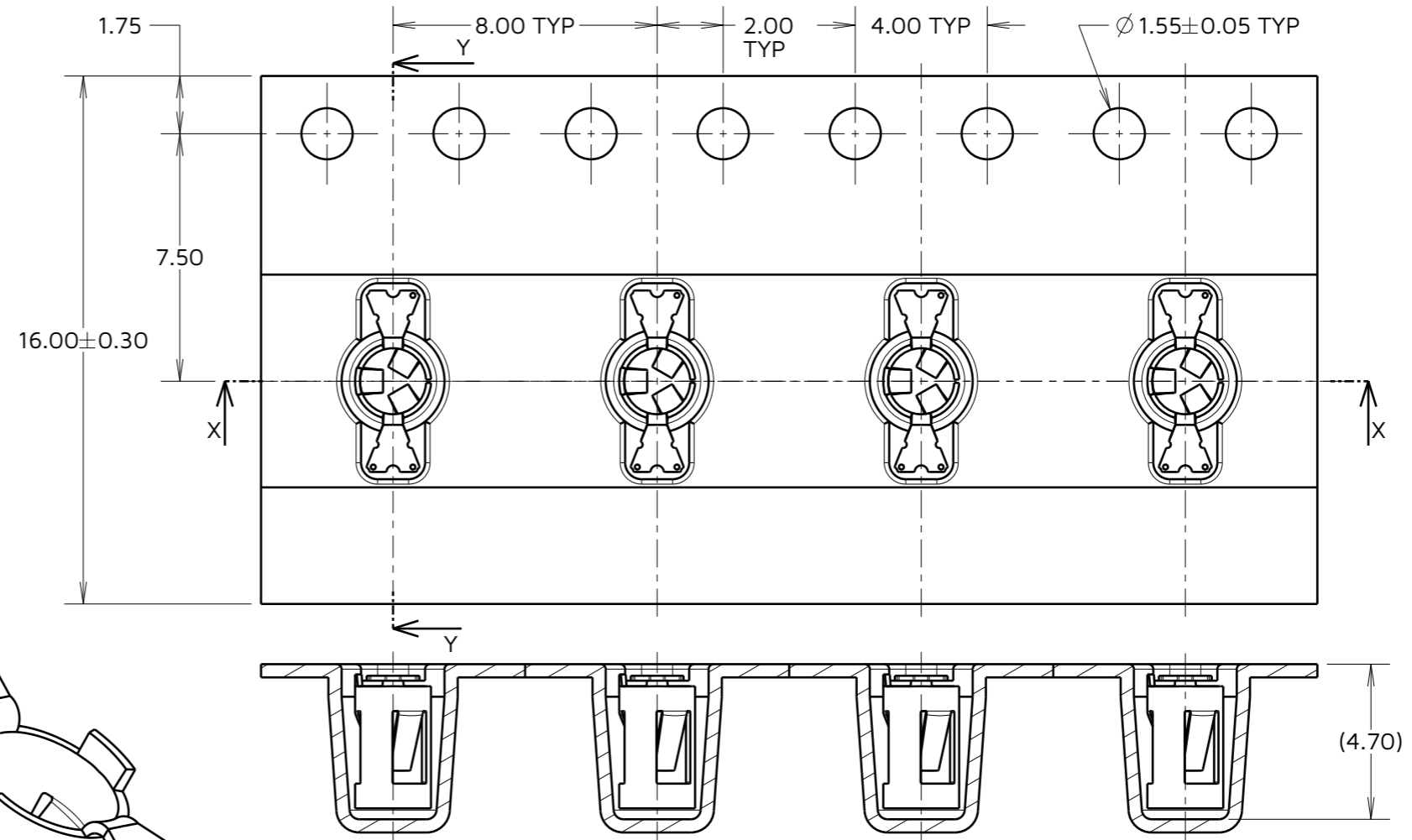
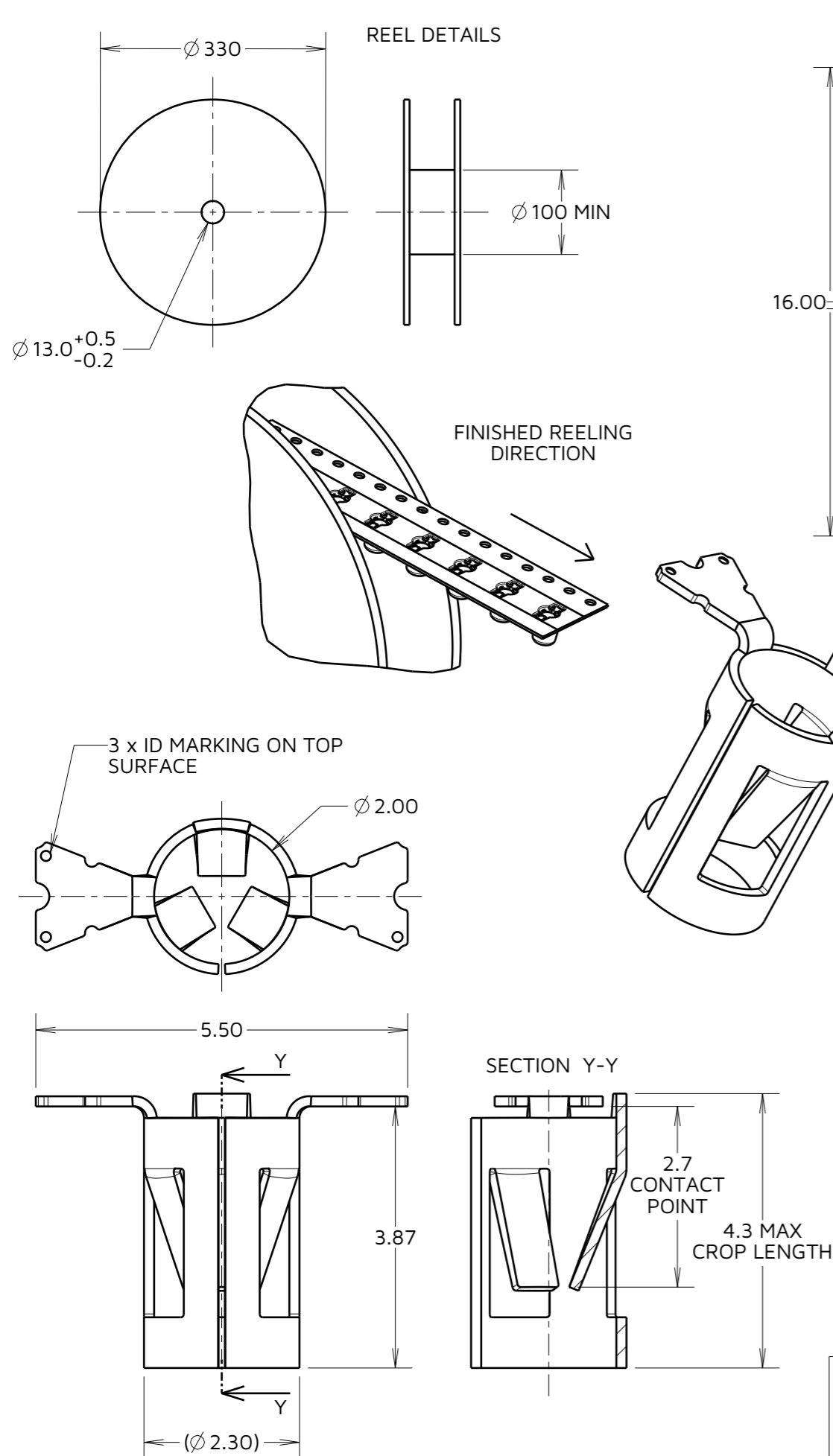
IF IN DOUBT - ASK

©

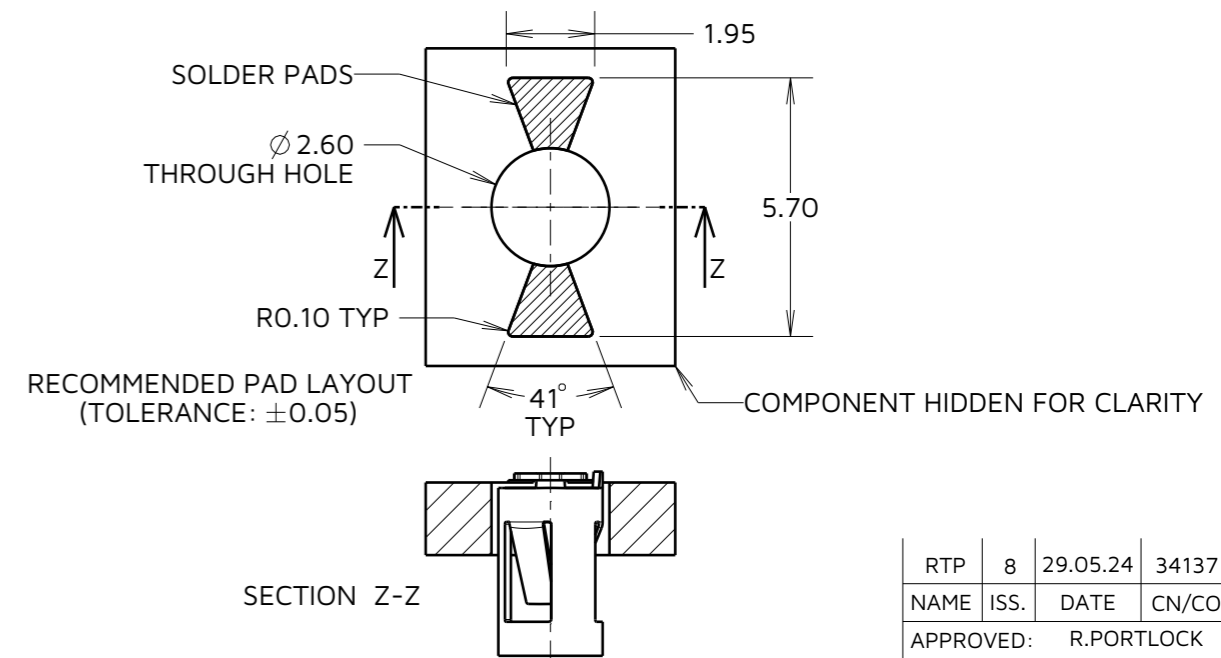
NOT TO SCALE

THIRD ANGLE PROJECTION

ALL DIMENSIONS IN mm



**COMPONENT SPECIFICATION**  
 MATERIAL = BERYLLIUM COPPER  
 FINISH = GOLD OVER NICKEL  
**ELECTRICAL:**  
 CURRENT RATING = 6A  
 CONTACT RESISTANCE = 15mΩ MAX  
**MECHANICAL:**  
 MAX INSERTION FORCE:  
 Ø 0.80mm PIN = 3.0N  
 Ø 1.30mm PIN = 6.0N  
 MIN WITHDRAWAL FORCE:  
 Ø 0.80mm PIN = 0.3N  
 Ø 1.30mm PIN = 0.6N  
 DURABILITY = 500 CYCLES  
**ENVIRONMENTAL:**  
 OPERATING TEMPERATURE = -50°C TO +125°C



**NOTES:**  
 1. QUANTITY OF COMPONENTS PER REEL = 1400.  
 2. THIS PRODUCT IS TAPED AND REELED IN GENERAL ACCORDANCE WITH EIA-481-2 (ELECTRONICS INDUSTRIES ASSOCIATION).

RTP	8	29.05.24	34137
NAME	ISS.	DATE	CN/CO
APPROVED:		R.PORTLOCK	
CHECKED:		F.CHRISPINE	
DRAWN:		S.BENNETT	
ASSEMBLY DRG:			

**HARWIN**

www.harwin.com

**TOLERANCES**  
 X. = ±1mm  
 X.X = ±0.50mm  
 X.XX = ±0.20mm  
 X.XXX = ±0.01mm  
 ANGLES = ±5°  
 UNLESS STATED

THIS DRAWING AND ANY INFORMATION OR DESCRIPTIVE MATTER SET OUT HEREON ARE CONFIDENTIAL AND COPYRIGHT PROPERTY OF THE HARWIN GROUP AND MUST NOT BE DISCLOSED, LOANED, COPIED OR USED FOR MANUFACTURING, TENDERING OR FOR ANY OTHER PURPOSE WITHOUT THEIR WRITTEN PERMISSION.

**MATERIAL:**  
 SEE ABOVE

**TITLE:** SYCAMORE CONTACT  
 Ø 1.00mm TOP ENTRY  
 SOCKET IN TAPE & REEL

**DRAWING NUMBER:**  
 S9131-45R

SHT  
 2 OF 2