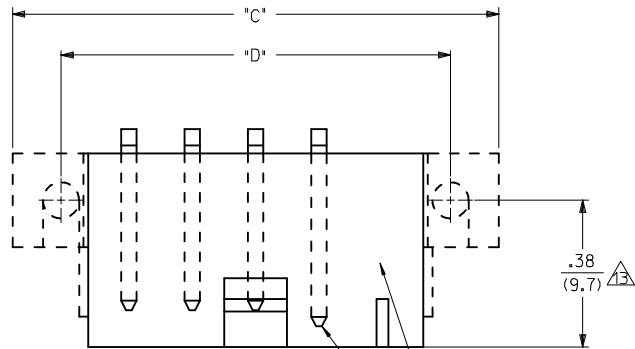
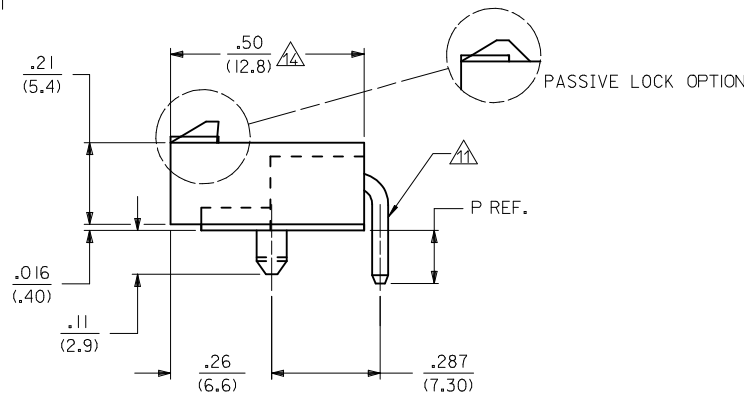
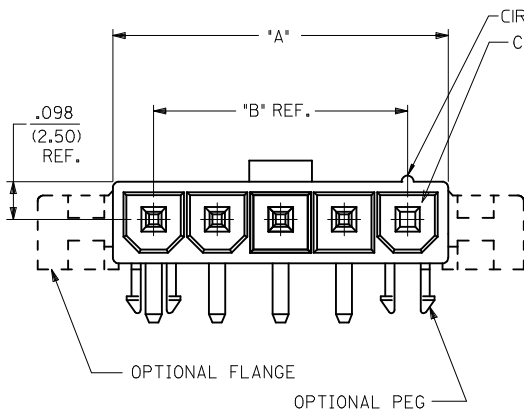


																																																																																																																																																																																																																																																																																																																																																																																																																																																																																																																																																																																																																																																																																																																																																						</
--	--	--	--	--	--	--	--	--	--	--	--	--	--	--	--	--	--	--	--	--	--	--	--	--	--	--	--	--	--	--	--	--	--	--	--	--	--	--	--	--	--	--	--	--	--	--	--	--	--	--	--	--	--	--	--	--	--	--	--	--	--	--	--	--	--	--	--	--	--	--	--	--	--	--	--	--	--	--	--	--	--	--	--	--	--	--	--	--	--	--	--	--	--	--	--	--	--	--	--	--	--	--	--	--	--	--	--	--	--	--	--	--	--	--	--	--	--	--	--	--	--	--	--	--	--	--	--	--	--	--	--	--	--	--	--	--	--	--	--	--	--	--	--	--	--	--	--	--	--	--	--	--	--	--	--	--	--	--	--	--	--	--	--	--	--	--	--	--	--	--	--	--	--	--	--	--	--	--	--	--	--	--	--	--	--	--	--	--	--	--	--	--	--	--	--	--	--	--	--	--	--	--	--	--	--	--	--	--	--	--	--	--	--	--	--	--	--	--	--	--	--	--	--	--	--	--	--	--	--	--	--	--	--	--	--	--	--	--	--	--	--	--	--	--	--	--	--	--	--	--	--	--	--	--	--	--	--	--	--	--	--	--	--	--	--	--	--	--	--	--	--	--	--	--	--	--	--	--	--	--	--	--	--	--	--	--	--	--	--	--	--	--	--	--	--	--	--	--	--	--	--	--	--	--	--	--	--	--	--	--	--	--	--	--	--	--	--	--	--	--	--	--	--	--	--	--	--	--	--	--	--	--	--	--	--	--	--	--	--	--	--	--	--	--	--	--	--	--	--	--	--	--	--	--	--	--	--	--	--	--	--	--	--	--	--	--	--	--	--	--	--	--	--	--	--	--	--	--	--	--	--	--	--	--	--	--	--	--	--	--	--	--	--	--	--	--	--	--	--	--	--	--	--	--	--	--	--	--	--	--	--	--	--	--	--	--	--	--	--	--	--	--	--	--	--	--	--	--	--	--	--	--	--	--	--	--	--	--	--	--	--	--	--	--	--	--	--	--	--	--	--	--	--	--	--	--	--	--	--	--	--	--	--	--	--	--	--	--	--	--	--	--	--	--	--	--	--	--	--	--	--	--	--	--	--	--	--	--	--	--	--	--	--	--	--	--	--	--	--	--	--	--	--	--	--	--	--	--	--	--	--	--	--	--	--	--	--	--	--	--	--	--	--	--	--	--	--	--	--	--	--	--	--	--	--	--	--	--	--	--	--	--	--	--	--	--	--	--	--	--	--	--	--	--	--	--	--	--	--	--	--	--	--	--	--	--	--	--	--	--	--	--	--	--	--	--	--	--	--	--	--	--	--	--	--	--	--	--	--	--	--	--	--	--	--	--	--	--	--	--	--	--	--	--	--	--	--	--	--	--	--	--	--	--	--	--	--	--	--	--	--	--	--	--	--	--	--	--	--	--	--	--	--	--	--	--	--	--	--	--	--	--	--	--	--	--	--	--	--	--	--	--	--	--	--	--	--	--	--	--	--	--	--	--	--	--	--	--	--	--	--	--	--	--	--	--	--	--	--	--	--	--	--	--	--	--	--	--	--	--	--	--	--	--	--	--	--	--	--	--	--	--	--	--	--	--	--	--	--	--	--	--	--	--	--	--	--	--	--	--	--	--	--	--	--	----

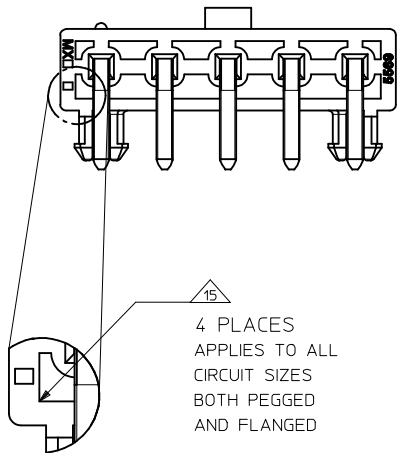


MATE FIRST BREAK LAST OPTION  
SEE CHART FOR LOCATION

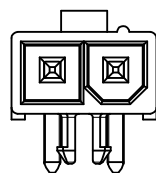
VOIDED CIRCUIT OPTION  
SEE CHART FOR LOCATION



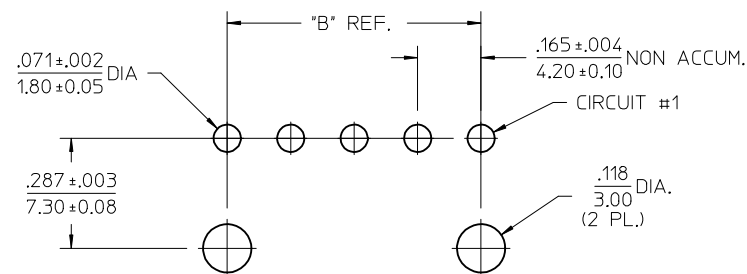
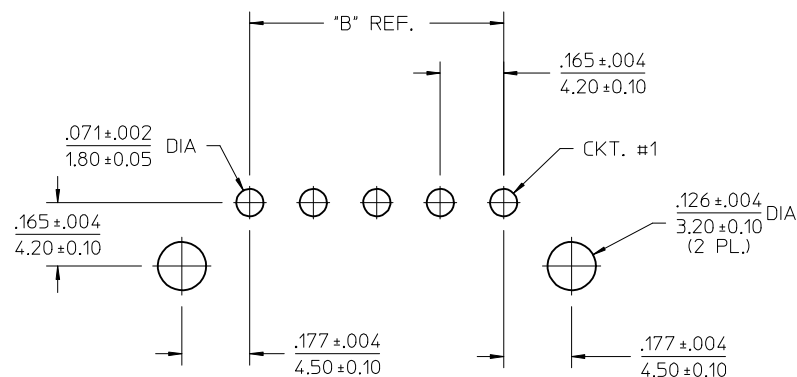
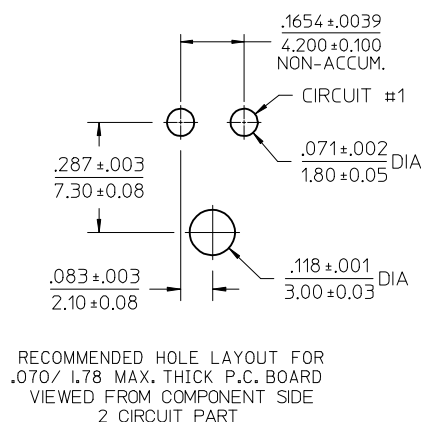
- NOTES:
- MATERIAL:  
HOUSING:  
A - NYLON 6/6, UL 94V-2, LOW HALOGEN, COLOR: NATURAL  
B - NYLON 6/6, UL 94V-0, LOW HALOGEN, COLOR: NATURAL  
D - NYLON 6/6, UL 94V-0, LOW HALOGEN, COLOR: BLACK  
TERMINALS: BRASS
  - FINISH (TERMINAL PLATING):  
A - .000100/(.00254) MIN. MATTE TIN OVER  
.000050/(.00127) MIN. NICKEL OVERALL.  
B - .000030/(0.00076) MIN. SELECT GOLD AND  
.000100/(0.00254) MIN. SELECT MATTE TIN  
OVER .000050/(0.00127) MIN. NICKEL OVERALL
  - PRODUCT SPECIFICATION: PS-5556-001
  - PACKAGING: BULK PACKAGED PER PK-5569-002  
TRAY PACKAGED PER PK-5569-005
  - PART MATES WITH MINI-FIT JR. RECEPTACLE #5557.
  - MOUNTING OPTIONS:  
1 - PEGS  
2 - FLANGES
  - LOCK RAMP STYLES:  
1 - POSITIVE LOCK  
2- PASSIVE LOCK
  - PARTS ARE NOT TO BE MATED OR UNMATED WHILE CIRCUITS ARE LIVE.
  - PART IS NOT DESIGNED FOR CURRENT SHARING.
  - PART CONFORMS TO CLASS "B" REQUIREMENTS OF COSMETIC SPECIFICATION PS-45499-002.
  - FORMING MARKS ARE ACCEPTABLE
  - DISCOLORATION IN THE BANDOLIER CARRIER AREA OF THE PIN IS INHERENT TO THE PLATING PROCESS AND IS DUE TO THE MASKING EFFECT OF THE CARRIER. THIS DISCOLORATION IS IN A NON-FUNCTIONAL AREA OF THE PIN AND WILL NOT AFFECT THE PERFORMANCE OF THE HEADER ASSEMBLY.
  - FOR 3 CKT PART NUMBERS, THIS DIMENSION IS .37/9.35
  - FOR 3 CKT PART NUMBERS, THIS DIMENSION IS .49/12.45
  - CORNER CORE-OUTS ARE OPTIONAL AND MAY OR MAY NOT BE PRESENT
  - TEXT ON PART IS FOR REFERENCE ONLY. TEXT AND TEXT LOCATION MAY VARY DEPENDING ON PART NUMBER AND/OR TOOL.




ADD 2 CKT VIEW EC NO: UCP2017-2789 DRWN:BAPELDORN 2017/06/26 CHKD:JBELL 2017/06/26 APPR:FSMITH 2017/06/28 C13	QUALITY SYMBOLS	DESCRIPTION	GENERAL TOLERANCES (UNLESS SPECIFIED)		DIMENSION STYLE IN/MM		SCALE 4:1	DESIGN UNITS METRIC	THIRD ANGLE PROJECTION				
				mm	INCH	DRAWN BY POLGAR	DATE 1993/02/01	TITLE MINI-FIT JR. SINGLE ROW HEADER WITH MF/BL AND VOIDED CIRCUITS OPTION					
			4 PLACES	± ---	± ---	CHECKED BY FRY	DATE 1993/02/01						
			3 PLACES	± ---	± .015	APPROVED BY FSMITH		DATE 2011/06/21		MOLEX INCORPORATED			
			2 PLACES	± 0.38	± ---								
	1 PLACE	± ---	± ---	ANGULAR ±1/2°		MATERIAL NO.		DOCUMENT NO.		SHEET NO.			
	DRAFT WHERE APPLICABLE MUST REMAIN WITHIN DIMENSIONS				SEE SHEET 3		SDA-43232-*				1 OF 3		
					SIZE C		THIS DRAWING CONTAINS INFORMATION THAT IS PROPRIETARY TO MOLEX INCORPORATED AND SHOULD NOT BE USED WITHOUT WRITTEN PERMISSION						
	REV												



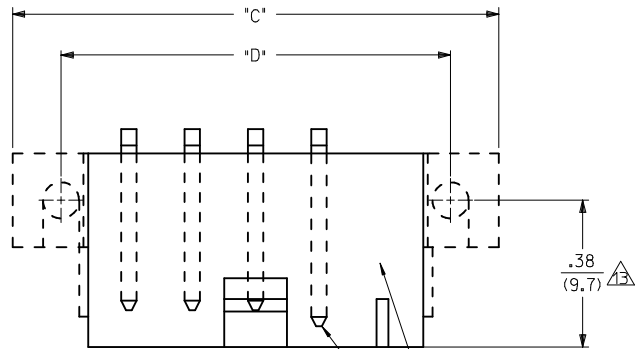
2 CIRCUIT



SEE SHEET 1 EC NO: UCP2017-2789 DRWN:APPELDORN 2017/06/26 CHKD:JBELL 2017/06/26 APPR:FSMITH 2017/06/28 C13	DESCRIPTION REV	QUALITY SYMBOLS <div>▽=0</div> <div>▽=0</div> <div>▽=0</div>	GENERAL TOLERANCES (UNLESS SPECIFIED)		DIMENSION STYLE IN/MM		SCALE 4:1	DESIGN UNITS METRIC	 THIRD ANGLE PROJECTION	
			mm	INCH	DRAWN BY POLGAR	DATE 1993/02/01	TITLE MINI-FIT JR. SINGLE ROW HEADER WITH MF/BL AND VOIDED CIRCUITS OPTION			
			4 PLACES ± ---	± ---	CHECKED BY FRY	DATE 1993/02/01				
			3 PLACES ± ---	± .015	APPROVED BY FSMITH	DATE 2011/06/21				
			2 PLACES ± 0.38	± ---	MATERIAL NO.		DOCUMENT NO.		SHEET NO. 2 OF 3	
			1 PLACE ± ---	± ---	SEE SHEET 3		SDA-43232-*			
			ANGULAR ±1/2°		THIS DRAWING CONTAINS INFORMATION THAT IS PROPRIETARY TO MOLEX INCORPORATED AND SHOULD NOT BE USED WITHOUT WRITTEN PERMISSION					
			DRAFT WHERE APPLICABLE MUST REMAIN WITHIN DIMENSIONS							

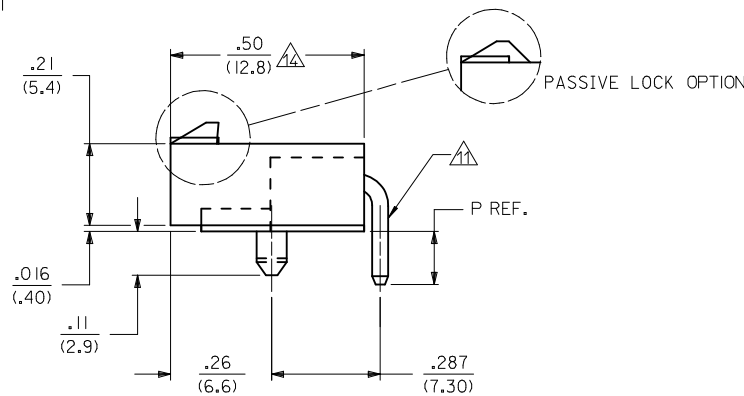
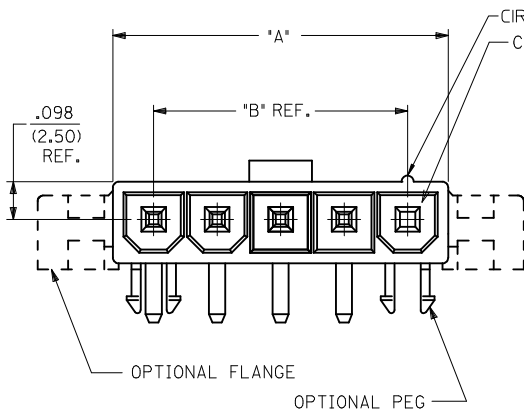
[illegible]

																																																																																																																																																																																																																																																																																																																																																																																																																																																																																																																																																																																																																																																							</
--	--	--	--	--	--	--	--	--	--	--	--	--	--	--	--	--	--	--	--	--	--	--	--	--	--	--	--	--	--	--	--	--	--	--	--	--	--	--	--	--	--	--	--	--	--	--	--	--	--	--	--	--	--	--	--	--	--	--	--	--	--	--	--	--	--	--	--	--	--	--	--	--	--	--	--	--	--	--	--	--	--	--	--	--	--	--	--	--	--	--	--	--	--	--	--	--	--	--	--	--	--	--	--	--	--	--	--	--	--	--	--	--	--	--	--	--	--	--	--	--	--	--	--	--	--	--	--	--	--	--	--	--	--	--	--	--	--	--	--	--	--	--	--	--	--	--	--	--	--	--	--	--	--	--	--	--	--	--	--	--	--	--	--	--	--	--	--	--	--	--	--	--	--	--	--	--	--	--	--	--	--	--	--	--	--	--	--	--	--	--	--	--	--	--	--	--	--	--	--	--	--	--	--	--	--	--	--	--	--	--	--	--	--	--	--	--	--	--	--	--	--	--	--	--	--	--	--	--	--	--	--	--	--	--	--	--	--	--	--	--	--	--	--	--	--	--	--	--	--	--	--	--	--	--	--	--	--	--	--	--	--	--	--	--	--	--	--	--	--	--	--	--	--	--	--	--	--	--	--	--	--	--	--	--	--	--	--	--	--	--	--	--	--	--	--	--	--	--	--	--	--	--	--	--	--	--	--	--	--	--	--	--	--	--	--	--	--	--	--	--	--	--	--	--	--	--	--	--	--	--	--	--	--	--	--	--	--	--	--	--	--	--	--	--	--	--	--	--	--	--	--	--	--	--	--	--	--	--	--	--	--	--	--	--	--	--	--	--	--	--	--	--	--	--	--	--	--	--	--	--	--	--	--	--	--	--	--	--	--	--	--	--	--	--	--	--	--	--	--	--	--	--	--	--	--	--	--	--	--	--	--	--	--	--	--	--	--	--	--	--	--	--	--	--	--	--	--	--	--	--	--	--	--	--	--	--	--	--	--	--	--	--	--	--	--	--	--	--	--	--	--	--	--	--	--	--	--	--	--	--	--	--	--	--	--	--	--	--	--	--	--	--	--	--	--	--	--	--	--	--	--	--	--	--	--	--	--	--	--	--	--	--	--	--	--	--	--	--	--	--	--	--	--	--	--	--	--	--	--	--	--	--	--	--	--	--	--	--	--	--	--	--	--	--	--	--	--	--	--	--	--	--	--	--	--	--	--	--	--	--	--	--	--	--	--	--	--	--	--	--	--	--	--	--	--	--	--	--	--	--	--	--	--	--	--	--	--	--	--	--	--	--	--	--	--	--	--	--	--	--	--	--	--	--	--	--	--	--	--	--	--	--	--	--	--	--	--	--	--	--	--	--	--	--	--	--	--	--	--	--	--	--	--	--	--	--	--	--	--	--	--	--	--	--	--	--	--	--	--	--	----

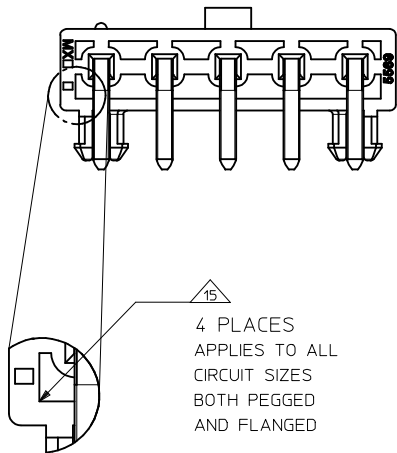


MATE FIRST BREAK LAST OPTION  
SEE CHART FOR LOCATION

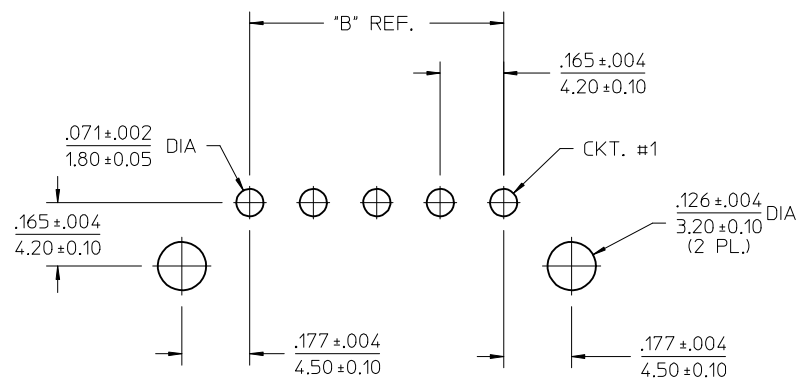
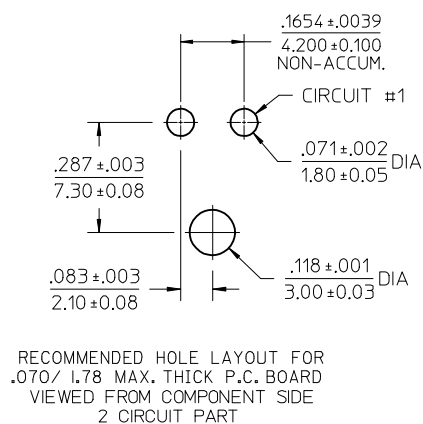
VOIDED CIRCUIT OPTION  
SEE CHART FOR LOCATION



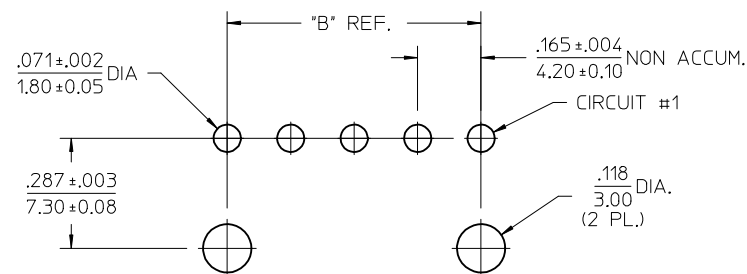
- NOTES:
- MATERIAL:  
HOUSING:  
A - NYLON 6/6, UL 94V-2, LOW HALOGEN, COLOR: NATURAL  
B - NYLON 6/6, UL 94V-0, LOW HALOGEN, COLOR: NATURAL  
D - NYLON 6/6, UL 94V-0, LOW HALOGEN, COLOR: BLACK  
TERMINALS: BRASS
  - FINISH (TERMINAL PLATING):  
A - .000100/(.00254) MIN. MATTE TIN OVER  
.000050/(.00127) MIN. NICKEL OVERALL.  
B - .000030/(0.00076) MIN. SELECT GOLD AND  
.000100/(0.00254) MIN. SELECT MATTE TIN  
OVER .000050/(0.00127) MIN. NICKEL OVERALL
  - PRODUCT SPECIFICATION: PS-5556-001
  - PACKAGING: BULK PACKAGED PER PK-5569-002  
TRAY PACKAGED PER PK-5569-005
  - PART MATES WITH MINI-FIT JR. RECEPTACLE #5557.
  - MOUNTING OPTIONS:  
1 - PEGS  
2 - FLANGES
  - LOCK RAMP STYLES:  
1 - POSITIVE LOCK  
2- PASSIVE LOCK
  - PARTS ARE NOT TO BE MATED OR UNMATED WHILE  
CIRCUITS ARE LIVE.
  - PART IS NOT DESIGNED FOR CURRENT SHARING.
  - PART CONFORMS TO CLASS "B" REQUIREMENTS OF  
COSMETIC SPECIFICATION PS-45499-002.
  - FORMING MARKS ARE ACCEPTABLE
  - DISCOLORATION IN THE BANDOLIER CARRIER AREA OF THE  
PIN IS INHERENT TO THE PLATING PROCESS AND IS DUE TO  
THE MASKING EFFECT OF THE CARRIER. THIS DISCOLORATION  
IS IN A NON-FUNCTIONAL AREA OF THE PIN AND WILL NOT  
AFFECT THE PERFORMANCE OF THE HEADER ASSEMBLY.
  - FOR 3 CKT PART NUMBERS, THIS DIMENSION IS .37/9.35
  - FOR 3 CKT PART NUMBERS, THIS DIMENSION IS .49/12.45
  - CORNER CORE-OUTS ARE OPTIONAL AND MAY OR MAY  
NOT BE PRESENT
  - TEXT ON PART IS FOR REFERENCE ONLY. TEXT AND  
TEXT LOCATION MAY VARY DEPENDING ON PART NUMBER  
AND/OR TOOL.







ADD 2 CKT VIEW EC NO: UCP2017-2789 DRWN:BAPELDORN 2017/06/26 CHKD:JBELL 2017/06/26 APPR:FSMITH 2017/06/28 C13	DESCRIPTION	QUALITY SYMBOLS	GENERAL TOLERANCES (UNLESS SPECIFIED)		DIMENSION STYLE IN/MM		SCALE 4:1	DESIGN UNITS METRIC	THIRD ANGLE PROJECTION	
		 =0  =0  =0  =0		mm	INCH	DRAWN BY POLGAR	DATE 1993/02/01	MINI-FIT JR. SINGLE ROW HEADER WITH MF/BL AND VOIDED CIRCUITS OPTION  MOLEX MOLEX INCORPORATED		
			4 PLACES	± ---	± ---	CHECKED BY FRY	DATE 1993/02/01			
			3 PLACES	± ---	± .015					
			2 PLACES	± 0.38	± ---	APPROVED BY FSMITH	DATE 2011/06/21			
			1 PLACE	± ---	± ---					
			ANGULAR ±1/2°		MATERIAL NO.		DOCUMENT NO.		SHEET NO.	
		DRAFT WHERE APPLICABLE MUST REMAIN WITHIN DIMENSIONS		SEE SHEET 3		SDA-43232-*		1 OF 3		
		SIZE C	THIS DRAWING CONTAINS INFORMATION THAT IS PROPRIETARY TO MOLEX INCORPORATED AND SHOULD NOT BE USED WITHOUT WRITTEN PERMISSION							



RECOMMENDED HOLE LAYOUT FOR  
.070/(1.78) MAX. THICK P.C. BOARD.  
VIEWED FROM COMPONENT SIDE  
(FLANGE MOUNT)



RECOMMENDED HOLE LAYOUT FOR  
.070/(1.78) MAX. THICK P.C. BOARD.  
VIEWED FROM COMPONENT SIDE  
(PEG MOUNT 3-12 CIRCUIT)

SEE SHEET 1	EC NO: UCP2017-2789	2017/06/26	DESCRIPTION	QUALITY SYMBOLS	GENERAL TOLERANCES (UNLESS SPECIFIED)	DIMENSION STYLE		SCALE	DESIGN UNITS	 THIRD ANGLE PROJECTION																							
	DRWN:BPPEL DORN	2017/06/26				IN/MM	4:1	METRIC																									
	CHKD:JBELL	2017/06/26																															
	APPR:FSM TH	2017/06/28																															
C13				  	<table><tr><td>4 PLACES</td><td>mm</td><td>INCH</td></tr><tr><td>3 PLACES</td><td>±---</td><td>±.015</td></tr><tr><td>2 PLACES</td><td>±0.38</td><td>±---</td></tr><tr><td>1 PLACE</td><td>±---</td><td>±---</td></tr></table>	4 PLACES	mm	INCH	3 PLACES	±---	±.015	2 PLACES	±0.38	±---	1 PLACE	±---	±---	<table><tr><td>DRAWN BY</td><td>DATE</td></tr><tr><td>POLGAR</td><td>1993/02/01</td></tr><tr><td>CHECKED BY</td><td>DATE</td></tr><tr><td>FRY</td><td>1993/02/01</td></tr><tr><td>APPROVED BY</td><td>DATE</td></tr><tr><td>FSMITH</td><td>2011/06/21</td></tr></table>	DRAWN BY	DATE	POLGAR	1993/02/01	CHECKED BY	DATE	FRY	1993/02/01	APPROVED BY	DATE	FSMITH	2011/06/21	TITLE		
4 PLACES	mm	INCH																															
3 PLACES	±---	±.015																															
2 PLACES	±0.38	±---																															
1 PLACE	±---	±---																															
DRAWN BY	DATE																																
POLGAR	1993/02/01																																
CHECKED BY	DATE																																
FRY	1993/02/01																																
APPROVED BY	DATE																																
FSMITH	2011/06/21																																

13		12		11		10		9		8		7		6		5		4		3		2		1	
ITEM NO.	CKT. SIZE	CHARACTERISTIC DESCRIPTION	HOUSING OPTION	PLATING	LETTER INDICATES PIN OPTION AT EACH CKT.,. SEE NOTE 2												DIM P REF	PACKAGING							
					1	2	3	4	5	6	7	8	9	10	11	12									
J	432320001	05	05A1A1	PEG	A	SA	SA	V	SA	SA	-	-	-	-	-	-	-	.138/3.50	BULK						
	432320002	05	05A1A1	PEG	A	MA	SA	SA	SA	SA	-	-	-	-	-	-	-	.138/3.50	BULK						
	432320003	05	05B1A1	PEG	A	MA	SA	SA	SA	SA	-	-	-	-	-	-	-	.138/3.50	BULK						
I	432320004	05	05B1A1	PEG	A	SA	V	SA	V	MA	-	-	-	-	-	-	-	.138/3.50	BULK						
	432320005	05	05A1A1	PEG	A	SA	V	SA	SA	SA	-	-	-	-	-	-	-	.138/3.50	BULK						
	432320006	05	05B1A1	PEG	A	SA	SA	SA	V	MA	-	-	-	-	-	-	-	.138/3.50	BULK						
H	432320007	04	04B1A1	PEG	A	SA	MA	MA	SA	-	-	-	-	-	-	-	-	.138/3.50	BULK						
	432320008	04	04B1A1	PEG	A	MA	SA	SA	MA	-	-	-	-	-	-	-	-	.138/3.50	BULK						
	432320009	03	03B1A1	PEG	A	SA	V	SA	-	-	-	-	-	-	-	-	-	.138/3.50	BULK						
G	432320010	03	03B1B1	PEG	B	SB	V	SB	-	-	-	-	-	-	-	-	-	.138/3.50	BULK						
	432320011	05	05B1B1	PEG	B	SB	SB	V	SB	SB	-	-	-	-	-	-	-	.138/3.50	BULK						
	432320012	05	05A1A1	PEG	A	SA	SA	SA	V	SA	-	-	-	-	-	-	-	.138/3.50	BULK						
F	432320013	03	03B1A1	PEG	A	SA	SA	SA	-	-	-	-	-	-	-	-	-	.31/8.0	TRAY						
	432320014	05	05B1A1	PEG	A	SA	SA	SA	SA	SA	-	-	-	-	-	-	-	.31/8.0	TRAY						
	432320016	05	05A1A1	PEG	A	SA	V	V	V	SA	-	-	-	-	-	-	-	.138/3.50	BULK						
E	432320017	04	04B1A1	PEG	A	SA	V	V	SA	-	-	-	-	-	-	-	-	.138/3.50	BULK						
	432320018	04	04B1B1	PEG	B	SB	V	V	SB	-	-	-	-	-	-	-	-	.138/3.50	BULK						
	432320019	05	05B1A1	PEG	A	SA	V	SA	V	SA	-	-	-	-	-	-	-	.138/3.50	BULK						
D	432320020	03	03D1A1	PEG	A	SA	V	SA	-	-	-	-	-	-	-	-	-	.138/3.50	BULK						
	432320021	05	05B1A1	PEG	A	SA	V	V	SA	V	-	-	-	-	-	-	-	.138/3.50	BULK						
	432320022	03	03B1A1	PEG	A	SA	SA	SA	-	-	-	-	-	-	-	-	-	.18/4.5	BULK						
<div><div><div><div><div>SEE SHEET 1</div><div>EC NO: UCP2017-2789</div><div>DRWN:APPELDORN 2017/06/26</div><div>CHKD:JBELL 2017/06/26</div><div>APPR:FSMITH 2017/06/28</div></div><div>DESCRIPTION</div><div>REV</div></div><div><div>QUALITY SYMBOLS</div><div><div><div>▽=0</div></div><div><div>▽=0</div></div><div><div>▽=0</div></div></div></div></div><div><div>GENERAL TOLERANCES (UNLESS SPECIFIED)</div><div><div><div>mm</div><div>INCH</div></div><div>4 PLACES ± --- ± ---</div><div>3 PLACES ± --- ± .015</div><div>2 PLACES ± 0.38 ± ---</div><div>1 PLACE ± --- ± ---</div><div>0 PLACE ± ±</div></div><div>ANGULAR ±1/2°</div><div>DRAFT WHERE APPLICABLE MUST REMAIN WITHIN DIMENSIONS</div></div><div><div>DIMENSION STYLE</div><div>IN/MM</div><div><div>DRAWN BY</div><div>DATE</div></div><div>POLGAR 1993/02/01</div><div><div>CHECKED BY</div><div>DATE</div></div><div>FRY 1993/02/01</div><div><div>APPROVED BY</div><div>DATE</div></div><div>FSMITH 2011/06/21</div></div><div><div>MATERIAL NO.</div><div>SEE CHART</div></div><div><div>SCALE</div><div>4:1</div></div><div><div>DESIGN UNITS</div><div>METRIC</div></div><div><div>THIRD ANGLE PROJECTION</div></div><div><div>TITLE</div><div>MINI-FIT JR. SINGLE ROW HEADER WITH MF/BL AND VOIDED CIRCUITS OPTION</div></div><div><div>molex</div></div><div><div>DOCUMENT NO.</div><div>SDA-43232-*</div></div><div><div>SHEET NO.</div><div>3 OF 3</div></div><div><div>THIS DRAWING CONTAINS INFORMATION THAT IS PROPRIETARY TO MOLEX INCORPORATED AND SHOULD NOT BE USED WITHOUT WRITTEN PERMISSION</div></div></div>																									
12		11		10		9		8		7		6		5		4		3		2		1			

# Mouser Electronics

Authorized Distributor

Click to View Pricing, Inventory, Delivery & Lifecycle Information:

Molex:

[43232-0022](#) [43232-0021](#)